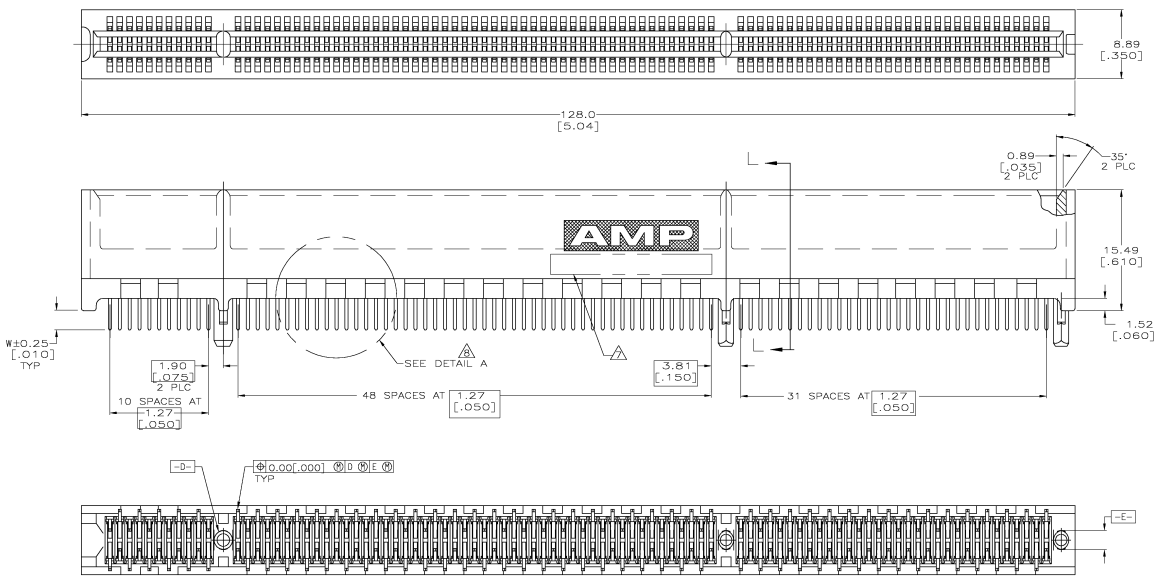
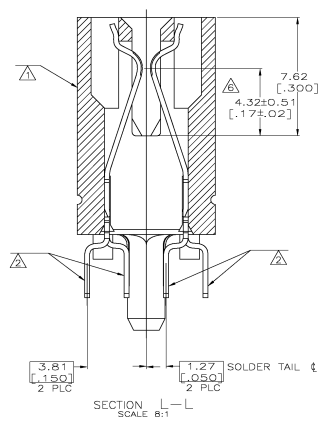


THIS DRAWING IS UNCLASSIFIED  
 UNLESS INDICATED OTHERWISE  
 ALL RIGHTS RESERVED

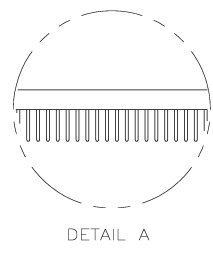
REV	DATE	DESCRIPTION	BY	CHK	APP
00					
C		REVISED PER 8515-0080-05			AWF/AMF



SEE SHEET 2 FOR NOTES



SEE SHEET 2 FOR HOLE PATTERN



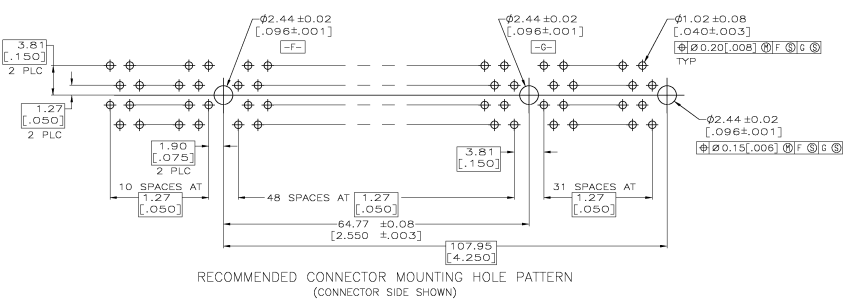
3.56 [0.140]	1-5145165-2
3.17 [0.125]	5145165-8
2.54 [0.100]	5145165-4
2.54 [0.100]	5145165-2
2.54 [0.100]	5145165-1

OBSOLETE

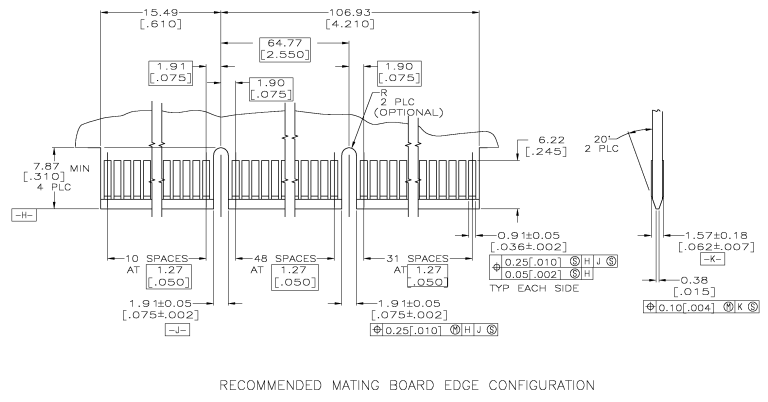
THIS DRAWING IS A CONTROLLED DOCUMENT.		DATE: 04 FEB 88	REV: 04 FEB 88	By: [Signature]	Checked: [Signature]
DRAWING NUMBER: 108-14034		PROJECT SIZE: 108-14034		DATE: 04 FEB 88	
MATERIAL: 114-26012		WEIGHT: ---		SEE: DATE CODE: 114-26012	
FINISH: ---		PART NUMBER: ---		STANDARD EDGE: ---	
CUSTOMER DRAWING		REV: A1	DATE CODE: 00779	PART NO: 5145165	RESTRICTED TO: ---
SCALE: 4:1		SHEET: 1		OF: 2	

THE DRAWING IS UNAPPROVED	REVISIONS FOR MODIFICATION
DATE	BY

REV	DATE	DESCRIPTION	BY	CHK	APP
00					
		SEE SHEET 1			



- ⚠ HOUSING: HIGH TEMPERATURE THERMOPLASTIC. COLOR - NATURAL.
- ⚠ CONTACT: PHOSPHOR BRONZE.
- ⚠ CONTACT FINISH: 0.00127[.000050] MIN NICKEL ALL OVER. GOLD FLASH OVER NICKEL IN CONTACT AREA. 0.00254[.000100] MIN MATTE TIN OVER NICKEL ON SOLDER TAILS.
- ⚠ CONTACT FINISH: 0.00127[.000050] MIN NICKEL ALL OVER. 0.00330[.000150] GOLD OVER NICKEL IN CONTACT AREA. 0.00254[.000100] MIN MATTE TIN OVER NICKEL ON SOLDER TAILS.
- ⚠ CONTACT FINISH: 0.00127[.000050] MIN NICKEL ALL OVER. 0.00076[.000030] GOLD OVER NICKEL IN CONTACT AREA. 0.00254[.000100] MIN MATTE TIN OVER NICKEL ON SOLDER TAILS.
- ⚠ DISTANCE FROM CONTACT POINT TO BOTTOM OF CARD SLOT.
- ⚠ AMP PART NUMBER, DATE CODE AND CSA LOGO MARKED IN APPROXIMATE LOCATION SHOWN.
- ⚠ CORED OR SOLID SIDE WALLS ARE AT DISCRETION OF AMP INCORPORATED.



THIS DRAWING IS A CONTROLLED DOCUMENT.		REV	DATE	DESCRIPTION	BY	CHK	APP

UNITS	SYMBOLS	SCALE	DATE	REV	DESCRIPTION
mm					

DESIGNER	DATE	REV	DESCRIPTION

PROJECT	114-26012
DATE	10B-14034
REV	114-26012

REV	DATE	DESCRIPTION	BY	CHK	APP

REV	DATE	DESCRIPTION	BY	CHK	APP