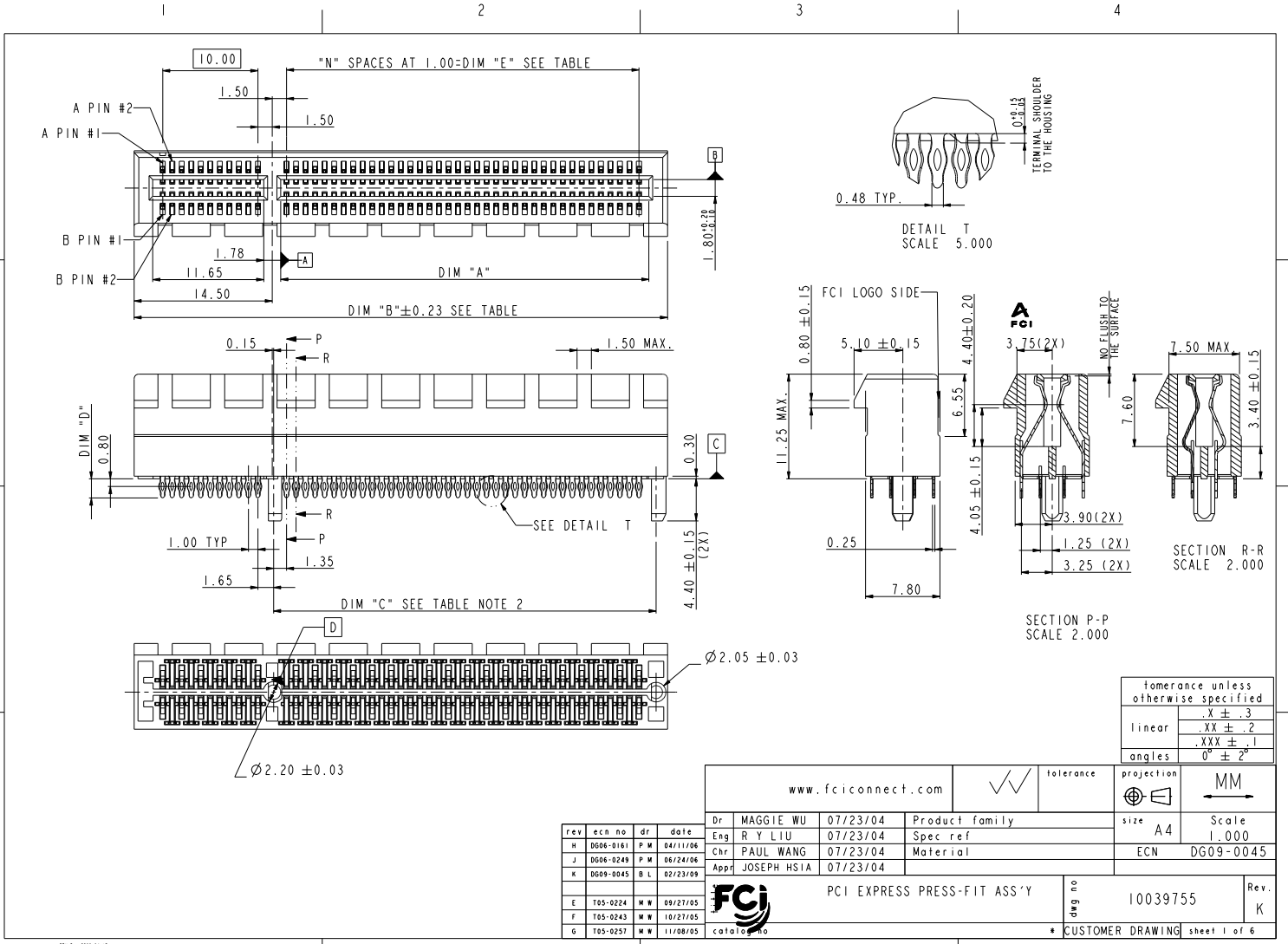




Copyright FCI.



rev	ecn no	dr	date
H	D006-0161	P.M	04/11/04
J	D006-0249	P.M	06/24/04
K	D009-0045	B.L	02/23/09
E	T05-0224	M.W	09/27/05
F	T05-0243	M.W	10/27/05
G	T05-0257	M.W	11/08/05

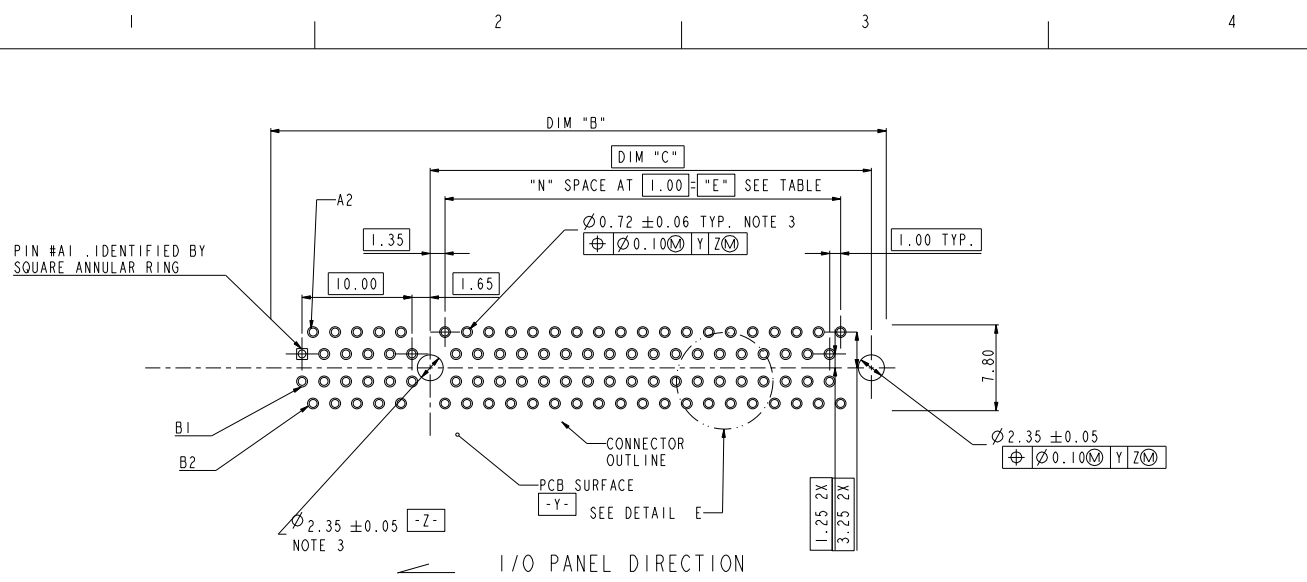
www.fciconnect.com		tolerance	projection	size	Scale
Dr MAGGIE WU 07/23/04		Product family	MM	A4	1.000
Eng R Y LIU 07/23/04		Spec ref			
Chr PAUL WANG 07/23/04		Material			
Appr JOSEPH HSIA 07/23/04				ECN	DG09-0045
FCI		PCI EXPRESS PRESS-FIT ASS'Y	dag no	10039755	Rev. K
catalog no		CUSTOMER DRAWING		sheet 1 of 6	

REV 1 - 2004-04-17

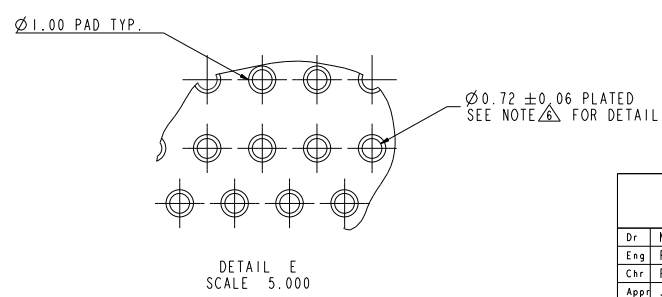
PDM: Rev:K STATUS:Released 4 Printed: Nov 11, 2010



Copyright FCI.



RECOMMENDED FOOTPRINT



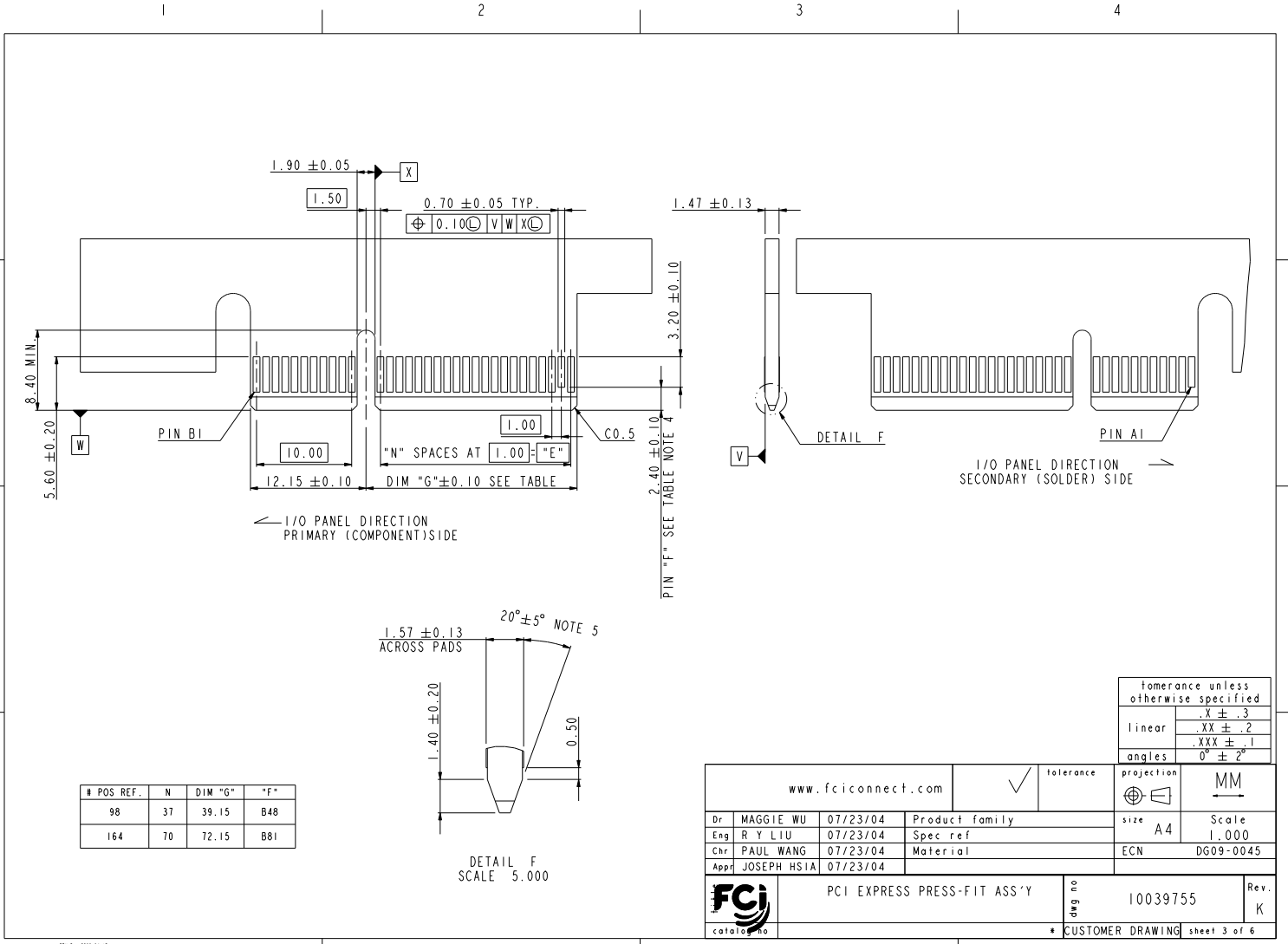
tolerance unless otherwise specified	
linear	.X ± .3
	.XX ± .2
	.XXX ± .1
angles	0° ± 2°

www.fciconnect.com		tolerance	projection	size	Scale
Dr	MAGGIE WU 07/23/04	✓	⊕	A4	1.000
Eng	R Y LIU 07/23/04				
Chr	PAUL WANG 07/23/04			ECN	DG09-0045
Appr	JOSEPH HSIA 07/23/04				
PCI EXPRESS PRESS-FIT ASS'Y		part no	10039755	Rev.	K
catalog no		* CUSTOMER DRAWING		sheet 2 of 6	

REV 1 - 2004-06-17



Copyright FCI.



REV 1 - 2004-06-17

www.fciconnect.com		tolerance	projection	size	Scale
Dr	MAGGIE WU 07/23/04	Product family	MM	A4	1.000
Eng	R Y LIU 07/23/04	Spec ref			
Chr	PAUL WANG 07/23/04	Material	ECN	DG09-0045	
Appr	JOSEPH HSIA 07/23/04				
FCI	PCI EXPRESS PRESS-FIT ASS'Y	Qty no	10039755	Rev.	K
catalog no		* CUSTOMER DRAWING sheet 3 of 6			

PDM: Rev:K STATUS:Released 4 Printed: Nov 11, 2010



Copyright FCI.

1 2 3 4

A

B

C

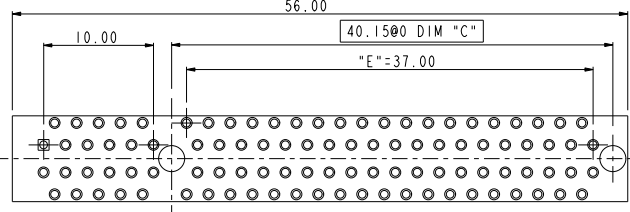
D

A

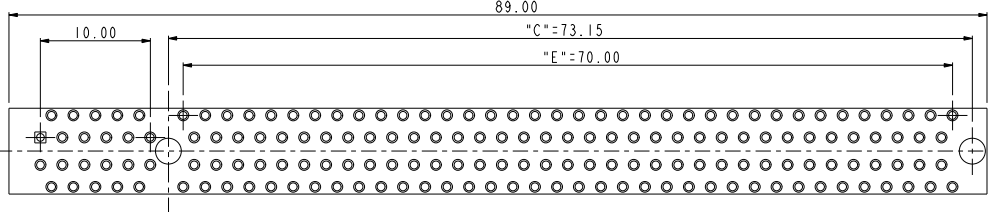
B

C

D



98p  
SCALE 2.000



164P  
SCALE 2.000

### RECOMMENDED FOOTPRINT LAYOUT

www.fciconnect.com		tolerance	projection	MM
Dr	MAGGIE WU 07/23/04	Product family	3G10	size A4
Eng	R Y LIU 07/23/04	Spec ref	*	Scale 1.000
Chr	PAUL WANG 07/23/04	Material	*	ECN DG09-0045
Appr	JOSEPH HSIA 07/23/04			
	PCI EXPRESS PRESS-FIT ASS'Y	dwg no	10039755	Rev. K
catalog no	*	CUSTOMER	sheet 4 of 6	

REV 1 - 2004-06-17

1 2

**PDM: Rev:K** STATUS:Released<sup>4</sup> Printed: Nov 11, 2010

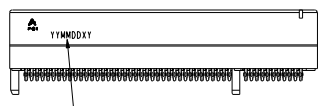


Copyright FCI.

NOTES:

- MATERIAL:  
HOUSING: HIGH TEMPERATURE NYLON, GLASS FILLED UL94V-0 RATED. SUITABLE FOR REFLOW SOLDERING.  
TERMINAL: COPPER ALLOY  
PLATING: 50u" NICKEL UNDERPLATE ALL OVER  
CONTACT AREA PLATING - SEE PRODUCT NUMBER CODE  
SOLDER TAIL: TIN - 100u" MIN. OVER 50u" NICKEL OR TIN/LEAD 100u" MIN. SEE PRODUCT NUMBER CODE
- PRODUCT SPECIFICATION: GS-12-319  
THE HORIZONTAL AXIS FOR THE HOLE PATTERN IS ESTABLISHED BY A LINE THROUGH THE CENTER OF THE TWO Ø2.35 HOLES.  
THE VERTICAL AXIS IS 90° TO THE HORIZONTAL AXIS, THROUGH THE CENTER OF DATUM Z.  
NO TIE BAR PERMITTED FROM CARD EDGE TO LEADING EDGE OF PAD FOR PINS A1 AND PIN NUMBERS "F".  
CHAMFER EDGES MUST BE FREE OF CUTTING BURRS.  
ALL PTH SHOULD BE 0.76-0.83 mm DIA DRILLED AND 0.025-0.05 mm. ELECTRO-DEPOSITED COPPER THK ON THROUGH HOLE WALL.
- RoHS COMPATIBLE PRODUCT SPECIFICATIONS  
a-PLATING:  
- "LF" MEANS THE PRODUCT IS LEAD-FREE, 2um MINIMUM MATTE TIN OVER 1.27um MINIMUM NICKEL UNDERPLATE.  
b-MANUFACTURING PROCESS COMPATIBILITY  
- THE HOUSING WILL WITHSTAND EXPOSURE TO 260°C±5°C SOLDER BATH TEMPERATURE FOR 5 SECONDS IN A REFLOW SOLDER APPLICATION WITH A 1.6mm MIN THICK CIRCUIT BOARD.

CONNECTOR #	POS REF.	N	DIM "A"	DIM "B"	DIM "C"	DIM "E"
1 PORT	36	6	7.65	25.00	9.15	6.00
4 PORT	64	20	21.65	39.00	23.15	20.00
8 PORT	98	37	38.65	56.00	40.15	37.00
16 PORT	164	70	71.65	89.00	73.15	70.00



Date code:  
 "YY" means year number  
 "MM" means month number  
 "DD" means day number  
 "X" means manufacture location  
 "D" means made in Dongguan site  
 "Y" means shift number  
 If date code is 06062601, it means this part is made by shift 1 in 2006/06/26 and manufactured in Dongguan site  
 Date code should be laser mark

PRODUCT NUMBER CODE

10039755 - X X X X X X X X

HOUSING COLOR OPTIONS  
1-BLACK

PEGS OPTIONS  
0-PLASTIC PEGS

- TERMINAL PLATING OPTIONS
- 0-50u" Ni UNDERPLATE  
30u" Au CONTACT AREA  
100u" TIN TAIL AREA -----COMPATIBLE RoHS
  - 1-50u" Ni UNDERPLATE  
15u" Au CONTACT AREA  
100u" TIN TAIL AREA -----COMPATIBLE RoHS
  - 2-50u" Ni UNDERPLATE  
GOLD FLASH CONTACT AREA  
100u" TIN TAIL AREA -----COMPATIBLE RoHS
  - 3-50u" Ni UNDERPLATE  
30u" Au CONTACT AREA  
100u" TIN/LEAD TAIL AREA -----RoHS COMPLIANT EXCEPT Pb
  - 4-50u" Ni UNDERPLATE  
15u" Au CONTACT AREA  
100u" TIN/LEAD TAIL AREA -----RoHS COMPLIANT EXCEPT Pb
  - 5-50u" Ni UNDERPLATE  
GOLD FLASH CONTACT AREA  
100u" TIN/LEAD TAIL AREA -----RoHS COMPLIANT EXCEPT Pb

LEAD FREE OPTION  
"LF" FOR TERMINAL PLATING OPTION 0,1,2  
LEAVE BLANK FOR TERMINAL PLATING 3,4,5

PACKAGING OPTIONS  
T-TRAY PACKAGING

POS OPTIONS  
0-36  
1-64  
2-98  
3-164

	DIM "D"	SUGGESTED PCB THICKNESS
0	2.00±0.20	2.36
1	3.25±0.20	4.19

tolerance unless otherwise specified	
linear	.XX ± .3 .XXX ± .2 .XXX ± .1
angles	0° ± 2°

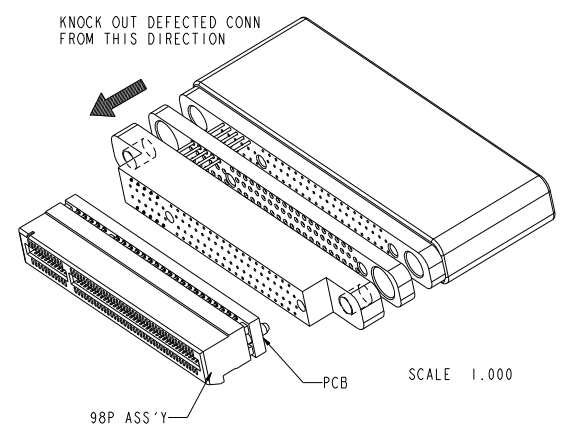
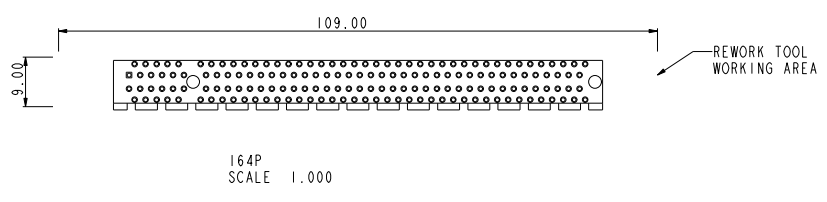
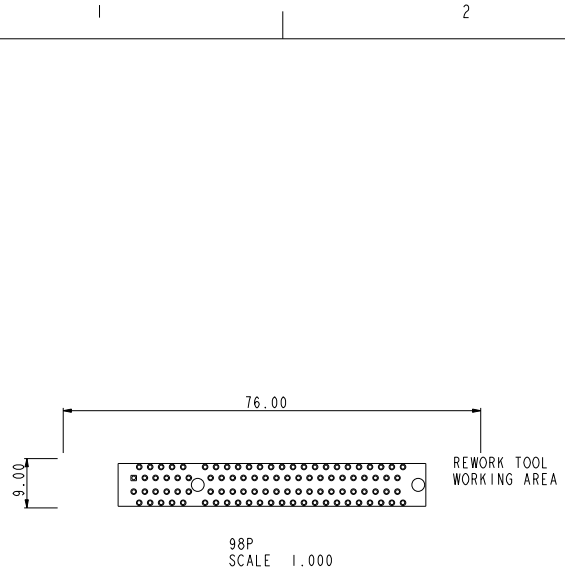
www.fciconnect.com		<input checked="" type="checkbox"/> tolerance	projection	MM
Dr MAGGIE WU	07/23/04	Product family	size A4	Scale 1:000
Eng R Y LIU	07/23/04	Spec ref	ECN	DG09-0045
Chr PAUL WANG	07/23/04	Material		
Appr JOSEPH HSIA	07/23/04			

	PCI EXPRESS PRESS-FIT ASS'Y	Qty no	10039755	Rev. K
catalog no	* CUSTOMER DRAWING		sheet 5 of 6	

REV 1 - 2004-04-17



Copyright FCI.



tolerance unless otherwise specified	
linear	.X ± .3 .XX ± .2 .XXX ± .1
angles	0° ± 2°

www.fciconnect.com		✓ tolerance	projection	MM
Dr	MAGGIE WU 07/23/04	Product family	size	A4
Eng	R Y LIU 07/23/04	Spec ref	Scale	1.000
Chr	PAUL WANG 07/23/04	Material	ECN	DG09-0045
Appr	JOSEPH HSIA 07/23/04			
	PCI EXPRESS PRESS-FIT ASS'Y	qty no	10039755	Rev. K
catalog no		* CUSTOMER DRAWING sheet 6 of 6		

REV 1 - 2004-06-17