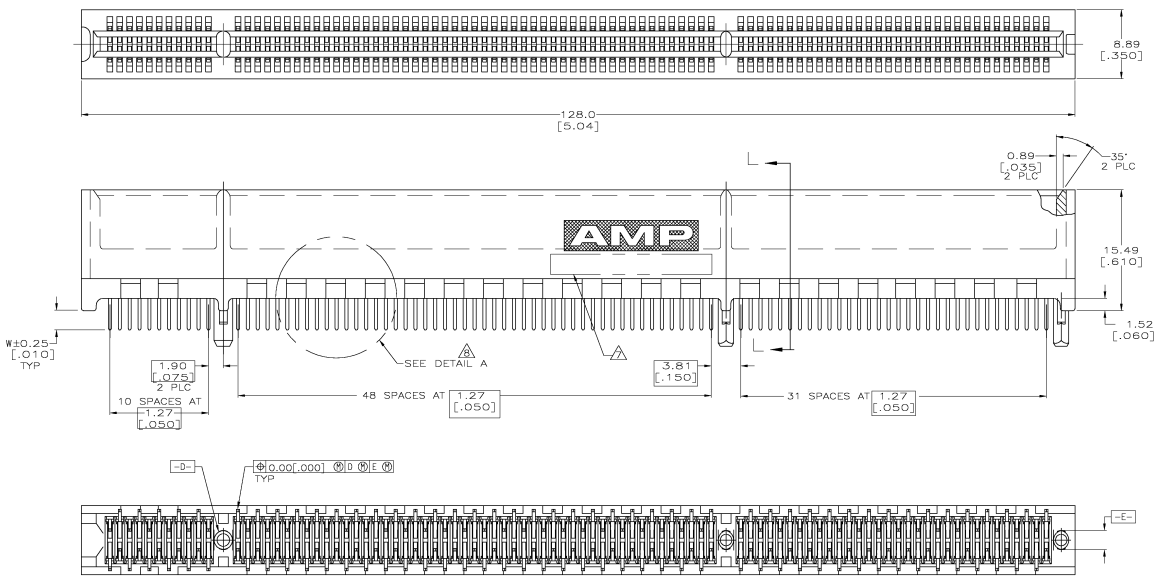
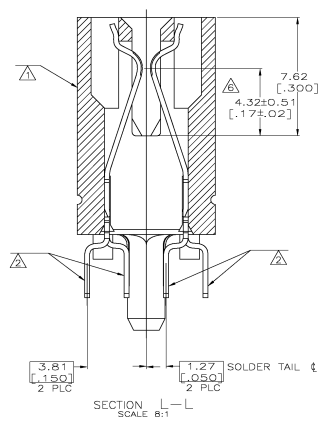


THIS DRAWING IS UNCLASSIFIED
 UNLESS INDICATED OTHERWISE
 ALL RIGHTS RESERVED

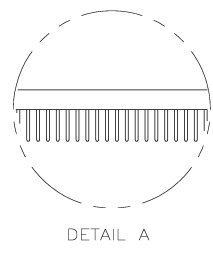
| REV | DATE | DESCRIPTION | BY | CHK | APP |
|-----|------|--------------------------|----|-----|---------|
| 00 | | | | | |
| C | | REVISED PER 8515-0080-05 | | | AWF/AMF |



SEE SHEET 2 FOR NOTES



SEE SHEET 2 FOR HOLE PATTERN



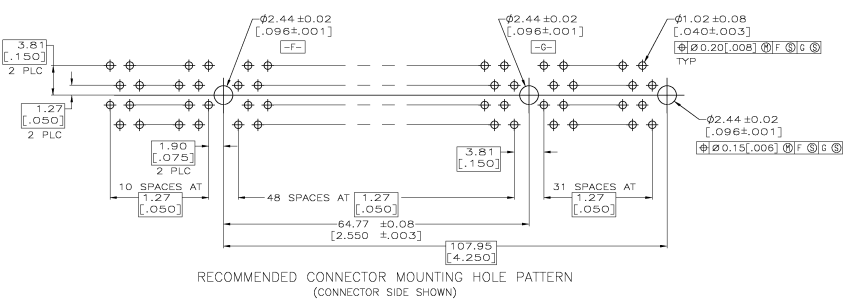
| | |
|--------------|-------------|
| 3.56 [0.140] | 1-5145165-2 |
| 3.17 [0.125] | 5145165-8 |
| 2.54 [0.100] | 5145165-4 |
| 2.54 [0.100] | 5145165-2 |
| 2.54 [0.100] | 5145165-1 |

OBSOLETE

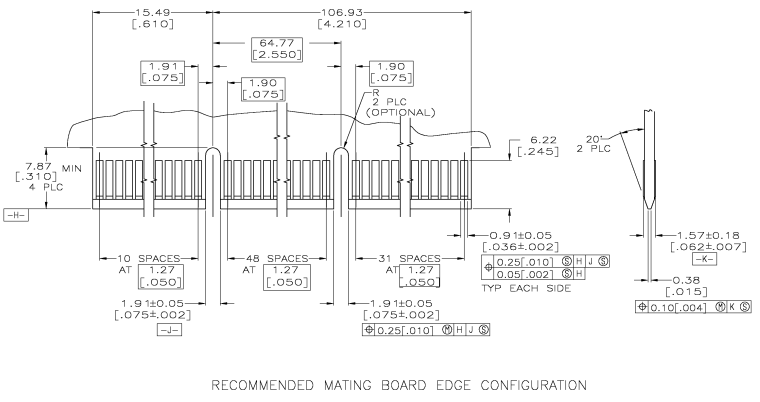
| | | | | | | | | | | | |
|--|-------------------------------------|--------------------|-------------------------|--|-----------------------|---------------------|------------------------|--------------------|--------|----------------|---------------|
| THIS DRAWING IS A CONTROLLED DOCUMENT. | | DATE: 04 FEB 88 | REV: 04 FEB 88 | By: Avnet | Checked: Avnet | Drawn: Avnet | Approved: Avnet | Part No: 5145165-2 | Rev: 1 | Scale: 1" = 2" | Sheet: 1 of 2 |
| UNITS: mm | SYMBOLS: UNLESS OTHERWISE SPECIFIED | PROJECT: 108-14034 | WORKING SIZE: 114-26012 | CONNECTOR ASSEMBLY, 92 DUAL POSITION, 050 SERIES, STANDARD EDGE. | | | | RESTRICTED TO: | | | |
| DATE: 04 FEB 88 | BY: AW | CHK: AW | APP: AW | SEE: 050 | DRAWING NO: A100779 | QTY: 5145165 | RESTRICTED TO: | | | | |
| MATERIAL: AVS | FINISH: W | CUSTOMER DRAWING | | | | | | | | | |

| | |
|--------------------------|--|
| THE DRAWING'S DIMENSIONS | REQUIRE FOR FABRICATION |
| AS SHOWN | AS PER ELECTRICAL CONNECTION AND WIRE NUMBER |

| REV | DATE | DESCRIPTION | BY | CHK | APP |
|-----|------|-------------|----|-----|-----|
| 00 | | SEE SHEET 1 | | | |



- ⚠ HOUSING: HIGH TEMPERATURE THERMOPLASTIC. COLOR - NATURAL.
- ⚠ CONTACT: PHOSPHOR BRONZE.
- ⚠ CONTACT FINISH: 0.00127[.000050] MIN NICKEL ALL OVER. GOLD FLASH OVER NICKEL IN CONTACT AREA. 0.00254[.000100] MIN MATTE TIN OVER NICKEL ON SOLDER TAILS.
- ⚠ CONTACT FINISH: 0.00127[.000050] MIN NICKEL ALL OVER. 0.00330[.000150] GOLD OVER NICKEL IN CONTACT AREA. 0.00254[.000100] MIN MATTE TIN OVER NICKEL ON SOLDER TAILS.
- ⚠ CONTACT FINISH: 0.00127[.000050] MIN NICKEL ALL OVER. 0.00076[.000030] GOLD OVER NICKEL IN CONTACT AREA. 0.00254[.000100] MIN MATTE TIN OVER NICKEL ON SOLDER TAILS.
- ⚠ DISTANCE FROM CONTACT POINT TO BOTTOM OF CARD SLOT.
- ⚠ AMP PART NUMBER, DATE CODE AND CSA LOGO MARKED IN APPROXIMATE LOCATION SHOWN.
- ⚠ CORED OR SOLID SIDE WALLS ARE AT DISCRETION OF AMP INCORPORATED.



| | | | | | | | |
|--|----------|-----------|------|-------------|-------|----------|-----|
| THIS DRAWING IS A CONTROLLED DOCUMENT. | | REV | DATE | DESCRIPTION | BY | CHK | APP |
| UNLESS OTHERWISE SPECIFIED: | | MATERIAL | | CONNECTION | | | |
| UNIT | mm | MATERIAL | | CONNECTION | | | |
| FINISH | AS SHOWN | MATERIAL | | CONNECTION | | | |
| PLATING | AS SHOWN | MATERIAL | | CONNECTION | | | |
| WELDING | AS SHOWN | MATERIAL | | CONNECTION | | | |
| DRILLING | AS SHOWN | MATERIAL | | CONNECTION | | | |
| THREADING | AS SHOWN | MATERIAL | | CONNECTION | | | |
| ANODIZING | AS SHOWN | MATERIAL | | CONNECTION | | | |
| PAINTING | AS SHOWN | MATERIAL | | CONNECTION | | | |
| ETCHING | AS SHOWN | MATERIAL | | CONNECTION | | | |
| POSSIBLE | AS SHOWN | MATERIAL | | CONNECTION | | | |
| CUSTOMER DRAWING | | DATE | REV | BY | CHK | APP | REF |
| CUSTOMER DRAWING | | 114-26012 | 1 | A1 | 00779 | 05145165 | 2 2 |