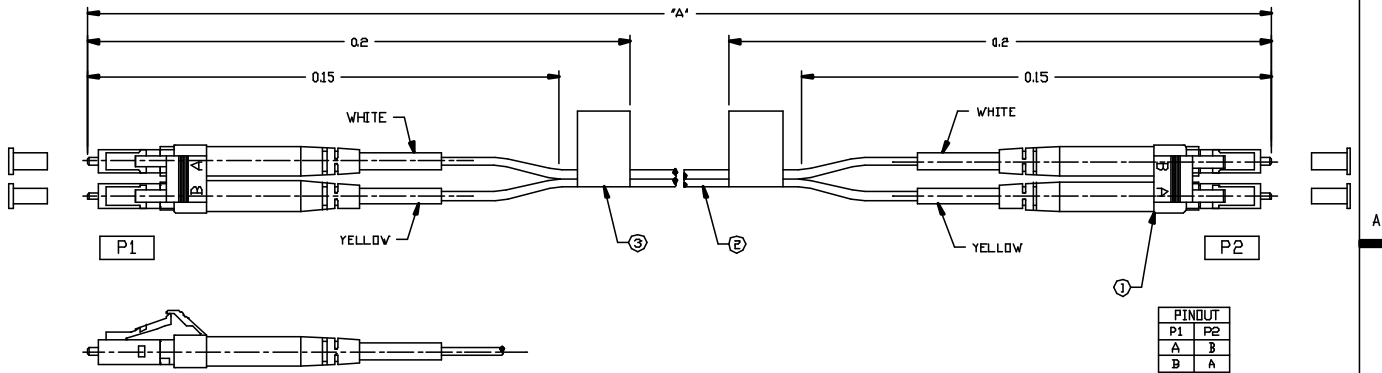


Tous droits strictement réservés. Reproduction ou communication à des tiers sans autorisation écrite de FCI. Toute réimpression sans autorisation écrite de FCI. Toute réimpression sans autorisation écrite de FCI. Toute réimpression sans autorisation écrite de FCI.

All rights strictly reserved. Reproduction or issue to third parties in any form whatsoever is not permitted without written authority from the proprietor. Property of FCI. Copyright FCI.

FCI P/N	"A" (METERS)	TOLERANCE (METERS)	HP P/N	HP REV	HP PROD. CODE	I/L (dB)
53945-M002	2	±0.1	5065-5101	C	C7524A	0.35
53945-M016	16	±0.3	5065-5102	C	C7525A	0.37
53945-M050	50	±0.5	5065-5103	C	C7526A	0.43
53945-M100	100	±2.0	5065-5104	C	C7527A	0.65

COMPONENTS		
ITEM	QTY	DESCRIPTION
1	2	LC DUPLEX CONNECTOR, MM
2	"A"	CABLE, 1.6mm ZIP, 50/125
3	2	LABEL, DURATHERM (SEE FIG 2 FOR LABEL INFO)



SPECIFICATIONS	
INSERTION LOSS	SEE TABLE
RETURN LOSS	20dB MIN
FIBER PROTRUSION	50mm MAX
APEX OFFSET	45um MAX
FIBER UNDERCUT	SEE TELECORDIA GR-926

mat'l. code				tolerances unless otherwise specified		CUSTOMER COPY		Electronics FCI	
ltr	ecn no	dr	date	linear	NOMINALS ONLY	projection	title	product family	code
A	V12351	JJK	11/2/01	linear	UNLESS NOTED	1:1	CA, LC-LC, 1.6mm ZIP, MM-50, TYPE HP	FIBER OPTICS	213
				angles					sheet
				dr	J. KILE	11/8/01			1 of 2
				enqr	S. CLARK	11/8/01			
				chr	S. CLARK	11/8/01			
				appd	S. CLARK	11/8/01			
sheet index	revision sheet	A	A						
		1	2						

NOTES:
SEE PAGE 2.

cage code
22526

ACAD

PDM: Rev:A

STATUS: Released

Printed: Apr 02, 2008

FCI P/N	HP PART NUMBER	HP PRODUCT NUMBER	HP UPC NUMBER	CABLE LENGTH	HP REV
53945-M002	5065-5101	C7524A	0 88698-31004 5	2	C
53945-M016	5065-5102	C7527A	0 88698-31005 2	16	C
53945-M050	5065-5103	C7526A	0 88698-31006 9	50	C
53945-M100	5065-5104	C7527A	0 88698-31007 6	100	C

FIG. 2

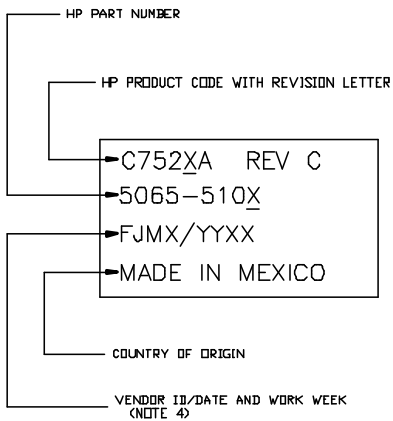
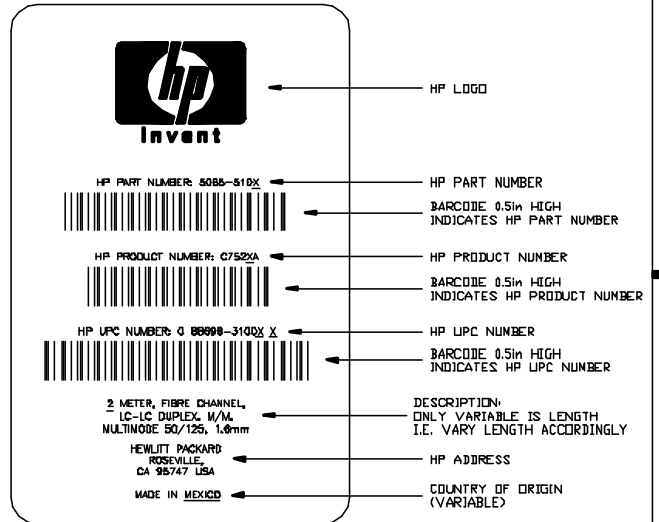


FIG. 1
REFER TO TABLE-A



NOTES:

- UNDERCUT: SEE TELECORDIA GR-326 FOR FIBER UNDERCUT/RADIUS RELATIONSHIP, WHERE R IS THE RADIUS IN mm AND UNDERCUT IS DEFINED AS $U(mm) = (-0.021 \cdot R^3) + (1.3 \cdot R^2) - (3.1 \cdot R) + 325$
- REFERENCE HP DWG C-C7529-90001-10 FOR CLARIFICATION.
- SEE FIG. 2 FOR INFORMATION INCLUDED ON CABLE LABEL.
- VENDOR ID/YEAR AND WORK WEEK:
 F - INDICATES FIRST CAPITAL LETTER OF VENDOR NAME.
 J - INDICATES FIRST CAPITAL LETTER OF CITY OF PRODUCTION.
 MX - INDICATES THE STATE OR COUNTRY OF ORIGIN
 YY - INDICATES THE YEAR (EX 2001 IS "01")
 XX - INDICATES THE WORK WEEK (EX 19 IS THE 19TH WORK WEEK OF THE YEAR)
- FIG. 1 REFERS TO PACKAGING LABEL.
- CSA COMPLIANCE LABELS MUST APPEAR ON THE CABLE ITSELF OR THE PACKAGING.
- DUST CAPS: THE TERMINATED CONNECTORS SHALL BE SHIPPED WITH THE FERRULES PROTECTED BY REMOVABLE PROTECTIVE PLASTIC CAPS.
- LC CONNECTORS TO MEET THE REQUIREMENTS OF TIA/EIA 604-10 (FOCIS 10)
- SC CONNECTORS TO MEET THE REQUIREMENTS OF TIA/EIA 604-3 (FOCIS 3)
- LENGTH IS MEASURED FROM FERRULE TIP TO FERRULE TIP WITHOUT PROTECTIVE CAPS.
- VISUAL: THE CONNECTOR ENDS SHALL BE INSPECTED UNDER AT LEAST 200x MAGNIFICATION AND SHALL BE FREE OF DEFECT, THE FIBER AND FACE SHALL BE MODIFIED BY OTHER CUSTOMER REQUIREMENTS.

mat'l. code				tolerances unless otherwise specified		CUSTOMER COPY		Electronics FCI	
ltr	con no	dr	date	linear	ANGINALS ONLY	projection	title	www.fci.com	
A					UNLESS NOTED	⊕ ↙	CA, LC-LC, 1.6mm ZIP, MM-50, TYPE HP		
				angles		meters	product family	FIBER OPTICS	code
				dr	J. KILE 11/8/01	1:1	size	dwg no	213
				engr	S. CLARK 11/8/01				sheet
				chr	S. CLARK 11/8/01				2 of
				appl	S. CLARK 11/8/01				
sheet index	revision sheet								

ACAD

cage code 22526

Tous droits strictement reserves. Reproduction ou communication a des tiers sans autorisation écrite du propriétaire. Propriete de FCI. droits de reproduction FCI.

All rights strictly reserved. Reproduction or issue to third parties in any form whatsoever is not permitted without written authority from the proprietor. Property of FCI. Copyright FCI.