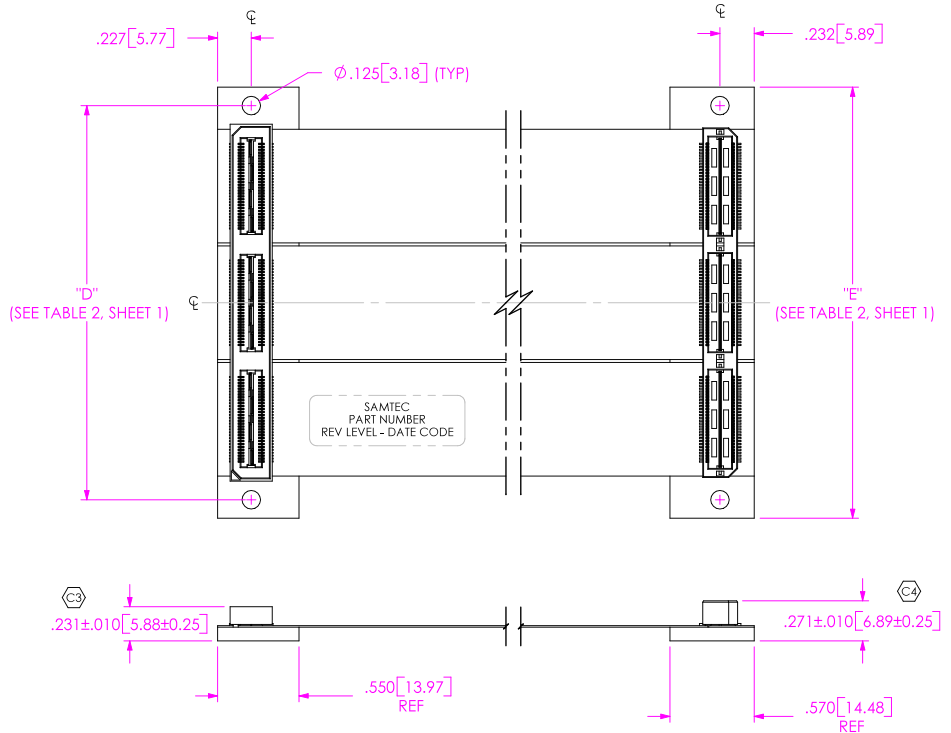


REVISION C

FIG. 2
 -MH OPTION
 (SAME AS FIG. 1, UNLESS OTHERWISE STATED)
 HFHM2-090-T-10.00-SE-MH SHOWN



COVERFILM		.002 [0.05] POLYIMIDE .001 [0.03] ADHESIVE
COPPER CLAD		1/2 oz COPPER .001 [0.03] ADHESIVE .001 [0.03] POLYIMIDE .001 [0.03] ADHESIVE 1/2 oz COPPER
COVERFILM		.001 [0.03] ADHESIVE .002 [0.05] POLYIMIDE
ADHESIVE		.001 [0.03] ADHESIVE
STIFFENER		STANDARD: .062 [1.57] FR4 -MH OPTION: .093 [2.36] FR4

CROSS SECTION OF FLEX & STIFFENER
 NOT TO SCALE

PROPRIETARY NOTE
 THE DOCUMENT CONTAINS INFORMATION CONFIDENTIAL AND PROPRIETARY TO SAMTEC, INC. AND SHALL NOT BE REPRODUCED OR TRANSFERRED TO OTHER DOCUMENTS OR DISCLOSED TO OTHERS OR USED FOR ANY PURPOSE OTHER THAN THAT WHICH IT WAS OBTAINED WITHOUT THE EXPRESSED WRITTEN CONSENT OF SAMTEC, INC.
 DO NOT SCALE DRAWING
 SHEET SCALE: 1:1

SAMTEC

520 PARK EAST BLVD, NEW ALBANY, IN 47150
 * PHONE: 812.944.6733 FAX: 812.948.5047
 e-Mail: INFO@SAMTEC.COM CODE: 55322

DESCRIPTION:
 HIGH SPEED FLEX 0.5mm ASSEMBLY
 DWG. NO.
 HFHM2-XXX-T-XX.XX-SE-XX
 BY: J.CUMMINGS 3/10/2005 SHEET 2 OF 3

F:\DWG\MISC\MKTG\HFHM2-XXX-T-XX.XX-SE-XX-MKT.SLDDRW

REVISION C

FLEX PINOUT

[PARTS]
QSH
QTH

[NETS]
()

GND QSH,3 QSH,4 QSH,7 QSH,8 QSH,11 QSH,12 QSH,15 QSH,16 QSH,19 QSH,20
 QSH,23 QSH,24 QSH,27 QSH,28 QSH,31 QSH,32 QSH,35 QSH,36 QSH,39 QSH,40
 QSH,43 QSH,44 QSH,47 QSH,48 QSH,51 QSH,52 QSH,55 QSH,56 QSH,59 QSH,60
 QTH,3 QTH,4 QTH,7 QTH,8 QTH,11 QTH,12 QTH,15 QTH,16 QTH,19 QTH,20
 QTH,23 QTH,24 QTH,27 QTH,28 QTH,31 QTH,32 QTH,35 QTH,36 QTH,39 QTH,40
 QTH,43 QTH,44 QTH,47 QTH,48 QTH,51 QTH,52 QTH,55 QTH,56 QTH,59 QTH,60
 SIGNALS
 NETC1 QSH,1 QTH,1
 NETC2 QSH,2 QTH,2
 NETC3 QSH,5 QTH,5
 NETC4 QSH,6 QTH,6
 NETC5 QSH,9 QTH,9
 NETC6 QSH,10 QTH,10
 NETC7 QSH,13 QTH,13
 NETC8 QSH,14 QTH,14
 NETC9 QSH,17 QTH,17
 NETC10 QSH,18 QTH,18
 NETC11 QSH,21 QTH,21
 NETC12 QSH,22 QTH,22
 NETC13 QSH,25 QTH,25
 NETC14 QSH,26 QTH,26
 NETC15 QSH,29 QTH,29
 NETC16 QSH,30 QTH,30
 NETC17 QSH,33 QTH,33
 NETC18 QSH,34 QTH,34
 NETC19 QSH,37 QTH,37
 NETC20 QSH,38 QTH,38
 NETC21 QSH,41 QTH,41
 NETC22 QSH,42 QTH,42
 NETC23 QSH,45 QTH,45
 NETC24 QSH,46 QTH,46
 NETC25 QSH,49 QTH,49
 NETC26 QSH,50 QTH,50
 NETC27 QSH,53 QTH,53
 NETC28 QSH,54 QTH,54
 NETC29 QSH,57 QTH,57
 NETC30 QSH,58 QTH,58

-030 OPTION SHOWN, THIS PATTERN REPEATS FOR -060 & -090

PROPRIETARY NOTE

THIS DOCUMENT CONTAINS INFORMATION
CONFIDENTIAL AND PROPRIETARY TO
SAMTEC, INC. AND SHALL NOT BE REPRODUCED
OR TRANSFERRED TO OTHER DOCUMENTS OR
DISCLOSED TO OTHERS OR USED FOR ANY
PURPOSE OTHER THAN THAT WHICH IT WAS
OBTAINED WITHOUT THE EXPRESSED WRITTEN
CONSENT OF SAMTEC, INC.

DO NOT SCALE DRAWING

SHEET SCALE: 1:1

SAMTEC

520 PARK EAST BLVD, NEW ALBANY, IN 47150
PHONE: 812.944.6733 FAX: 812.948.5047
e-Mail: INFO@SAMTEC.COM CODE: 55322

DESCRIPTION: HIGH SPEED FLEX 0.5mm ASSEMBLY

DWG. NO. HFHM2-XXX-T-XX.XX-SE-XX

BY: J.CUMMINGS 3/10/2005 SHEET 3 OF 3

F:\DWG\MISC\MKTG\HFHM2-XXX-T-XX.XX-SE-XX-MKT.SLDDRW