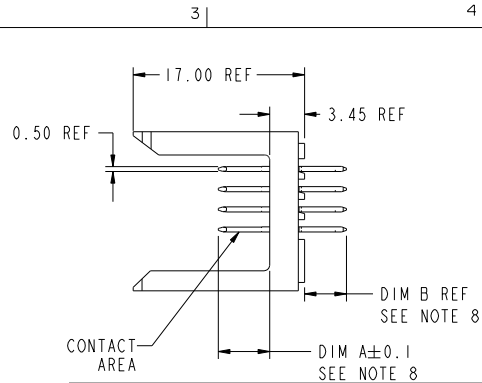
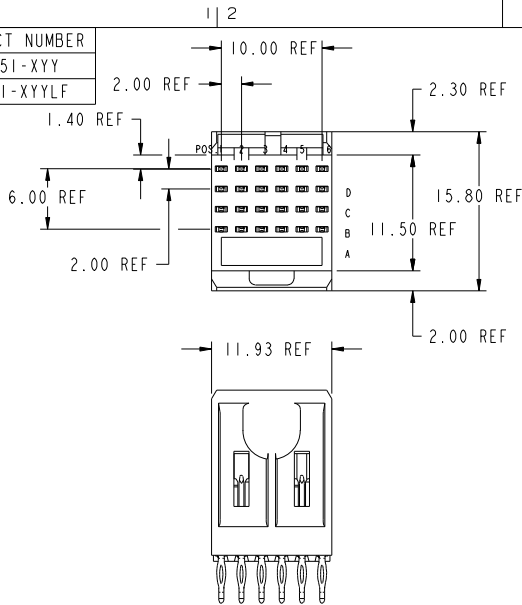


PRODUCT NUMBER
85851-XY
85851-XYLF



PLATING IN CONTACT AREA		
DASH NUMBER	PERFORMANCE LEVEL	NOTES
-AYY	TELCORDIA CO	SEE NOTE 9
-NIYY	TELCORDIA CO (NXT)	-
-NSYY	TELCORDIA UE (NXT)	-
-IYY	TELCORDIA CO	-
-2YY	TELECOM CLASS	-
-3YY	IEC CLASS I	-
-5YY	TELCORDIA UE	-
-9YY	TELCORDIA CO	-
-NIYYLF	TELCORDIA CO (NXT) IEC CLASS I	SEE NOTE 10
-NSYYLF	TELCORDIA UE (NXT)	SEE NOTE 10
-IYYLF	TELCORDIA CO IEC CLASS I	SEE NOTE 10
-2YYLF	TELECOM CLASS	SEE NOTE 10
-5YYLF	TELCORDIA UE	SEE NOTE 10



This document is the property of, and embodies
CONFIDENTIAL and PROPRIETARY information of FCI.
No part of the information shown on this
document may be used in any way or
reproduced in any form without the
written consent of FCI.
Copyright FCI.

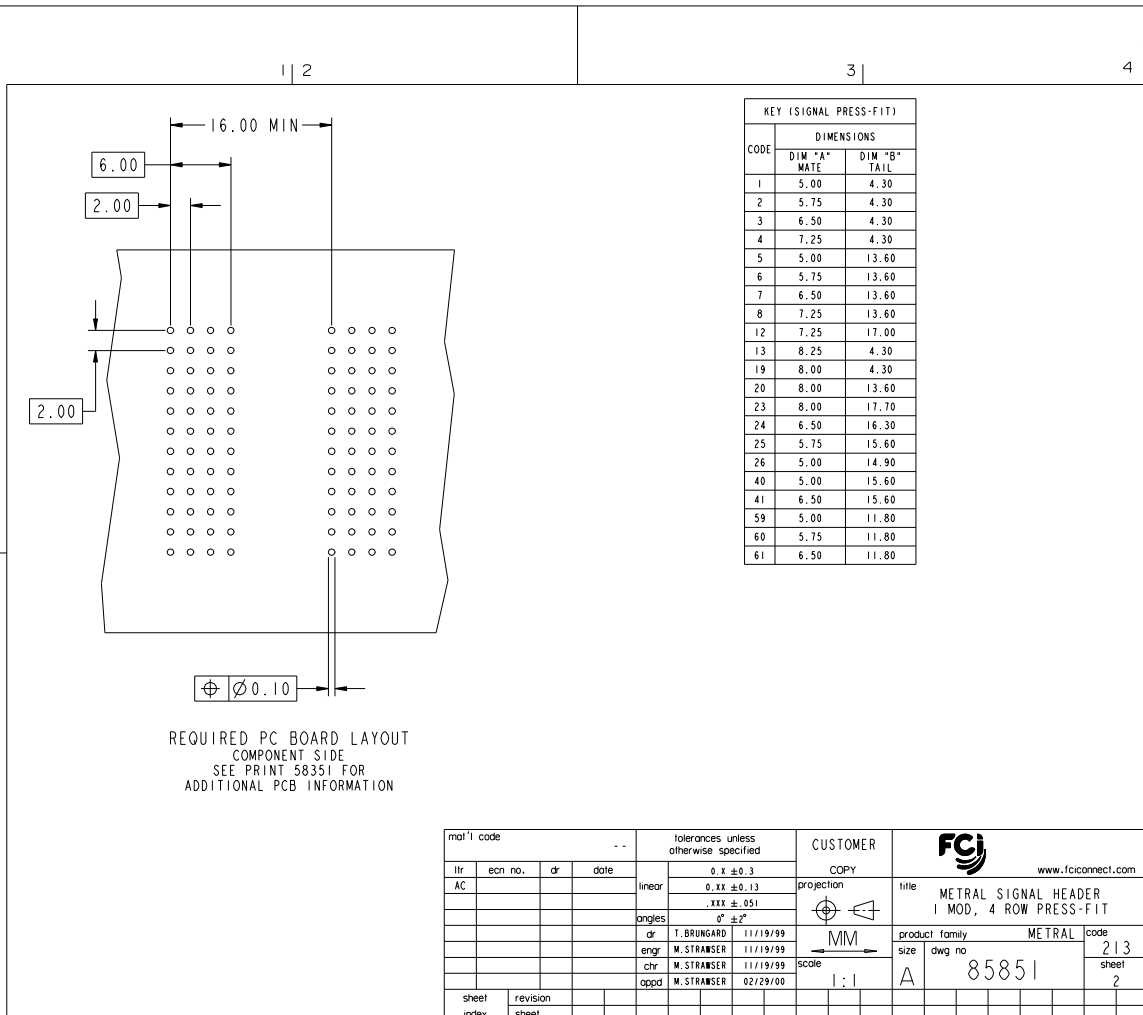
mat'l code		SEE NOTES		tolerances unless otherwise specified		CUSTOMER	
lfr	ecn no.	dr	date	linear	0.X ± 0.3	projection	COPY
AA	V06-0569	DCH	2006-06-13		0.XX ± 0.13		www.fciconnect.com
AB	V07-0206	DCH	2007-03-06		.XXX ± .051		
AC	D610-0165	TER	2010-05-05	angles	0° ± 2°		
				dr	I.BRINGARD	11/19/99	
W	V04-1216	HTB	12/23/04	eng	M.STRAMSER	11/19/99	title
X	V05-0099	HTB	01/27/05	chr	M.STRAMSER	11/19/99	METRAL SIGNAL HEADER
Y	V05-0367	DAI	05/25/05	opnd	M.STRAMSER	02/29/00	I MOD, 4 ROW PRESS-FIT
sheet	revision	AC	AC	AC	AC	AC	product family
index	sheet	1	2	3	4		size
							dwg no
							85851
							code
							213
							sheet
							1 of 4

scale	2:1	projection	MM
customer	Pr/E	code	22526



This document is the property of, and embodies CONFIDENTIAL and PROPRIETARY information of FCJ. No part of the information shown on this document may be used in any way or disclosed to others without the written consent of FCJ. Copyright FCJ.

REV: 2008-04-08



REQUIRED PC BOARD LAYOUT
COMPONENT SIDE
SEE PRINT 58351 FOR
ADDITIONAL PCB INFORMATION

mat'l code		--		tolerances unless otherwise specified		CUSTOMER		FCJ		www.fcjconnect.com	
litr	ecm no.	dr	date	linear	0.X ±0.3	projection	COPY		title		
AC					0.XX ±0.13		METRAL		METRAL SIGNAL HEADER		
				angles	.XX ±.051		I MOD, 4 ROW PRESS-FIT				
				dr	0° ±2°		MM		product family		
				eng	I.BRINGARD 11/19/99		A		METRAL		
				chr	M.STRAMSER 11/19/99		scale		code		
				appd	M.STRAMSER 02/29/00		1:1		213		
sheet index		revision sheet						size		dwg no	
								85851		sheet	
								A		2	

Pro/E

cage code 22526

PDM: Rev:AC

STATUS:Released

Printed: May 11, 2010



This document is the property of, and embodies CONFIDENTIAL and PROPRIETARY information of FCJ. No part of the information shown on this document may be used in any way or be disclosed to others without the written consent of FCJ. Copyright FCJ.

METRAL P/N	CONTACT CODE MOD. I	METRAL P/N	CONTACT CODE MOD. I	METRAL P/N	CONTACT CODE MOD. I	METRAL P/N	CONTACT CODE MOD. I	METRAL P/N	CONTACT CODE MOD. I	METRAL P/N	CONTACT CODE MOD. I	METRAL P/N	CONTACT CODE MOD. I																																								
ROW	1 2 3 4 5 6	ROW	1 2 3 4 5 6	ROW	1 2 3 4 5 6	ROW	1 2 3 4 5 6	ROW	1 2 3 4 5 6	ROW	1 2 3 4 5 6	ROW	1 2 3 4 5 6																																								
85851-X01 SEE NOTE 11 LEAD FREE OPTION	D 12 25 23 23 23 25 C 12 25 23 23 23 25 B 12 25 23 23 23 25 A 12 25 23 23 23 25	85851-X07 SEE NOTE 11 LEAD FREE OPTION	D 59 59 59 59 59 59 C 60 60 60 60 60 60 B 60 60 60 60 60 60 A 61 61 61 61 61 61	85851-X13 SEE NOTE 11 LEAD FREE OPTION	D 26 23 25 23 12 12 C 23 23 25 23 12 12 B 24 23 25 23 12 12 A 23 23 25 23 12 12	85851-X18 SEE NOTE 11 LEAD FREE OPTION	D 19 2 2 2 2 2 2 C 19 2 2 2 2 2 2 B 19 2 2 2 2 2 2 A 19 2 2 2 2 2 2	85851-X23 SEE NOTE 11 LEAD FREE OPTION	D 8 8 6 7 7 6 C 8 8 6 7 7 6 B 8 8 6 7 7 6 A 8 8 6 7 7 6	85851-X02 SEE NOTE 11 LEAD FREE OPTION	D 26 12 12 12 12 23 C 23 12 12 12 12 23 B 24 12 12 12 12 23 A 24 12 12 12 12 23	85851-X08 SEE NOTE 11 LEAD FREE OPTION	D 4 4 4 4 4 4 C 2 2 2 2 2 2 B 2 2 2 2 2 2 A 2 2 2 2 2 2	85851-X14 SEE NOTE 11 LEAD FREE OPTION	D 2 2 2 3 4 3 C 2 2 2 3 4 3 B 2 2 2 3 4 3 A 2 2 2 3 4 3	85851-X19 SEE NOTE 11 LEAD FREE OPTION	D 1 1 1 1 1 1 C 1 1 1 1 1 1 B 3 1 1 1 1 3 A 1 1 1 1 1 1	85851-X24 SEE NOTE 11 LEAD FREE OPTION	D 4 4 4 2 2 2 C 2 2 2 2 2 2 B 2 2 2 2 2 2 A 4 4 4 2 2 2	85851-X03 SEE NOTE 11 LEAD FREE OPTION	D 1 1 1 1 1 1 C 2 2 2 2 2 2 B 2 2 2 2 2 2 A 2 2 2 2 2 2	85851-X09 SEE NOTE 11 LEAD FREE OPTION	D 40 40 40 40 41 41 C 40 40 40 40 40 40 B 40 40 40 40 40 40 A 40 40 40 40 40 40	85851-X15 SEE NOTE 11 LEAD FREE OPTION	D 1 1 1 1 1 1 C 1 1 1 1 1 1 B 1 1 1 1 1 3 A 1 1 1 1 1 1	85851-X20 SEE NOTE 11 LEAD FREE OPTION	D 4 3 4 2 2 2 C 4 3 4 2 2 2 B 4 3 4 2 2 2 A 4 3 4 2 2 2	85851-X25 SEE NOTE 11 LEAD FREE OPTION	D 2 2 2 2 2 2 C 2 2 2 2 2 2 B 2 2 2 2 2 2 A 2 2 2 2 2 2	85851-X04 SEE NOTE 11 LEAD FREE OPTION	D 19 19 19 - - - C 19 19 19 - - - B 19 19 19 - - 19 A 19 19 19 - - 19	85851-X10 SEE NOTE 11 LEAD FREE OPTION	D 6 1 6 1 6 1 6 1 C 20 20 6 1 6 1 6 1 B 6 1 6 1 6 1 6 1 A 6 1 6 1 6 1 6 1	85851-X16 SEE NOTE 11 LEAD FREE OPTION	D 6 6 6 6 6 6 C 6 6 6 6 6 6 B 6 6 6 6 6 6 A 6 6 6 6 6 6	85851-X21 SEE NOTE 11 LEAD FREE OPTION	D 3 3 3 3 3 3 C 3 3 3 3 3 3 B 3 3 3 3 3 3 A 1 3 3 3 3 3	85851-X26 SEE NOTE 11 LEAD FREE OPTION	D 3 3 4 4 2 19 C 3 3 4 4 2 19 B 3 3 4 4 2 19 A 3 3 4 4 2 19	85851-X05 SEE NOTE 11 LEAD FREE OPTION	D 4 1 4 1 1 1 1 C 4 1 1 1 1 1 1 B 4 1 1 1 1 1 1 A 4 1 4 1 1 1 1	85851-X11 SEE NOTE 11 LEAD FREE OPTION	D 6 1 6 1 6 1 6 1 C 6 1 6 1 6 1 6 1 B 6 1 6 1 6 1 6 1 A 6 1 6 1 6 1 20 20	85851-X17 SEE NOTE 11 LEAD FREE OPTION	D 20 6 6 6 6 6 C 20 6 6 6 6 6 B 20 6 6 6 6 6 A 20 6 6 6 6 6	85851-X22 SEE NOTE 11 LEAD FREE OPTION	D 4 4 2 3 3 2 C 4 4 2 3 3 2 B 4 4 2 3 3 2 A 4 4 2 3 3 2	85851-X27 SEE NOTE 11 LEAD FREE OPTION	D 7 7 6 8 8 20 C 7 7 6 8 8 20 B 7 7 6 8 8 20 A 7 7 6 8 8 20	85851-X06 SEE NOTE 11 LEAD FREE OPTION	D 59 59 59 59 59 59 C 60 60 60 60 60 60 B 60 60 60 60 60 60 A 60 60 60 60 60 60	85851-X12 SEE NOTE 11 LEAD FREE OPTION	D 6 1 6 1 6 1 6 1 20 20 C 6 1 6 1 6 1 6 1 6 1 B 6 1 6 1 6 1 6 1 6 1 A 6 1 6 1 6 1 6 1 6 1

mat'l code		tolerances unless otherwise specified		CUSTOMER		FCJ		www.fcjconnect.com	
itr	ecm no.	dr	date	linear	0.X ±0.3 0.XX ±0.13 .XXX ±.051 ° ±2°	projection	title	METRAL SIGNAL HEADER I MOD, 4 ROW PRESS-FIT	
				angles			product family	METRAL	code 213
				dr	I.BRINGARD 11/19/99	MM	size	dwg no	85851
				eng	M.STRANSER 11/19/99	scale			sheet 3
				chr	M.STRANSER 11/19/99				
				appd	M.STRANSER 02/29/00				
sheet index	revision sheet								

REV: 200-11-10

1 | 2 | Pro/E | 3 | code code 22526 | 4



This document is the property of, and embodies CONFIDENTIAL and PROPRIETARY information of FCI. No part of the information shown on this document may be issued in any way or be reproduced in any form without the written consent of FCI. Copyright FCI.

METRAL P/N	ROW	CONTACT CODE MOD. I					
		1	2	3	4	5	6
85851-X28 SEE NOTE 11 LEAD FREE OPTION	D	1	1	20	5	5	5
	C	1	1	20	5	5	5
	B	1	1	20	5	5	5
	A	1	1	20	5	5	5
85851-X29 SEE NOTE 11 LEAD FREE OPTION	D	3	3	4	4	3	3
	C	3	3	3	3	1	3
	B	3	3	3	3	3	3
	A	13	13	13	13	13	13
85851-X30 SEE NOTE 11 LEAD FREE OPTION	D	1	1	3	1	1	1
	C	1	1	3	1	1	1
	B	1	1	1	1	1	3
	A	1	1	1	1	1	3
85851-X31 SEE NOTE 11 LEAD FREE OPTION	D	2	2	19	2	19	2
	C	2	2	19	2	19	2
	B	2	1	19	2	19	2
	A	2	2	19	2	19	2

1 | 2

3 |

4

NOTES:

- FOR DIM A AND B SEE SHEET 2 AND UP.
- BODY MATERIAL: LIQUID CRYSTAL POLYMER 30 % GLASS. FLAME RETARDANT ACC. UL 94-V0.
- PIN MATERIAL: PHOSPHOR BRONZE.
- PLATING ON PRESS-FIT TAIL:
85851 -XXX IS SnPb
85851 -XXYLF IS Sn (LEAD FREE)
PLATING ON CONTACT AREA CONFORMS TO PERFORMANCE LEVEL SHOWN IN TABLE.
- PRODUCT MARKING:
PART NUMBER DESIGNATION & BATCH I.D.
- ALL PRODUCTS WITH PART NUMBERS SHOWN IN SUBSEQUENT TABLES WILL BE PACKAGED IN TUBES. IF TRAY PACKAGING IS REQUIRED, A SUFFIX "P" WILL BE ADDED TO THE END OF THE PART NUMBER. EXAMPLE: XXXX-XXXP OR XXXX-XXXLP
- PRODUCT SPECIFICATION GS-12-180 APPLICATION SPECIFICATION BUS-20-073
- AFTER INSERTION INTO CIRCUIT BOARD WITH QUALIFIED TOOL.
- A PLATING HAS Au FLASH IN PRESS FIT AREA (LEAD FREE).
- THE PRODUCTS WHERE THE PART NUMBER ENDS IN LF MEET THE EUROPEAN UNION DIRECTIVES AND OTHER COUNTRY REGULATIONS AS DESCRIBED IN GS-22-008.
- FOR LEAD FREE PART NUMBERS, ADD AN "LF" SUFFIX. EXAMPLE: 85851-X01LF
- ALL PRODUCTS EXCEPT THOSE WITH PART NUMBERS CONTAINING (DRAWING NO.)-N1--- OR (DRAWING NO.)-N5--- WILL WITHSTAND EXPOSURE TO 260°C FOR 60 SECONDS IN A CONVECTION, INFRA-RED OR VAPOR PHASE REFLOW OVEN. PART NUMBERS (DRAWING NO.)-N1--- AND (DRAWINGS NO.)-N5--- WILL NOT WITHSTAND REFLOW AND Au CONTACT SURFACE OF THE CONTACTS SHALL BE EXPOSED TO A MAXIMUM 140°C FOR NO LONGER THAN 15 SECONDS IN A WAVE SOLDER APPLICATION.

mat'l code				tolerances unless otherwise specified		CUSTOMER	
ltr	ecn no.	dr	date	linear	angles	projection	COPY
AC				0.X ±0.3	0.XX ±0.13		www.fciconnect.com
				XXX ±.051	±.2		
				dr	I.BRINGARD 11/19/99		title METRAL SIGNAL HEADER I MOD, 4 ROW PRESS-FIT product family METRAL size code 213 scale 1:1 A
				eng	M.STRAMSER 11/19/99		
				chr	M.STRAMSER 11/19/99		
				appd	M.STRAMSER 02/29/00		
sheet index	revision sheet						

1 | 2

3 |

4

Pro/E

cage code 22526