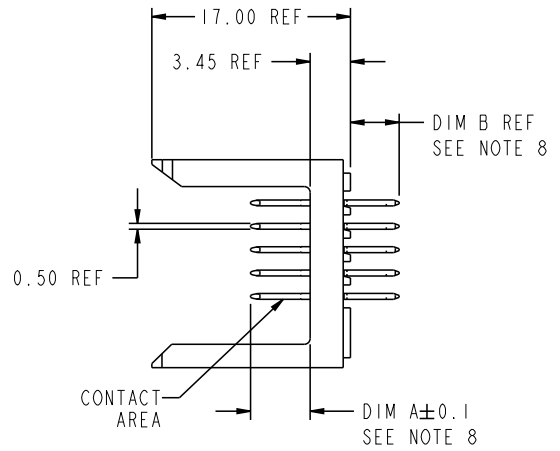
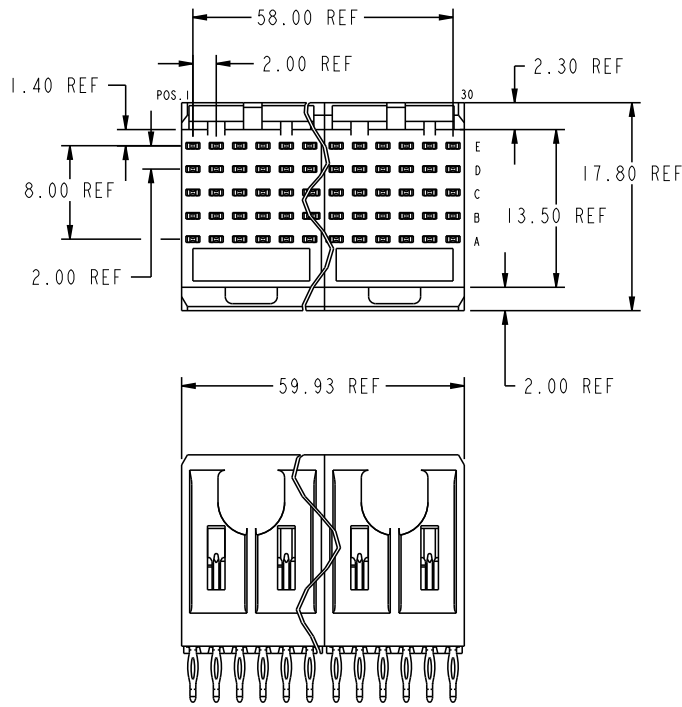


PRODUCT NUMBER  
73933-XXXX  
73933-XXXXLF



mat'l code				SEE NOTES				tolerances unless otherwise specified				CUSTOMER								
ltr	ecm no.	dr	date	linear	0.X ±0.3	projection	COPY				FCJ www.fciconnect.com									
W	V06-0544	DCH	2006-06-07	0.XX ±0.13			title				METRAL SIGNAL HEADER									
X	V07-0270	HTB	2007-04-03	.XXX ±.051			5 MOD, 5 ROW PRESS-FIT													
Y	V07-0282	HTB	2007-04-11	angles	0° ±2°		product family				METRAL									
AA	DG07-0354	CLU	2007-08-31	dr	T.BRUNGARD	11/19/99	size				213									
AB	DG09-0256	TER	2009-08-19	engr	M.STRANSER	11/19/99	dwg no				1 of 8									
-	-	-	-	chr	M.STRANSER	11/19/99	scale				73933									
V	V06-0222	LP	3/7/06	oppd	M.STRANSER	02/29/00	2:1													
sheet index	revision sheet	AB	AB	AB	AB	AB	AB	AB	AB	AB	AB	AB	AB	AB	AB	AB	code code	22526		4



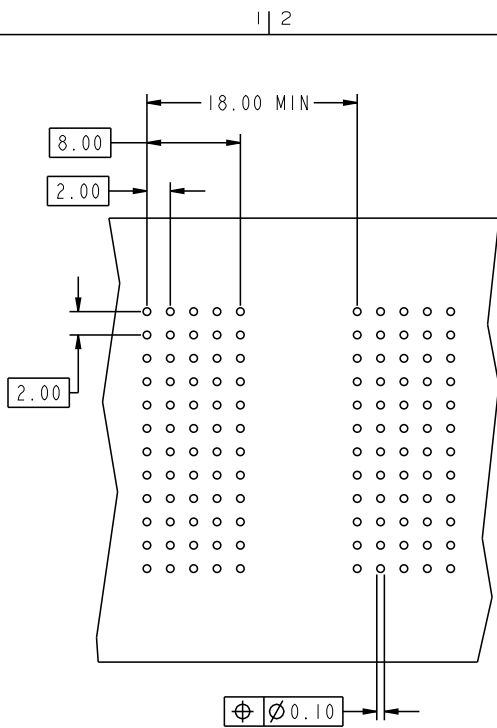
This document is the property of and embodies CONFIDENTIAL and PROPRIETARY information of FCJ. No part of the information shown on this document may be used in any way or disclosed to others without the written consent of FCJ. Copyright FCJ.

REV E - 2006-04-18

PDM: Rev:AB STATUS:Released Printed: Sep 16, 2009



This document is the property of and embodies  
 CONFIDENTIAL and PROPRIETARY information of FCJ.  
 No part of the information shown on this  
 document may be used in any way or disclosed  
 to others without the written consent of FCJ.  
 Copyright FCJ.



KEY		
CODE	DIMENSIONS	
	DIM "A" MATE	DIM "B" TAIL
1	5.00	4.30
2	5.75	4.30
3	6.50	4.30
4	7.25	4.30
9	5.00	17.00
10	5.75	17.00
11	6.50	17.00
12	7.25	17.00
19	8.00	4.30
25	5.75	15.60
40	5.00	15.60
41	6.50	15.60
42	7.25	15.60
59	5.00	11.80
60	5.75	11.80
61	6.50	11.80
62	7.25	11.80

REQUIRED PC BOARD LAYOUT  
 COMPONENT SIDE  
 SEE PRINT 58351 FOR  
 ADDITIONAL PCB INFORMATION

mat'l code		--		tolerances unless otherwise specified		CUSTOMER		www.fcjconnect.com	
ltr	ecm no.	dr	date	linear	0.X ±0.3	projection	COPY		
AB					0.XX ±0.13		title METRAL SIGNAL HEADER		
				angles	.XXX ±.051	$\varnothing$	5 MOD, 5 ROW PRESS-FIT		
				dr	° ±2°	MM	product family	METRAL	code
				engr	T.BRUNGARD 11/19/99	scale	size	dwg no	213
				chr	M.STRAWER 11/19/99	1:1	A	73933	sheet
				oppd	M.STRAWER 02/29/00				2
sheet index	revision sheet								
							code code	22526	4

Pro/E

PDM: Rev:AB

STATUS: Released

Printed: Sep 16, 2009











This document is the property of and embodies CONFIDENTIAL and PROPRIETARY information of FCI. No part of the information shown on this document may be used in any way or disclosed to others without the written consent of FCI. Copyright FCI.

METRAL P/N	ROW	CONTACT MOD. 1					MOD. 2					MOD. 3					MOD. 4					MOD. 5									
		1	2	3	4	5	6	7	8	9	10	11	12	13	14	15	16	17	18	19	20	21	22	23	24	25	26	27	28	29	30
73933-X033	E	2	2	2	2	2	2	2	2	2	2	2	2	2	2	2	2	2	2	2	2	2	2	2	2	2	2	2	2	2	2
	D	2	2	2	2	2	2	2	2	2	2	2	2	2	2	2	2	2	2	2	2	2	2	2	2	2	2	2	2	2	2
	C	2	2	2	2	2	2	2	2	2	2	2	2	2	2	2	2	2	2	2	2	2	2	2	2	2	2	2	2	2	2
73933-X034LF	B	2	2	2	2	2	2	2	2	2	2	2	2	2	2	2	2	2	2	2	2	2	2	2	2	2	2	2	2	2	2
	A	2	2	2	2	2	2	2	2	2	2	2	2	2	2	2	2	2	2	2	2	2	2	2	2	2	2	2	2	2	2

A

B

mat'l code				tolerances unless otherwise specified		CUSTOMER		 www.fciconnect.com	
lfr	ecn no.	dr	date	linear	0.X ±0.3	COPY			
AB				angles	0.XX ±0.13			title METRAL SIGNAL HEADER 5 MOD, 5 ROW PRESS-FIT	
				dr	.XXX ±.051	product family METRAL		code 213	
				engr	0° ±2°	size A		sheet 7	
				chr	T.BRUNGARD 11/19/99	scale 1:1		dwg no 73933	
				oppd	M.STRAWER 11/19/99				
					M.STRAWER 11/19/99				
					M.STRAWER 02/29/00				
sheet index	revision sheet								

A

B

1 | 2

3 |

4

1 | 2

Pro/E

3 |

code code 22526

4

PDM: Rev:AB STATUS:Released Printed: Sep 16, 2009

1 | 2

3 |

4

PRODUCT NUMBER
73933-XXXX
73933-XY YLF

NOTES:

- FOR DIM A AND B SEE SHEET 2 AND UP.
- BODY MATERIAL: LIQUID CRYSTAL  
POLYMER 30 % GLASS.  
FLAME RETARDANT ACC. UL 94-V0.
- PIN MATERIAL:  
PHOSPHOR BRONZE.
- PLATING ON PRESS-FIT TAIL:  
73933-XXX IS SnPb  
73933-XY YLF IS SN (LEAD FREE)  
PLATING ON CONTACT AREA CONFORMS TO PERFORMANCE LEVEL SHOWN IN TABLE BELOW.
- PRODUCT MARKING:  
PART NUMBER DESIGNATION & BATCH I.D.
- ALL PRODUCTS WITH PART NUMBERS SHOWN IN SUBSEQUENT TABLES WILL BE PACKAGED IN TUBES. IF TRAY PACKAGING IS REQUIRED, A SUFFIX "P" WILL BE ADDED TO THE END OF THE PART NUMBER. EXAMPLE: XXXXX-XXXP
- PRODUCT SPECIFICATION GS-12-180  
APPLICATION SPECIFICATION BUS-20-073
- AFTER INSERTION INTO CIRCUIT BOARD WITH QUALIFIED TOOL.
- THE PRODUCTS WHERE THE PART NUMBER ENDS IN LF MEET THE EUROPEAN UNION DIRECTIVES AND OTHER COUNTRY REGULATIONS AS DESCRIBED IN GS-22-008.

PLATING IN CONTACT AREA		NOTES
DASH NUMBER	PERFORMANCE LEVEL	-
-N1YYY	TELCORDIA CO (NXT)	-
-N5YYY	TELCORDIA UE (NXT)	-
-1YYY	TELCORDIA CO	-
-2YYY	TELECOM CLASS	-
-3YYY	IEC CLASS I	-
-5YYY	TELCORDIA UE	-
-N1YY YLF	TELCORDIA CO (NXT) IEC CLASS I	SEE NOTE 9
-N5YY YLF	TELCORDIA UE (NXT)	SEE NOTE 9
-1YY YLF	TELCORDIA CO	SEE NOTE 9
-2YY YLF	TELECOM CLASS	SEE NOTE 9
-5YY YLF	TELCORDIA UE	SEE NOTE 9

ALL PRODUCTS EXCEPT THOSE WITH PART NUMBERS CONTAINING (DRAWING NO.)-N1--- OR (DRAWING NO.)-N5-- WILL WITHSTAND EXPOSURE TO 260°C FOR 60 SECONDS IN A CONVECTION, INFRA-RED OR VAPOR PHASE REFLOW OVEN. PART NUMBERS (DRAWING NO.)-N1--- AND (DRAWINGS NO.)-N5-- WILL NOT WITHSTAND REFLOW AND Au CONTACT SURFACE OF THE CONTACTS SHALL BE EXPOSED TO A MAXIMUM 140°C FOR NO LONGER THAN 15 SECONDS IN A WAVE SOLDER APPLICATION.

mat'l code		--		tolerances unless otherwise specified		CUSTOMER		FCJ		www.fciconnect.com	
ltr	ecn no.	dr	date	linear	0.X ±0.3	projection	COPY	METRAL SIGNAL HEADER			
AB					0.XX ±0.13	MM		5 MOD, 5 ROW PRESS-FIT			
				angles	.XXX ±.051	MM		product family	METRAL	code	213
				dr	T.BRUNGARD 11/19/99	MM		size	dwg no		sheet
				eng	M.STRAWER 11/19/99	MM			73933		8
				chr	M.STRAWER 11/19/99	MM					
				appd	M.STRAWER 02/29/00	MM					
sheet index	revision sheet										



This document is the property of and embodies CONFIDENTIAL and PROPRIETARY information of FCJ. No part of the information shown on this document may be used in any way or disclosed to others without the written consent of FCJ. Copyright FCJ.

REV E - 2006-04-18

1 | 2

3 |

4

Pro/E

code code 22526

**PDM: Rev:AB** STATUS: **Released** Printed: Sep 16, 2009