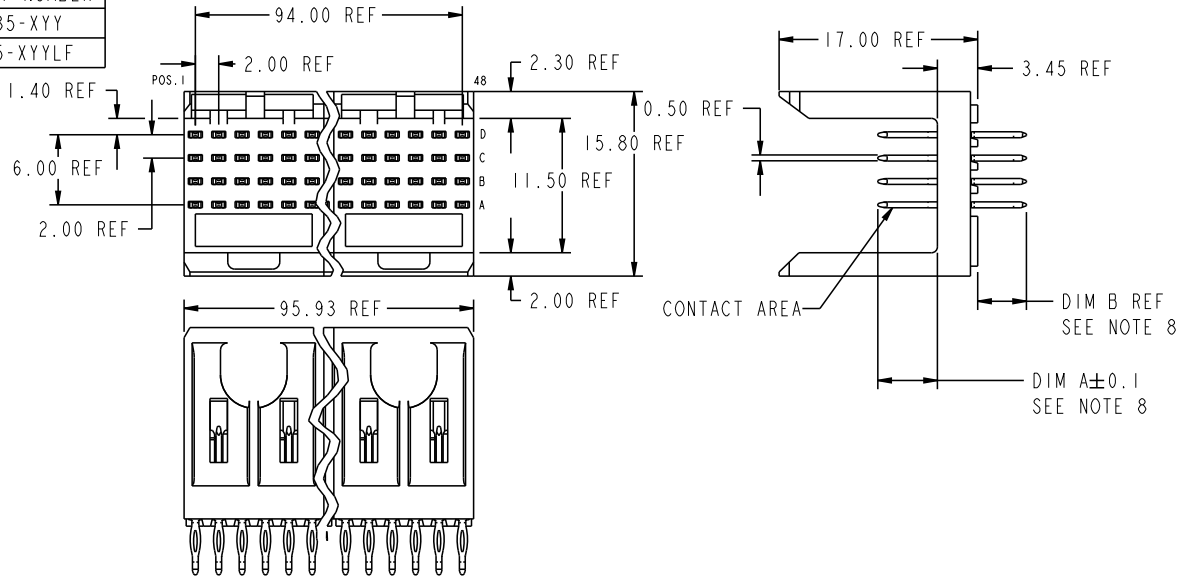


PRODUCT NUMBER  
70235-XYX  
70235-XYXLF



PLATING IN CONTACT AREA

DASH NUMBER	PERFORMANCE LEVEL	NOTES
-AYY	TELCORDIA CO	SEE NOTE 9
-MYX	.38µm GOLD MIN.	-
-N1YY	TELCORDIA CO (NXT)	-
-N5YY	TELCORDIA UE (NXT)	-
-1YY	TELCORDIA CO	-
-2YY	TELECOM CLASS	-
-3YY	IEC CLASS I	-
-5YY	TELCORDIA UE	-
-AYXLF	TELCORDIA CO	SEE NOTE 10
-N1XXLF	TELCORDIA CO (NXT) IEC CLASS I	SEE NOTE 10
-N5XXLF	TELCORDIA UE (NXT)	SEE NOTE 10
-1XXLF	TELCORDIA CO IEC CLASS I	SEE NOTE 10
-2XXLF	TELECOM CLASS	SEE NOTE 10
-5XXLF	TELCORDIA UE	SEE NOTE 10

mat'l code				tolerances unless otherwise specified		CUSTOMER	FCJ	
ltr	ecm no.	dr	date	linear	angles	COPY	www.fcjconnect.com	
AG	V06-0498	DCH	2006-05-31	0.xx ±0.13	0° ±2°	projection	title METRAL SIGNAL HEADER 8 MOD, 4 ROW PRESS-FIT	
AH	DG09-0256	TER	2009-08-19	.xxx ±.051		MM	product family METRAL	code 213
AC	V04-0554	TAB	06/07/04			scale 2:1	size	sheet 1 of 21
AD	V05-0079	HTB	02/03/05	dr	T.BRUNGARD	11/19/99	dwg no	70235
AE	V05-0359	DAI	04/21/05	engr	M.STRAWER	11/19/99		
AF	V05-1030	LP	11/18/05	chr	M.STRAWER	11/19/99		
				oppd	M.STRAWER	02/29/00		
sheet index	revision	sheet	1	AH	21			



This document is the property of and embodies CONFIDENTIAL and PROPRIETARY information of FCJ. No part of the information shown on this document may be used in any way or disclosed to others without the written consent of FCJ. Copyright FCJ.

REV E - 2006-04-18

Pro/E

PDM: Rev:AH

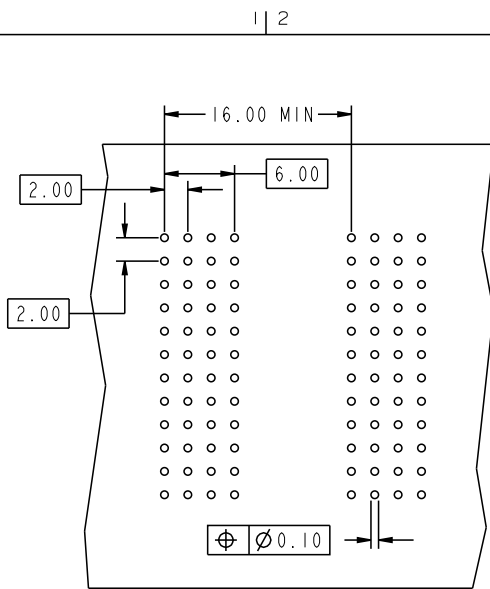
STATUS:Released

Printed: Feb 20, 2010

code code 22526



This document is the property of and embodies CONFIDENTIAL and PROPRIETARY information of FCJ. No part of the information shown on this document may be used in any way or disclosed to others without the written consent of FCJ. Copyright FCJ.



REQUIRED PC BOARD LAYOUT  
COMPONENT SIDE

SEE PRINT 58351 FOR  
ADDITIONAL PCB INFORMATION

KEY		
CODE	DIMENSIONS	
	DIM "A" MATE	DIM "B" TAIL
1	5.00	4.30
2	5.75	4.30
3	6.50	4.30
4	7.25	4.30
5	5.00	13.60
6	5.75	13.60
7	6.50	13.60
8	7.25	13.60
9	5.00	17.00
10	5.75	17.00
11	6.50	17.00
12	7.25	17.00
13	8.25	4.30
14	8.25	13.60
15	8.25	17.00
19	8.00	4.30
20	8.00	13.60
21	8.00	17.00

mat'l code				tolerances unless otherwise specified		CUSTOMER		FCJ	
lfr	ecm no.	dr	date	linear	0.X ±0.3	projection	COPY	www.fcjconnect.com	
AH					0.XX ±0.13			title METRAL SIGNAL HEADER	
				angles	.XXX ±.051	$\varnothing \pm 2^\circ$		8 MOD, 4 ROW PRESS-FIT	
				dr	T.BRUNGARD 11/19/99			product family	METRAL
				engr	M.STRAWER 11/19/99	scale	A	size	dwg no
				chr	M.STRAWER 11/19/99	1:1		70235	code 213
				oppd	M.STRAWER 02/29/00				sheet 2
sheet index	revision sheet								
								code code	22526

PDM: Rev:AH

STATUS:Released

Printed: Feb 20, 2010

























This document is the property of and embodies CONFIDENTIAL and PROPRIETARY information of FCI. No part of the information shown on this document may be used in any way or disclosed to others without the written consent of FCI. Copyright FCI.

METRAL P/N	ROW	CONTACT MOD. 1					MOD. 2					MOD. 3					MOD. 4					MOD. 5					MOD. 6					MOD. 7					MOD. 8																
		1	2	3	4	5	6	7	8	9	10	11	12	13	14	15	16	17	18	19	20	21	22	23	24	25	26	27	28	29	30	31	32	33	34	35	36	37	38	39	40	41	42	43	44	45	46	47	48				
70235-X60 SEE NOTE 11 LEAD FREE OPTION	D	10	10	10	10	10	10	10	10	10	10	10	10	10	10	10	10	10	10	10	10	10	10	10	10	10	10	10	10	10	10	10	10	10	10	10	10	10	10	10	10	10	10	10	10	10	10	10	10	10	10		
	C	10	10	10	10	10	10	10	10	10	10	10	10	10	10	10	10	10	10	10	10	10	10	10	10	10	10	10	10	10	10	10	10	10	10	10	10	10	10	10	10	10	10	10	10	10	10	10	10	10	10	10	10
	B	12	12	12	12	12	12	12	12	12	12	12	12	12	12	12	12	12	12	12	12	12	12	12	12	12	12	12	12	12	12	12	12	12	12	12	12	12	12	12	12	12	12	12	12	12	12	12	12	12	12	12	12
	A	10	10	10	10	10	10	10	10	10	10	10	10	10	10	10	10	10	10	10	10	10	10	10	10	10	10	10	10	10	10	10	10	10	10	10	10	10	10	10	10	10	10	10	10	10	10	10	10	10	10	10	10

mat'l code				tolerances unless otherwise specified				CUSTOMER		FCI		www.fciconnect.com	
lfr	ecn no.	dr	date	0. X ±0.3				COPY		title		METRAL SIGNAL HEADER	
AH				linear 0. XXX ±.051				projection		8 MOD, 4 ROW PRESS-FIT		product family METRAL	
				angles 0° ±2°				MM		size		code 213	
				dr T. BRUNGARD 11/19/99				scale		dwg no		sheet 13	
				engr M. STRAWSER 11/19/99				1:1		70235			
				chr M. STRAWSER 11/19/99									
				appd M. STRAWSER 02/29/00									
sheet index	revision	sheet											

REV E - 2004-04-18

















1 | 2

3 |

4

PRODUCT NUMBER
70235-XYX
70235-XYXLF

NOTES:

1. FOR DIM A AND B SEE SHEET 2 AND UP.
2. BODY MATERIAL: LIQUID CRYSTAL  
POLYMER 30 % GLASS.  
FLAME RETARDANT ACC. UL 94-V0.
3. PIN MATERIAL:  
PHOSPHOR BRONZE.
4. PLATING ON PRESS-FIT TAIL:  
70235 -XYX IS SnPb  
70235-XYXLF IS SN (LEAD FREE)  
PLATING ON CONTACT AREA CONFORMS TO PERFORMANCE LEVEL SHOWN IN TABLE.
5. PRODUCT MARKING:  
PART NUMBER DESIGNATION & BATCH I.D.
6. ALL PRODUCTS WITH PART NUMBERS SHOWN IN SUBSEQUENT TABLES WILL BE PACKAGED IN TUBES. IF TRAY PACKAGING IS REQUIRED, A SUFFIX "P" WILL BE ADDED TO THE END OF THE PART NUMBER. EXAMPLE: XXXXX-XXXP OR XXXXX-XXXPLF
7. PRODUCT SPECIFICATION GS-12-180  
APPLICATION SPECIFICATION BUS-20-073
- 8 AFTER INSERTION INTO CIRCUIT BOARD WITH QUALIFIED TOOL.
- 9 -A PLATING HAS Au FLASH IN PRESS FIT AREA (LEAD FREE).
- 10 THE PRODUCTS WHERE THE PART NUMBER ENDS IN LF MEET THE EUROPEAN UNION DIRECTIVES AND OTHER COUNTRY REGULATIONS AS DESCRIBED IN GS-22-008.
- 11 FOR LEAD FREE PART NUMBERS, ADD AN "LF" SUFFIX. EXAMPLE: 70235-X01LF
12. ALL PRODUCTS EXCEPT THOSE WITH PART NUMBERS CONTAINING (DRAWING NO.)-N1--- OR (DRAWING NO.)-N5---WILL WITHSTAND EXPOSURE TO 260°C FOR 60 SECONDS IN A CONVECTION, INFRA-RED OR VAPOR PHASE REFLOW OVEN. PART NUMBERS (DRAWING NO.)-N1--- AND (DRAWINGS NO.)-N5---WILL NOT WITHSTAND REFLOW AND Au CONTACT SURFACE OF THE CONTACTS SHALL BE EXPOSED TO A MAXIMUM 140°C FOR NO LONGER THAN 15 SECONDS IN A WAVE SOLDER APPLICATION.

A

A



This document is the property of and embodies CONFIDENTIAL and PROPRIETARY information of FCI. No part of the information shown on this document may be used in any way or disclosed to others without the written consent of FCI. Copyright FCI.

B

B

mat'l code		--		tolerances unless otherwise specified		CUSTOMER		FCI		www.fciconnect.com	
ltr	ecn no.	dr	date	linear	0, X ±0,3	projection	COPY	title METRAL SIGNAL HEADER 8 MOD, 4 ROW PRESS-FIT			
AH				angles	0, XX ±0,13			product family METRAL		code	213
				dr	.XXX ±.051	MM	scale	size	dwg no	sheet	21
				eng	0° ±2°		1:1	A	70235		
				chr							
				appd							
sheet index	revision sheet										

1 | 2

3 |

4

Pro/E

code code 22526

PDM: Rev:AH STATUS:Released Printed: Feb 20, 2010

REV E - 2006-04-18