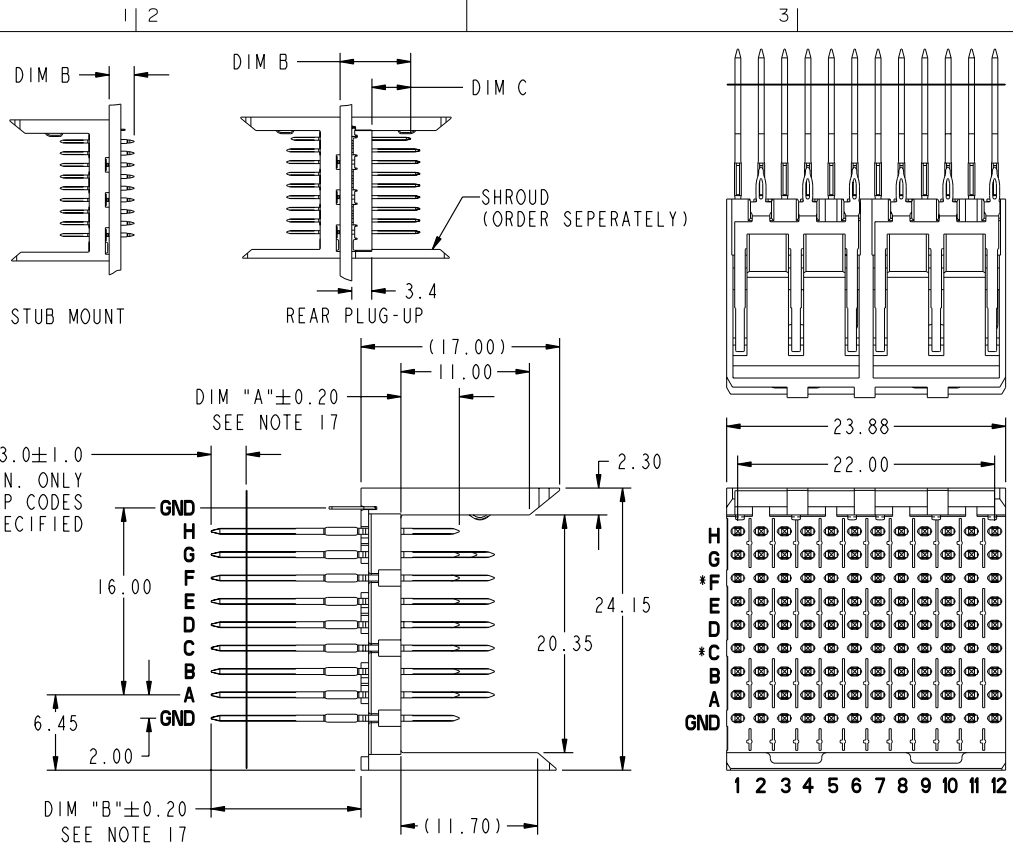


Tous droits strictement réservés. Reproduction ou communication o des liens interdite sous quelque forme que ce soit sans autorisation écrite du propriétaire. Propriete de c FCI. Droits de reproduction FCI.

All rights strictly reserved. Reproduction or issue to third parties in any form whatever is not permitted without written authority from the proprietor. Property of FCI. Copyright FCI.

PRODUCT NUMBER
63784-XXXX
63784-XXXXLF



mat'l code				tolerances unless otherwise specified				CUSTOMER		 www.fciconnect.com	
lfr	ecn no.	dr	date					COPY		title	
AA	V04-0538	TAB	05/27/04	linear				projection		HEADER - SELECT LOAD	
AB	V05-0118	TAB	02/10/05							STR. P.F. EXT. 8x12	
AC	V05-0179	DAI	02/21/05	angles						product family METRAL 1000	
AD	V05-0271	DAI	03/29/05	dr	E. KROPER.	1/10/01	MM		size		
AE	V05-0533	TAB	06/02/05	engr	J. VOLSTORF	1/10/01	scale		dwg no		
AF	V05-1022	LP	11/78/05	chr	J. VOLSTORF	1/10/01			63784		
AG	V05-1125	LP	12/19/05	oppd	J. VOLSTORF	1/10/01			code		
sheet index	revision sheet	AG	AG	AG	AG	AG	AG	AG	AG	AG	
		1	2	3	4	5	6	7	8	9	

Pro/E 3 cage code 22526 4

PDM: Rev:AG STATUS:Released Printed: Feb 10, 2006

Tous droits strictement réservés. Reproduction ou communication o des liens interdite sous quelque forme que ce soit sans autorisation écrite du propriétaire. Propriété de c FCI. Droits de reproduction FCI.



All rights strictly reserved. Reproduction or issue to third parties in any form whatever is not permitted without written authority from the proprietor. Property of FCI. Copyright FCI.

INFORMATION FOR MATING WITH 74981 METRAL 1000 RECEPTACLES										
PIN CODES										
DIM A	DIM B									
		4.30	12.20	12.95	13.70	14.45	15.20	15.70	16.40	17.10
	5.00	1*	22	30	5	35	48	40	65	9
	5.75	2*	44	31	6	36	49	25	66	10
	6.50	3*	45	32	7	37	50	41	24	11
	7.25	4*	46	33	8	38	51	42	67	12
8.00	19*	47	34	20	39	52	43	68	21	
RESTRICTION ON CURCUIT BOARD THICKNESS RANGE FOR PIN POSITIONS A, B, C, D, E, F, G & H										
DIM A	DIM B									
		4.30	12.20	12.95	13.70	14.45	15.20	15.70	16.40	17.10
	MIN THICKNESS	1.60	2.95	2.95	2.95	3.05	3.80	4.30	5.00	5.70
MAX THICKNESS	NONE	3.80	4.55	5.30	6.05	6.80	7.30	8.00	8.70	
RESTRICTION ON CURCUIT BOARD THICKNESS RANGE FOR PIN POSITION 'GND' **										
DIM A	DIM B									
		4.30	12.20	12.95	13.70	14.45	15.20	15.70	16.40	17.10
	MIN THICKNESS	1.60	2.95	3.25	4.00	4.75	5.50	6.00	6.70	7.40
MAX THICKNESS	NONE	4.20	4.95	5.70	6.45	7.20	7.70	8.40	9.10	

PRODUCT NUMBER	CIRCUIT BOARD THICKNESS RANGE FOR REAR PLUG-UP CODES	
	MIN	MAX
63784-X002	*2.30-2.95mm	5.30mm
63784-X003	*2.30-2.95mm	5.30mm
63784-X005	*2.30-2.95mm	5.30mm
63784-X006	*2.30-2.95mm	5.30mm
63784-X009	4.75mm	6.05mm
63784-X012	2.95mm	3.80mm
63784-X016	5.50mm	6.80mm
63784-X019	*2.30-5.70mm	7.30mm
63784-X020	*2.30-4.30mm	5.70mm
63784-X021	*2.30-4.30mm	5.70mm
63784-X022	*2.30-4.30mm	5.70mm
63784-X023	*2.30-4.30mm	5.70mm
63784-X024	*2.30-4.30mm	5.70mm
63784-X025	*2.30-4.30mm	5.70mm
63784-X026	*2.30-4.30mm	5.70mm
63784-X032	*2.30-4.30mm	5.70mm
63784-X033	*2.30-4.30mm	5.70mm

* STUB PINS - NO REAR PLUG-UP WITH PIN ALIGNER
 ** THE GREATEST RANGE OCCURS WHEN THE B DIMENSION OF PIN 'GND' IS ONE SIZE SHORTER THEN THE OTHER PINS.
 *** REAR PLUG-UP CODES WITHOUT PIN-ALIGNER

* NOT A STANDARD METRAL 1000 REAR PLUG-UP APPLICATION

mat'l code				tolerances unless otherwise specified				CUSTOMER		www.fciconnect.com	
lfr	ecm no.	dr	date	linear				COPY		title	
AG	-	-	-	angles				projection		HEADER - SELECT LOAD STR. P.F. EXT. 8x12	
										product family	
										METRAL 1000	
								size		code	
										213	
										sheet	
										2	
sheet index				revision sheet							

1 | 2 Pro/E 3 | 4

PDM: Rev:AG STATUS:Released Printed: Feb 10, 2006

code code 22526

Tous droits strictement réservés. Reproduction ou communication o des liens interdite sous quelque forme que ce soit sans autorisation écrite du propriétaire. Propriété de c FCI. Droits de reproduction FCI.

All rights strictly reserved. Reproduction or issue to third parties in any form whatever is not permitted without written authority from the proprietor. Property of FCI. Copyright FCI.



INFORMATION FOR MATING WITH 52066 METRAL 4000 RECEPTACLES										
PIN CODES										
DIM A		DIM B								
		4.30	12.20	12.95	13.70	14.45	15.20	15.70	16.40	17.10
5.00	1*	22	30	5	35	48	40	65	9	
5.75	2*	44	31	6	36	49	25	66	10	
6.50	3*	45	32	7	37	50	41	24	11	
7.25	4*	46	33	8	38	51	42	67	12	
8.00	19*	47	34	20	39	52	43	68	21	
RESTRICTION ON CURCUIT BOARD THICKNESS RANGE FOR PIN POSITIONS A, B, D, E, G & H										
DIM A		DIM B								
		4.30	12.20	12.95	13.70	14.45	15.20	15.70	16.40	17.10
MIN THICKNESS		1.60	2.95	2.95	3.30	4.05	4.80	5.30	6.00	6.70
MAX THICKNESS		NONE	3.80	4.55	5.30	6.05	6.80	7.30	8.00	8.70
RESTRICTION ON CURCUIT BOARD THICKNESS RANGE FOR PIN POSITIONS C & F										
DIM A		DIM B								
		4.30	12.20	12.95	13.70	14.45	15.20	15.70	16.40	17.10
MIN THICKNESS		1.60	2.95	2.95	2.95	3.05	3.80	4.30	5.00	5.70
MAX THICKNESS		NONE	3.80	4.55	5.30	6.05	6.80	7.30	8.00	8.70
RESTRICTION ON CURCUIT BOARD THICKNESS RANGE FOR PIN POSITION 'GND' **										
DIM A		DIM B								
		4.30	12.20	12.95	13.70	14.45	15.20	15.70	16.40	17.10
MIN THICKNESS		1.60	2.95	3.25	4.00	4.75	5.50	6.00	6.70	7.40
MAX THICKNESS		NONE	4.20	4.95	5.70	6.45	7.20	7.70	8.40	9.10

* STUB PINS - NO REAR PLUG-UP
 ** THE GREATEST RANGE OCCURS WHEN THE B DIMENSION OF PIN 'GND' IS ONE SIZE SHORTER THEN THE OTHER PINS.

PRODUCT NUMBER	CIRCUIT BOARD THICKNESS RANGE FOR REAR PLUG-UP CODES	
	MIN	MAX
63784-X002	*2.30-3.30mm	5.30mm
63784-X003	*2.30-3.30mm	5.30mm
63784-X005	*2.30-3.30mm	5.30mm
63784-X006	**	**
63784-X009	4.80mm	6.05mm
63784-X012	**	**
63784-X016	5.50mm	6.80mm
63784-X019	*2.30-6.70mm	7.30mm
63784-X020	*2.30-5.30mm	5.70mm
63784-X021	*2.30-5.30mm	5.70mm
63784-X022	*2.30-5.30mm	5.70mm
63784-X023	*2.30-5.30mm	5.70mm
63784-X024	*2.30-5.30mm	5.70mm
63784-X025	*2.30-5.30mm	5.70mm
63784-X026	*2.30-5.30mm	5.70mm
63784-X032	**	**
63784-X033	*2.30-5.30mm	5.70mm

* NOT A STANDARD METRAL 4000 REAR PLUG-UP APPLICATION
 ** CANNOT BE MATED TO A METRAL 4000 RECEPTACLE

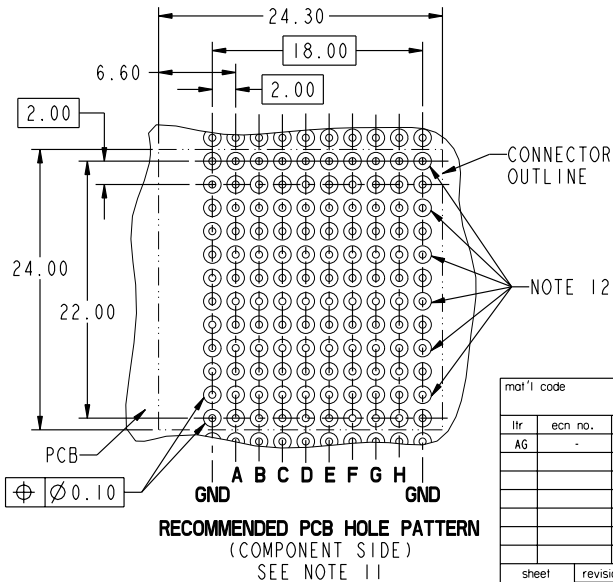
mat'l code				tolerances unless otherwise specified				CUSTOMER		FCI		www.fciconnect.com	
lfr	ecn no.	dr	date	linear				COPY		title		code	
AG	-	-	-					projection		HEADER - SELECT LOAD STR. P.F. EXT. 8x12		213	
				angles						product family		METRAL 1000	
				dr E. KROPER. 1/10/01				MM		size		3	
				engr J. VOLSTORF 1/10/01				scale		dwg no		63784	
				chr J. VOLSTORF 1/10/01				1:1		A		sheet	
				appd J. VOLSTORF 1/10/01								3	
sheet index		revision sheet											

1 | 2 Pro/E 3 | 4 cage code 22526

Tous droits strictement réservés. Reproduction ou communication o des liens interdite sous quelque forme que ce soit sans autorisation écrite du propriétaire. Propriété de c FCI. Droits de reproduction FCI.

All rights strictly reserved. Reproduction or issue to third parties in any form whatever is not permitted without written authority from the proprietor. Property of FCI. Copyright FCI.

PRODUCT NUMBER	PIN CONTACT AREAS TO RECEPTACLE	PRESS FIT PIN TO PCB	GROUND SPRING CONTACT FINGERS (19)	GROUND SPRING EON PRESS FIT TO PCB	FOR REAR PLUG-UP APPLICATIONS USE SHROUD
63784-1YYY	0.8μm Au OVER Ni	SnPb OVER Ni	0.8μm Au OVER Ni	SnPb OVER Ni	74993-102
63784-2YYY	2.0μm Au OVER Ni	SnPb OVER Ni	1.3μm Au OVER Ni	SnPb OVER Ni	74993-302
63784-3YYY	1.3μm Au OVER Ni	SnPb OVER Ni	1.3μm Au OVER Ni	SnPb OVER Ni	74993-302
63784-5YYY	1.3μm GXT OVER Ni	SnPb OVER Ni	1.3μm GXT OVER Ni	SnPb OVER Ni	74993-502
63784-9YYY	0.8μm GXT OVER Ni	SnPb OVER Ni	0.8μm Au OVER Ni	SnPb OVER Ni	74993-102
63784-AYYY	0.8μm Au OVER Ni	0.08μm Au OVER Ni	0.8μm Au OVER Ni	SnPb OVER Ni	74993-102
63784-1YYYYLF	0.8μm Au OVER Ni	Sn OVER Ni	0.8μm Au OVER Ni	Sn OVER Ni	84625-102
63784-2YYYYLF	2.0μm Au OVER Ni	Sn OVER Ni	1.3μm Au OVER Ni	Sn OVER Ni	84625-302
63784-3YYYYLF	1.3μm Au OVER Ni	Sn OVER Ni	1.3μm Au OVER Ni	Sn OVER Ni	84625-302
63784-5YYYYLF	1.3μm GXT OVER Ni	Sn OVER Ni	1.3μm GXT OVER Ni	Sn OVER Ni	84625-502
63784-9YYYYLF	0.8μm GXT OVER Ni	Sn OVER Ni	0.8μm Au OVER Ni	Sn OVER Ni	84625-102
63784-AYYYLF	0.8μm Au OVER Ni	0.08μm Au OVER Ni	0.8μm Au OVER Ni	Sn OVER Ni	84625-102



PRESS-FIT HOLES *	OPTION 1
HOLE DIAMETER AFTER PLATING	Ø 0.65-0.80
DRILLED HOLE	Ø 0.81-0.86 (Ø 0.85 DRILL)
COPPER PLATING	0.025 MIN
SnPb PLATING	0.005-0.015

* SEE PRINT 58351 FOR ADDITIONAL PCB INFO.

mat'l code				tolerances unless otherwise specified		CUSTOMER		 www.fciconnect.com	
lfr	ecn no.	dr	date	linear	projection	COPY		title	
AG	-	-	-					HEADER - SELECT LOAD STR. P.F. EXT. 8x12	
				angles				product family	
				dr	E. KROPER.	1/10/01	METRAL 1000		code
				engr	J. VOLSTORF	1/10/01	size		213
				chr	J. VOLSTORF	1/10/01	dwg no		sheet
				appd	J. VOLSTORF	1/10/01	63784		4
sheet index	revision sheet								

Pro/E 3 cage code 22526 4

PDM: Rev:AG STATUS:Released Printed: Feb 10, 2006

Tous droits strictement réservés. Reproduction ou communication à des tiers interdite sous quelque forme que ce soit sans autorisation écrite du propriétaire. Propriété de c FCI. Droits de reproduction FCI.

FCI

All rights strictly reserved. Reproduction or issue to third parties in any form whatever is not permitted without written authority from the proprietor. Property of FCI. Copyright FCI.

Table with METRAL P/N 63784-X025 and CONTACT CODE grid for rows H through GND.

Table with METRAL P/N 63784-X026 and CONTACT CODE grid for rows H through GND.

Table with METRAL P/N 63784-X027 and CONTACT CODE grid for rows H through GND.

Table with METRAL P/N 63784-X028 and CONTACT CODE grid for rows H through GND.

Table with METRAL P/N 63784-X029 and CONTACT CODE grid for rows H through GND.

Table with METRAL P/N 63784-X030 and CONTACT CODE grid for rows H through GND.

Table with METRAL P/N 63784-X031 and CONTACT CODE grid for rows H through GND.

Table with METRAL P/N 63784-X032 and CONTACT CODE grid for rows H through GND.

Table with METRAL P/N 63784-X033 and CONTACT CODE grid for rows H through GND.

Table with METRAL P/N 63784-X034 and CONTACT CODE grid for rows H through GND.

Table with METRAL P/N 63784-X035 and CONTACT CODE grid for rows H through GND.

Table with METRAL P/N 63784-X036 and CONTACT CODE grid for rows H through GND.

- * REAR PLUG-UP CODES WITH PIN ALIGNER
** CANNOT BE MATED TO A METRAL 4000 RECEPTACLE
*** REAR PLUG-UP CODES WITHOUT PIN ALIGNER

Technical drawing header containing customer information (FCI), title (HEADER - SELECT LOAD STR. P.F. EXT. 8x12), scale (1:1), and drawing number (63784).

PDM: Rev:AG

STATUS: Released

Printed: Feb 10, 2006

Tous droits strictement réservés. Reproduction ou communication o des liens interdite sous quelque forme que ce soit sans autorisation écrite du propriétaire. Propriete de c FCI. Droits de reproduction FCI.



All rights strictly reserved. Reproduction or issue to third parties in any form whatever is not permitted without written authority from the proprietor. Property of FCI. Copyright FCI.

METRAL P/N	ROW	CONTACT CODE											
		1	2	3	4	5	6	7	8	9	10	11	12
63784-X037 FOR LEAD FREE SEE NOTE 18	H	3	2	2	3	2	2	2	2	2	2	3	2
	G	3	2	2	3	2	3	2	3	2	3	2	2
	F	3	2	2	3	3	3	3	2	2	3	3	2
	E	3	2	2	3	2	3	2	3	2	2	3	2
	D	3	2	2	3	2	3	2	3	2	2	3	3
	C	3	2	2	3	3	3	3	2	3	2	3	2
	B	3	2	2	3	2	3	2	2	2	2	3	2
	A	3	2	2	3	2	3	2	2	2	2	3	2
GND	2	2	2	2	2	2	2	2	2	2	2	2	

METRAL P/N	ROW	CONTACT CODE											
		1	2	3	4	5	6	7	8	9	10	11	12
63784-X038 FOR LEAD FREE SEE NOTE 18	H	2	2	2	19	-	19	-	2	-	2	-	19
	G	2	2	2	19	-	19	-	2	-	2	-	19
	F	2	2	2	19	-	19	-	2	-	2	-	19
	E	2	2	2	19	-	19	-	2	-	2	-	19
	D	2	2	2	19	-	19	-	2	-	2	-	19
	C	2	2	2	19	-	19	-	2	-	2	-	19
	B	2	2	2	19	-	19	-	2	-	2	-	19
	A	2	2	2	19	-	19	-	2	-	2	-	19
GND	-	-	-	-	-	-	-	-	-	-	-	-	

METRAL P/N	ROW	CONTACT CODE											
		1	2	3	4	5	6	7	8	9	10	11	12
63784-X039 FOR LEAD FREE SEE NOTE 18	H	2	2	2	2	2	2	2	3	3	3	3	3
	G	2	2	2	2	2	2	2	3	3	3	3	3
	F	2	2	2	3	2	2	2	3	3	3	3	3
	E	2	2	2	1	2	2	2	2	3	3	3	3
	D	3	1	2	1	2	2	2	2	3	3	3	3
	C	2	2	2	1	2	2	2	2	3	3	3	3
	B	2	2	2	1	2	2	2	2	3	3	3	3
	A	3	1	2	1	2	2	2	2	3	3	3	3
GND	1	1	1	1	1	1	1	1	1	1	1	1	

METRAL P/N	ROW	CONTACT CODE											
		1	2	3	4	5	6	7	8	9	10	11	12
63784-X040 FOR LEAD FREE SEE NOTE 18	H	3	3	3	3	3	3	2	2	2	2	2	2
	G	3	3	3	3	3	3	2	2	2	2	2	2
	F	3	3	3	3	3	3	2	2	2	2	2	2
	E	3	3	3	3	3	3	2	2	2	2	2	2
	D	3	3	3	3	3	3	2	2	2	2	2	2
	C	3	3	3	3	3	3	2	2	2	2	2	2
	B	3	3	3	3	3	3	2	2	2	2	2	2
	A	3	3	3	3	3	3	2	2	2	2	2	2
GND	1	1	1	1	1	1	1	1	1	1	1	1	

METRAL P/N	ROW	CONTACT CODE											
		1	2	3	4	5	6	7	8	9	10	11	12
63784-X041 FOR LEAD FREE SEE NOTE 18	H	2	2	2	2	2	2	2	2	2	2	1	2
	G	2	2	2	2	2	2	2	2	2	2	1	2
	F	2	2	2	2	2	2	2	2	2	2	1	2
	E	2	2	2	2	2	2	2	2	2	2	2	2
	D	2	2	2	2	2	2	2	2	2	2	2	3
	C	2	2	2	2	2	2	2	2	2	2	2	3
	B	2	2	2	2	2	2	2	2	2	2	2	3
	A	2	2	2	2	2	2	2	2	2	2	2	1
GND	1	1	1	1	1	1	1	1	1	1	1	1	

METRAL P/N	ROW	CONTACT CODE											
		1	2	3	4	5	6	7	8	9	10	11	12
63784-X042 FOR LEAD FREE SEE NOTE 18	H	1	2	2	2	2	2	1	2	2	2	2	3
	G	2	2	2	2	2	2	2	2	2	2	2	3
	F	2	2	2	2	2	2	2	2	2	2	2	3
	E	2	2	2	2	2	2	2	2	2	2	2	3
	D	2	2	2	2	2	2	2	2	2	2	2	3
	C	2	2	2	2	2	2	2	2	2	2	2	3
	B	2	2	2	2	2	2	2	2	2	2	2	3
	A	2	2	2	2	2	2	2	2	2	2	2	3
GND	1	1	1	1	1	1	1	1	1	1	1	1	

METRAL P/N	ROW	CONTACT CODE											
		1	2	3	4	5	6	7	8	9	10	11	12
63784-X043 FOR LEAD FREE SEE NOTE 18	H	2	2	2	2	1	2	1	2	2	2	2	3
	G	2	2	2	2	1	2	2	2	2	2	2	3
	F	2	2	2	2	1	2	2	2	2	2	2	3
	E	2	2	2	2	1	2	2	2	2	2	2	3
	D	2	2	2	2	3	2	2	2	2	2	2	3
	C	2	2	2	2	3	2	2	2	2	2	2	3
	B	2	2	2	2	3	2	2	2	2	2	2	3
	A	2	2	2	2	3	2	2	2	2	2	2	3
GND	1	1	1	1	1	1	1	1	1	1	1	1	

mat'l code		--		tolerances unless otherwise specified		CUSTOMER		 www.fciconnect.com	
lfr	ecr no.	dr	date	linear		projection	COPY	title	
AG								HEADER - SELECT LOAD	
				angles				STR. P.F. EXT. 8x12	
				dr	E. KROPER.	1/10/01		product family	METRAL 1000
				engr	J. VOLSTORF	1/10/01	size	dwg no	213
				chr	J. VOLSTORF	1/10/01	scale	63784	sheet 8
				oppd	J. VOLSTORF	1/10/01	1:1		
sheet index	revision								
	sheet								

Pro/E 3 code code 22526 4

PDM: Rev:AG STATUS:Released Printed: Feb 10, 2006

Tous droits strictement réservés. Reproduction ou communication o des tiers interdite sous quelque forme que ce soit sans autorisation écrite du propriétaire. Propriété de c FCI. Droits de reproduction FCI.

All rights strictly reserved. Reproduction or issue to third parties in any form whatever is not permitted without written authority from the proprietor. Property of FCI. Copyright FCI.



PRODUCT NUMBER
63784-XXXX
63784-XXXXLF

NOTES:

- SEE APPLICATION SPECIFICATION GS-20-010 FOR INFORMATION ON AVAILABLE TOOLING, CURCUIT BOARD DESIGN CONSIDERATIONS, REPAIR PROCEDURES AND PRODUCT OFFERINGS.
- SEE FCI PUBLICATION 950511-028 FOR "ELECTRICAL PERFORMANCE DATA FOR DIFFERENTIAL APPLICATIONS."
- SEE FCI PUBLICATION 950511-028 FOR "ELECTRICAL PERFORMANCE DATA FOR SINGLE-ENDED APPLICATION."
- UNLESS OTHERWISE SPECIFIED, ALL DIMENSIONS AND TOLERANCES ARE IN ACCORDANCE WITH ASME Y14.5M, 1994
- HOUSING MATERIAL: LIQUID CRYSTAL POLYMER, 30% GLASS FILLED, FLAME RETARDANT PER UL 94-V0.
- PIN MATERIAL: PHOSPHER BRONZE
- GROUND SPRING MATERIAL: PHOSPHER BRONZE
- PLATING INFORMATION: SEE TABLE
- DIMENSIONAL RESTRICTIONS OF PINS IN HEADERS.
FOR MATING WITH METRAL 1000 RECEPTACLES
DIM A : 5.00mm MIN, 8.00mm MAX FOR ROWS A-H
DIM A : 5.00mm MIN, 5.75mm MAX FOR ROW GND NEXT TO ROW A
DIM C : 5.00mm MIN, 8.00mm MAX FOR ROWS A-H
DIM C : 4.60mm MIN, 6.30mm MAX FOR ROW GND NEXT TO ROW A
FOR MATING WITH METRAL 4000 RECEPTACLES
DIM A : 5.00mm MIN, 6.50mm MAX FOR ROWS A, B, D, E, G & H
DIM A : 5.00mm MIN, 8.00mm MAX FOR ROW C & F
DIM A : 5.00mm MIN, 5.75mm MAX FOR ROW GND NEXT TO ROW A
DIM C : 5.00mm MIN, 7.00mm MAX FOR ROWS A, B, D, E, G & H
DIM C : 5.00mm MIN, 8.00mm MAX FOR ROW C & F
DIM C : 4.60mm MIN, 6.30mm MAX FOR ROW GND NEXT TO ROW A
- THE MIN PCB THICKNESS FOR REAR PLUG-UP APPLICATIONS IS 2.9mm SINCE THE COMPLAINT SECTIONS OF THE GROUND SPRING OF THE HEADER DIRECTLY OPOSE THE GROUND SPRING OF THE SHROUD. THE MIN PCB THICKNESS FOR FRONT PLUG-UP ONLY APPLICATIONS IS 1.6mm.
- THESE HOLES ARE NEEDED FOR REAR PLUG-UP DESIGNS USING A SHROUD AND MAY BE OMITTED FOR FRONT PLUG-UP ONLY DESIGNS.
- THE 'CONNECTOR OUTLINE' IS THE MIN OUTLINE REQUIRED. TO DETERMINE THE OUTLINE NECESSARY TO PERMIT THE VARIOUS TYPES OF REPAIR OPERATIONS, SEE APPLICATION SPECIFICATION GS-20-010.
- CURRENT RATING : 1 AMP PER PIN
- TEMPERATURE RANGE : -55°C TO +105°C
- P/N 63784-X YYY

PIN POSITIONS
PLATING CODE

- AFTER INSERTION INTO CIRCUIT BOARD WITH QUALIFIED TOOL.
 - THE PRODUCTS WHERE THE PART NUMBER ENDS IN LF MEET EUROPEAN UNION DIRECTIVES AND OTHER COUNTRY REGULATIONS AS DESCRIBED IN GS-22-008.
- ALL PRODUCTS WILL WITHSTAND EXPOSURE TO 260°C FOR 60 SECONDS IN A CONVECTION, INFRA-RED OR VAPOR PHASE REFLOW OVEN.
- EQUIVALENT PRECIOUS METAL PLATINGS MAY BE SUBSTITUTED.

mat'l code		--		tolerances unless otherwise specified		CUSTOMER		www.fciconnect.com	
lfr	ecm no.	dr	date	linear		projection	COPY		title
AG	-	-	-						HEADER - SELECT LOAD STR. P.F. EXT. 8x12
				angles			product family	METRAL 1000	code
				dr	E. KROPER.	1/10/01	size	dwg no	213
				engr	J. VOLSTORF	1/10/01	scale		sheet
				chr	J. VOLSTORF	1/10/01	1:1		9
				appd	J. VOLSTORF	1/10/01		63784	
sheet index	revision sheet								

Pro/E 3 cage code 22526 4

PDM: Rev:AG STATUS:Released Printed: Feb 10, 2006