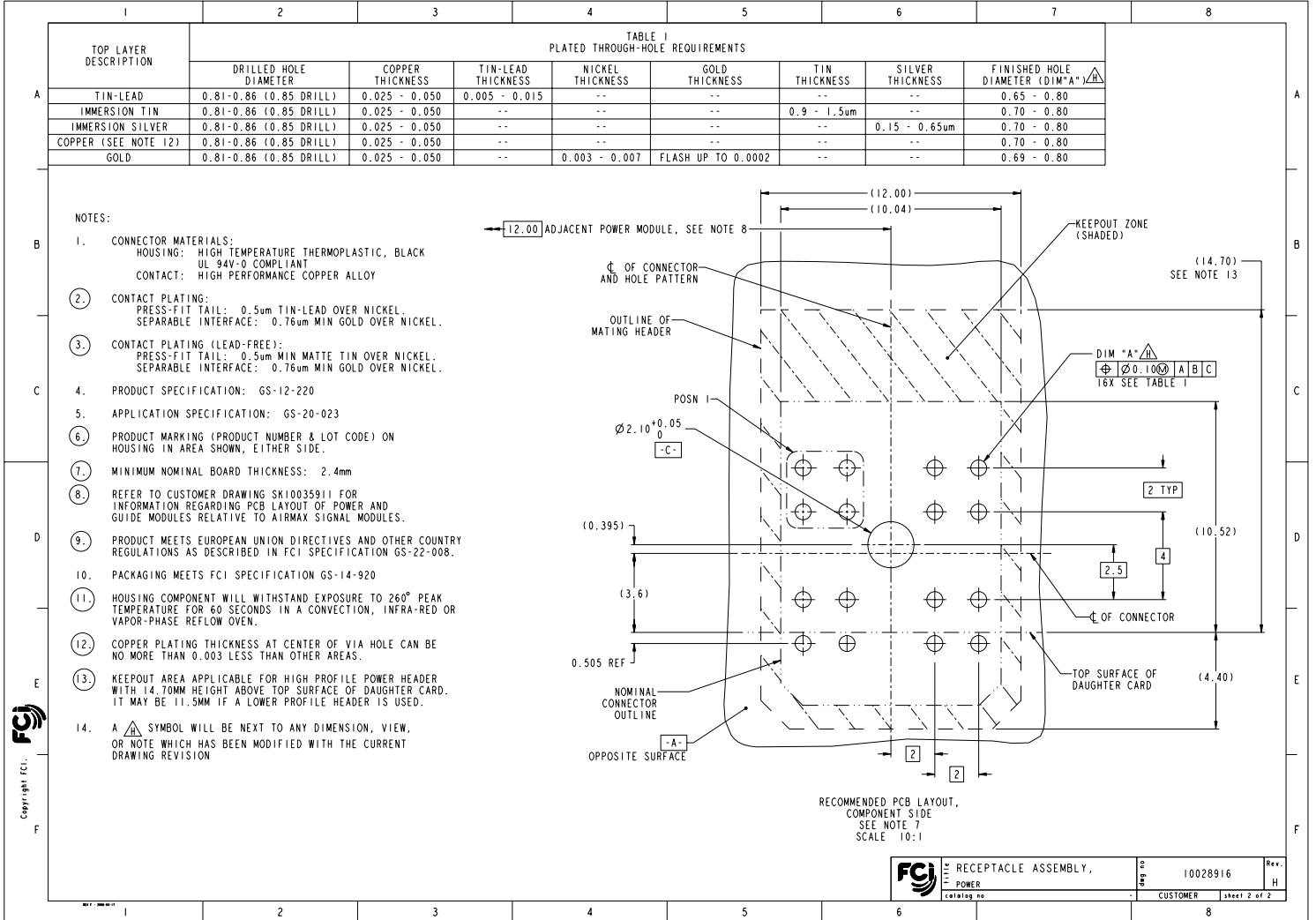


Copyright FCJ

**CONFIDENTIAL**

|                            |            |                                       |                |            |           |
|----------------------------|------------|---------------------------------------|----------------|------------|-----------|
| www.fciconnect.com         |            | surface 3.2                           | tolerance std  | projection | MM        |
|                            |            | ASME Y14.5                            | ASME Y14.5     | ASME Y14.5 | Scale     |
|                            |            | TOLERANCES UNLESS OTHERWISE SPECIFIED |                | size       | A2        |
| Dr. W. J. SWAIN            | 2003-05-22 | ANGULAR                               | 0.X            | 0.3        |           |
| Eng. ANDREW TONG           | 2010-05-11 | LINEAR                                | 0.XX           | 0.1        |           |
| Chr. C. H. TAN             | 2010-05-11 | Ø                                     | 0.XXX          | 0.05       | ECN       |
| Appr. JOEY NG              | 2010-05-11 | Product family                        | 2mm High Power | Spec ref   | GS-12-220 |
| RECEPTACLE ASSEMBLY, POWER |            | 10028916                              |                | Rev.       | H         |
| catalog no                 |            | CUSTOMER                              |                | sheet      | 1 of 2    |

PDM: Rev:H STATUS:Released Printed: Nov 30, 2010



|  |              |        |
|--|--------------|--------|
| <b>FCI</b> RECEPTACLE ASSEMBLY,<br>POWER<br>catalog no | REV 10028916 | Rev. H |
| CUSTOMER   | SHEET 2 OF 2 |        |