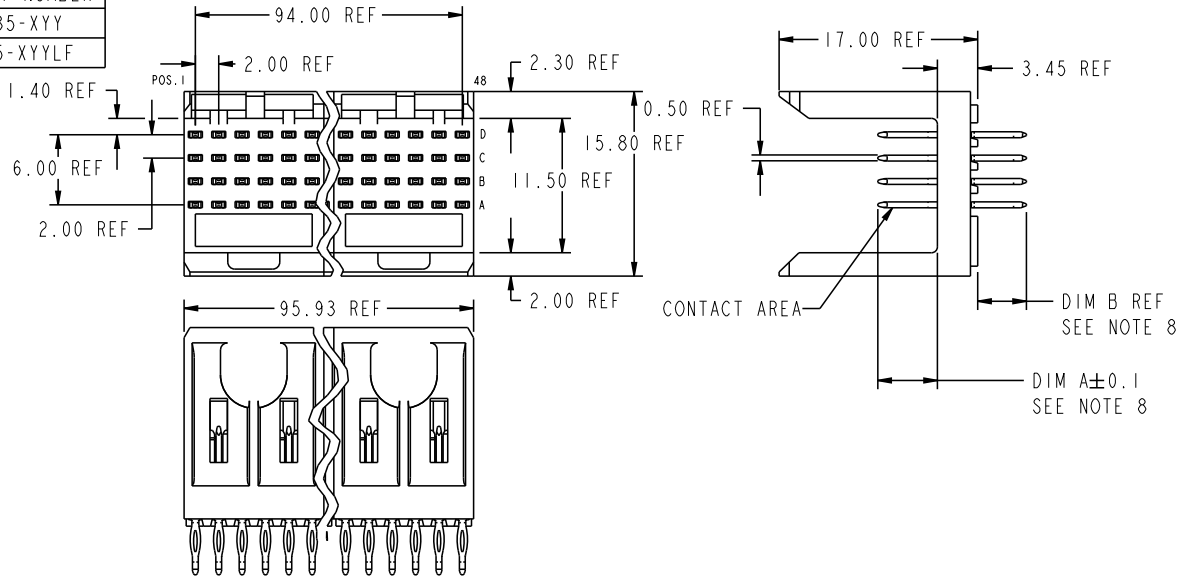


PRODUCT NUMBER
70235-XYX
70235-XYXLF



PLATING IN CONTACT AREA

DASH NUMBER	PERFORMANCE LEVEL	NOTES
-AYY	TELCORDIA CO	SEE NOTE 9
-MYX	.38µm GOLD MIN.	-
-NIYY	TELCORDIA CO (NXT)	-
-NSYY	TELCORDIA UE (NXT)	-
-IYY	TELCORDIA CO	-
-2YY	TELECOM CLASS	-
-3YY	IEC CLASS I	-
-5YY	TELCORDIA UE	-
-AYXLF	TELCORDIA CO	SEE NOTE 10
-NIYYLF	TELCORDIA CO (NXT) IEC CLASS I	SEE NOTE 10
-NSYYLF	TELCORDIA UE (NXT)	SEE NOTE 10
-IYYLF	TELCORDIA CO IEC CLASS I	SEE NOTE 10
-2YYLF	TELECOM CLASS	SEE NOTE 10
-5YYLF	TELCORDIA UE	SEE NOTE 10

mat'l code				tolerances unless otherwise specified		CUSTOMER	FCJ		
ltr	ecm no.	dr	date	linear	angular	COPY	www.fcjconnect.com		
AG	V06-0498	DCH	2006-05-31	0.xx ±0.13	0° ±2°	projection	title METRAL SIGNAL HEADER 8 MOD, 4 ROW PRESS-FIT		
AH	DG09-0256	TER	2009-08-19	.xxx ±.051		MM	product family METRAL code 213		
AC	V04-0554	TAB	06/07/04			scale 2:1	size dwg no 70235 sheet 1 of 21		
AD	V05-0079	HTB	02/03/05	dr	T.BRUNGARD	11/19/99			
AE	V05-0359	DAI	04/21/05	engr	M.STRAWER	11/19/99			
AF	V05-1030	LP	11/18/05	chr	M.STRAWER	11/19/99			
				oppd	M.STRAWER	02/29/00			
sheet index	revision sheet	AH	21						



This document is the property of and embodies CONFIDENTIAL and PROPRIETARY information of FCJ. No part of the information shown on this document may be used in any way or disclosed to others without the written consent of FCJ. Copyright FCJ.

REV E - 2006-04-18

Pro/E

PDM: Rev:AH

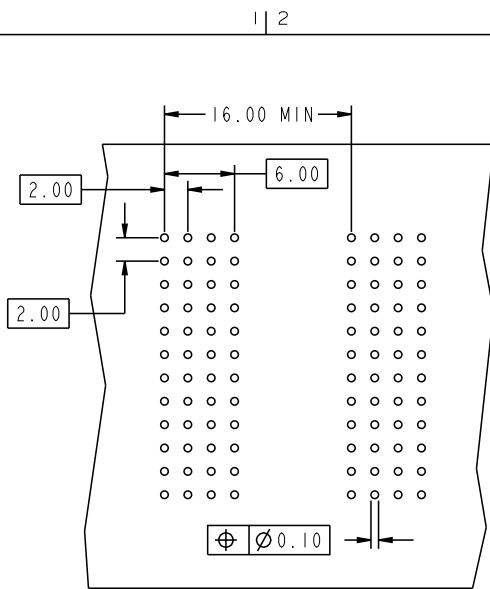
STATUS:Released

Printed: Feb 20, 2010

code code 22526



This document is the property of and embodies CONFIDENTIAL and PROPRIETARY information of FCJ. No part of the information shown on this document may be used in any way or disclosed to others without the written consent of FCJ. Copyright FCJ.



REQUIRED PC BOARD LAYOUT
COMPONENT SIDE

SEE PRINT 58351 FOR
ADDITIONAL PCB INFORMATION

KEY		
CODE	DIMENSIONS	
	DIM "A" MATE	DIM "B" TAIL
1	5.00	4.30
2	5.75	4.30
3	6.50	4.30
4	7.25	4.30
5	5.00	13.60
6	5.75	13.60
7	6.50	13.60
8	7.25	13.60
9	5.00	17.00
10	5.75	17.00
11	6.50	17.00
12	7.25	17.00
13	8.25	4.30
14	8.25	13.60
15	8.25	17.00
19	8.00	4.30
20	8.00	13.60
21	8.00	17.00

mat'l code				tolerances unless otherwise specified		CUSTOMER		FCJ	
lfr	ecm no.	dr	date	linear	0.X ±0.3	COPY		www.fcjconnect.com	
AH					0.XX ±0.13	projection	title METRAL SIGNAL HEADER		
				angles	.XXX ±.051			8 MOD, 4 ROW PRESS-FIT	
				dr	∠ ±2°			product family	METRAL
				engr	T.BRUNGARD 11/19/99	scale	A	size	dwg no
				chr	M.STRAWER 11/19/99	1:1		70235	
				oppd	M.STRAWER 02/29/00			code	213
sheet index	revision sheet							sheet	2

code code 22526

PDM: Rev:AH

STATUS:Released

Printed: Feb 20, 2010

1 | 2

3 |

4

PRODUCT NUMBER
70235-XYX
70235-XYXLF

NOTES:

1. FOR DIM A AND B SEE SHEET 2 AND UP.
2. BODY MATERIAL: LIQUID CRYSTAL
POLYMER 30 % GLASS.
FLAME RETARDANT ACC. UL 94-V0.
3. PIN MATERIAL:
PHOSPHOR BRONZE.
4. PLATING ON PRESS-FIT TAIL:
70235 -XYX IS SnPb
70235-XYXLF IS Sn (LEAD FREE)
PLATING ON CONTACT AREA CONFORMS TO PERFORMANCE LEVEL SHOWN IN TABLE.
5. PRODUCT MARKING:
PART NUMBER DESIGNATION & BATCH I.D.
6. ALL PRODUCTS WITH PART NUMBERS SHOWN IN SUBSEQUENT TABLES WILL BE PACKAGED IN TUBES. IF TRAY PACKAGING IS REQUIRED, A SUFFIX "P" WILL BE ADDED TO THE END OF THE PART NUMBER. EXAMPLE: XXXXX-XXXP OR XXXXX-XXXPLF
7. PRODUCT SPECIFICATION GS-12-180
APPLICATION SPECIFICATION BUS-20-073
- 8 AFTER INSERTION INTO CIRCUIT BOARD WITH QUALIFIED TOOL.
- 9 -A PLATING HAS Au FLASH IN PRESS FIT AREA (LEAD FREE).
- 10 THE PRODUCTS WHERE THE PART NUMBER ENDS IN LF MEET THE EUROPEAN UNION DIRECTIVES AND OTHER COUNTRY REGULATIONS AS DESCRIBED IN GS-22-008.
- 11 FOR LEAD FREE PART NUMBERS, ADD AN "LF" SUFFIX. EXAMPLE: 70235-X01LF
12. ALL PRODUCTS EXCEPT THOSE WITH PART NUMBERS CONTAINING (DRAWING NO.)-N1--- OR (DRAWING NO.)-N5---WILL WITHSTAND EXPOSURE TO 260°C FOR 60 SECONDS IN A CONVECTION, INFRA-RED OR VAPOR PHASE REFLOW OVEN. PART NUMBERS (DRAWING NO.)-N1--- AND (DRAWINGS NO.)-N5---WILL NOT WITHSTAND REFLOW AND Au CONTACT SURFACE OF THE CONTACTS SHALL BE EXPOSED TO A MAXIMUM 140°C FOR NO LONGER THAN 15 SECONDS IN A WAVE SOLDER APPLICATION.

mat'l code		--		tolerances unless otherwise specified		CUSTOMER		FCJ		www.fciconnect.com	
ltr	ecn no.	dr	date	linear	0, X ±0,3	projection	COPY		title METRAL SIGNAL HEADER		
AH					0, XX ±0,13				8 MOD, 4 ROW PRESS-FIT		
				angles	.XXX ±.051		product family		METRAL code		
				dr	T. BRUNGARD 11/19/99	scale	size		213		
				eng	M. STRAWSER 11/19/99	1:1	dwg no		sheet		
				chr	M. STRAWSER 11/19/99		70235		21		
				oppd	M. STRAWSER 02/29/00		A				
sheet index	revision sheet										

1 | 2

3 |

4

Pro/E

code code 22526

PDM: Rev:AH STATUS:Released Printed: Feb 20, 2010



This document is the property of and embodies CONFIDENTIAL and PROPRIETARY information of FCJ. No part of the information shown on this document may be used in any way or disclosed to others without the written consent of FCJ. Copyright FCJ.

REV E - 2006-04-18