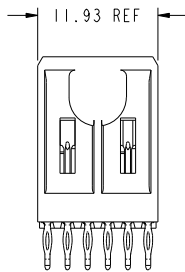
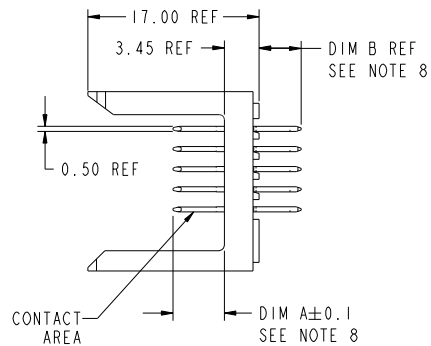
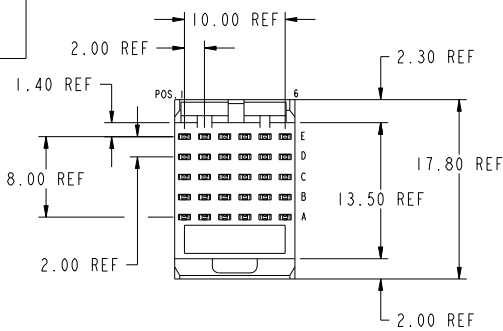


PRODUCT NUMBER
85674-XYX OR 85674-XYXX
85674-XYXLF OR 85674-XYXXLF



This document is the property of, and embodies CONFIDENTIAL and PROPRIETARY information of FCI. No part of the information shown on this document may be used in any way or disclosed to others without the written consent of FCI. Copyright FCI.

mat'l code		SEE NOTES		tolerances unless otherwise specified		CUSTOMER		www.fciconnect.com	
itr	ecn no.	dr	date	linear	0.X ±0.3	projection	COPY	title	METRAL SIGNAL HEADER
CC	V06-0569	DCH	2006-06-12		0.XX ±0.13			1 MOD, 5 ROW PRESS-FIT	
CD	DG07-0409	Cenh	10/18/07	angles	.XXX ±.051			product family	METRAL
CE	DG07-0487	Cenh	12/04/07		0 ±.2			size	213
CF	DG08-0248	Cenh	09/26/08	dr	I.BRINGARD 11/19/99			dwg no	85674
CG	DG08-0303	Cenh	10/30/08	eng	M.STRAMSER 11/19/99			code	1 of 10
CH	DG09-0073	Cenh	03/05/09	chr	M.STRAMSER 11/19/99	scale	2:1		
-	-	-	-	appd	M.STRAMSER 02/29/00				
sheet	revision	CH	CH	CH	CH	CH	CH	CH	CH
index	sheet	1	2	3	4	5	6	7	8

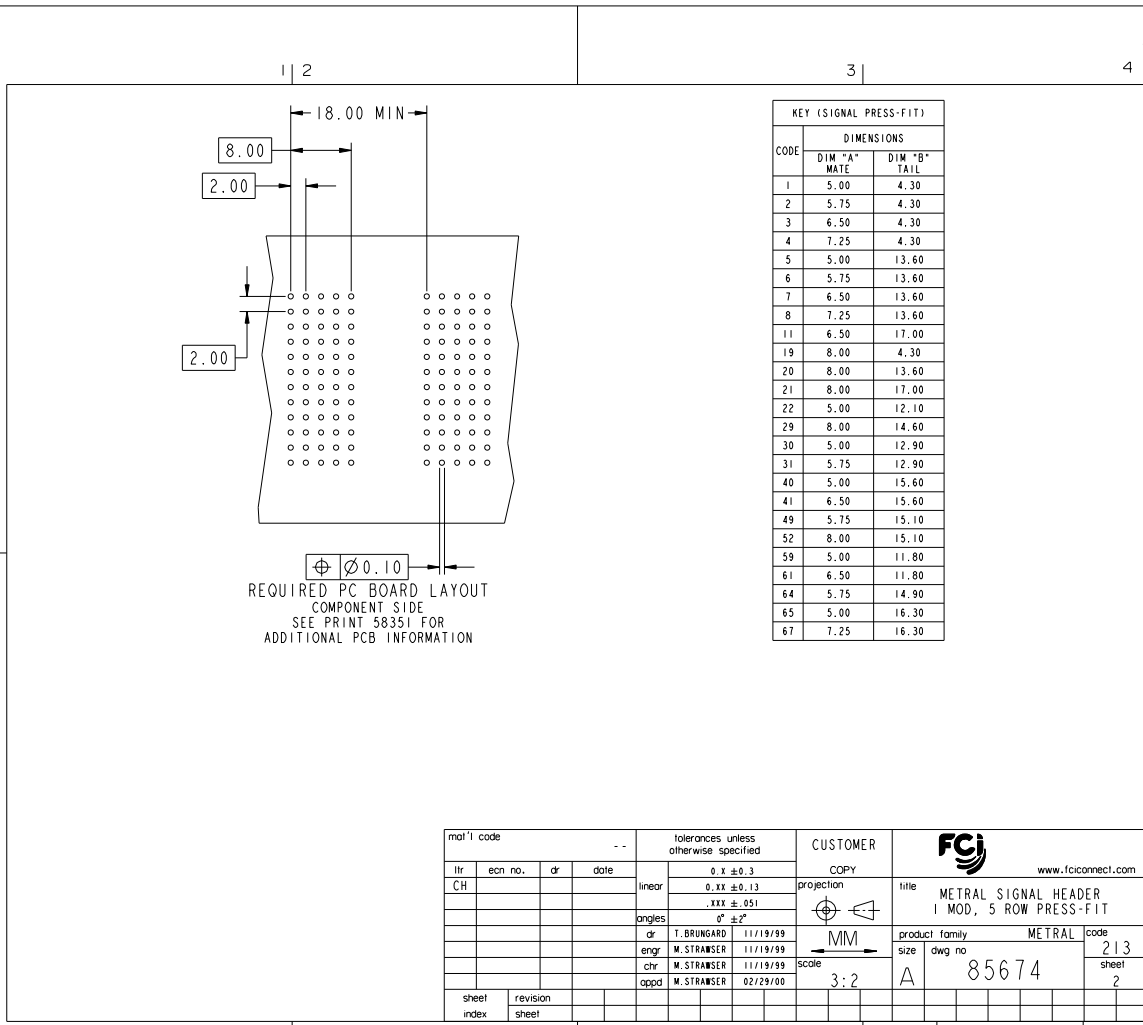
Pro/E

cage code 22526



This document is the property of, and embodies CONFIDENTIAL and PROPRIETARY information of FCI. No part of the information shown on this document may be used in any way or published or transmitted in any form or by any means without the written consent of FCI. Copyright FCI.

REV: 2008-04-08



mat'l code		--		tolerances unless otherwise specified		CUSTOMER		www.fciconnect.com	
itr	ecm no.	dr	date	linear	0.X ±0.3	projection	title		
CH					0.XX ±0.13	⊕	METRAL SIGNAL HEADER		
				angles	.XXX ±.051	MM	I MOD, 5 ROW PRESS-FIT		
				dr	0° ±2°	3:2	product family	METRAL	
				eng	I.BRINGARD 11/19/99	scale	size	dwg no	code
				chr	M.STRAMSER 11/19/99		A	85674	213
				appd	M.STRAMSER 02/29/00				sheet
sheet index	revision sheet								2

Pro/E 3 cage code 22526 4



This document is the property of, and embodies CONFIDENTIAL and PROPRIETARY information of FCI. No part of the information shown on this document may be used in any way or disclosed to others without the written consent of FCI. Copyright FCI.

METRAL P/N	ROW	CONTACT MOD.	CODE	1	2	3	4	5	6
85674-X01	E	1	1	1	1	1	1	1	1
	D	1	1	1	1	1	1	1	1
	C	1	1	2	2	2	2	2	2
85674-X01LF	B	1	1	1	1	1	1	1	1
	A	1	1	1	1	1	1	1	1

METRAL P/N	ROW	CONTACT MOD.	CODE	1	2	3	4	5	6
85674-X02	E	5	5	5	5	5	5	5	5
	D	5	5	5	5	5	5	5	5
	C	5	5	6	6	6	6	6	6
85674-X02LF	B	5	5	5	5	5	5	5	5
	A	5	5	5	5	5	5	5	5

METRAL P/N	ROW	CONTACT MOD.	CODE	1	2	3	4	5	6
85674-X03	E	1	1	1	1	1	1	1	1
	D	1	1	1	1	1	1	1	1
	C	4	4	4	4	4	4	4	4
85674-X03LF	B	1	1	1	1	1	1	1	1
	A	1	1	1	1	1	1	1	1

METRAL P/N	ROW	CONTACT MOD.	CODE	1	2	3	4	5	6
85674-X04	E	1	1	1	1	1	1	1	1
	D	1	1	1	1	1	1	1	1
	C	8	8	8	8	8	8	8	8
85674-X04LF	B	1	1	1	1	1	1	1	1
	A	1	1	1	1	1	1	1	1

METRAL P/N	ROW	CONTACT MOD.	CODE	1	2	3	4	5	6
85674-X05	E	8	8	8	8	8	8	8	8
	D	8	8	8	8	8	8	8	8
	C	8	8	8	8	8	8	8	8
85674-X05LF	B	5	5	5	5	5	5	5	5
	A	5	5	5	5	5	5	5	5

METRAL P/N	ROW	CONTACT MOD.	CODE	1	2	3	4	5	6
85674-X06	E	5	5	5	5	5	5	5	5
	D	5	5	5	5	5	5	5	5
	C	5	5	5	5	5	5	5	5
85674-X06LF	B	5	5	5	8	8	8	8	8
	A	5	5	5	8	8	8	8	8

METRAL P/N	ROW	CONTACT MOD.	CODE	1	2	3	4	5	6
85674-X07	E	5	5	5	5	5	5	5	5
	D	5	5	5	5	5	5	5	5
	C	8	8	8	8	8	8	8	8
85674-X07LF	B	5	5	5	5	5	5	5	5
	A	5	5	5	5	5	5	5	5

METRAL P/N	ROW	CONTACT MOD.	CODE	1	2	3	4	5	6
85674-X08	E	8	8	8	8	8	8	8	8
	D	8	8	8	8	8	8	8	8
	C	8	8	8	8	8	8	8	8
85674-X08LF	B	8	8	8	8	8	8	8	8
	A	8	8	8	8	8	8	8	8

METRAL P/N	ROW	CONTACT MOD.	CODE	1	2	3	4	5	6
85674-X09	E	5	5	5	5	5	5	5	5
	D	5	5	5	5	5	5	5	5
	C	5	5	5	5	5	5	5	5
85674-X09LF	B	5	5	5	5	8	8	8	8
	A	5	5	5	5	8	8	8	8

METRAL P/N	ROW	CONTACT MOD.	CODE	1	2	3	4	5	6
85674-X10	E	2	2	2	2	2	2	2	2
	D	2	2	2	2	2	2	2	2
	C	2	2	2	2	2	2	2	2
85674-X10LF	B	2	-	-	-	-	-	-	-
	A	2	-	-	-	-	-	-	-

METRAL P/N	ROW	CONTACT MOD.	CODE	1	2	3	4	5	6
85674-X11	E	6	6	6	6	20	20	20	20
	D	6	6	6	6	20	20	20	20
	C	6	6	6	6	20	20	20	20
85674-X11LF	B	6	6	6	6	20	20	20	20
	A	6	6	6	6	20	20	20	20

METRAL P/N	ROW	CONTACT MOD.	CODE	1	2	3	4	5	6
85674-X12	E	3	2	2	2	2	2	2	2
	D	3	2	2	2	2	2	2	2
	C	3	2	2	2	2	2	2	2
85674-X12LF	B	3	2	2	2	2	2	2	2
	A	3	2	2	2	2	2	2	2

METRAL P/N	ROW	CONTACT MOD.	CODE	1	2	3	4	5	6
85674-X13	E	1	1	-	1	1	1	1	1
	D	1	1	-	1	1	1	1	1
	C	1	1	-	-	-	-	-	-
85674-X13LF	B	1	1	-	1	1	1	1	1
	A	1	1	-	1	1	1	1	1

METRAL P/N	ROW	CONTACT MOD.	CODE	1	2	3	4	5	6
85674-X14	E	2	2	49	49	49	49	49	49
	D	2	2	49	49	49	49	49	49
	C	2	2	49	49	49	49	49	49
85674-X14LF	B	2	2	49	49	49	49	49	49
	A	2	2	49	49	49	49	49	49

METRAL P/N	ROW	CONTACT MOD.	CODE	1	2	3	4	5	6
85674-X15	E	49	49	49	49	2	2	2	2
	D	49	49	49	49	2	2	2	2
	C	49	49	49	49	2	2	2	2
85674-X15LF	B	49	49	49	49	2	2	2	2
	A	49	49	49	49	2	2	2	2

METRAL P/N	ROW	CONTACT MOD.	CODE	1	2	3	4	5	6
85674-X16	E	2	2	2	2	2	2	2	2
	D	1	3	2	3	2	3	2	3
	C	1	3	2	3	2	3	2	3
85674-X16LF	B	1	3	2	3	2	3	2	3
	A	1	3	2	3	2	3	2	3

METRAL P/N	ROW	CONTACT MOD.	CODE	1	2	3	4	5	6
85674-X17	E	22	22	22	22	22	22	22	22
	D	22	22	22	31	22	22	22	22
	C	22	22	22	22	22	22	22	22
85674-X17LF	B	22	22	22	22	22	22	22	22
	A	22	22	22	22	7	22	22	22

METRAL P/N	ROW	CONTACT MOD.	CODE	1	2	3	4	5	6
85674-X18	E	7	7	7	7	7	7	7	7
	D	7	7	7	7	7	7	7	7
	C	7	7	7	7	7	7	7	7
85674-X18LF	B	7	7	7	7	7	7	7	7
	A	7	7	7	7	7	7	7	7

METRAL P/N	ROW	CONTACT MOD.	CODE	1	2	3	4	5	6
85674-X19	E	3	3	3	3	3	3	3	3
	D	3	3	3	3	3	3	3	3
	C	3	3	3	3	3	3	3	3
85674-X19LF	B	3	3	3	3	3	3	3	3
	A	3	3	3	3	3	3	3	3

METRAL P/N	ROW	CONTACT MOD.	CODE	1	2	3	4	5	6
85674-X21	E	19	2	4	4	2	4	2	4
	D	19	2	4	4	2	4	2	4
	C	19	2	4	4	2	4	2	4
85674-X21LF	B	19	2	4	4	2	4	2	4
	A	19	2	4	4	2	4	2	4

METRAL P/N	ROW	CONTACT MOD.	CODE	1	2	3	4	5	6
85674-X22	E	7	7	7	7	7	7	7	7
	D	7	7	7	7	7	7	7	7
	C	7	7	7	7	7	7	7	7
85674-X22LF	B	7	7	7	7	7	7	7	7
	A	7	7	7	7	7	7	7	7

METRAL P/N	ROW	CONTACT MOD.	CODE	1	2	3	4	5	6
85674-X23	E	7	7	7	7	7	7	7	7
	D	7	7	7	7	7	7	7	7
	C	7	7	7	7	7	7	7	7
85674-X23LF	B	7	7	7	7	7	7	7	7
	A	7	7	7	7	7	7	7	7

METRAL P/N	ROW	CONTACT MOD.	CODE	1	2	3	4	5	6
85674-X24	E	52	2	2	2	2	2	2	2
	D	52	7	22	7	7	7	7	7
	C	52	7	7	7	7	7	7	7
85674-X24LF	B	52	7	7	7	7	7	7	7
	A	52	7	7	7	7	7	7	7

mat'l code		--		tolerances unless otherwise specified		CUSTOMER		FCI		www.fciconnect.com	
thr	ecn no.	dr	date	linear	0.X ±0.3	projection	COPY	title	METRAL SIGNAL HEADER		
CH				angles	0.XX ±0.13	MM		I MOD, 5 ROW PRESS-FIT		product family	code</



This document is the property of, and embodies
 CONFIDENTIAL and PROPRIETARY information of FCI.
 No part of the information shown on this
 document may be used in any way or
 transmitted in any form without the written consent of FCI.
 Copyright FCI.

REV: 2008-04-10

METRAL P/N	ROW	CONTACT MOD.	CODE	1	2	3	4	5	6
85674-X25	E	2	2	2	2	2	2	2	2
	D	2	2	2	2	2	2	2	2
	C	2	2	2	2	2	2	2	2
85674-X25LF	B	2	-	-	-	-	-	-	2
	A	2	-	2	2	-	-	-	2

METRAL P/N	ROW	CONTACT MOD.	CODE	1	2	3	4	5	6
85674-X26	E	2	2	2	6	6	6	6	6
	D	2	2	2	6	6	6	6	6
	C	2	2	2	6	6	6	6	6
85674-X26LF	B	2	2	2	6	6	6	6	6
	A	2	2	2	6	6	6	6	6

METRAL P/N	ROW	CONTACT MOD.	CODE	1	2	3	4	5	6
85674-X27	E	2	2	6	6	6	6	2	2
	D	2	2	6	6	6	6	2	2
	C	2	2	6	6	6	6	2	2
85674-X27LF	B	2	2	6	6	6	6	2	2
	A	2	2	6	6	6	6	2	2

METRAL P/N	ROW	CONTACT MOD.	CODE	1	2	3	4	5	6
85674-X28	E	3	3	3	3	3	3	3	3
	D	1	1	1	1	1	1	1	1
	C	1	1	1	1	1	1	1	1
85674-X28LF	B	1	1	1	1	1	1	1	1
	A	1	1	1	1	1	1	1	1

METRAL P/N	ROW	CONTACT MOD.	CODE	1	2	3	4	5	6
85674-X29	E	3	3	3	3	1	3		
	D	3	3	3	3	3	3		
	C	3	3	3	3	3	3		
85674-X29LF	B	3	3	3	3	3	3		
	A	3	3	3	3	3	3		

METRAL P/N	ROW	CONTACT MOD.	CODE	1	2	3	4	5	6
85674-X30	E	7	7	7	7	5	7		
	D	7	7	7	7	7	7		
	C	7	7	7	7	7	7		
85674-X30LF	B	7	7	7	7	7	7		
	A	7	7	7	7	7	7		

METRAL P/N	ROW	CONTACT MOD.	CODE	1	2	3	4	5	6
85674-X31	E	4	2	2	2	2	2	2	2
	D	4	2	2	2	2	2	2	2
	C	4	2	2	2	2	2	2	2
85674-X31LF	B	4	2	2	2	2	2	2	2
	A	4	2	2	2	2	2	2	2

METRAL P/N	ROW	CONTACT MOD.	CODE	1	2	3	4	5	6
85674-X32	E	2	2	2	2	2	2	2	2
	D	2	2	2	2	2	2	2	2
	C	2	2	4	4	2	2	2	2
85674-X32LF	B	2	2	2	2	2	2	2	2
	A	2	2	2	2	2	2	2	2

METRAL P/N	ROW	CONTACT MOD.	CODE	1	2	3	4	5	6
85674-X33	E	2	2	2	2	2	2	2	2
	D	2	2	2	2	2	2	2	2
	C	2	2	4	4	2	2	2	2
85674-X33LF	B	2	2	2	2	2	2	2	2
	A	2	2	4	4	2	2	2	2

METRAL P/N	ROW	CONTACT MOD.	CODE	1	2	3	4	5	6
85674-X34	E	2	2	2	2	2	2	2	2
	D	2	2	2	2	2	2	2	2
	C	2	2	2	2	2	2	2	2
85674-X34LF	B	2	2	2	2	2	2	2	4
	A	2	2	2	2	2	2	2	4

METRAL P/N	ROW	CONTACT MOD.	CODE	1	2	3	4	5	6
85674-X35	E	2	2	4	2	2	2	2	2
	D	2	2	2	2	2	2	2	2
	C	2	2	2	2	2	2	2	2
85674-X35LF	B	2	2	2	2	2	2	2	2
	A	2	2	2	2	2	2	2	2

METRAL P/N	ROW	CONTACT MOD.	CODE	1	2	3	4	5	6
85674-X36	E	2	2	4	4	2	2	2	2
	D	2	2	2	2	2	2	2	2
	C	2	2	4	4	2	2	2	2
85674-X36LF	B	2	2	2	2	2	2	2	2
	A	2	2	2	2	2	2	2	2

METRAL P/N	ROW	CONTACT MOD.	CODE	1	2	3	4	5	6
85674-X37	E	2	2	2	2	2	2	4	4
	D	2	2	2	2	2	2	4	4
	C	2	2	2	2	2	2	4	4
85674-X37LF	B	2	2	2	2	2	2	4	4
	A	2	2	2	2	2	2	4	4

METRAL P/N	ROW	CONTACT MOD.	CODE	1	2	3	4	5	6
85674-X38	E	2	2	2	2	2	2	4	4
	D	2	2	2	2	2	2	4	4
	C	2	2	2	2	2	2	4	4
85674-X38LF	B	2	2	2	2	2	2	4	4
	A	2	2	2	2	2	2	4	4

METRAL P/N	ROW	CONTACT MOD.	CODE	1	2	3	4	5	6
85674-X39	E	6	6	6	6	6	8		
	D	6	6	6	6	6	8		
	C	6	6	6	6	6	6		
85674-X39LF	B	6	6	6	6	6	6		
	A	6	6	6	6	6	6		

METRAL P/N	ROW	CONTACT MOD.	CODE	1	2	3	4	5	6
85674-X40	E	1	1	1	1	1	1	1	1
	D	2	2	2	2	2	2	2	2
	C	2	2	2	1	1	1	1	1
85674-X40LF	B	2	1	1	1	1	1	1	1
	A	1	1	1	1	1	1	1	1

METRAL P/N	ROW	CONTACT MOD.	CODE	1	2	3	4	5	6
85674-X41	E	1	1	1	1	2	3		
	D	2	2	2	1	1	3		
	C	2	2	2	2	2	3		
85674-X41LF	B	2	2	2	2	2	3		
	A	2	2	1	1	1	3		

METRAL P/N	ROW	CONTACT MOD.	CODE	1	2	3	4	5	6
85674-X42	E	2	2	2	2	2	2	2	2
	D	2	2	2	2	2	2	2	2
	C	2	2	2	2	2	2	2	2
85674-X42LF	B	2	2	2	2	1	2		
	A	2	2	2	2	2	2		

METRAL P/N	ROW	CONTACT MOD.	CODE	1	2	3	4	5	6
85674-X43	E	5	5	5	5	5	5		
	D	6	6	6	6	6	6		
	C	6	6	6	5	5	5		
85674-X43LF	B	6	5	5	5	5	5		
	A	5	5	5	5	5	5		

METRAL P/N	ROW	CONTACT MOD.	CODE	1	2	3	4	5	6
85674-X45	E	3	3	3	3	2	3		
	D	3	3	3	3	3	3		
	C	3	3	3	3	3	3		
85674-X45LF	B	3	3	3	3	3	3		
	A	3	3	3	3	3	3		

METRAL P/N	ROW	CONTACT MOD.	CODE	1	2	3	4	5	6
85674-X46	E	5	7	7	7	7	7		
	D	7	7	7	7	7	7		
	C	7	7	7	7	7	7		
85674-X46LF	B	7	7	7	7	7	7		
	A	7	7	7	7	7	7		

METRAL P/N	ROW	CONTACT MOD.	CODE	1	2	3	4	5	6
85674-X47	E	7	7	7	7	7	7		
	D	7	4	7	7	7	7		
	C	4	7	4	7	7	7		
85674-X47LF	B	7	7	4	7	7	7		
	A	7	7	7	6	7	7		

METRAL P/N	ROW	CONTACT MOD.	CODE	1	2	3	4	5	6
85674-X28	E	3	3	3	3	3	3		
	D	1	1	1	1	1	1		
	C	1	1	1	1	1	1		
85674-X28LF	B	1	1	1	1	1	1		
	A	1	1	1	1	1	1		

METRAL P/N	ROW	CONTACT MOD.	CODE	1	2	3	4	5	6
85674-X29	E	3	3	3	3	1	3		
	D	3	3	3	3	3	3		
	C	3	3	3	3	3	3		
85674-X29LF	B	3	3	3	3	3	3		
	A	3	3	3	3	3	3		



This document is the property of, and embodies CONFIDENTIAL and PROPRIETARY information of FCJ. No part of the information shown on this document may be used in any way or disclosed to others without the written consent of FCJ. Copyright FCJ.

REV: 2008-04-08

METRAL P/N	ROW	CONTACT MOD.	CODE	1	2	3	4	5	6
85674-X49	E	3	3	3	3	3	3	3	3
	D	3	3	3	3	3	3	3	3
	C	-	-	3	3	3	3	3	3
85674-X49LF	B	-	-	-	-	3	3	3	3
	A	3	3	-	-	3	3	3	3

METRAL P/N	ROW	CONTACT MOD.	CODE	1	2	3	4	5	6
85674-X50	E	3	3	3	3	3	3	3	3
	D	3	3	1	9	3	3	3	3
	C	3	3	1	9	3	3	3	3
85674-X50LF	B	3	3	3	3	3	3	3	3
	A	3	3	3	3	3	3	3	3

METRAL P/N	ROW	CONTACT MOD.	CODE	1	2	3	4	5	6
85674-X51	E	5	5	5	5	5	5	5	5
	D	6	6	6	6	6	6	6	6
	C	6	6	6	6	5	5	5	5
85674-X51LF	B	6	5	5	5	5	5	5	5
	A	5	5	5	5	5	5	5	5

METRAL P/N	ROW	CONTACT MOD.	CODE	1	2	3	4	5	6
85674-X52	E	1	1	1	1	1	1	1	1
	D	1	1	1	1	1	1	1	1
	C	3	1	1	1	1	3		
85674-X52LF	B	1	1	1	1	1	1	1	1
	A	1	1	1	1	1	1	1	1

METRAL P/N	ROW	CONTACT MOD.	CODE	1	2	3	4	5	6
85674-X53	E	3	3	3	3	3	3	3	3
	D	2	2	2	2	3	3	3	3
	C	2	2	2	1	1	1	1	1
85674-X53LF	B	2	2	2	1	1	1	1	1
	A	3	2	3	1	1	1	1	1

METRAL P/N	ROW	CONTACT MOD.	CODE	1	2	3	4	5	6
85674-X54	E	2	2	2	2	2	2	2	2
	D	2	2	1	1	1	1	3	
	C	2	2	1	1	1	1	3	
85674-X54LF	B	2	2	1	1	1	1	3	
	A	3	2	1	1	1	1	3	

METRAL P/N	ROW	CONTACT MOD.	CODE	1	2	3	4	5	6
85674-X55	E	1	3	1	1	1	1	1	1
	D	1	3	1	1	1	1	1	1
	C	1	3	1	1	1	1	1	1
85674-X55LF	B	1	3	1	1	1	1	1	1
	A	1	3	1	1	1	1	1	1

METRAL P/N	ROW	CONTACT MOD.	CODE	1	2	3	4	5	6
85674-X56	E	5	6	6	6	6	6	6	6
	D	5	6	6	6	6	6	6	6
	C	5	6	6	6	6	6	6	6
85674-X56LF	B	5	6	6	6	6	6	6	6
	A	5	6	6	6	6	6	6	6

METRAL P/N	ROW	CONTACT MOD.	CODE	1	2	3	4	5	6
85674-X57	E	5	6	6	6	6	6	6	6
	D	5	6	6	6	6	6	6	6
	C	5	6	6	6	6	6	6	6
85674-X57LF	B	6	6	6	6	6	6	6	6
	A	6	6	6	6	6	6	6	6

METRAL P/N	ROW	CONTACT MOD.	CODE	1	2	3	4	5	6
85674-X58	E	1	2	2	2	2	2	2	2
	D	1	2	2	2	2	2	2	2
	C	1	2	2	2	2	2	2	2
85674-X58LF	B	2	2	2	2	2	2	2	2
	A	2	2	2	2	2	2	2	2

METRAL P/N	ROW	CONTACT MOD.	CODE	1	2	3	4	5	6
85674-X59	E	3	3	3	1	3	3	3	3
	D	3	3	1	9	3	3	3	3
	C	1	9	3	1	3	3	3	3
85674-X59LF	B	3	1	9	3	3	3	3	3
	A	3	3	3	3	3	3	3	3

METRAL P/N	ROW	CONTACT MOD.	CODE	1	2	3	4	5	6
85674-X60	E	-	1	1	1	1	1	1	1
	D	-	1	1	1	1	1	1	1
	C	-	1	1	1	1	1	1	1
85674-X60LF	B	-	1	1	1	1	1	1	1
	A	-	1	1	1	1	1	1	1

METRAL P/N	ROW	CONTACT MOD.	CODE	1	2	3	4	5	6
85674-X61	E	3	1	9	3	3	3	3	3
	D	3	1	9	3	3	3	3	3
	C	3	1	9	3	3	3	3	3
85674-X61LF	B	3	1	9	3	3	3	3	3
	A	3	1	9	3	3	3	3	3

METRAL P/N	ROW	CONTACT MOD.	CODE	1	2	3	4	5	6
85674-X62	E	2	2	2	1	2	2	2	2
	D	2	2	2	1	2	2	2	2
	C	2	2	2	1	2	2	2	2
85674-X62LF	B	2	2	2	1	2	2	2	2
	A	2	2	2	1	2	2	2	2

METRAL P/N	ROW	CONTACT MOD.	CODE	1	2	3	4	5	6
85674-X63	E	2	2	2	2	1	1	1	1
	D	2	2	2	2	1	1	1	1
	C	1	2	2	2	1	1	1	1
85674-X63LF	B	2	2	2	2	1	1	1	1
	A	1	2	2	1	1	1	1	1

METRAL P/N	ROW	CONTACT MOD.	CODE	1	2	3	4	5	6
85674-X64	E	2	1	2	2	1	1	1	1
	D	2	2	2	2	1	1	1	1
	C	2	2	1	1	1	1	1	1
85674-X64LF	B	2	2	2	2	1	1	1	1
	A	2	2	1	1	1	1	1	1

METRAL P/N	ROW	CONTACT MOD.	CODE	1	2	3	4	5	6
85674-X65	E	3	3	3	3	3	3	3	3
	D	3	3	3	3	3	3	3	3
	C	3	3	3	3	3	3	3	3
85674-X65LF	B	3	3	3	3	3	3	3	3
	A	3	3	3	3	3	3	3	3

METRAL P/N	ROW	CONTACT MOD.	CODE	1	2	3	4	5	6
85674-X66	E	2	2	2	2	2	2	2	2
	D	2	2	2	2	1	2	2	2
	C	2	2	2	2	2	2	2	2
85674-X66LF	B	2	2	2	2	2	2	2	2
	A	2	2	2	2	2	2	2	2

METRAL P/N	ROW	CONTACT MOD.	CODE	1	2	3	4	5	6
85674-X67	E	2	2	2	2	2	2	2	2
	D	2	1	2	2	1	2	2	2
	C	2	2	2	2	2	2	2	2
85674-X67LF	B	2	2	2	2	2	2	2	2
	A	2	2	2	2	2	2	2	2

METRAL P/N	ROW	CONTACT MOD.	CODE	1	2	3	4	5	6
85674-X68	E	7	7	7	7	8	8	8	8
	D	7	7	7	7	8	8	8	8
	C	7	7	7	7	8	8	8	8
85674-X68LF	B	7	7	7	7	8	8	8	8
	A	7	7	7	7	8	8	8	8

METRAL P/N	ROW	CONTACT MOD.	CODE	1	2	3	4	5	6
85674-X69	E	6	6	6	6	6	6	6	6
	D	6	6	6	6	6	6	6	6
	C	6	6	6	6	6	6	6	6
85674-X69LF	B	6	6	6	6	6	6	6	6
	A	6	6	6	6	6	6	6	6

METRAL P/N	ROW	CONTACT MOD.	CODE	1	2	3	4	5	6
85674-X70	E	1	9	2	4	4	2	1	9
	D	1	9	2	4	4	2	1	9
	C	1	9	2	4	4	2	1	9
85674-X70LF	B	1	9	2	4	4	2	1	9
	A	1	9	2	4	4	2	1	9

METRAL P/N	ROW	CONTACT MOD.	CODE	1	2	3	4	5	6
85674-X71	E	2	2	2	2	2	1	9	
	D	2	2	2	2	2	1	9	
	C	2	2	2	2	2	1	9	
85674-X71LF	B	2	2	2	2	2	1	9	
	A	2	2	2	2	2	1	9	

METRAL P/N	ROW	CONTACT MOD.	CODE	1	2	3	4	5	6
85674-X72	E	6	6	6	6	6	6	6	6
	D	6	6	6	6	6	6	6	6
	C	2	0	6	6	6	6	6	6
85674-X72LF	B								



This document is the property of, and embodies
 CONFIDENTIAL and PROPRIETARY information of FCI.
 No part of the information shown on this
 document may be used in any way or
 transmitted in any form or by any means
 without the written consent of FCI.
 Copyright FCI.

METRAL P/N	ROW	CONTACT CODE	MOD.	1	2	3	4	5	6
85674-X73	E	20	6	8	8	6	20		
	D	20	6	8	8	6	20		
	C	20	6	8	8	6	20		
85674-X73LF	B	20	6	8	8	6	20		
	A	20	6	8	8	6	20		

METRAL P/N	ROW	CONTACT CODE	MOD.	1	2	3	4	5	6
85674-X74	E	2	2	2	2	2	1		
	D	2	2	2	2	2	2		
	C	2	2	2	2	2	2		
85674-X74LF	B	2	2	2	2	1	2		
	A	2	2	2	2	1	2		

METRAL P/N	ROW	CONTACT CODE	MOD.	1	2	3	4	5	6
85674-X75	E	2	2	2	3	3			
	D	2	2	2	3	3			
	C	2	2	2	3	3			
85674-X75LF	B	2	2	2	3	3			
	A	2	2	2	3	3			

METRAL P/N	ROW	CONTACT CODE	MOD.	1	2	3	4	5	6
85674-X76	E	2	2	2	3	3			
	D	2	2	2	3	3			
	C	2	2	2	3	3			
85674-X76LF	B	2	2	2	3	3			
	A	2	2	2	3	3			

METRAL P/N	ROW	CONTACT CODE	MOD.	1	2	3	4	5	6
85674-X77	E	3	3	3	2	2	2		
	D	3	3	3	2	2	2		
	C	3	3	3	2	2	2		
85674-X77LF	B	3	3	3	2	2	2		
	A	3	3	3	2	2	2		

METRAL P/N	ROW	CONTACT CODE	MOD.	1	2	3	4	5	6
85674-X78	E	3	4	2	2	2	3		
	D	3	4	2	2	2	3		
	C	3	4	2	2	2	3		
85674-X78LF	B	3	4	2	2	2	3		
	A	3	4	2	2	2	3		

METRAL P/N	ROW	CONTACT CODE	MOD.	1	2	3	4	5	6
85674-X79	E	3	2	2	2	2	2		
	D	3	2	2	2	2	2		
	C	3	2	2	2	2	2		
85674-X79LF	B	3	2	2	2	2	2		
	A	3	2	2	2	2	2		

METRAL P/N	ROW	CONTACT CODE	MOD.	1	2	3	4	5	6
85674-X80	E	2	2	1	3	3			
	D	2	2	3	3	3			
	C	2	2	3	3	3			
85674-X80LF	B	1	2	3	3	3			
	A	1	2	3	3	3			

METRAL P/N	ROW	CONTACT CODE	MOD.	1	2	3	4	5	6
85674-X81	E	2	2	3	3	3	4		
	D	2	2	3	3	3	4		
	C	2	2	3	3	3	4		
85674-X81LF	B	2	2	3	3	3	4		
	A	2	2	3	3	3	4		

METRAL P/N	ROW	CONTACT CODE	MOD.	1	2	3	4	5	6
85674-X82	E	3	3	3	3	3	1		
	D	3	3	3	3	3	1		
	C	3	3	3	3	3	1		
85674-X82LF	B	3	3	3	3	3	1		
	A	3	3	3	3	3	1		

METRAL P/N	ROW	CONTACT CODE	MOD.	1	2	3	4	5	6
85674-X83	E	1	3	3	3	3	3		
	D	1	3	3	3	3	3		
	C	1	3	3	3	3	3		
85674-X83LF	B	1	3	3	3	3	3		
	A	1	3	3	3	3	3		

METRAL P/N	ROW	CONTACT CODE	MOD.	1	2	3	4	5	6
85674-X84	E	3	3	1	2	2	3		
	D	3	3	1	2	2	3		
	C	3	3	1	2	2	3		
85674-X84LF	B	3	3	1	2	2	3		
	A	3	3	1	2	2	3		

METRAL P/N	ROW	CONTACT CODE	MOD.	1	2	3	4	5	6
85674-X85	E	7	7	6	8	3	3		
	D	7	7	6	8	3	3		
	C	7	7	6	8	3	3		
85674-X85LF	B	7	7	6	8	3	3		
	A	7	7	6	8	3	3		

METRAL P/N	ROW	CONTACT CODE	MOD.	1	2	3	4	5	6
85674-X86	E	4	4	4	4	3	3		
	D	4	4	4	4	3	3		
	C	4	4	4	4	3	3		
85674-X86LF	B	4	4	4	4	3	3		
	A	4	4	4	4	3	3		

METRAL P/N	ROW	CONTACT CODE	MOD.	1	2	3	4	5	6
85674-X87	E	3	4	3	4	3	4		
	D	3	4	3	4	3	4		
	C	3	4	3	4	3	4		
85674-X87LF	B	3	4	2	4	2	4		
	A	3	4	2	4	2	4		

METRAL P/N	ROW	CONTACT CODE	MOD.	1	2	3	4	5	6
85674-X88	E	8	7	8	8	7	7		
	D	8	7	8	8	7	7		
	C	8	7	8	8	7	7		
85674-X88LF	B	8	7	8	8	7	7		
	A	8	7	8	8	7	7		

METRAL P/N	ROW	CONTACT CODE	MOD.	1	2	3	4	5	6
85674-X89	E	3	8	6	6	6	6		
	D	3	8	6	6	6	6		
	C	3	8	6	6	6	6		
85674-X89LF	B	3	8	6	6	6	6		
	A	3	8	6	6	6	6		

METRAL P/N	ROW	CONTACT CODE	MOD.	1	2	3	4	5	6
85674-X90	E	2	2	2	2	2	2		
	D	2	2	2	2	2	2		
	C	2	2	2	2	2	2		
85674-X90LF	B	2	2	2	2	2	2		
	A	2	2	2	2	2	2		

METRAL P/N	ROW	CONTACT CODE	MOD.	1	2	3	4	5	6
85674-X91	E	2	2	2	2	2	2		
	D	1	2	2	2	2	2		
	C	2	2	2	2	2	2		
85674-X91LF	B	2	2	2	2	2	2		
	A	2	2	2	2	2	2		

METRAL P/N	ROW	CONTACT CODE	MOD.	1	2	3	4	5	6
85674-X93	E	3	4	2	2	2	2		
	D	3	4	2	2	2	2		
	C	3	4	2	2	2	2		
85674-X93LF	B	3	4	2	2	2	2		
	A	3	4	2	2	2	2		

METRAL P/N	ROW	CONTACT CODE	MOD.	1	2	3	4	5	6
85674-X94	E	4	3	4	3	4	4		
	D	4	3	4	3	4	4		
	C	4	3	4	3	4	4		
85674-X94LF	B	4	2	4	2	4	4		
	A	4	2	4	2	4	4		

METRAL P/N	ROW	CONTACT CODE	MOD.	1	2	3	4	5	6
85674-X95	E	4	4	3	4	3	4		
	D	4	4	3	4	3	4		
	C	4	4	3	4	3	4		
85674-X95LF	B	4	4	2	4	2	4		
	A	4	4	2	4	2	4		

REV: 2008-04-10

mat'l code		--		tolerances unless otherwise specified		CUSTOMER		FCI		www.fciconnect.com	
thr	ecn no.	dr	date	linear	0.X ±0.3	projection	title	product family	code	sheet	
CH				angles	0.XX ±0.13	1st angle	METRAL SIGNAL HEADER	size	213	6	
				dr	.XXX ±.051	MM	I MOD, 5 ROW PRESS-FIT	scale	85674		
				eng	0 ±.2	1:1					
				chr	I.BRINGARD 11/19/99						
				appd	M.STRAMSER 11/19/99						
sheet index	revision sheet				M.STRAMSER 11/19/99						
					M.STRAMSER 02/29/00						

1 | 2

Pro/E

3 |

cage code 22526

4



This document is the property of, and embodies CONFIDENTIAL and PROPRIETARY information of FCI. No part of the information shown on this document may be used in any way or disclosed to others without the written consent of FCI. Copyright FCI.

REV: 2008-04-08

METRAL P/N	ROW	CONTACT CODE	MOD.	1	2	3	4	5	6
85674-X121	E	6	6	6	5	6	6	6	6
	D	6	6	6	6	6	6	6	6
	C	6	6	6	6	6	6	6	6
85674-X121LF	B	6	6	6	6	6	6	6	6
	B	6	6	6	6	6	6	6	6
	A	6	6	6	6	6	6	6	6

METRAL P/N	ROW	CONTACT CODE	MOD.	1	2	3	4	5	6
85674-X122	E	6	5	6	6	6	6	6	6
	D	6	6	6	6	6	6	6	6
	C	6	6	6	6	6	6	6	6
85674-X122LF	B	6	6	6	6	6	6	6	6
	B	6	6	6	6	6	6	6	6
	A	6	6	6	6	6	6	6	6

METRAL P/N	ROW	CONTACT CODE	MOD.	1	2	3	4	5	6
85674-X123	E	2	1	2	2	2	2	2	2
	D	2	2	2	2	2	2	2	2
	C	2	2	2	2	2	2	2	2
85674-X123LF	B	2	2	2	2	2	2	2	2
	B	2	2	2	2	2	2	2	2
	A	2	2	2	2	2	2	2	2

METRAL P/N	ROW	CONTACT CODE	MOD.	1	2	3	4	5	6
85674-X124	E	6	6	6	7	8	8	8	8
	D	6	6	6	6	6	6	6	6
	C	6	6	6	6	6	6	6	6
85674-X124LF	B	6	6	6	6	6	6	6	6
	B	6	6	6	6	6	6	6	6
	A	6	6	6	6	6	6	6	6

METRAL P/N	ROW	CONTACT CODE	MOD.	1	2	3	4	5	6
85674-X125	E	1	2	2	2	2	2	2	2
	D	1	2	2	2	2	2	2	2
	C	1	2	2	2	2	2	2	2
85674-X125LF	B	1	2	2	2	2	2	2	2
	B	1	2	2	2	2	2	2	2
	A	1	2	2	2	2	2	2	2

METRAL P/N	ROW	CONTACT CODE	MOD.	1	2	3	4	5	6
85674-X126	E	3	3	3	3	3	3	1	1
	D	3	3	3	3	3	3	3	3
	C	3	3	3	3	3	3	3	4
85674-X126LF	B	3	3	3	3	3	3	3	3
	B	3	3	3	3	3	3	3	3
	A	3	3	3	3	3	3	3	1

METRAL P/N	ROW	CONTACT CODE	MOD.	1	2	3	4	5	6
85674-X127	E	4	2	2	2	2	2	2	2
	D	4	2	2	2	2	2	2	2
	C	4	2	2	2	2	2	2	2
85674-X127LF	B	4	2	2	2	2	2	2	2
	B	4	2	2	2	2	2	2	2
	A	4	2	2	2	2	2	2	2

METRAL P/N	ROW	CONTACT CODE	MOD.	1	2	3	4	5	6
85674-X128	E	19	2	2	2	2	2	2	2
	D	2	2	2	2	2	2	2	2
	C	2	2	2	2	2	2	2	2
85674-X128LF	B	2	2	2	2	2	2	2	2
	B	2	2	2	2	2	2	2	2
	A	2	1	2	2	2	2	2	2

METRAL P/N	ROW	CONTACT CODE	MOD.	1	2	3	4	5	6
85674-X129	E	19	2	2	2	2	2	2	2
	D	2	2	2	2	2	2	2	2
	C	2	2	2	2	2	2	2	2
85674-X129LF	B	1	2	2	2	2	2	2	2
	B	1	2	2	2	2	2	2	2
	A	2	1	2	2	2	2	2	2

METRAL P/N	ROW	CONTACT CODE	MOD.	1	2	3	4	5	6
85674-X130	E	6	6	6	6	6	6	2	2
	D	6	6	6	6	6	6	2	2
	C	6	6	6	6	6	6	2	2
85674-X130LF	B	6	6	6	6	2	1	6	2
	B	6	6	6	6	2	1	6	2
	A	6	6	6	6	6	6	2	2

METRAL P/N	ROW	CONTACT CODE	MOD.	1	2	3	4	5	6
85674-X131	E	2	2	2	2	2	2	2	2
	D	2	2	2	2	2	2	2	2
	C	2	2	2	2	2	2	2	2
85674-X131LF	B	2	2	2	1	9	2	2	2
	B	2	2	2	1	9	2	2	2
	A	2	2	2	2	2	2	2	2

METRAL P/N	ROW	CONTACT CODE	MOD.	1	2	3	4	5	6
85674-X132	E	1	3	3	1	3	3	3	3
	D	1	1	1	1	1	1	1	1
	C	1	1	1	1	1	1	1	1
85674-X132LF	B	1	1	1	1	1	1	1	1
	B	1	1	1	1	1	1	1	1
	A	1	3	3	1	3	3	3	3

METRAL P/N	ROW	CONTACT CODE	MOD.	1	2	3	4	5	6
85674-X133	E	59	7	31	7	59	7		
	D	59	7	31	7	59	7		
	C	59	7	31	7	59	7		
85674-X133LF	B	59	7	31	7	59	7		
	B	59	7	31	7	59	7		
	A	59	7	31	7	59	7		

METRAL P/N	ROW	CONTACT CODE	MOD.	1	2	3	4	5	6
85674-X134	E	2	2	2	2	1	2		
	D	2	2	2	2	2	2		
	C	2	2	2	2	2	2		
85674-X134LF	B	2	2	2	2	2	2		
	B	2	2	2	2	2	2		
	A	2	2	2	2	2	2		

METRAL P/N	ROW	CONTACT CODE	MOD.	1	2	3	4	5	6
85674-X135	E	1	1	2	2	3	3		
	D	1	1	2	2	3	3		
	C	1	1	2	2	3	3		
85674-X135LF	B	1	1	2	2	3	3		
	B	1	1	2	2	3	3		
	A	1	1	2	2	3	3		

METRAL P/N	ROW	CONTACT CODE	MOD.	1	2	3	4	5	6
85674-X136	E	2	2	2	2	2	2		
	D	2	2	2	2	2	2		
	C	2	2	2	2	2	2		
85674-X136LF	B	2	2	2	2	2	2		
	B	2	2	2	2	2	2		
	A	2	2	2	2	2	2		

METRAL P/N	ROW	CONTACT CODE	MOD.	1	2	3	4	5	6
85674-X137	E	2	2	2	2	2	2		
	D	2	2	2	2	2	2		
	C	-	-	-	-	-	-		
85674-X137LF	B	2	2	2	2	2	2		
	B	2	2	2	2	2	2		
	A	2	2	2	2	2	2		

METRAL P/N	ROW	CONTACT CODE	MOD.	1	2	3	4	5	6
85674-X138	E	1	1	-	2	2	2		
	D	1	1	-	2	2	2		
	C	1	1	-	-	-	-		
85674-X138LF	B	1	1	-	2	2	2		
	B	1	1	-	2	2	2		
	A	1	1	-	2	2	2		

METRAL P/N	ROW	CONTACT CODE	MOD.	1	2	3	4	5	6
85674-X139	E	3	3	3	3	3	3		
	D	3	3	3	3	3	3		
	C	1	3	3	3	3	3		
85674-X139LF	B	3	3	3	3	3	3		
	B	3	3	3	3	3	3		
	A	3	3	3	3	3	3		

METRAL P/N	ROW	CONTACT CODE	MOD.	1	2	3	4	5	6
85674-X140	E	3	3	2	2	2	2		
	D	3	3	2	2	2	2		
	C	3	3	2	2	2	2		
85674-X140LF	B	3	3	2	2	2	2		
	B	3	3	2	2	2	2		
	A	3	3	2	2	2	2		

METRAL P/N	ROW	CONTACT CODE	MOD.	1	2	3	4	5	6
85674-X141	E	1	1	1	1	1	1		
	D	1	1	1	1	1	1		
	C	1	1	1	1	1	1		
85674-X141LF	B	1	1	1	1	1	1		
	B	1	1	1	1	1	1		
	A	1	1	1	1	1	1		

METRAL P/N	ROW	CONTACT CODE	MOD.	1	2	3
------------	-----	--------------	------	---	---	---



This document is the property of, and embodies
 CONFIDENTIAL and PROPRIETARY information of FCJ.
 No part of the information shown on this
 document may be used in any way or
 disclosed to any person without the
 written consent of FCJ.
 Copyright FCJ.

METRAL P/N	ROW	CONTACT MOD.	CODE	1	2	3	4	5	6
85674-X145	E	3	3	3	3	2	1		
	D	3	3	3	3	2	1		
	C	3	3	3	3	2	1		
85674-X145LF	B	3	3	3	3	2	1		
	D	3	3	3	3	2	1		
	A	3	3	3	3	2	1		
85674-X146	E	2	2	2	2	2	2		
	D	2	2	2	2	2	2		
	C	2	2	2	2	2	2		
85674-X146LF	B	2	2	2	2	2	2		
	D	2	2	2	2	2	2		
	A	2	2	2	2	2	2		
85674-X147	E	2	2	2	2	2	2		
	D	2	2	2	2	2	2		
	C	2	2	2	2	2	2		
85674-X147LF	B	2	2	2	2	2	2		
	D	2	2	2	2	2	2		
	A	2	2	2	2	2	2		
85674-X148	E	1	1	2	2	2	2		
	D	1	1	2	2	2	2		
	C	2	2	2	2	2	2		
85674-X148LF	B	1	1	2	2	2	2		
	D	1	1	2	2	2	2		
	A	1	1	2	2	2	2		
85674-X149	E	2	2	2	2	2	2		
	D	2	2	2	2	1	2		
	C	2	2	2	2	1	2		
85674-X149LF	B	2	2	2	2	2	2		
	D	2	2	2	2	2	2		
	A	2	2	2	2	2	2		
85674-X150	E	1	1	2	2	2	2		
	D	2	2	2	2	2	2		
	C	2	2	2	2	2	2		
85674-X150LF	B	2	2	2	2	2	2		
	D	2	2	2	2	2	2		
	A	2	2	2	2	2	2		

METRAL P/N	ROW	CONTACT MOD.	CODE	1	2	3	4	5	6
85674-X151	E	6	6	6	6	6	6		
	D	6	6	6	6	6	5		
	C	6	6	6	6	6	6		
85674-X151LF	B	6	6	6	6	6	6		
	D	6	6	6	6	6	6		
	A	6	6	6	6	6	6		
85674-X152	E	7	6	6	6	6	6		
	D	7	6	6	6	6	6		
	C	6	6	6	6	6	6		
85674-X152LF	B	7	6	6	6	6	6		
	D	7	6	6	6	6	6		
	A	7	6	6	6	6	6		
85674-X153	E	2	2	2	2	2	2		
	D	2	2	2	2	2	2		
	C	2	2	2	2	2	2		
85674-X153LF	B	2	2	2	2	2	2		
	D	2	2	2	2	2	2		
	A	2	2	2	2	2	2		
85674-X154	E	2	2	2	2	2	2		
	D	2	2	2	2	2	2		
	C	2	2	2	2	2	2		
85674-X154LF	B	2	2	2	2	2	2		
	D	2	2	2	2	2	2		
	A	2	2	2	2	2	2		
85674-X155	E	1	1	3	3	3	3		
	D	3	1	3	3	3	3		
	C	3	1	3	3	3	3		
85674-X155LF	B	1	1	3	3	3	3		
	D	3	1	3	3	3	3		
	A	1	1	3	3	3	3		
85674-X156	E	1	1	1	1	1	2		
	D	1	1	1	1	1	2		
	C	1	1	1	1	1	2		
85674-X156LF	B	1	1	1	1	1	2		
	D	1	1	1	1	1	2		
	A	1	1	1	1	1	2		

METRAL P/N	ROW	CONTACT MOD.	CODE	1	2	3	4	5	6
85674-X157	E	3	3	3	3	1	3		
	D	3	3	3	3	1	3		
	C	3	3	3	3	1	3		
85674-X157LF	B	3	3	3	3	1	3		
	D	3	3	3	3	1	3		
	A	3	3	3	3	1	3		
85674-X158	E	3	3	3	3	3	3		
	D	3	3	3	3	3	3		
	C	3	3	3	3	3	3		
85674-X158LF	B	3	3	3	3	3	3		
	D	3	3	3	3	3	3		
	A	3	3	3	3	3	3		
85674-X159	E	2	2	2	2	2	2		
	D	2	2	2	2	2	2		
	C	2	2	2	2	2	2		
85674-X159LF	B	2	2	2	2	2	2		
	D	2	2	2	2	2	2		
	A	2	2	2	2	2	2		
85674-X160	E	3	3	3	3	3	3		
	D	3	3	3	3	3	3		
	C	3	3	3	3	3	3		
85674-X160LF	B	3	3	3	3	3	3		
	D	3	3	3	3	3	3		
	A	3	3	3	3	3	3		

METRAL P/N	ROW	CONTACT MOD.	CODE	1	2	3	4	5	6
85674-X161	E	3	3	3	3	3	3		
	D	3	3	3	3	3	3		
	C	1	9	1	9	1	9	3	3
85674-X161LF	B	3	3	3	3	3	3		
	D	3	3	3	3	3	3		
	A	3	3	3	3	3	3		

mat'l code		--		tolerances unless otherwise specified		CUSTOMER		FCJ		www.fcjconnect.com	
lfr	ecm no.	dr	date	linear	0.X ±0.3	projection	COPY	title	METRAL SIGNAL HEADER	code	213
CH				angles	.XX ±0.13	MM		product family	METRAL	sheet	9
				dr	.XXX ±.051	scale	1:1	size	85674		
				eng	0° ±2°			dwg no			
				chr	I.BRINGARD 11/19/99						
				appd	M.STRAMSER 11/19/99						
					M.STRAMSER 11/19/99						
					M.STRAMSER 02/29/00						
sheet index	revision	sheet									

REV: 2008-10-10

1 | 2

Pro/E

3 |

cage code 22526

4

PRODUCT NUMBER
85674-XYX OR 85674-XYXX
85674-XYXLF OR 85674-XYXXLF

NOTES:

- FOR DIM A AND B SEE SHEET 2 AND UP.
- BODY MATERIAL: LIQUID CRYSTAL
POLYMER 30 % GLASS.
FLAME RETARDANT ACC. UL 94-V0.
- PIN MATERIAL:
PHOSPHOR BRONZE.
- PLATING ON PRESS-FIT TAIL:
85674-XYX IS SnPb
85674-XYXLF IS Sn (LEAD FREE)
PLATING ON CONTACT AREA CONFORMS TO PERFORMANCE
LEVEL SHOWN IN TABLE BELOW.
- PRODUCT MARKING:
PART NUMBER DESIGNATION & BATCH I.D.
- ALL PRODUCTS WITH PART NUMBERS SHOWN IN
SUBSEQUENT TABLES WILL BE PACKAGED IN TUBES.
IF TRAY PACKAGING IS REQUIRED, A SUFFIX "P"
WILL BE ADDED TO THE END OF THE PART NUMBER.
EXAMPLE: XXXXX-XXXXP
- PRODUCT SPECIFICATION GS-12-180
APPLICATION SPECIFICATION BUS-20-073
- AFTER INSERTION INTO CIRCUIT BOARD WITH
QUALIFIED TOOL.
- THE PRODUCTS WHERE THE PART NUMBER ENDS IN LF MEET THE
EUROPEAN UNION DIRECTIVES AND OTHER COUNTRY REGULATIONS
AS DESCRIBED IN GS-22-008.

ALL PRODUCTS EXCEPT THOSE WITH PART NUMBERS CONTAINING
(DRAWING NO.)-N1--- OR (DRAWING NO.)-N5--- WILL WITHSTAND EXPOSURE
TO 260°C FOR 60 SECONDS IN A CONVECTION, INFAR-RED OR
VAPOR PHASE REFLOW OVEN. PART NUMBERS (DRAWING NO.)-N1---
AND (DRAWINGS NO.)-N5--- WILL NOT WITHSTAND REFLOW AND Au CONTACT
SURFACE OF THE CONTACTS SHALL BE EXPOSED TO A MAXIMUM 140°C FOR
NO LONGER THAN 15 SECONDS IN A WAVE SOLDER APPLICATION.

PLATING IN CONTACT AREA		
DASH NUMBER	PERFORMANCE LEVEL	NOTES
-PYX OR -PYYX	0.25 um GOLD MIN.	-
-N1XX OR -N1YYX	TELCORDIA CO (NXT)	-
-N5XX OR -N5YYX	TELCORDIA UE (NXT)	-
-1YY OR -1YXX	TELCORDIA CO	-
-2YY OR -2YXX	TELECOM CLASS	-
-3YY OR -3YXX	IEC CLASS I	-
-5YY OR -5YXX	TELCORDIA UE	-
-9YY OR -9YXX	TELCORDIA CO	-
-N1YYLF OR -N1YYXLF	TELCORDIA CO (NXT) IEC CLASS I	SEE NOTE 9
-N5YYLF OR -N5YYXLF	TELCORDIA UE (NXT)	SEE NOTE 9
-1YYLF OR -1YYXLF	TELCORDIA CO IEC CLASS I	SEE NOTE 9
-2YYLF OR -2YYXLF	TELECOM CLASS	SEE NOTE 9
-5YYLF OR -5YYXLF	TELCORDIA UE	SEE NOTE 9



This document is the property of, and embodies
CONFIDENTIAL and PROPRIETARY information of FCI.
No part of the information shown on this
document may be used in any way or
reproduced in any form without the
written consent of FCI.
Copyright FCI.

mat'l code		--		tolerances unless otherwise specified		CUSTOMER		www.fciconnect.com	
lfr	ecm no.	dr	date	linear	0.X ±0.3	projection	COPY	METRAL SIGNAL HEADER	
CH				angles	0.XX ±0.13			I MOD, 5 ROW PRESS-FIT	
				dr	.XXX ±.051		product family	METRAL	code
				eng	0 ±.2	scale	size	dwg no	213
				chr	I.BRINGARD 11/19/99	1:1	A	85674	sheet
				appd	M.STRAMSER 11/19/99				10
					M.STRAMSER 02/29/00				
sheet index	revision sheet								

REV: 2008-04-08

1 | 2

Pro/E

3 |

cage code 22526

4

PDM: Rev:CH

STATUS:Released

Printed: May 16, 2009