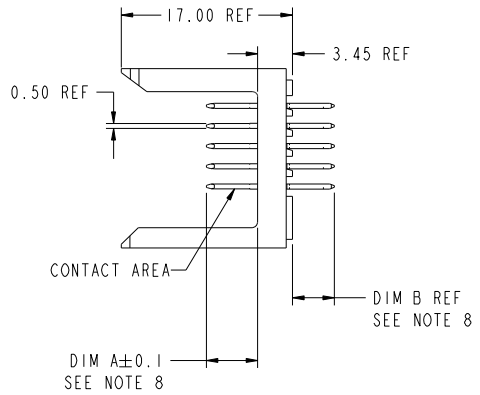
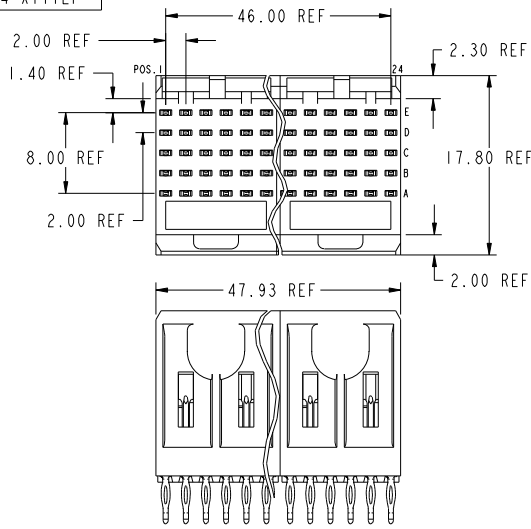


PRODUCT NUMBER
 85854-XYX
 OR
 85854-XYXX
 85854-XYXLF
 OR
 85854-XYXXLF



This document is the property of, and embodies CONFIDENTIAL and PROPRIETARY information of FCJ. No part of the information shown on this document may be used in any way or disclosed to others without the written consent of FCJ. Copyright FCJ.

mat'l code				tolerances unless otherwise specified		CUSTOMER	
lfr	ecn no.	dr	date	linear	0.X ±0.3	COPY	www.fcjconnect.com
DE	V06-0492	DCH	2006-05-23		0.XX ±0.13	projection	
DF	DG07-0487	Cenh	12/05/07	angles	.XXX ±.051		title
DG	DG09-0344	TER	2009-11-10	of ±2°			METAL
DB	V04-0353	DAI	05/04/04	dr	I.BRINGARD 11/19/99	product family	METRAL
DC	V04-0560	HTB	06/01/04	engr	M.STRAMSER 11/19/99	size	213
DD	V04-1100	DAI	01/26/05	chr	M.STRAMSER 11/19/99	scale	1 of 20
				opcd	M.STRAMSER 02/29/00	2:1	code
sheet index	revision sheet	DG	1	DG	20	A	85854

cage code 22526

PDM: Rev:DG

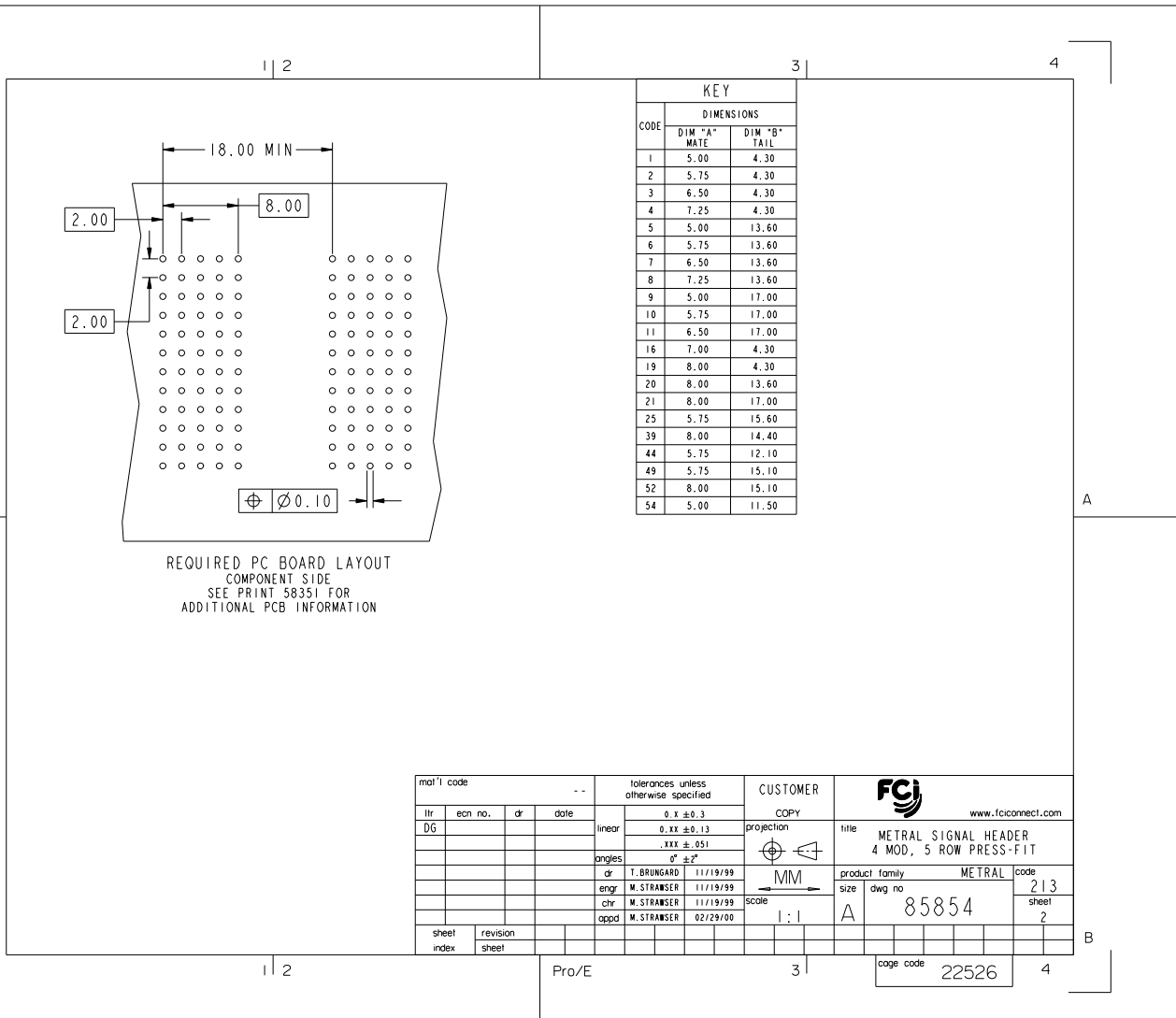
STATUS:Released

Printed: Nov 11, 2009



This document is the property of and embodies CONFIDENTIAL and PROPRIETARY information of FCI. No part of the information shown on this document may be used in any way or disclosed to others without the written consent of FCI. Copyright FCI.

REV: 2008-11-10



REQUIRED PC BOARD LAYOUT
COMPONENT SIDE
SEE PRINT 58351 FOR
ADDITIONAL PCB INFORMATION

CODE	DIMENSIONS	
	DIM "A" MATE	DIM "B" TAIL
1	5.00	4.30
2	5.75	4.30
3	6.50	4.30
4	7.25	4.30
5	5.00	13.60
6	5.75	13.60
7	6.50	13.60
8	7.25	13.60
9	5.00	17.00
10	5.75	17.00
11	6.50	17.00
16	7.00	4.30
19	8.00	4.30
20	8.00	13.60
21	8.00	17.00
25	5.75	15.60
39	8.00	14.40
44	5.75	12.10
49	5.75	15.10
52	8.00	15.10
54	5.00	11.50

mat'l code				tolerances unless otherwise specified		CUSTOMER		FCI		www.fciconnect.com	
ltr	ecm no.	dr	date	linear	0.X ±0.3	projection	COPY		title		
DG					0.XX ±0.13	MM	METRAL		METRAL SIGNAL HEADER		
				angles	.XXX ±.051	MM	4 MOD, 5 ROW PRESS-FIT		product family		
				dr	0° ±2°	MM	METRAL		code		
				eng	I.BRINGARD 11/19/99	MM	METRAL		size		
				chr	M.STRAMSER 11/19/99	MM	METRAL		dwg no		
				appd	M.STRAMSER 02/29/00	MM	METRAL		85854		
sheet index	revision sheet					scale	1:1		code		
							A		22526		

Pro/E

code code 22526

PDM: Rev:DG

STATUS:Released

Printed: Nov 11, 2009



This document is the property of, and embodies CONFIDENTIAL and PROPRIETARY information of FCJ. No part of the information shown on this document may be used in any way or disclosed to others without the written consent of FCJ. Copyright FCJ.

METRAL P/N	CONTACT CODE MOD. 1	MOD. 2	MOD. 3	MOD. 4
ROW	1 2 3 4 5 6	7 8 9 10 11 12 13 14 15 16 17 18 19 20 21 22 23 24		
E	2 2 2 2 2 2	2 2 2 2 2 2 2 2 2 2 2 2 2 2 2 2 2 2		
D	6 6 6 6 6 6	6 6 6 6 6 6 6 6 6 6 6 6 6 6 6 6 6 6		
C	6 6 6 6 6 6	6 6 6 6 6 6 6 6 6 6 6 6 6 6 6 6 6 6		
B	6 6 6 6 6 6	6 6 6 6 6 6 6 6 6 6 6 6 6 6 6 6 6 6		
A	6 6 6 6 6 6	6 6 6 6 6 6 6 6 6 6 6 6 6 6 6 6 6 6		

METRAL P/N	CONTACT CODE MOD. 1	MOD. 2	MOD. 3	MOD. 4
ROW	1 2 3 4 5 6	7 8 9 10 11 12 13 14 15 16 17 18 19 20 21 22 23 24		
E	19 3 19 19 3 19 3	3 19 3 3 19 3 3 19 3 3 19 3 3 19 3 3 19 3 3 19		
D	3 19 19 19 19 3 3	3 19 3 3 19 3 3 19 3 3 19 3 3 19 3 3 19 3 3 19 3		
C	19 3 19 19 19 3 19 3	3 19 3 3 19 3 3 19 3 3 19 3 3 19 3 3 19 3 3 19 3		
B	3 19 19 19 3 19 3	3 19 3 3 19 3 3 19 3 3 19 3 3 19 3 3 19 3 3 19 3		
A	19 19 19 19 19 3 3	3 19 3 3 19 3 3 19 3 3 19 3 3 19 3 3 19 3 3 19 3		

METRAL P/N	CONTACT CODE MOD. 1	MOD. 2	MOD. 3	MOD. 4
ROW	1 2 3 4 5 6	7 8 9 10 11 12 13 14 15 16 17 18 19 20 21 22 23 24		
E	2 2 2 2 2 2	2 2 2 2 2 2 2 2 2 2 2 2 2 2 2 2 2 2		
D	2 2 2 2 2 2	2 2 2 2 2 2 2 2 2 2 2 2 2 2 2 2 2 2		
C	19 19 2 2 2 2	2 2 2 2 2 2 2 2 2 2 2 2 2 2 2 2 2 2		
B	2 2 2 2 2 2	2 2 2 2 2 2 2 2 2 2 2 2 2 2 2 2 2 2		
A	2 2 2 2 2 2	2 2 2 2 2 2 2 2 2 2 2 2 2 2 2 2 2 2		

METRAL P/N	CONTACT CODE MOD. 1	MOD. 2	MOD. 3	MOD. 4
ROW	1 2 3 4 5 6	7 8 9 10 11 12 13 14 15 16 17 18 19 20 21 22 23 24		
E	1 1 1 1 1 1	1 1 1 1 1 1 1 1 1 1 1 1 1 1 1 1 1 1		
D	1 1 1 19 1 1	1 1 1 1 1 1 1 1 1 1 1 1 1 1 1 1 1 19 1 1		
C	1 1 1 1 1 1	1 1 1 1 1 1 1 1 1 1 1 1 1 1 1 1 1 1 1 1		
B	1 1 1 1 1 1	1 1 1 1 1 1 1 1 1 1 1 1 1 1 1 1 1 1 1 1		
A	1 1 1 1 1 1	1 1 1 1 1 1 1 1 1 1 1 1 1 1 1 1 1 1 1 1		

METRAL P/N	CONTACT CODE MOD. 1	MOD. 2	MOD. 3	MOD. 4
ROW	1 2 3 4 5 6	7 8 9 10 11 12 13 14 15 16 17 18 19 20 21 22 23 24		
E	2 2 2 2 2 2	2 2 2 2 2 2 2 2 2 2 2 2 2 2 2 2 2 2		
D	2 2 2 2 2 2	2 2 2 2 2 2 2 2 2 2 2 2 2 2 2 2 2 2		
C	19 19 2 2 2 2	2 2 2 2 2 2 2 2 2 2 2 2 2 2 2 2 2 2		
B	2 2 2 2 2 2	2 2 2 2 2 2 2 2 2 2 2 2 2 2 2 2 2 2		
A	2 2 2 2 2 2	2 2 2 2 2 2 2 2 2 2 2 2 2 2 2 2 2 2		

METRAL P/N	CONTACT CODE MOD. 1	MOD. 2	MOD. 3	MOD. 4
ROW	1 2 3 4 5 6	7 8 9 10 11 12 13 14 15 16 17 18 19 20 21 22 23 24		
E	10 10 10 10 10 10	10 10 10 10 10 10 10 10 10 10 10 10 10 10 10 10 10 10		
D	10 10 10 10 10 10	10 10 10 10 10 10 10 10 10 10 10 10 10 10 10 10 10 10		
C	10 10 10 10 10 10	10 10 10 10 10 10 10 10 10 10 10 10 10 10 10 10 10 10		
B	10 10 10 10 10 10	10 10 10 10 10 10 10 10 10 10 10 10 10 10 10 10 10 10		
A	2 2 2 2 2 2	2 2 2 2 2 2 2 2 2 2 2 2 2 2 2 2 2 2		

METRAL P/N	CONTACT CODE MOD. 1	MOD. 2	MOD. 3	MOD. 4
ROW	1 2 3 4 5 6	7 8 9 10 11 12 13 14 15 16 17 18 19 20 21 22 23 24		
E	25 25 25 25 25 25	25 25 25 25 25 25 25 25 25 25 25 25 25 25 25 25 25 25		
D	25 25 25 25 25 25	25 25 25 25 25 25 25 25 25 25 25 25 25 25 25 25 25 25		
C	25 25 25 25 25 25	25 25 25 25 25 25 25 25 25 25 25 25 25 25 25 25 25 25		
B	25 25 25 25 25 25	25 25 25 25 25 25 25 25 25 25 25 25 25 25 25 25 25 25		
A	2 2 2 2 2 2	2 2 2 2 2 2 2 2 2 2 2 2 2 2 2 2 2 2		

METRAL P/N	CONTACT CODE MOD. 1	MOD. 2	MOD. 3	MOD. 4
ROW	1 2 3 4 5 6	7 8 9 10 11 12 13 14 15 16 17 18 19 20 21 22 23 24		
E	2 2 2 2 2 2	2 2 2 2 2 2 2 2 2 2 2 2 2 2 2 2 2 2		
D	2 2 2 2 2 2	2 2 2 2 2 2 2 2 2 2 2 2 2 2 2 2 2 2		
C	2 2 2 2 2 2	2 2 2 2 2 2 2 2 2 2 2 2 2 2 2 2 2 2		
B	2 2 2 2 2 2	2 2 2 2 2 2 2 2 2 2 2 2 2 2 2 2 2 2		
A	2 2 2 2 2 2	2 2 2 2 2 2 2 2 2 2 2 2 2 2 2 2 2 2		

mat'l code		--		tolerances unless otherwise specified		CUSTOMER		FCJ		www.fcjconnect.com	
ltr	ecm no.	dr	date	linear	0.X ±0.3	projection	COPY		title		
DG				angles	0.XX ±0.13	MM	METRAL		METRAL SIGNAL HEADER		
				dr	.XX ±.051	scale	product family		4 MOD, 5 ROW PRESS-FIT		
				eng	0 ±.2	1:1	size		METRAL code		
				chr	T.BRINGARD 11/11/99		dwg no		213		
				appd	M.STRANSER 11/11/99		85854		sheet		
					M.STRANSER 11/11/99				3		
					M.STRANSER 02/29/00						
sheet index	revision sheet										

REV: 200-14-10

1 | 2

Pro/E

3 |

code code 22526

4



This document is the property of, and embodies CONFIDENTIAL and PROPRIETARY information of FCI. No part of the information shown on this document may be used in any way or be passed to others without the written consent of FCI. Copyright FCI.

METRAL P/N	ROW	CONTACT CODE MOD. 1					MOD. 2					MOD. 3					MOD. 4								
		1	2	3	4	5	6	7	8	9	10	11	12	13	14	15	16	17	18	19	20	21	22	23	24
85854-X25 SEE NOTE 10 LEAD FREE OPTION	E	-	6	-	6	-	6	-	6	-	6	-	6	-	6	-	6	-	6	-	6	-	6	-	6
	D	-	-	-	-	-	-	-	-	-	-	-	-	-	-	-	-	-	-	-	-	-	-	-	-
	C	-	6	-	6	-	6	-	6	-	6	-	6	-	6	-	6	-	6	-	6	-	6	-	6
	A	-	6	-	6	-	6	-	6	-	6	-	6	-	6	-	6	-	6	-	6	-	6	-	6

METRAL P/N	ROW	CONTACT CODE MOD. 1					MOD. 2					MOD. 3					MOD. 4								
		1	2	3	4	5	6	7	8	9	10	11	12	13	14	15	16	17	18	19	20	21	22	23	24
85854-X26 SEE NOTE 10 LEAD FREE OPTION	E	-	2	-	2	-	2	-	2	-	2	-	2	-	2	-	2	-	2	-	2	-	2	-	2
	D	-	-	-	-	-	-	-	-	-	-	-	-	-	-	-	-	-	-	-	-	-	-	-	-
	C	-	2	-	2	-	2	-	2	-	2	-	2	-	2	-	2	-	2	-	2	-	2	-	2
	A	-	2	-	2	-	2	-	2	-	2	-	2	-	2	-	2	-	2	-	2	-	2	-	2

METRAL P/N	ROW	CONTACT CODE MOD. 1					MOD. 2					MOD. 3					MOD. 4								
		1	2	3	4	5	6	7	8	9	10	11	12	13	14	15	16	17	18	19	20	21	22	23	24
85854-X27 SEE NOTE 10 LEAD FREE OPTION	E	-	6	-	6	-	6	-	6	-	6	-	6	-	6	-	6	-	6	-	6	-	6	-	6
	D	-	-	-	-	-	-	-	-	-	-	-	-	-	-	-	-	-	-	-	-	-	-	-	-
	C	-	6	-	6	-	6	-	6	-	6	-	6	-	6	-	6	-	6	-	6	-	6	-	6
	A	-	6	-	6	-	6	-	6	-	6	-	6	-	6	-	6	-	6	-	6	-	6	-	6

METRAL P/N	ROW	CONTACT CODE MOD. 1					MOD. 2					MOD. 3					MOD. 4								
		1	2	3	4	5	6	7	8	9	10	11	12	13	14	15	16	17	18	19	20	21	22	23	24
85854-X29 SEE NOTE 10 LEAD FREE OPTION	E	5	7	6	6	6	6	6	6	6	6	6	6	6	6	6	6	6	6	6	6	6	6	6	6
	D	5	7	6	6	6	6	6	6	6	6	6	6	6	6	6	6	6	6	6	6	6	6	6	6
	C	5	7	6	6	6	6	6	6	6	6	6	6	6	6	6	6	6	6	6	6	6	6	6	6
	A	5	7	6	6	6	6	6	6	6	6	6	6	6	6	6	6	6	6	6	6	6	6	6	6

METRAL P/N	ROW	CONTACT CODE MOD. 1					MOD. 2					MOD. 3					MOD. 4								
		1	2	3	4	5	6	7	8	9	10	11	12	13	14	15	16	17	18	19	20	21	22	23	24
85854-X30 SEE NOTE 10 LEAD FREE OPTION	E	1	3	2	2	2	2	2	2	2	2	2	2	2	2	2	2	2	2	2	2	2	2	2	2
	D	1	3	2	2	2	2	2	2	2	2	2	2	2	2	2	2	2	2	2	2	2	2	2	2
	C	1	3	2	2	2	2	2	2	2	2	2	2	2	2	2	2	2	2	2	2	2	2	2	2
	A	1	3	2	2	2	2	2	2	2	2	2	2	2	2	2	2	2	2	2	2	2	2	2	2

METRAL P/N	ROW	CONTACT CODE MOD. 1					MOD. 2					MOD. 3					MOD. 4							
		1	2	3	4	5	6	7	8	9	10	11	12	13	14	15	16	17	18	19	20	21	22	23
85854-X31 SEE NOTE 10 LEAD FREE OPTION	E	2	-	2	-	2	-	2	-	2	-	2	-	2	-	2	-	2	-	2	-	2	-	2
	D	-	-	-	-	-	-	-	-	-	-	-	-	-	-	-	-	-	-	-	-	-	-	-
	C	2	-	2	-	2	-	2	-	2	-	2	-	2	-	2	-	2	-	2	-	2	-	2
	A	2	-	2	-	2	-	2	-	2	-	2	-	2	-	2	-	2	-	2	-	2	-	2

METRAL P/N	ROW	CONTACT CODE MOD. 1					MOD. 2					MOD. 3					MOD. 4							
		1	2	3	4	5	6	7	8	9	10	11	12	13	14	15	16	17	18	19	20	21	22	23
85854-X32 SEE NOTE 10 LEAD FREE OPTION	E	1	-	1	-	1	-	1	-	1	-	1	-	1	-	1	-	1	-	1	-	1	-	1
	D	-	-	-	-	-	-	-	-	-	-	-	-	-	-	-	-	-	-	-	-	-	-	-
	C	1	-	1	-	1	-	1	-	1	-	1	-	1	-	1	-	1	-	1	-	1	-	1
	A	1	-	1	-	1	-	1	-	1	-	1	-	1	-	1	-	1	-	1	-	1	-	1

mat'l code		--		tolerances unless otherwise specified		CUSTOMER		www.fciconnect.com	
ltr	ecm no.	dr	date	linear	0.X ±0.3	projection	title	METRAL SIGNAL HEADER	
DG				angles	0.XX ±0.13		4 MOD, 5 ROW PRESS-FIT		
				dr	.XX ±.051		product family	METRAL	
				eng	0 ±.2	scale	size	dwg no	code
				chr		1:1	85854	213	
				appd			A	6	
sheet index	revision sheet								

REV C - 2008-04-10

1 | 2

Pro/E

3 |

cage code 22526

4



This document is the property of, and embodies CONFIDENTIAL and PROPRIETARY information of FCJ. No part of the information shown on this document may be used in any way or published or otherwise transmitted without the written consent of FCJ. Copyright FCJ.

METRAL P/N	CONTACT CODE MOD. 1				MOD. 2				MOD. 3				MOD. 4												
	ROW	1	2	3	4	5	6	7	8	9	10	11	12	13	14	15	16	17	18	19	20	21	22	23	24
85854-x65 SEE NOTE 10 LEAD FREE OPTION	E	3	3	3	3	3	3	3	3	3	3	3	3	3	3	3	3	3	3	3	3	3	3	3	3
	D	3	3	3	3	3	3	3	3	3	3	3	3	3	3	3	3	3	3	3	3	3	3	3	3
	C	3	3	3	3	3	3	3	3	3	3	3	3	3	3	3	3	3	3	3	3	3	3	3	3
	A	3	3	3	3	3	3	3	3	3	3	3	3	3	3	3	3	3	3	3	3	3	3	3	3
85854-x66 SEE NOTE 10 LEAD FREE OPTION	E	2	2	2	2	2	2	2	2	2	2	2	2	2	2	2	2	2	2	2	2	2	2	2	
	D	2	2	2	2	2	2	2	2	2	2	2	2	2	2	2	2	2	2	2	2	2	2	2	
	C	2	2	2	2	2	2	2	2	2	2	2	2	2	2	2	2	2	2	2	2	2	2	2	
	A	2	-	-	-	-	2	-	-	-	-	-	-	2	-	-	-	-	-	-	-	-	-	-	
85854-x67 SEE NOTE 10 LEAD FREE OPTION	E	2	2	2	2	2	2	2	2	2	2	2	2	2	2	2	2	2	2	2	2	2	2	2	
	D	2	2	2	2	2	2	2	2	2	2	2	2	2	2	2	2	2	2	2	2	2	2	2	
	C	2	2	2	2	2	2	2	2	2	2	2	2	2	2	2	2	2	2	2	2	2	2	2	
	A	2	2	2	2	2	2	2	2	2	2	2	2	2	2	2	2	2	2	2	2	2	2	2	
85854-x68 SEE NOTE 10 LEAD FREE OPTION	E	1	1	1	1	1	1	1	1	1	1	1	1	1	1	1	1	1	1	1	1	1	1	1	
	D	1	1	1	1	1	1	1	1	1	1	1	1	1	1	1	1	1	1	1	1	1	1	1	
	C	1	1	1	1	1	1	1	1	1	1	1	1	1	1	1	1	1	1	1	1	1	1	1	
	A	1	1	1	1	1	1	1	1	1	1	1	1	1	1	1	1	1	1	1	1	1	1	1	

METRAL P/N	CONTACT CODE MOD. 1				MOD. 2				MOD. 3				MOD. 4											
	ROW	1	2	3	4	5	6	7	8	9	10	11	12	13	14	15	16	17	18	19	20	21	22	23
85854-x69 SEE NOTE 10 LEAD FREE OPTION	E	2	2	2	2	2	2	2	2	2	2	2	2	2	2	2	2	2	2	2	2	2	2	2
	D	4	2	2	2	2	2	2	2	2	2	2	2	2	2	2	2	2	2	2	2	2	2	2
	C	2	2	2	2	2	2	2	2	2	2	2	2	2	2	2	2	2	2	2	2	2	2	2
	A	2	2	2	2	2	2	2	2	2	2	2	2	2	2	2	2	2	2	2	2	2	2	2
85854-x70 SEE NOTE 10 LEAD FREE OPTION	E	2	2	2	2	2	2	2	2	2	2	2	2	2	2	2	2	2	2	2	2	2	2	2
	D	2	2	2	2	2	2	2	2	2	2	2	2	2	2	2	2	2	2	2	2	2	2	2
	C	2	2	2	2	2	2	2	2	2	2	2	2	2	2	2	2	2	2	2	2	2	2	2
	A	2	2	2	2	2	2	2	2	2	2	2	2	2	2	2	2	2	2	2	2	2	2	2
85854-x71 SEE NOTE 10 LEAD FREE OPTION	E	5	5	6	5	5	5	5	5	5	5	5	5	5	5	5	5	5	5	5	5	5	5	6
	D	5	5	6	5	5	5	5	5	5	5	5	5	5	5	5	5	5	5	5	5	5	5	6
	C	5	5	6	5	5	5	5	5	5	5	5	5	5	5	5	5	5	5	5	5	5	5	6
	A	5	5	6	5	5	5	5	5	5	5	5	5	5	5	5	5	5	5	5	5	5	5	6
85854-x72 SEE NOTE 10 LEAD FREE OPTION	E	2	2	2	2	2	2	2	2	2	2	2	2	2	2	2	2	2	2	2	2	2	2	2
	D	2	2	2	2	2	2	2	2	2	2	2	2	2	2	2	2	2	2	2	2	2	2	2
	C	2	2	2	2	2	2	2	2	2	2	2	2	2	2	2	2	2	2	2	2	2	2	2
	A	2	2	2	2	2	2	2	2	2	2	2	2	2	2	2	2	2	2	2	2	2	2	2

mat'l code	--	tolerances unless otherwise specified	CUSTOMER	FCJ	www.fcjconnect.com	
ltr	ecm no.	dr	date	projection 	title METRAL SIGNAL HEADER 4 MOD, 5 ROW PRESS-FIT	
DG						product family size METRAL code 85854
				sheet 11		
sheet index	revision sheet			scale 1:1		

REV. 1 - 2006-11-10

Pro/E 3 cage code 22526 4



This document is the property of, and embodies CONFIDENTIAL and PROPRIETARY information of FCJ. No part of the information shown on this document may be used in any way or be passed to others without the written consent of FCJ. Copyright FCJ.

METRAL P/N	CONTACT CODE MOD. 1				MOD. 2				MOD. 3				MOD. 4											
	ROW	1	2	3	4	5	6	7	8	9	10	11	12	13	14	15	16	17	18	19	20	21	22	23
85854-x73 SEE NOTE 10 LEAD FREE OPTION	E	2	2	2	2	2	2	2	2	2	2	2	2	2	2	2	2	2	2	2	2	2	2	2
	D	2	2	2	2	2	2	2	2	2	2	2	2	2	2	2	2	2	2	2	2	2	2	2
	C	2	2	2	2	2	2	2	2	3	3	3	3	2	2	2	2	2	2	2	2	2	2	2
	B	2	2	2	2	2	2	2	2	2	3	2	2	2	2	2	2	2	2	2	2	2	2	2
	A	2	2	2	2	2	2	2	2	2	2	3	2	2	2	2	2	2	2	2	2	2	2	2

METRAL P/N	CONTACT CODE MOD. 1				MOD. 2				MOD. 3				MOD. 4											
	ROW	1	2	3	4	5	6	7	8	9	10	11	12	13	14	15	16	17	18	19	20	21	22	23
85854-x77 SEE NOTE 10 LEAD FREE OPTION	E	2	2	2	2	2	2	2	2	2	2	2	2	2	2	2	2	2	2	2	2	2	2	
	D	-	-	-	-	-	-	-	-	-	-	-	-	-	-	-	-	-	-	-	2	4	2	2
	C	2	-	4	-	2	-	2	-	2	-	2	-	2	-	4	-	2	-	2	2	2	4	4
	B	-	-	-	-	-	-	-	-	-	-	-	-	-	-	-	-	-	-	-	2	2	4	4
	A	2	-	2	-	2	-	2	-	2	-	2	-	2	-	2	-	2	-	2	2	2	4	2

METRAL P/N	CONTACT CODE MOD. 1				MOD. 2				MOD. 3				MOD. 4											
	ROW	1	2	3	4	5	6	7	8	9	10	11	12	13	14	15	16	17	18	19	20	21	22	23
85854-x75 SEE NOTE 10 LEAD FREE OPTION	E	3	1	9	1	1	1	1	1	1	1	1	1	1	1	1	1	1	1	1	1	1	1	
	D	3	1	9	1	1	1	1	1	1	1	1	1	1	1	1	1	1	1	1	1	1	1	
	C	3	1	9	1	1	1	1	1	1	1	1	1	1	1	1	1	1	1	1	1	1	1	
	B	3	1	9	1	1	1	1	1	1	1	1	1	1	1	1	1	1	1	1	1	1	1	
	A	3	1	9	1	1	1	1	1	1	1	1	1	1	1	1	1	1	1	1	1	1	1	

METRAL P/N	CONTACT CODE MOD. 1				MOD. 2				MOD. 3				MOD. 4											
	ROW	1	2	3	4	5	6	7	8	9	10	11	12	13	14	15	16	17	18	19	20	21	22	23
85854-x79 SEE NOTE 10 LEAD FREE OPTION	E	2	2	2	2	2	2	2	2	2	2	2	2	2	2	2	2	2	2	2	2	2	2	
	D	2	1	1	1	1	1	1	1	2	2	2	2	2	2	2	2	2	2	2	2	2	2	
	C	2	2	2	2	2	2	2	2	2	2	2	2	2	2	2	2	2	2	2	2	2	2	
	B	1	1	1	1	1	1	1	1	1	2	2	2	2	2	2	2	2	2	2	2	2	2	
	A	1	2	2	2	2	2	2	2	2	2	2	2	2	2	2	2	2	2	2	2	2	2	

METRAL P/N	CONTACT CODE MOD. 1				MOD. 2				MOD. 3				MOD. 4											
	ROW	1	2	3	4	5	6	7	8	9	10	11	12	13	14	15	16	17	18	19	20	21	22	23
85854-x76 SEE NOTE 10 LEAD FREE OPTION	E	4	4	4	3	3	3	3	3	3	3	3	3	3	3	3	3	3	3	3	3	3	3	
	D	1	4	4	4	4	3	3	3	3	3	3	3	3	3	3	3	3	3	3	4	4	4	3
	C	3	3	4	4	4	3	3	3	3	3	3	3	3	3	3	3	3	3	3	4	4	4	3
	B	3	3	3	4	4	4	3	3	3	3	3	3	3	3	3	3	3	3	3	4	4	4	3
	A	3	3	3	3	3	3	3	3	3	3	3	3	3	3	3	3	3	3	3	4	4	4	3

METRAL P/N	CONTACT CODE MOD. 1				MOD. 2				MOD. 3				MOD. 4											
	ROW	1	2	3	4	5	6	7	8	9	10	11	12	13	14	15	16	17	18	19	20	21	22	23
85854-x80 SEE NOTE 10 LEAD FREE OPTION	E	1	1	1	1	2	1	1	1	1	1	1	1	1	1	1	1	1	1	1	1	1	1	
	D	2	2	2	1	1	2	2	2	2	2	2	2	2	2	1	1	2	2	2	2	2	2	
	C	1	1	1	3	2	2	2	2	2	2	2	2	2	2	1	2	2	2	2	2	2	2	
	B	1	1	1	1	1	1	1	1	1	2	2	2	2	2	2	2	2	2	2	2	2	2	
	A	1	2	2	2	2	2	2	2	2	2	2	2	2	2	2	2	2	2	2	2	2	2	

mat'l code		--		tolerances unless otherwise specified		CUSTOMER		FCJ		www.fcjconnect.com		
ltr	ecm no.	dr	date	linear	0.X ±0.3	projection	title	METRAL SIGNAL HEADER				
DG				angles	0.XX ±0.13	MM	4 MOD, 5 ROW PRESS-FIT					
				dr	.XX ±.051	scale	product family	METRAL				
				eng	0' ±2"	1:1	size	dwg no	85854			
				chr	I.BRINGARD 11/19/99		code	213				
				app	M.STRAMSER 11/19/99		sheet	12				
sheet index	revision sheet				M.STRAMSER 02/29/00							

REV: 200-04-0

1 | 2

Pro/E

3 |

cage code 22526

4



This document is the property of and embodies CONFIDENTIAL and PROPRIETARY information of FCI. No part of the information shown on this document may be used in any way or disclosed to others without the written consent of FCI. Copyright FCI.

METRAL P/N	ROW	CONTACT CODE MOD. 1					MOD. 2					MOD. 3					MOD. 4														
		1	2	3	4	5	6	7	8	9	10	11	12	13	14	15	16	17	18	19	20	21	22	23	24						
85854-X123 SEE NOTE 10 LEAD FREE OPTION	E	2	2	2	2	2	2	2	2	2	2	2	2	2	2	2	2	2	2	2	2	2	2	2	3	3					
	D	2	2	2	2	2	2	2	2	2	2	2	2	2	2	2	2	2	2	2	2	2	2	2	2	3	3				
	C	2	2	2	2	2	2	2	2	2	2	2	2	2	2	2	2	2	2	2	2	2	2	2	2	2	3	3			
	B	2	2	2	2	2	2	2	2	2	2	2	2	2	2	2	2	2	2	2	2	2	2	2	2	2	2	3	3		
	A	2	2	2	2	2	2	2	2	2	2	2	2	2	2	2	2	2	2	2	2	2	2	2	2	2	2	3	3		
85854-X124 SEE NOTE 10 LEAD FREE OPTION	E	2	2	2	2	2	2	2	2	2	2	2	2	2	2	2	2	2	2	2	2	2	2	2	2	2	3	3			
	D	2	2	2	2	2	2	2	2	2	2	2	2	2	2	2	2	2	2	2	2	2	2	2	2	2	2	3	3		
	C	2	2	2	2	2	2	2	2	2	2	2	2	2	2	2	2	2	2	2	2	2	2	2	2	2	2	2	3	3	
	B	2	2	2	2	2	2	2	2	2	2	2	2	2	2	2	2	2	2	2	2	2	2	2	2	2	2	2	2	3	3
	A	2	2	2	2	2	2	2	2	2	2	2	2	2	2	2	2	2	2	2	2	2	2	2	2	2	2	2	2	2	3

mat'l code				tolerances unless otherwise specified				CUSTOMER			
ltr	ecr no.	dr	date	linear	0.X ±0.3	projection					
DG				angles	0.XX ±0.13		www.fciconnect.com				
				of	.XXX ±.051		title METRAL SIGNAL HEADER				
				of	0 ±.2	MM	4 MOD, 5 ROW PRESS-FIT				
				dr	I.BRINGARD 11/19/99		product family	METRAL			
				eng	M.STRAMSER 11/19/99	size	213				
				chr	M.STRAMSER 11/19/99	scale	85854				
				appd	M.STRAMSER 02/29/00	scale	A				
sheet index	revision sheet					code					
						22526					

REV: 200-04-10

Pro/E

code 22526

PDM: Rev:DG

STATUS:Released

Printed: Nov 11, 2009



This document is the property of, and embodies CONFIDENTIAL and PROPRIETARY information of FCJ. No part of the information shown on this document may be used in any way or be disclosed to others without the written consent of FCJ. Copyright FCJ.

METRAL P/N	CONTACT CODE MOD. 1				MOD. 2				MOD. 3				MOD. 4												
	ROW	1	2	3	4	5	6	7	8	9	10	11	12	13	14	15	16	17	18	19	20	21	22	23	24
85854-X133 SEE NOTE 10 LEAD FREE OPTION	E	2	2	2	2	2	2	2	2	2	2	2	2	1	1	2	2	2	2	2	2	2	2	2	
	D	2	2	2	2	2	2	2	2	2	2	2	2	2	2	2	2	2	2	2	2	2	2	2	1
	C	2	2	2	2	2	2	2	2	2	2	2	2	2	2	2	2	2	2	2	2	2	2	2	1
	B	2	2	2	2	2	2	2	2	2	2	2	2	2	2	2	2	2	2	2	2	2	2	2	2
	A	2	2	2	2	2	2	2	2	2	2	2	2	1	1	2	2	2	2	2	2	2	2	2	2

METRAL P/N	CONTACT CODE MOD. 1				MOD. 2				MOD. 3				MOD. 4											
	ROW	1	2	3	4	5	6	7	8	9	10	11	12	13	14	15	16	17	18	19	20	21	22	23
85854-X134 SEE NOTE 10 LEAD FREE OPTION	E	2	1	2	1	1	3	1	3	3	3	3	3	3	3	1	1	1	1	1	1	1	1	1
	D	2	1	2	1	1	3	1	3	3	3	3	3	3	3	1	1	1	1	1	1	1	1	1
	C	2	1	2	1	1	3	1	3	3	3	3	3	3	3	1	1	1	1	1	1	1	1	1
	B	2	1	2	1	1	3	1	3	3	3	3	3	3	3	1	1	1	1	1	1	1	1	1
	A	2	1	2	1	1	3	1	3	3	3	3	3	3	3	1	1	1	1	1	1	1	1	1

METRAL P/N	CONTACT CODE MOD. 1				MOD. 2				MOD. 3				MOD. 4											
	ROW	1	2	3	4	5	6	7	8	9	10	11	12	13	14	15	16	17	18	19	20	21	22	23
85854-X135 SEE NOTE 10 LEAD FREE OPTION	E	7	7	7	7	7	7	7	7	7	7	7	7	7	20	7	20	7	20	7	7	8	7	20
	D	7	7	7	7	7	7	7	7	7	7	7	7	7	20	7	20	7	20	7	7	8	7	20
	C	7	7	7	7	7	7	7	7	7	7	7	7	7	20	7	20	7	20	7	7	8	7	20
	B	7	7	7	7	7	7	7	7	7	7	7	7	7	20	7	20	7	20	7	7	8	7	20
	A	7	7	7	7	7	7	7	7	7	7	7	7	7	6	6	7	7	20	7	7	8	7	20

METRAL P/N	CONTACT CODE MOD. 1				MOD. 2				MOD. 3				MOD. 4											
	ROW	1	2	3	4	5	6	7	8	9	10	11	12	13	14	15	16	17	18	19	20	21	22	23
85854-X136 SEE NOTE 10 LEAD FREE OPTION	E	3	3	3	3	3	3	3	3	3	3	3	3	3	19	3	19	3	3	3	3	3	3	3
	D	3	3	3	3	3	3	3	3	3	3	3	3	3	19	3	19	3	3	3	3	3	3	3
	C	3	3	3	3	3	3	3	3	3	3	3	3	3	19	3	19	3	3	3	3	3	3	3
	B	3	3	3	3	3	3	3	3	3	3	3	3	3	19	3	19	3	3	3	3	3	3	3
	A	3	3	3	2	2	2	2	2	2	2	2	2	2	2	3	19	3	3	3	3	3	3	3

mat'l code		--		tolerances unless otherwise specified		CUSTOMER		www.fcjconnect.com	
lfr	ecm no.	dr	date	linear	0.X ±0.3	COPY		title	
DG				angles	0.XX ±0.13			METRAL SIGNAL HEADER	
					° ±2'			4 MOD, 5 ROW PRESS-FIT	
				dr	I.BRINGARD 11/19/99	product family		METRAL code	
				eng	M.STRAMSER 11/19/99	size	213		
				chr	M.STRAMSER 11/19/99	scale	85854		
				appd	M.STRAMSER 02/29/00	1:1	sheet 19		
sheet index	revision sheet						A		

REV: 200-04-10

1 | 2

Pro/E

3 |

cage code 22526

4

PRODUCT NUMBER
85854-XYX OR 85854-XYXX
85854-XYXLF OR 85854-XYXXLF

NOTES:

- FOR DIM A AND B SEE SHEET 2 AND UP.
- BODY MATERIAL: LIQUID CRYSTAL

POLYMER 30 % GLASS.

FLAME RETARDANT ACC. UL 94-V0.
- PIN MATERIAL:
PHOSPHOR BRONZE.
- PLATING ON PRESS-FIT TAIL:
85854-XYX IS SnPb
85854-XYXLF IS Sn (LEAD FREE)
PLATING ON CONTACT AREA CONFORMS TO PERFORMANCE LEVEL SHOWN IN TABLE BELOW.
- PRODUCT MARKING:
PART NUMBER DESIGNATION & BATCH I.D.
- ALL PRODUCTS WITH PART NUMBERS SHOWN IN SUBSEQUENT TABLES WILL BE PACKAGED IN TUBES. IF TRAY PACKAGING IS REQUIRED, A SUFFIX "P" WILL BE ADDED TO THE END OF THE PART NUMBER. EXAMPLE: XXXX-XXXP
- PRODUCT SPECIFICATION GS-12-180
APPLICATION SPECIFICATION BUS-20-073
- AFTER INSERTION INTO CIRCUIT BOARD WITH QUALIFIED TOOL.
- THE PRODUCTS WHERE THE PART NUMBER ENDS IN LF MEET THE EUROPEAN UNION DIRECTIVES AND OTHER COUNTRY REGULATIONS AS DESCRIBED IN GS-22-008.

PLATING IN CONTACT AREA		NOTES
DASH NUMBER	PERFORMANCE LEVEL	-
-PYY OR -PYYY	0.25 um GOLD MIN.	-
-NIYY OR -NIYYY	TELCORDIA CO (NXT)	-
-NSYY OR -NSYYY	TELCORDIA UE (NXT)	-
-IYY OR -IYYY	TELCORDIA CO	-
-2YY OR -2YYY	TELECOM CLASS	-
-3YY OR -3YYY	IEC CLASS I	-
-5YY OR -5YYY	TELCORDIA UE	-
-NIYYLF OR -NIYYXLF	TELCORDIA CO (NXT) IEC CLASS I	SEE NOTE 9
-NSYYLF OR -NSYYXLF	TELCORDIA UE (NXT)	SEE NOTE 9
-IYYLF OR -IYYXLF	TELCORDIA CO IEC CLASS I	SEE NOTE 9
-2YYLF OR -2YYXLF	TELECOM CLASS	SEE NOTE 9
-5YYLF OR -5YYXLF	TELCORDIA UE	SEE NOTE 9

⑩ FOR LEAD FREE PART NUMBERS ADD AN "LF" SUFFIX.
EXAMPLE: 85854-X01LF

ALL PRODUCTS EXCEPT THOSE WITH PART NUMBERS CONTAINING (DRAWING NO.)-NI--- OR (DRAWING NO.)-N5--- WILL WITHSTAND EXPOSURE TO 260°C FOR 60 SECONDS IN A CONVECTION, INFRA-RED OR VAPOR PHASE REFLOW OVEN. PART NUMBERS (DRAWING NO.)-NI--- AND (DRAWING NO.)-N5--- WILL NOT WITHSTAND REFLOW AND Au CONTACT SURFACE OF THE CONTACTS SHALL BE EXPOSED TO A MAXIMUM 140°C FOR NO LONGER THAN 15 SECONDS IN A WAVE SOLDER APPLICATION.



This document is the property of, and embodies CONFIDENTIAL and PROPRIETARY information of FCJ. No part of the information shown on this document may be used in any way or disclosed to others without the written consent of FCJ. Copyright FCJ.

mat'l code		--		tolerances unless otherwise specified		CUSTOMER		www.fcjconnect.com	
ltr	ecm no.	dr	date	linear	0.X ±0.3	projection	title METRAL SIGNAL HEADER		
DG					.XXX ±.051	⊕	4 MOD, 5 ROW PRESS-FIT		
				angles	0° ±2°	MM	product family	METRAL	code
				dr	I.BRINGARD 11/19/99	scale	size	dwg no	213
				eng	M.STRAMSER 11/19/99	1:1	A	85854	sheet
				chr	M.STRAMSER 11/19/99				20
				appd	M.STRAMSER 02/29/00				
sheet index	revision sheet								

REV: 2008-04-08

1 | 2

Pro/E

3 |

cage code 22526

4

PDM: Rev:DG

STATUS:Released

Printed: Nov 11, 2009