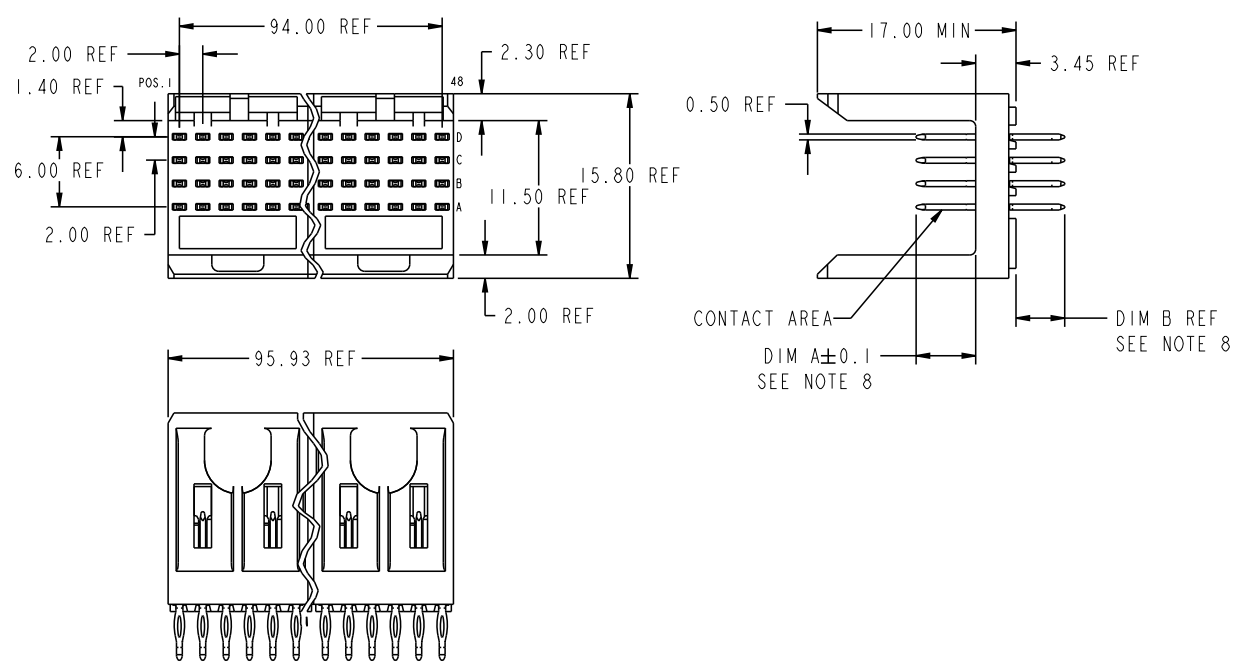




This document is the property of and embodies CONFIDENTIAL and PROPRIETARY information of FCI. No part of the information shown on this document may be used in any way or disclosed to others without the written consent of FCI. Copyright FCI.

PRODUCT NUMBER
SEE TABLE



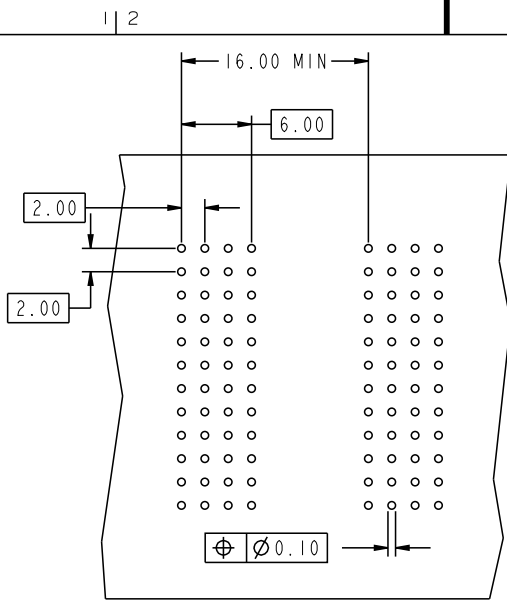
mat'l code			tolerances unless otherwise specified				CUSTOMER		FCI												
ltr	ecp no.	dr	date	linear	0. XX ± 0.13			COPY		www.fciconnect.com											
AP	V06-0569	DCH	2006-06-13		0. XX ± 0.13			projection	title												
AR	DG07-0487	Cen h	12/05/07		. XXX ± .051				METRAL SIGNAL HEADER 8 MOD, 4 ROW PRESS-FIT												
AS	DG09-0256	TER	2009-08-19	angles	$\theta^{\circ} \pm 2^{\circ}$				product family METRAL code												
-	-	-	-	dr	T. BRUNGARD	11/19/99		MM		size		213									
AL	V03-1321	DAI	01/15/04	engr	M. STRAWSER	11/19/99		scale		dwg no		sheet									
AM	V04-0794	TAB	08/13/04	chr	M. STRAWSER	11/19/99		2:1		88924		of 13									
AN	V05-0370	DPU	06/02/05	oppd	M. STRAWSER	02/29/00															
sheet index	revision sheet	1	2	3	4	5	6	7	8	9	10	11	12	13	14	15	16	17	18	19	20

REV E - 2006-04-18

Pro/E 3 PDM: Rev:AS STATUS: Released Printed: Sep 16, 2009



This document is the property of and embodies CONFIDENTIAL and PROPRIETARY information of FCI. No part of the information shown on this document may be used in any way or disclosed to others without the written consent of FCI. Copyright FCI.



REQUIRED PC BOARD LAYOUT
COMPONENT SIDE

SEE PRINT 58351 FOR
ADDITIONAL PCB INFORMATION

KEY		
CODE	DIMENSIONS	
	DIM "A" MATE	DIM "B" TAIL
1	5.00	4.30
2	5.75	4.30
3	6.50	4.30
4	7.25	4.30
5	5.00	13.60
6	5.75	13.60
7	6.50	13.60
13	8.25	4.30
14	8.25	13.60
19	8.00	4.30
20	8.00	13.60
22	5.00	12.10
25	5.75	15.60
40	5.00	15.60

mat'l code		--		tolerances unless otherwise specified		CUSTOMER		FCI		www.fciconnect.com	
lfr	ecm no.	dr	date	linear	0.X ±0.3	projection	COPY	title	METRAL SIGNAL HEADER		
AS					0.XX ±0.13	MM		8 MOD, 4 ROW PRESS-FIT			
				angles	.XXX ±.051	MM		product family	METRAL		
				dr	Ø ±2°	MM		size	dwg no	code	213
				engr	T. BRUNGARD 11/19/99	MM		A	88924	sheet	2
				chr	M. STRAWSER 11/19/99	MM	scale				
				appd	M. STRAWSER 02/29/00	MM	2:1				
sheet index	revision sheet										
								code code	22526		

PDM: Rev:AS

STATUS:Released

Printed: Sep 16, 2009



This document is the property of and embodies CONFIDENTIAL and PROPRIETARY information of FCI. No part of the information shown on this document may be used in any way or disclosed to others without the written consent of FCI. Copyright FCI.

PRODUCT NUMBER	DESCRIPTION	PLATING IN PRESS FIT TAIL AREA	PERFORMANCE LEVEL OF PLATING IN CONTACT AREA
88924-N1YY	STANDARD	TIN LEAD	TELCORDIA CO (NXT)
88924-N5YY	STANDARD	TIN LEAD	TELCORDIA UE (NXT)
88924-1YY	STANDARD	TIN LEAD	TELCORDIA CO
88924-2YY	STANDARD	TIN LEAD	TELECOM CLASS
88924-3YY	STANDARD	TIN LEAD	IEC CLASS I
88924-5YY	STANDARD	TIN LEAD	TELCORDIA UE
88924-N1YYLF	LEAD FREE	TIN	TELCORDIA CO (NXT), IEC CLASS I, SEE NOTES 9 AND 10
88924-N5YYLF	LEAD FREE	TIN	TELCORDIA UE (NXT) SEE NOTES 9 AND 10
88924-1YYLF	LEAD FREE	TIN	TELCORDIA CO, IEC CLASS I, SEE NOTES 9 AND 10
88924-2YYLF	LEAD FREE	TIN	TELECOM CLASS, SEE NOTES 9 AND 10
88924-5YYLF	LEAD FREE	TIN	TELCORDIA UE, SEE NOTES 9 AND 10

NOTES:

1. FOR DIM A, AND B SEE SHEET 2 AND UP.
2. BODY MATERIAL: LIQUID CRYSTAL POLYMER 30 % GLASS. FLAME RETARDANT ACC. UL 94-V0.
3. PIN MATERIAL: PHOSPHOR BRONZE.
4. PLATING ON PRESS-FIT AREA: SEE PRODUCT NUMBER TABLE. PLATING ON CONTACT AREA CONFORMS TO PERFORMANCE LEVEL SHOWN IN TABLE ON SHEETS.
5. PRODUCT MARKING: PART NUMBER DESIGNATION & BATCH I.D.
6. ALL PRODUCTS WITH PART NUMBERS SHOWN IN SUBSEQUENT TABLES WILL BE PACKAGED IN TUBES. IF TRAY PACKAGING IS REQUIRED, A SUFFIX "P" WILL BE ADDED TO THE END OF THE PART NUMBER. EXAMPLE: XXXXX-XXXP OR XXXXX-XXXPLF
7. PRODUCT SPECIFICATION: GS-12-180 APPLICATION SPECIFICATION: BUS-20-073
8. AFTER INSERTION INTO BOARD WITH QUALIFIED TOOLING.
9. THE PRODUCTS WHERE THE PART NUMBER ENDS IN LF MEET THE EUROPEAN UNION DIRECTIVE AND OTHER COUNTRY REGULATIONS AS DESCRIBED IN GS-12-008.
10. ALL THE PRODUCTS EXCEPT THOSE WITH PART NUMBERS CONTAINING 88924-N1---OR 88924-N5---WILL WITHSTAND EXPOSURE TO 260 DEGREES C FOR 60 SECONDS IN A CONVECTION, INFRARED OR VAPOR PHASE REFLOW OVEN. PART NUMBERS 88924-N1---AND 88924-N5--- WILL NOT WITHSTAND REFLOW AND THE Au CONTACT SURFACE OF THE CONTACTS SHALL BE EXPOSED TO A MAXIMUM 140 DEGREES C FOR NO LONGER THAN 15 SECONDS IN A WAVE SOLDER APPLICATION.

mat'l code		SEE NOTES	tolerances unless otherwise specified	CUSTOMER	www.fciconnect.com	
lfr	ecn no.	dr	date	COPY		
AS					title METRAL SIGNAL HEADER 8 MOD, 4 ROW PRESS-FIT	
		linear			product family METRAL code 213	
		angles			size dwg no 88924 sheet 3	
		dr	T. BRUNGARD 11/19/99		scale 11:1	
		engr	x. xxxxxx mm/dd/yy		code 22526	
		chr	M. STRAWSER 11/19/99		4	
		appd	M. STRAWSER 02/29/00		Pro/E	
sheet index	revision sheet					

1 | 2

3 |

4


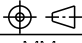
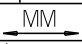
METRAL P/N	ROW	CONTACT CODE MOD. 1				MOD. 2				MOD. 3				MOD. 4				MOD. 5				MOD. 6				MOD. 7				MOD. 8																				
		1	2	3	4	5	6	7	8	9	10	11	12	13	14	15	16	17	18	19	20	21	22	23	24	25	26	27	28	29	30	31	32	33	34	35	36	37	38	39	40	41	42	43	44	45	46	47	48	
88924-X41 AND 88924-X41LF	D	19	3	3	3	3	3	3	3	3	3	3	3	3	3	3	3	3	3	3	3	3	3	3	3	3	3	3	3	3	3	3	3	3	3	3	3	3	3	3	3	3	3	3	3	3	19			
	C	3	3	3	3	3	3	3	3	3	3	3	3	3	3	3	3	3	3	3	3	3	3	3	3	3	3	3	3	3	3	3	3	3	3	3	3	3	3	3	3	3	3	3	3	3	3	3	3	3
	A	19	3	3	3	3	3	3	3	3	3	3	3	3	3	3	3	3	3	3	3	3	3	3	3	3	3	3	3	3	3	3	3	3	3	3	3	3	3	3	3	3	3	3	3	3	3	3	19	

METRAL P/N	ROW	CONTACT CODE MOD. 1				MOD. 2				MOD. 3				MOD. 4				MOD. 5				MOD. 6				MOD. 7				MOD. 8																					
		1	2	3	4	5	6	7	8	9	10	11	12	13	14	15	16	17	18	19	20	21	22	23	24	25	26	27	28	29	30	31	32	33	34	35	36	37	38	39	40	41	42	43	44	45	46	47	48		
88924-X42 AND 88924-X42LF	D	25	25	25	25	25	25	25	25	25	25	25	25	25	25	25	25	25	25	25	25	25	25	25	25	25	25	25	25	25	25	25	25	25	25	25	25	25	25	25	25	25	25	25	25	25	25	25	25		
	C	25	25	25	25	25	25	25	25	25	25	25	25	25	25	25	25	25	25	25	25	25	25	25	25	25	25	25	25	25	25	25	25	25	25	25	25	25	25	25	25	25	25	25	25	25	25	25	25	25	25
	A	25	25	25	25	25	25	25	25	25	25	25	25	25	25	25	25	25	25	25	25	25	25	25	25	25	25	25	25	25	25	25	25	25	25	25	25	25	25	25	25	25	25	25	25	25	25	25	25	25	25

METRAL P/N	ROW	CONTACT CODE MOD. 1				MOD. 2				MOD. 3				MOD. 4				MOD. 5				MOD. 6				MOD. 7				MOD. 8																				
		1	2	3	4	5	6	7	8	9	10	11	12	13	14	15	16	17	18	19	20	21	22	23	24	25	26	27	28	29	30	31	32	33	34	35	36	37	38	39	40	41	42	43	44	45	46	47	48	
88924-X43 AND 88924-X43LF	D	1	1	1	1	1	1	1	1	1	1	1	1	1	1	1	1	1	1	1	1	1	1	1	1	1	1	1	1	1	1	1	1	1	1	1	1	1	1	1	1	1	1	1	1	1	1	1	1	
	C	1	1	1	1	1	1	1	1	1	1	1	1	1	1	1	1	1	1	1	1	1	1	1	1	1	1	1	1	1	1	1	1	1	1	1	1	1	1	1	1	1	1	1	1	1	1	1	1	1
	A	1	1	1	1	1	1	1	1	2	1	2	1	2	1	1	1	1	1	1	1	1	1	1	1	1	1	1	1	1	1	1	1	1	1	1	1	1	1	1	1	1	1	1	1	1	1	1	1	1

METRAL P/N	ROW	CONTACT CODE MOD. 1				MOD. 2				MOD. 3				MOD. 4				MOD. 5				MOD. 6				MOD. 7				MOD. 8																					
		1	2	3	4	5	6	7	8	9	10	11	12	13	14	15	16	17	18	19	20	21	22	23	24	25	26	27	28	29	30	31	32	33	34	35	36	37	38	39	40	41	42	43	44	45	46	47	48		
88924-X44 AND 88924-X44LF	D	5	5	5	5	5	5	5	5	5	5	5	5	5	5	5	5	5	5	5	5	5	5	5	5	5	5	5	5	5	5	5	5	5	5	5	5	5	5	5	5	5	5	5	5	5	5	5	5	5	
	C	5	5	5	5	5	5	5	5	5	5	5	5	5	5	5	5	5	5	5	5	5	5	5	5	5	5	5	5	5	5	5	5	5	5	5	5	5	5	5	5	5	5	5	5	5	5	5	5	5	5
	A	5	5	5	5	5	5	5	5	5	5	5	5	5	5	5	5	5	5	5	5	5	5	5	5	5	5	5	5	5	5	5	5	5	5	5	5	5	5	5	5	5	5	5	5	5	5	5	5	5	5

METRAL P/N	ROW	CONTACT CODE MOD. 1				MOD. 2				MOD. 3				MOD. 4				MOD. 5				MOD. 6				MOD. 7				MOD. 8																					
		1	2	3	4	5	6	7	8	9	10	11	12	13	14	15	16	17	18	19	20	21	22	23	24	25	26	27	28	29	30	31	32	33	34	35	36	37	38	39	40	41	42	43	44	45	46	47	48		
88924-X45 AND 88924-X45LF	D	1	1	1	1	1	1	1	1	1	1	1	1	1	1	1	1	1	1	1	1	1	1	1	1	1	1	1	1	1	1	1	1	1	1	1	1	1	1	1	1	1	1	1	1	1	1	1	1	1	
	C	1	1	1	1	1	1	1	1	1	1	1	1	1	1	1	1	1	1	1	1	1	1	1	1	1	1	1	1	1	1	1	1	1	1	1	1	1	1	1	1	1	1	1	1	1	1	1	1	1	1
	A	3	3	1	1	1	1	1	1	1	1	1	1	1	1	1	1	1	1	1	1	1	1	1	1	1	1	1	1	1	1	1	1	1	1	1	1	1	1	1	1	1	1	1	1	1	1	1	1	3	

mat'l code		SEE NOTES		tolerances unless otherwise specified		CUSTOMER		 www.fcjconnect.com	
ltr	ecn no.	dr	date	linear	.xx ±.01	projection	COPY	title	METRAL SIGNAL HEADER
AS				angles	.xxx ±.005			8 MOD, 4 ROW PRESS-FIT	
					.xxx ±.0020			product family	METRAL
				dr	T. BRUNGARD 11/19/99	scale	11:1	size	A
				eng	M. STRAWSER 11/19/99	sheet index		dwg no	88924
				chr	M. STRAWSER 11/19/99	revision		sheet	12
				oppd	M. STRAWSER 02/29/00	sheet		code	22526

This document is the property of and embodies
 CONFIDENTIAL and PROPRIETARY information of FCJ.
 No part of the information shown on this
 document may be used in any way or disclosed
 to others without the written consent of FCJ.
 Copyright FCJ.

REV E - 2004-04-18



This document is the property of and embodies CONFIDENTIAL and PROPRIETARY information of FCJ. No part of the information shown on this document may be used in any way or disclosed to others without the written consent of FCJ. Copyright FCJ.

METRAL P/N	ROW	CONTACT CODE MOD. 1				MOD. 2				MOD. 3				MOD. 4				MOD. 5				MOD. 6				MOD. 7				MOD. 8																				
		1	2	3	4	5	6	7	8	9	10	11	12	13	14	15	16	17	18	19	20	21	22	23	24	25	26	27	28	29	30	31	32	33	34	35	36	37	38	39	40	41	42	43	44	45	46	47	48	
88924-X46	D	1	1	3	1	1	1	1	1	1	3	1	1	1	1	3	1	1	1	1	1	1	1	1	1	1	1	1	1	1	1	1	1	1	1	1	1	1	1	3	3	1	1	1	3	3	1	1	1	1
	C	1	1	3	1	1	1	1	1	1	3	1	1	1	1	3	1	1	1	1	1	1	1	1	1	1	1	1	1	1	1	1	1	1	1	1	1	1	1	1	3	3	1	1	1	3	3	1	1	1
88924-X46LF	B	1	1	1	1	1	3	1	1	1	1	3	1	1	1	1	3	1	1	1	1	1	1	1	1	1	1	1	1	1	1	1	1	1	1	1	1	1	1	1	1	1	1	1	1	1	1	1	1	1
	A	1	1	1	1	1	3	1	1	1	1	3	1	1	1	1	3	1	1	1	1	1	1	1	1	1	1	1	1	1	1	1	1	1	1	1	1	1	1	1	1	1	1	1	1	1	1	1	1	1

METRAL P/N	ROW	CONTACT CODE MOD. 1				MOD. 2				MOD. 3				MOD. 4				MOD. 5				MOD. 6				MOD. 7				MOD. 8																					
		1	2	3	4	5	6	7	8	9	10	11	12	13	14	15	16	17	18	19	20	21	22	23	24	25	26	27	28	29	30	31	32	33	34	35	36	37	38	39	40	41	42	43	44	45	46	47	48		
88924-X47	D	1	1	3	1	1	1	1	1	3	1	1	1	1	3	1	1	1	1	1	1	1	1	1	1	1	1	1	1	1	1	1	1	1	1	1	1	1	1	1	1	1	1	1	1	1	1	1	1		
	C	1	1	3	1	1	1	1	1	3	1	1	1	1	3	1	1	1	1	1	1	1	1	1	1	1	1	1	1	1	1	1	1	1	1	1	1	1	1	1	1	1	1	1	1	1	1	1	1	1	1
88924-X47LF	B	1	1	1	1	1	3	1	1	1	1	3	1	1	1	1	3	1	1	1	1	1	1	1	1	1	1	1	1	1	1	1	1	1	1	1	1	1	1	1	1	1	1	1	1	1	1	1	1	1	1
	A	1	1	1	1	1	3	1	1	1	1	3	1	1	1	1	3	1	1	1	1	1	1	1	1	1	1	1	1	1	1	1	1	1	1	1	1	1	1	1	1	1	1	1	1	1	1	1	1	1	1

mat'l code				SEE NOTES				tolerances unless otherwise specified				CUSTOMER COPY				 www.fcjconnect.com			
lfr	ecm no.	dr	date									projection				title METRAL SIGNAL HEADER			
AS				linear												8 MOD, 4 ROW PRESS-FIT			
				angles												product family METRAL code 213			
				dr T. BRUNGARD 11/19/99								size A				dwg no 88924 sheet 13			
				engr S. XXXXXX mm/dd/yy								scale 11:1							
				chr M. STRAWSER 11/19/99															
				oppd M. STRAWSER 02/29/00															
sheet index		revision sheet														code code 22526			

REV E - 2006-04-18

PDM: Rev:AS STATUS:Released Printed: Sep 16, 2009