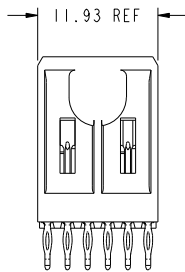
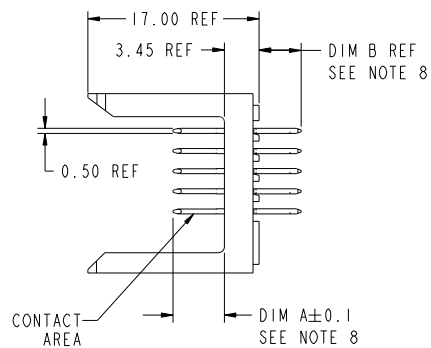
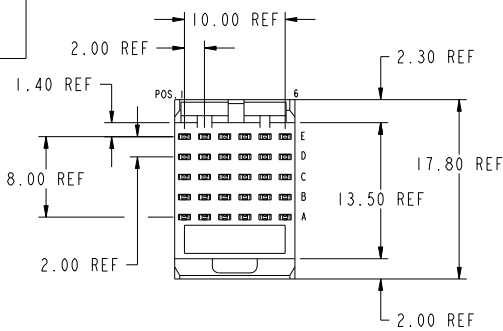


PRODUCT NUMBER
85674-XYX OR 85674-XYXX
85674-XYXLF OR 85674-XYXXLF



This document is the property of, and embodies
CONFIDENTIAL and PROPRIETARY information of FCI.
No part of the information shown on this
document may be used in any way or
reproduced in any form without the
written consent of FCI.
Copyright FCI.

mat'l code		SEE NOTES		tolerances unless otherwise specified		CUSTOMER		www.fciconnect.com	
itr	ecn no.	dr	date	linear	0.X ±0.3	projection	COPY	title	METRAL SIGNAL HEADER
CC	V06-0569	DCH	2006-06-12		0.XX ±0.13			I MOD, 5 ROW PRESS-FIT	
CD	DG07-0409	Cenh	10/18/07	angles	.XXX ±.051			product family	METRAL
CE	DG07-0487	Cenh	12/04/07		0 ±.2			size	213
CF	DG08-0248	Cenh	09/26/08	dr	I.BRINGARD 11/19/99			dwg no	85674
CG	DG08-0303	Cenh	10/30/08	eng	M.STRAMSER 11/19/99			code	1 of 10
CH	DG09-0073	Cenh	03/05/09	chr	M.STRAMSER 11/19/99	scale	2:1		
-	-	-	-	appd	M.STRAMSER 02/29/00				
sheet	revision	CH	CH	CH	CH	CH	CH	CH	CH
index	sheet	1	2	3	4	5	6	7	8

Pro/E

cage code 22526

PDM: Rev:CH

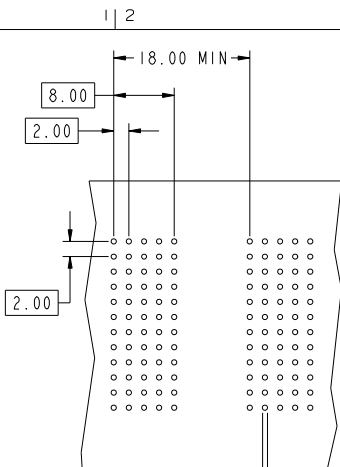
STATUS:Released

Printed: May 16, 2009



This document is the property of, and embodies CONFIDENTIAL and PROPRIETARY information of FCI. No part of the information shown on this document may be used in any way or published or transmitted in any form or by any means without the written consent of FCI. Copyright FCI.

REV: 2008-04-08



REQUIRED PC BOARD LAYOUT
COMPONENT SIDE
SEE PRINT 58351 FOR
ADDITIONAL PCB INFORMATION

KEY (SIGNAL PRESS-FIT)		
CODE	DIMENSIONS	
	DIM "A" MATE	DIM "B" TAIL
1	5.00	4.30
2	5.75	4.30
3	6.50	4.30
4	7.25	4.30
5	5.00	13.60
6	5.75	13.60
7	6.50	13.60
8	7.25	13.60
11	6.50	17.00
19	8.00	4.30
20	8.00	13.60
21	8.00	17.00
22	5.00	12.10
29	8.00	14.60
30	5.00	12.90
31	5.75	12.90
40	5.00	15.60
41	6.50	15.60
49	5.75	15.10
52	8.00	15.10
59	5.00	11.80
61	6.50	11.80
64	5.75	14.90
65	5.00	16.30
67	7.25	16.30

mat'l code				tolerances unless otherwise specified		CUSTOMER		FCI		www.fciconnect.com	
itr	ecm no.	dr	date	linear	0.X ±0.3	projection	COPY		title		
CH					0.XX ±0.13	MM	A		METRAL SIGNAL HEADER		
				angles	.XXX ±.051	scale	3:2		I MOD, 5 ROW PRESS-FIT		
				dr	0° ±2°				product family	METRAL	
				eng	I.BRINGARD 11/19/99				size	85674	code
				chr	M.STRAMSER 11/19/99				sheet	213	2
				appd	M.STRAMSER 02/29/00				sheet	2	
sheet index	revision sheet										

Pro/E

cage code 22526

PDM: Rev:CH

STATUS:Released

Printed: May 16, 2009



This document is the property of, and embodies CONFIDENTIAL and PROPRIETARY information of FCI. No part of the information shown on this document may be used in any way or be reproduced without the written consent of FCI. Copyright FCI.

REV: 2008-04-08

METRAL P/N	ROW	CONTACT MOD.	CODE	MOD.	CODE
85674-X01	E	1	2	3	4
	D	1	1	1	1
	C	1	1	2	2
85674-X01LF	B	1	1	1	1
	A	1	1	1	1

METRAL P/N	ROW	CONTACT MOD.	CODE	MOD.	CODE
85674-X02	E	5	5	5	5
	D	5	5	5	5
	C	5	5	6	6
85674-X02LF	B	5	5	5	5
	A	5	5	5	5

METRAL P/N	ROW	CONTACT MOD.	CODE	MOD.	CODE
85674-X03	E	1	1	1	1
	D	1	1	1	1
	C	4	4	4	4
85674-X03LF	B	1	1	1	1
	A	1	1	1	1

METRAL P/N	ROW	CONTACT MOD.	CODE	MOD.	CODE
85674-X04	E	1	1	1	1
	D	1	1	1	1
	C	8	8	8	8
85674-X04LF	B	1	1	1	1
	A	1	1	1	1

METRAL P/N	ROW	CONTACT MOD.	CODE	MOD.	CODE
85674-X05	E	8	8	8	8
	D	8	8	8	8
	C	8	8	8	8
85674-X05LF	B	5	5	5	5
	A	5	5	5	5

METRAL P/N	ROW	CONTACT MOD.	CODE	MOD.	CODE
85674-X06	E	5	5	5	5
	D	5	5	5	5
	C	5	5	5	5
85674-X06LF	B	5	5	8	8
	A	5	5	8	8

METRAL P/N	ROW	CONTACT MOD.	CODE	MOD.	CODE
85674-X07	E	5	5	5	5
	D	5	5	5	5
	C	8	8	8	8
85674-X07LF	B	5	5	5	5
	A	5	5	5	5

METRAL P/N	ROW	CONTACT MOD.	CODE	MOD.	CODE
85674-X08	E	8	8	8	8
	D	8	8	8	8
	C	8	8	8	8
85674-X08LF	B	8	8	8	8
	A	8	8	8	8

METRAL P/N	ROW	CONTACT MOD.	CODE	MOD.	CODE
85674-X09	E	5	5	5	5
	D	5	5	5	5
	C	5	5	5	5
85674-X09LF	B	5	5	5	8
	A	5	5	5	8

METRAL P/N	ROW	CONTACT MOD.	CODE	MOD.	CODE
85674-X10	E	2	2	2	2
	D	2	2	2	2
	C	2	2	2	2
85674-X10LF	B	2	-	-	-
	A	2	-	-	-

METRAL P/N	ROW	CONTACT MOD.	CODE	MOD.	CODE
85674-X11	E	6	6	6	6
	D	6	6	6	6
	C	6	6	6	6
85674-X11LF	B	6	6	6	6
	A	6	6	6	6

METRAL P/N	ROW	CONTACT MOD.	CODE	MOD.	CODE
85674-X12	E	3	2	2	2
	D	3	2	2	2
	C	3	2	2	2
85674-X12LF	B	3	2	2	2
	A	3	2	2	2

METRAL P/N	ROW	CONTACT MOD.	CODE	MOD.	CODE
85674-X13	E	1	1	-	1
	D	1	1	-	1
	C	1	1	-	-
85674-X13LF	B	1	1	-	1
	A	1	1	-	1

METRAL P/N	ROW	CONTACT MOD.	CODE	MOD.	CODE
85674-X14	E	2	2	4	9
	D	2	2	4	9
	C	2	2	4	9
85674-X14LF	B	2	2	4	9
	A	2	2	4	9

METRAL P/N	ROW	CONTACT MOD.	CODE	MOD.	CODE
85674-X15	E	4	9	4	9
	D	4	9	4	9
	C	4	9	4	9
85674-X15LF	B	4	9	4	9
	A	4	9	4	9

METRAL P/N	ROW	CONTACT MOD.	CODE	MOD.	CODE
85674-X16	E	2	2	2	2
	D	1	3	2	3
	C	1	3	2	3
85674-X16LF	B	1	3	2	3
	A	1	3	2	3

METRAL P/N	ROW	CONTACT MOD.	CODE	MOD.	CODE
85674-X17	E	2	2	2	2
	D	2	2	2	2
	C	2	2	2	2
85674-X17LF	B	2	2	2	2
	A	2	2	2	2

METRAL P/N	ROW	CONTACT MOD.	CODE	MOD.	CODE
85674-X18	E	7	7	7	7
	D	7	7	7	7
	C	7	7	7	7
85674-X18LF	B	-	7	7	7
	A	-	7	7	7

METRAL P/N	ROW	CONTACT MOD.	CODE	MOD.	CODE
85674-X19	E	3	3	3	3
	D	3	3	3	3
	C	3	3	3	3
85674-X19LF	B	-	3	3	3
	A	-	3	3	3

METRAL P/N	ROW	CONTACT MOD.	CODE	MOD.	CODE
85674-X21	E	1	9	2	4
	D	1	9	2	4
	C	1	9	2	4
85674-X21LF	B	1	9	2	4
	A	1	9	2	4

METRAL P/N	ROW	CONTACT MOD.	CODE	MOD.	CODE
85674-X22	E	7	7	7	7
	D	7	7	7	7
	C	7	7	7	7
85674-X22LF	B	7	7	7	7
	A	7	7	7	7

METRAL P/N	ROW	CONTACT MOD.	CODE	MOD.	CODE
85674-X23	E	7	7	7	7
	D	7	7	7	7
	C	7	7	7	7
85674-X23LF	B	7	7	7	7
	A	7	7	7	7

METRAL P/N	ROW	CONTACT MOD.	CODE	MOD.	CODE
85674-X24	E	2	2	2	2
	D	2	2	2	2
	C	2	2	2	2
85674-X24LF	B	2	2	2	2
	A	2	2	2	2

mat'l code				tolerances unless otherwise specified				CUSTOMER		FCI www.fciconnect.com	
lir	ecn no.	dr	date	linear	0.X ±0.3	projection	COPY		title		METRAL SIGNAL HEADER 1 MOD, 5 ROW PRESS-FIT
CH				angles	0.XX ±0.13	⊕	product family		code		
				dr	.XX ±.051	MM	size		METRAL		213
				eng	0" ±.2"	MM	scale		85674		sheet
				chr	I.BRINGARD 11/19/99	1:1	A				3
				appd	M.STRAMSER 11/19/99						
sheet index	revision sheet										

1 | 2

Pro/E

3 |

cage code 22526

4



This document is the property of, and embodies CONFIDENTIAL and PROPRIETARY information of FCJ. No part of the information shown on this document may be used in any way or disclosed to others without the written consent of FCJ. Copyright FCJ.

REV: 2008-04-08

METRAL P/N	ROW	CONTACT CODE MOD. I				
85674-X49	E	3	3	3	3	3
	D	3	3	3	3	3
	C	-	-	3	3	3
85674-X49LF	B	-	-	-	3	3
	A	3	3	-	-	3

METRAL P/N	ROW	CONTACT CODE MOD. I				
85674-X50	E	3	3	3	3	3
	D	3	3	1	3	3
	C	3	3	1	3	3
85674-X50LF	B	3	3	3	3	3
	A	3	3	3	3	3

METRAL P/N	ROW	CONTACT CODE MOD. I				
85674-X51	E	5	5	5	5	5
	D	6	6	6	6	6
	C	6	6	6	5	5
85674-X51LF	B	6	5	5	5	5
	A	5	5	5	5	5

METRAL P/N	ROW	CONTACT CODE MOD. I				
85674-X52	E	1	1	1	1	1
	D	1	1	1	1	1
	C	3	1	1	1	3
85674-X52LF	B	1	1	1	1	1
	A	1	1	1	1	1

METRAL P/N	ROW	CONTACT CODE MOD. I				
85674-X53	E	3	3	3	3	3
	D	2	2	2	2	3
	C	2	2	2	1	1
85674-X53LF	B	2	2	2	1	1
	A	3	2	3	1	1

METRAL P/N	ROW	CONTACT CODE MOD. I				
85674-X54	E	2	2	2	2	2
	D	2	2	1	1	3
	C	2	2	1	1	3
85674-X54LF	B	2	2	1	1	3
	A	3	2	1	1	1

METRAL P/N	ROW	CONTACT CODE MOD. I				
85674-X55	E	1	3	1	1	1
	D	1	3	1	1	1
	C	1	3	1	1	1
85674-X55LF	B	1	3	1	1	1
	A	1	3	1	1	1

METRAL P/N	ROW	CONTACT CODE MOD. I				
85674-X56	E	5	6	6	6	6
	D	5	6	6	6	6
	C	5	6	6	6	6
85674-X56LF	B	5	6	6	6	6
	A	5	6	6	6	6

METRAL P/N	ROW	CONTACT CODE MOD. I				
85674-X57	E	5	6	6	6	6
	D	5	6	6	6	6
	C	5	6	6	6	6
85674-X57LF	B	6	6	6	6	6
	A	6	6	6	6	6

METRAL P/N	ROW	CONTACT CODE MOD. I				
85674-X58	E	1	2	2	2	2
	D	1	2	2	2	2
	C	1	2	2	2	2
85674-X58LF	B	2	2	2	2	2
	A	2	2	2	2	2

METRAL P/N	ROW	CONTACT CODE MOD. I				
85674-X59	E	3	3	3	1	3
	D	3	3	1	3	3
	C	3	3	1	3	3
85674-X59LF	B	3	1	3	3	3
	A	3	3	3	3	3

METRAL P/N	ROW	CONTACT CODE MOD. I				
85674-X60	E	-	1	1	1	-
	D	-	1	1	1	-
	C	-	1	1	1	-
85674-X60LF	B	-	1	1	1	-
	A	-	1	1	1	-

METRAL P/N	ROW	CONTACT CODE MOD. I				
85674-X61	E	3	1	3	3	3
	D	3	1	3	3	3
	C	3	1	3	3	3
85674-X61LF	B	3	1	3	3	3
	A	3	1	3	3	3

METRAL P/N	ROW	CONTACT CODE MOD. I				
85674-X62	E	2	2	2	1	2
	D	2	2	2	1	2
	C	2	2	2	1	2
85674-X62LF	B	2	2	2	1	2
	A	1	2	2	1	2

METRAL P/N	ROW	CONTACT CODE MOD. I				
85674-X63	E	2	2	2	2	1
	D	2	2	2	2	1
	C	1	2	2	2	1
85674-X63LF	B	2	2	2	2	1
	A	1	2	2	1	1

METRAL P/N	ROW	CONTACT CODE MOD. I				
85674-X64	E	2	1	2	2	1
	D	2	2	2	2	1
	C	2	2	1	1	1
85674-X64LF	B	2	2	2	2	1
	A	2	2	1	1	1

METRAL P/N	ROW	CONTACT CODE MOD. I				
85674-X65	E	3	3	3	3	3
	D	3	3	3	3	3
	C	3	3	3	3	3
85674-X65LF	B	3	3	3	3	3
	A	3	3	3	3	3

METRAL P/N	ROW	CONTACT CODE MOD. I				
85674-X66	E	2	2	2	2	2
	D	2	2	2	2	2
	C	2	2	2	2	2
85674-X66LF	B	2	2	2	2	2
	A	2	2	2	2	2

METRAL P/N	ROW	CONTACT CODE MOD. I				
85674-X67	E	2	2	2	2	2
	D	2	1	2	2	1
	C	2	2	2	2	2
85674-X67LF	B	2	2	2	2	2
	A	2	2	2	2	2

METRAL P/N	ROW	CONTACT CODE MOD. I				
85674-X68	E	7	7	7	7	8
	D	7	7	7	7	8
	C	7	7	7	7	8
85674-X68LF	B	7	7	7	7	8
	A	7	7	7	7	8

METRAL P/N	ROW	CONTACT CODE MOD. I				
85674-X69	E	6	6	6	6	6
	D	6	6	6	6	6
	C	6	6	6	6	6
85674-X69LF	B	6	6	6	6	6
	A	6	6	6	6	6

METRAL P/N	ROW	CONTACT CODE MOD. I				
85674-X70	E	1	9	2	4	4
	D	1	9	2	4	4
	C	1	9	2	4	4
85674-X70LF	B	1	9	2	4	4
	A	1	9	2	4	4

METRAL P/N	ROW	CONTACT CODE MOD. I				
85674-X71	E	2	2	2	2	1
	D	2	2	2	2	1
	C	2	2	2	2	1
85674-X71LF	B	2	2	2	2	1
	A	2	2	2	2	1

METRAL P/N	ROW	CONTACT CODE MOD. I				
85674-X72	E	6	6	6	6	6
	D	6	6	6	6	6
	C	2	6	6	6	6
85674-X72LF	B	6	6	6	6	6
	A	6	6	6	6	6

mat'l code		tolerances unless otherwise specified		CUSTOMER		FCJ	
thr	ecn no.	dr	date	linear	0.X ±0.3	projection	title
CH				angles	0.XX ±0.13		METRAL SIGNAL HEADER
				dr	.XXX ±.051		I MOD, 5 ROW PRESS-FIT
				eng	° ±2"		product family
				chr	T.BRINGARD 11/19/99		METRAL
				appd	M.STRAWER 11/19/99	scale	code
					M.STRAWER 11/19/99	1:1	213
sheet index	revision sheet				M.STRAWER 02/29/00		sheet 5

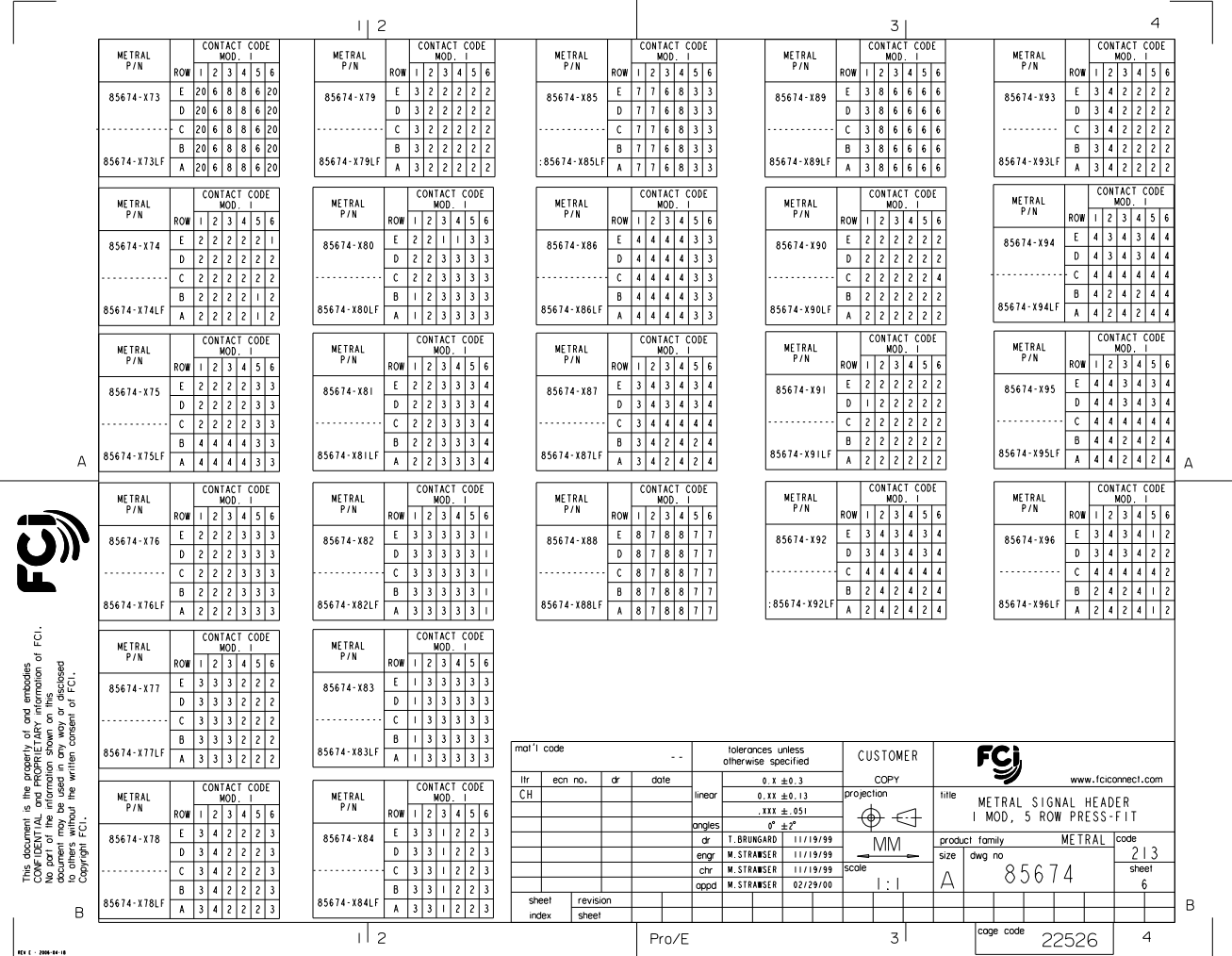
1 | 2 | Pro/E | 3 | cage code 22526 | 4



This document is the property of, and embodies CONFIDENTIAL and PROPRIETARY information of FCI. No part of the information shown on this document may be used in any way or disclosed to anyone other than the addressee without the written consent of FCI. Copyright FCI.

REV : 2005-10-18

METRAL P/N	ROW	CONTACT CODE	MOD.
85674-X73	E	2 0 6 8 8 6 2 0	2 0
.....	D	2 0 6 8 8 6 2 0	2 0
.....	C	2 0 6 8 8 6 2 0	2 0
.....	B	2 0 6 8 8 6 2 0	2 0
85674-X73LF	A	2 0 6 8 8 6 2 0	2 0



mat'l code		tolerances unless otherwise specified		CUSTOMER		FCI www.fciconnect.com	
ltr CH	ecn no.	dr	date	linear	projection	title	
						METRAL SIGNAL HEADER MOD. 5 ROW PRESS-FIT	
				angles of I.BRINGARD 11/11/99 eng. M.STRANSER 11/11/99 chr M.STRANSER 11/11/99 appd M.STRANSER 02/29/00		product family size	METRAL code 213
sheet index	revision sheet				scale	size	sheet 6
					1 : 1	85674	



This document is the property of, and embodies CONFIDENTIAL and PROPRIETARY information of FCJ. No part of the information shown on this document may be used in any way or disclosed to others without the written consent of FCJ. Copyright FCJ.

REV: 2008-04-10

METRAL P/N	ROW	CONTACT MOD.	CODE
85674-X97	E	4	4 4 4 3
	D	4	4 4 4 3
	C	4	4 4 4 3
	B	4	4 4 4 3
85674-X97LF	A	4	4 4 4 3

METRAL P/N	ROW	CONTACT MOD.	CODE
85674-X98	E	3	4 3 3 3 3
	D	3	4 3 3 3 3
	C	3	4 3 3 3 3
85674-X98LF	B	3	4 3 3 3 3
	A	3	4 3 3 3 3

METRAL P/N	ROW	CONTACT MOD.	CODE
85674-X99	E	2	2 1 1 2 2
	D	2	2 2 2 2 2
	C	2	2 2 2 2 2
	B	1	2 2 2 2 2
85674-X99LF	A	1	2 2 2 2 2

METRAL P/N	ROW	CONTACT MOD.	CODE
85674-X100	E	2	2 1 1 2 2
	D	2	2 1 1 2 2
	C	2	2 2 2 2 2
	B	2	2 2 2 2 2
85674-X100LF	A	2	2 2 2 2 2

METRAL P/N	ROW	CONTACT MOD.	CODE
85674-X101	E	2	2 2 2 2 2 1
	D	2	2 2 2 2 2 2
	C	2	1 2 2 2 2 2
	B	2	1 2 2 2 1 2
85674-X101LF	A	2	2 2 2 2 1 2

METRAL P/N	ROW	CONTACT MOD.	CODE
85674-X102	E	4	4 - 2 2 2
	D	4	4 - 2 2 4
	C	4	4 - 2 2 2
	B	-	- 2 2 2
85674-X102LF	A	4	2 2 2 2 2

METRAL P/N	ROW	CONTACT MOD.	CODE
85674-X103	E	29	29 29 7 7 7
	D	29	29 29 7 7 7
	C	29	29 29 7 7 7
	B	29	29 29 7 7 7
85674-X103LF	A	29	29 29 7 7 7

METRAL P/N	ROW	CONTACT MOD.	CODE
85674-X104	E	7	7 7 29 29 29
	D	7	7 7 29 29 29
	C	7	7 7 29 29 29
	B	7	7 7 29 29 29
85674-X104LF	A	7	7 7 29 29 29

METRAL P/N	ROW	CONTACT MOD.	CODE
85674-X105	E	7	8 7 8 7 8
	D	7	8 7 8 7 8
	C	8	8 8 8 8 8
	B	6	8 8 8 8 8
85674-X105LF	A	6	8 8 8 8 8

METRAL P/N	ROW	CONTACT MOD.	CODE
85674-X106	E	7	8 7 8 1 2
	D	7	8 7 8 2 2
	C	8	8 8 8 2 2
	B	6	8 8 8 1 2
85674-X106LF	A	6	8 8 8 1 2

METRAL P/N	ROW	CONTACT MOD.	CODE
85674-X107	E	19	19 19 3 3 3
	D	19	19 19 3 3 3
	C	19	19 19 3 3 3
	B	19	19 19 3 3 3
85674-X107LF	A	19	19 19 3 3 3

METRAL P/N	ROW	CONTACT MOD.	CODE
85674-X108	E	3	3 3 19 19 19
	D	3	3 3 3 19 19 19
	C	3	3 3 3 19 19 19
	B	3	3 3 3 19 19 19
85674-X108LF	A	3	3 3 3 19 19 19

METRAL P/N	ROW	CONTACT MOD.	CODE
85674-X109	E	2	2 2 2 2 2 2
	D	3	2 2 2 2 2 2
	C	4	2 2 2 2 2 4
	B	2	2 2 2 2 2 2
85674-X109LF	A	2	2 2 2 2 2 2

METRAL P/N	ROW	CONTACT MOD.	CODE
85674-X110	E	2	2 2 2 2 2 19
	D	2	2 2 2 2 2 19
	C	2	2 2 2 2 2 19
	B	2	2 2 2 2 2 19
85674-X110LF	A	2	2 2 2 4 2 19

METRAL P/N	ROW	CONTACT MOD.	CODE
85674-X111	E	6	6 6 6 6 6 20
	D	6	6 6 6 6 6 20
	C	6	6 6 6 6 6 20
	B	6	6 6 6 6 6 20
85674-X111LF	A	6	6 6 6 8 6 20

METRAL P/N	ROW	CONTACT MOD.	CODE
85674-X112	E	6	6 4 6 4 6 4 6 4 6 4
	D	6	4 6 4 6 4 6 4 6 4 6 4
	C	6	4 6 4 6 4 6 4 6 4 6 4
	B	6	4 6 4 6 4 6 4 6 4 6 4
85674-X112LF	A	6	4 6 4 6 4 6 4 6 4 6 4

METRAL P/N	ROW	CONTACT MOD.	CODE
85674-X113	E	6	7 6 4 6 4 6 4 6 4 6 4
	D	6	7 6 4 6 4 6 4 6 4 6 4
	C	6	7 6 4 6 4 6 4 6 4 6 4
	B	6	7 6 4 6 4 6 4 6 4 6 4
85674-X113LF	A	6	7 6 4 6 4 6 4 6 4 6 4

METRAL P/N	ROW	CONTACT MOD.	CODE
85674-X114	E	6	- 6 - 6 -
	D	-	- - - - -
	C	6	- 6 - 6 -
	B	-	- - - - -
85674-X114LF	A	6	- 6 - 6 -

METRAL P/N	ROW	CONTACT MOD.	CODE
85674-X115	E	6	4 6 4 6 4 6 4 6 4 6 4
	D	6	4 6 4 6 4 6 4 6 4 6 4
	C	6	5 4 6 4 6 4 6 4 6 4
	B	6	4 6 4 6 4 6 4 6 4 6 4
85674-X115LF	A	6	4 6 4 6 4 6 4 6 4 6 4

METRAL P/N	ROW	CONTACT MOD.	CODE
85674-X117	E	-	4 2 4 2 4
	D	-	4 2 4 2 4
	C	-	4 4 4 4 4
	B	-	4 2 4 2 4
85674-X117LF	A	-	4 2 4 2 4

METRAL P/N	ROW	CONTACT MOD.	CODE
85674-X118	E	2	2 2 19 19 19
	D	2	2 2 2 19 19 19
	C	2	2 2 2 19 19 19
	B	2	2 2 2 19 19 19
85674-X118LF	A	2	2 2 2 19 19 19

METRAL P/N	ROW	CONTACT MOD.	CODE
85674-X119	E	1	1 1 1 3 1 1
	D	1	1 1 1 3 1 1
	C	1	1 1 1 3 1 1
	B	1	1 1 1 3 1 1
85674-X119LF	A	1	1 1 1 3 1 1

mat'l code				tolerances unless otherwise specified				CUSTOMER		FCJ www.fcjconnect.com	
ltr	ecr no.	dr	date	linear	0.X ±0.3 0.XX ±0.13 .XXX ±.051 0" ±.2"	projection	title	product family	code	sheet	code
CH				angles	of	MM	METRAL SIGNAL HEADER I MOD, 5 ROW PRESS-FIT	METRAL	213	7	
				eng	I.BRINGARD 11/19/99	scale	size	85674			
				chr	M.STRANSER 11/19/99						
				appd	M.STRANSER 02/29/00						
sheet index	revision	sheet									

1 | 2

Pro/E

3 |

cage code 22526

4

PDM: Rev:CH

STATUS:Released

Printed: May 16, 2009



This document is the property of, and embodies CONFIDENTIAL and PROPRIETARY information of FCI. No part of the information shown on this document may be used in any way or disclosed to others without the written consent of FCI. Copyright FCI.

REV: 2008-04-08

METRAL P/N	ROW	CONTACT CODE MOD. 1	METRAL P/N	ROW	CONTACT CODE MOD. 1	METRAL P/N	ROW	CONTACT CODE MOD. 1	METRAL P/N	ROW	CONTACT CODE MOD. 1	METRAL P/N	ROW	CONTACT CODE MOD. 1
85674-X121	E	6 6 6 5 6 6	85674-X127	E	4 2 2 2 2 2	85674-X133	E	59 7 31 7 59 7	85674-X137	E	2 2 2 2 2 2	85674-X141	E	1 1 1 1 1 1
.....	D	6 6 6 6 6 6	D	4 2 2 2 2 2	D	59 7 31 7 59 7	D	2 2 2 2 2 1	D	1 1 1 3 3 1
.....	C	6 6 6 6 6 6	C	4 2 2 2 2 2	C	59 7 31 7 59 7	C	- - - - -	C	1 1 1 3 3 1
85674-X121LF	B	6 6 6 6 6 6	85674-X127LF	B	4 2 2 2 2 2	85674-X133LF	B	59 7 31 7 59 7	85674-X137LF	B	2 2 2 2 2 2	85674-X141LF	B	1 1 1 1 1 1
.....	A	6 6 6 6 6 6	A	4 2 2 2 2 2	A	59 7 31 7 59 7	A	2 2 2 2 2 1	A	1 1 1 1 1 1
85674-X122	E	6 5 6 6 6 6	85674-X128	E	19 2 2 2 2 2	85674-X134	E	2 2 2 2 2 1 2	85674-X138	E	1 1 1 - 2 2 2	85674-X142	E	2 2 2 2 3 2
.....	D	6 6 6 6 6 6	D	2 2 2 2 2 2	D	2 2 2 2 2 2	D	1 1 1 - 2 2 1	D	2 2 2 2 3 2
.....	C	6 6 6 6 6 6	C	2 2 2 2 2 2	C	2 2 2 2 2 2	C	1 1 1 - - - -	C	2 2 2 2 3 2
85674-X122LF	B	6 6 6 6 6 6	85674-X128LF	B	2 2 2 2 2 2	85674-X134LF	B	2 2 2 2 2 2	85674-X138LF	B	1 1 1 - 2 2 2	85674-X142LF	B	2 2 2 2 3 2
.....	A	6 6 6 6 6 6	A	2 1 2 2 2 2	A	2 2 2 2 2 2	A	1 1 1 - 2 2 1	A	2 2 2 2 3 2
85674-X123	E	2 1 2 2 2 2	85674-X129	E	19 2 2 2 2 2	85674-X135	E	1 1 2 2 3 3	85674-X139	E	3 3 3 3 3 3	85674-X143	E	2 2 2 2 2 19
.....	D	2 2 2 2 2 2	D	2 2 2 2 2 2	D	1 1 2 2 3 3	D	3 3 3 3 3 3	D	2 2 2 2 2 19
.....	C	2 2 2 2 2 2	C	2 2 2 2 2 2	C	1 1 2 2 3 3	C	1 3 3 3 3 3	C	2 2 2 2 2 19
85674-X123LF	B	2 2 2 2 2 2	85674-X129LF	B	1 2 2 2 2 2	85674-X135LF	B	1 1 2 2 3 3	85674-X139LF	B	3 3 3 3 3 3	85674-X143LF	B	2 2 2 2 2 19
.....	A	2 2 2 2 2 2	A	2 1 2 2 2 2	A	1 1 2 2 3 3	A	3 3 3 3 3 3	A	2 2 1 2 2 19
85674-X124	E	6 6 6 7 8 8	85674-X130	E	6 6 6 6 6 2	85674-X136	E	2 2 2 2 2 2	85674-X140	E	3 3 2 2 2 2	85674-X144	E	19 2 19 2 19 19
.....	D	6 6 6 6 6 8	D	6 6 6 6 6 2	D	2 2 2 2 2 2	D	3 3 2 2 2 2	D	19 2 19 2 19 19
.....	C	6 8 8 6 6 6	C	6 6 6 6 6 2	C	2 2 2 2 2 2	C	3 3 2 2 2 2	C	19 2 19 2 19 19
85674-X124LF	B	6 6 6 6 8 8	85674-X130LF	B	6 6 6 6 2 1 6 2	85674-X136LF	B	2 2 2 2 2 2	85674-X140LF	B	3 3 2 2 2 2	B	19 2 19 2 19 19
.....	A	6 6 5 6 8 8	A	6 6 6 6 6 2	A	2 2 2 2 2 3	A	3 3 2 2 2 2	A	19 2 19 2 19 19
85674-X125	E	1 2 2 2 2 2	85674-X131	E	2 2 2 2 2 2	85674-X137	E	2 2 2 2 2 2
.....	D	1 2 2 2 2 2	D	2 2 2 2 2 2	D	2 2 2 2 2 2
.....	C	1 2 2 2 2 2	C	2 2 2 2 2 2	C	2 2 2 2 2 2
85674-X125LF	B	1 2 2 2 2 2	85674-X131LF	B	2 2 2 2 19 2 2	B	2 2 2 2 2 2
.....	A	1 2 2 2 2 2	A	2 2 2 2 2 2	A	2 2 2 2 2 2
85674-X126	E	3 3 3 3 3 1	85674-X132	E	1 3 3 1 3 3
.....	D	3 3 3 3 3 3	D	1 1 1 1 1 1
.....	C	3 3 3 3 3 4	C	1 1 1 1 1 1
85674-X126LF	B	3 3 3 3 3 3	85674-X132LF	B	1 1 1 1 1 1
.....	A	3 3 3 3 3 1	A	1 3 3 1 3 1

mat'l code		tolerances unless otherwise specified		CUSTOMER	
thr	ecm no.	dr	date	COPY	www.fciconnect.com
CH				projection	title
				0.X ±0.3	METRAL SIGNAL HEADER
				0.XX ±0.13	I MOD, 5 ROW PRESS-FIT
				.XXX ±.051	
				of ±Z"	
				linear	product family
				or	size
				I.BRINGARD 11/19/99	METRAL
				eng. M.STRANSER 11/19/99	code
				chr. M.STRANSER 11/19/99	213
				appd. M.STRANSER 02/29/00	sheet
				scale	8
				I : 1	
sheet index	revision sheet				

1 | 2 Pro/E 3 | cage code 22526 4



This document is the property of, and embodies
 CONFIDENTIAL and PROPRIETARY information of FCJ.
 No part of the information shown on this
 document may be used in any way or
 transmitted in any form or by any means
 without the written consent of FCJ.
 Copyright FCJ.

METRAL P/N	ROW	CONTACT MOD.	CODE	1	2	3	4	5	6
85674-X145	E	3	3	3	3	2	1		
	D	3	3	3	3	2	1		
	C	3	3	3	3	2	1		
85674-X145LF	B	3	3	3	3	2	1		
	D	3	3	3	3	2	1		
	A	3	3	3	3	2	1		
85674-X146	E	2	2	2	2	2	2		
	D	2	2	2	2	2	2		
	C	2	2	2	2	2	2		
85674-X146LF	B	2	2	2	2	2	2		
	D	2	2	2	2	2	2		
	A	2	2	2	2	2	2		
85674-X147	E	2	2	2	2	2	2		
	D	2	2	2	2	2	2		
	C	2	2	2	2	2	2		
85674-X147LF	B	2	2	2	2	2	2		
	D	2	2	2	2	2	2		
	A	2	2	2	2	2	2		
85674-X148	E	1	1	2	2	2	2		
	D	1	1	2	2	2	2		
	C	2	2	2	2	2	2		
85674-X148LF	B	1	1	2	2	2	2		
	D	1	1	2	2	2	2		
	A	1	1	2	2	2	2		
85674-X149	E	2	2	2	2	2	2		
	D	2	2	2	2	1	2		
	C	2	2	2	2	1	2		
85674-X149LF	B	2	2	2	2	2	2		
	D	2	2	2	2	2	2		
	A	2	2	2	2	2	2		
85674-X150	E	1	1	2	2	2	2		
	D	2	2	2	2	2	2		
	C	2	2	2	2	2	2		
85674-X150LF	B	2	2	2	2	2	2		
	D	2	2	2	2	2	2		
	A	2	2	2	2	2	2		

METRAL P/N	ROW	CONTACT MOD.	CODE	1	2	3	4	5	6
85674-X151	E	6	6	6	6	6	6		
	D	6	6	6	6	6	5		
	C	6	6	6	6	6	6		
85674-X151LF	B	6	6	6	6	6	6		
	D	6	6	6	6	6	6		
	A	6	6	6	6	6	6		
85674-X152	E	7	6	6	6	6	6		
	D	7	6	6	6	6	6		
	C	6	6	6	6	6	6		
85674-X152LF	B	7	6	6	6	6	6		
	D	7	6	6	6	6	6		
	A	7	6	6	6	6	6		
85674-X153	E	2	2	2	2	2	2		
	D	2	2	2	2	2	2		
	C	2	2	2	2	2	2		
85674-X153LF	B	2	2	2	2	2	2		
	D	2	2	2	2	2	2		
	A	2	2	2	2	2	2		
85674-X154	E	2	2	2	2	2	2		
	D	2	2	2	2	2	2		
	C	2	2	2	2	2	2		
85674-X154LF	B	2	2	2	2	2	2		
	D	2	2	2	2	2	2		
	A	2	2	2	2	2	2		
85674-X155	E	1	1	9	3	3	3		
	D	3	1	9	3	3	3		
	C	3	1	9	3	3	3		
85674-X155LF	B	1	1	9	3	3	3		
	D	3	1	9	3	3	3		
	A	1	1	9	3	3	3		
85674-X156	E	1	1	1	1	1	2		
	D	1	1	1	1	1	2		
	C	1	1	1	1	1	2		
85674-X156LF	B	1	1	1	1	1	2		
	D	1	1	1	1	1	2		
	A	1	1	1	1	1	2		

METRAL P/N	ROW	CONTACT MOD.	CODE	1	2	3	4	5	6
85674-X157	E	3	3	3	3	1	9	3	
	D	3	3	3	3	1	9	3	
	C	3	3	3	3	1	3		
85674-X157LF	B	3	3	3	3	1	9	3	
	D	3	3	3	3	1	9	3	
	A	3	3	3	3	1	9	3	
85674-X158	E	3	3	3	3	3	3		
	D	3	3	3	3	3	3		
	C	3	3	3	3	3	1	9	
85674-X158LF	B	3	3	3	3	3	3		
	D	3	3	3	3	3	3		
	A	3	3	3	3	3	3		
85674-X159	E	2	2	2	2	2	2		
	D	2	2	2	2	2	2		
	C	2	2	2	2	2	2		
85674-X159LF	B	2	2	2	2	2	2		
	D	2	2	2	2	2	2		
	A	2	2	2	2	2	2		
85674-X160	E	3	3	3	3	3	3		
	D	3	3	3	3	3	3		
	C	3	3	3	3	3	3		
85674-X160LF	B	1	1	3	3	3	3		
	D	3	3	3	3	3	3		
	A	3	3	3	3	3	3		

METRAL P/N	ROW	CONTACT MOD.	CODE	1	2	3	4	5	6
85674-X161	E	3	3	3	3	3	3		
	D	3	3	3	3	3	3		
	C	1	9	1	9	1	9	3	3
85674-X161LF	B	3	3	3	3	3	3		
	D	3	3	3	3	3	3		
	A	3	3	3	3	3	3		

mat'l code		--		tolerances unless otherwise specified		CUSTOMER		FCJ www.fcjconnect.com	
lfr	ecm no.	dr	date	linear	0.X ±0.3	projection	title	METRAL SIGNAL HEADER	code
CH				angles	.XX ±0.13	MM	I MOD, 5 ROW PRESS-FIT	METRAL	213
				dr	.XX ±.051	scale	product family	size	sheet
				eng	0° ±2°	1:1	METRAL	85674	9
				chr	I.BRINGARD 11/19/99				
				appd	M.STRAMSER 11/19/99				
					M.STRAMSER 11/19/99				
					M.STRAMSER 02/29/00				
sheet index	revision sheet								

REV: 2008-04-08

1 | 2

Pro/E

3 |

cage code 22526

4

PRODUCT NUMBER
85674-XYX OR 85674-XYXX
85674-XYXLF OR 85674-XYXXLF

NOTES:

- FOR DIM A AND B SEE SHEET 2 AND UP.
- BODY MATERIAL: LIQUID CRYSTAL
POLYMER 30 % GLASS.
FLAME RETARDANT ACC. UL 94-V0.
- PIN MATERIAL:
PHOSPHOR BRONZE.
- PLATING ON PRESS-FIT TAIL:
85674-XYX IS SnPb
85674-XYXLF IS Sn (LEAD FREE)
PLATING ON CONTACT AREA CONFORMS TO PERFORMANCE
LEVEL SHOWN IN TABLE BELOW.
- PRODUCT MARKING:
PART NUMBER DESIGNATION & BATCH I.D.
- ALL PRODUCTS WITH PART NUMBERS SHOWN IN
SUBSEQUENT TABLES WILL BE PACKAGED IN TUBES.
IF TRAY PACKAGING IS REQUIRED, A SUFFIX "P"
WILL BE ADDED TO THE END OF THE PART NUMBER.
EXAMPLE: XXXXX-XXXXP
- PRODUCT SPECIFICATION GS-12-180
APPLICATION SPECIFICATION BUS-20-073
- AFTER INSERTION INTO CIRCUIT BOARD WITH
QUALIFIED TOOL.
- THE PRODUCTS WHERE THE PART NUMBER ENDS IN LF MEET THE
EUROPEAN UNION DIRECTIVES AND OTHER COUNTRY REGULATIONS
AS DESCRIBED IN GS-22-008.

ALL PRODUCTS EXCEPT THOSE WITH PART NUMBERS CONTAINING
(DRAWING NO.)-N1--- OR (DRAWING NO.)-N5--- WILL WITHSTAND EXPOSURE
TO 260°C FOR 60 SECONDS IN A CONVECTION, INFAR-RED OR
VAPOR PHASE REFLOW OVEN. PART NUMBERS (DRAWING NO.)-N1---
AND (DRAWINGS NO.)-N5--- WILL NOT WITHSTAND REFLOW AND Au CONTACT
SURFACE OF THE CONTACTS SHALL BE EXPOSED TO A MAXIMUM 140°C FOR
NO LONGER THAN 15 SECONDS IN A WAVE SOLDER APPLICATION.

PLATING IN CONTACT AREA		
DASH NUMBER	PERFORMANCE LEVEL	NOTES
-PYX OR -PYYX	0.25 um GOLD MIN.	-
-N1XX OR -N1YYX	TELCORDIA CO (NXT)	-
-N5XX OR -N5YYX	TELCORDIA UE (NXT)	-
-1YY OR -1YXX	TELCORDIA CO	-
-2YY OR -2YXX	TELECOM CLASS	-
-3YY OR -3YXX	IEC CLASS I	-
-5YY OR -5YXX	TELCORDIA UE	-
-9YY OR -9YXX	TELCORDIA CO	-
-N1YYLF OR -N1YYXLF	TELCORDIA CO (NXT) IEC CLASS I	SEE NOTE 9
-N5YYLF OR -N5YYXLF	TELCORDIA UE (NXT)	SEE NOTE 9
-1YYLF OR -1YYXLF	TELCORDIA CO IEC CLASS I	SEE NOTE 9
-2YYLF OR -2YYXLF	TELECOM CLASS	SEE NOTE 9
-5YYLF OR -5YYXLF	TELCORDIA UE	SEE NOTE 9



This document is the property of, and embodies
CONFIDENTIAL and PROPRIETARY information of FCI.
No part of the information shown on this
document may be used in any way or
reproduced in any form without the
written consent of FCI.
Copyright FCI.

mat'l code		--		tolerances unless otherwise specified		CUSTOMER		www.fciconnect.com	
lfr	ecm no.	dr	date	linear	0.X ±0.3	projection	title METRAL SIGNAL HEADER		
CH				angles	0.XX ±0.13		1 MOD, 5 ROW PRESS-FIT		
				dr	.XXX ±.051		product family	METRAL	code
				eng	0 ±.2	scale	size	dwg no	213
				chr	I.BRINGARD 11/19/99	1:1	A	85674	sheet
				appd	M.STRAMSER 11/19/99				10
					M.STRAMSER 02/29/00				
sheet index	revision sheet								

REV. 1 - 2008-04-10

1 | 2

Pro/E

3 |

cage code 22526

4