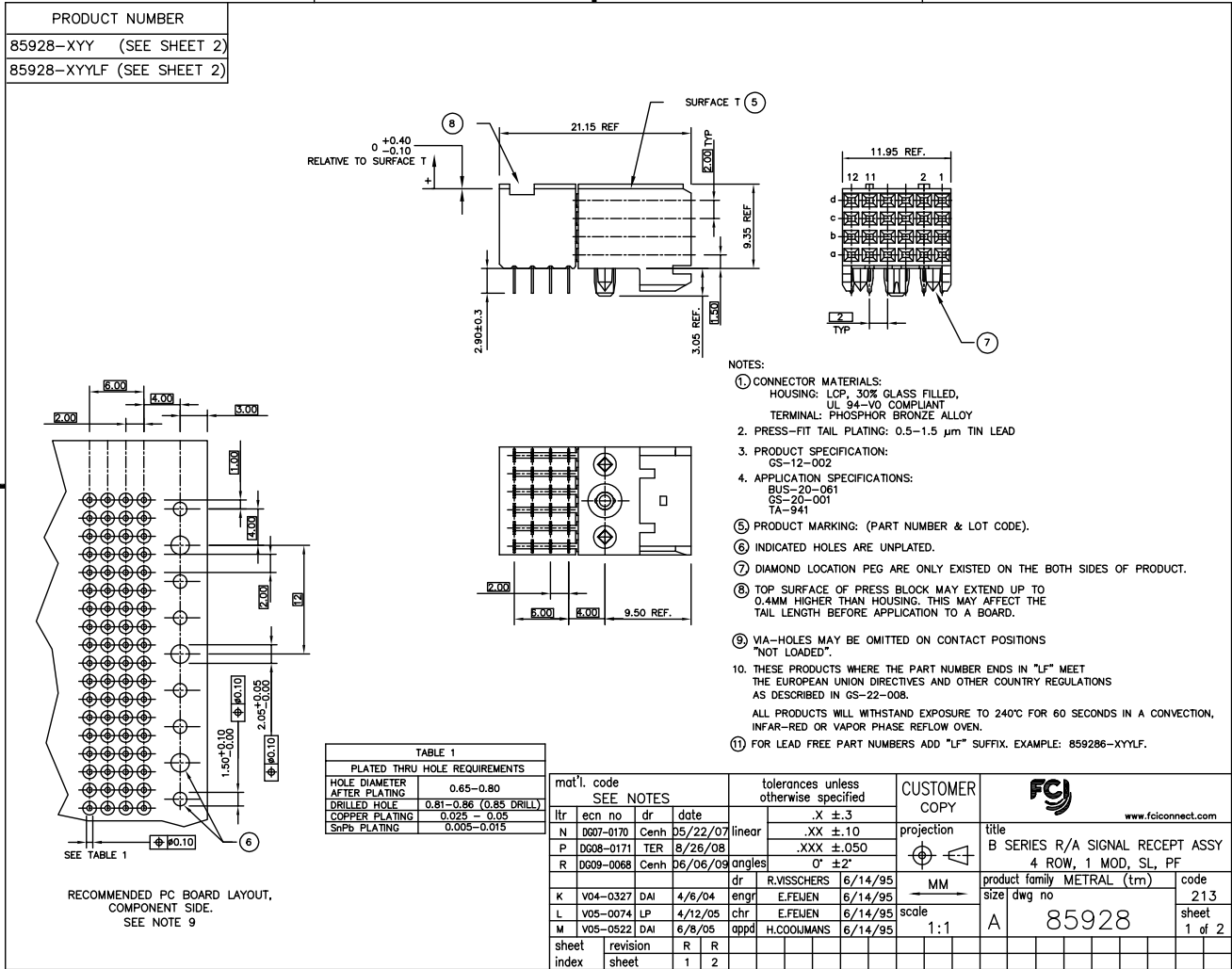


Tous droits strictement réservés. Reproduction ou communication e des tiers interdite sous quelque forme que ce soit sans autorisation écrite du propriétaire. Propriété de c FCI. Droits de reproduction FCI.



All rights strictly reserved. Reproduction or issue to third parties in any form whatever is not permitted without written authority from the proprietor. Property of FCI. Copyright FCI.



ACAD

PDM: Rev:R

STATUS: Released

Printed: Aug 16, 2009

Tous droits strictement réservés. Reproduction ou communication à des tiers interdite sans quelque forme que ce soit sans autorisation écrite du propriétaire. Propriété de c FCI. Droits de reproduction FCI.



All rights strictly reserved. Reproduction or issue to third parties in any form whatever is not permitted without written authority from the proprietor. Property of FCI. Copyright FCI.

1 | 2

3 |

4

PART NUMBER	CONFIGURATION						
	ROW	6	5	4	3	2	1
85928-X01 SEE NOTE 11 LEAD FREE OPTION	D	X	-	X	-	X	-
	C	-	X	-	X	-	X
	B	X	-	X	-	X	-
	A	-	X	-	X	-	X
85928-X02 SEE NOTE 11 LEAD FREE OPTION	D	-	X	-	X	-	X
	C	X	-	X	-	X	-
	B	-	X	-	X	-	X
	A	X	-	X	-	X	-
85928-X03 SEE NOTE 11 LEAD FREE OPTION	D	X	X	-	-	X	X
	C	X	X	-	-	X	X
	B	X	X	-	-	X	X
	A	X	X	-	-	X	X

"X" = LOADED POSITION  
 "-" = EMPTY POSITION

PLATING CONTACT AREA:	
DASH NR:	PERFORMANCE LEVEL
-1YY/1YYLF	TELCORDIA CO
-2YY/2YYLF	CUSTOMER SPECIAL
-3YY/3YYLF	CUSTOMER SPECIAL

mat'l. code SEE NOTES		tolerances unless otherwise specified		CUSTOMER COPY	www.fciconnect.com
ltr	ecn no	dr	date	linear	
R				.X ±.3	
				.XX ±.10	title
				.XXX ±.050	B SERIES R/A SIGNAL RECEPT ASSY
				0° ±2°	4 ROW, 1 MOD, SL, PF
		dr	R.VISSCHERS 6/14/95	angles	product family METRAL (tm)
		engr	E.FELJEN 6/14/95	MM	code
		chr	E.FELJEN 6/14/95	scale	213
		appd	H.COOLMANS 6/14/95	1:1	sheet
sheet	revision				2 of -
index	sheet				

1 | 2

3 |

4

ACAD

PDM: Rev:R

STATUS: Released

Printed: Aug 16, 2009

cage code  
22526