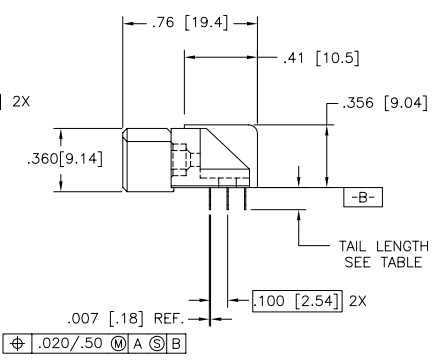
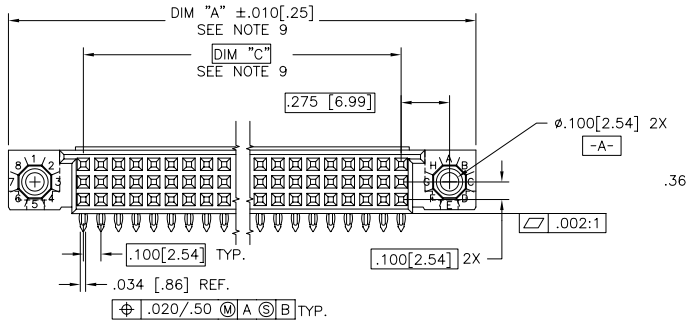
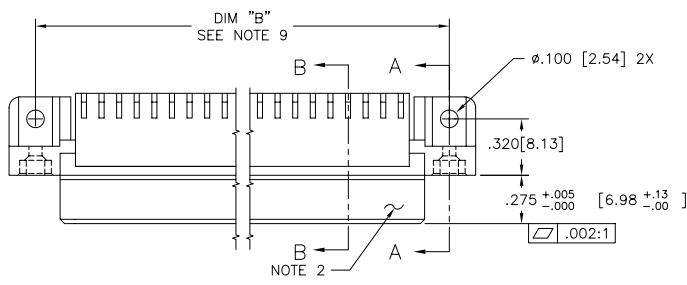


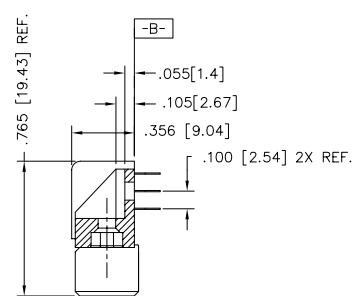
PRODUCT NUMBER
SEE TABLE



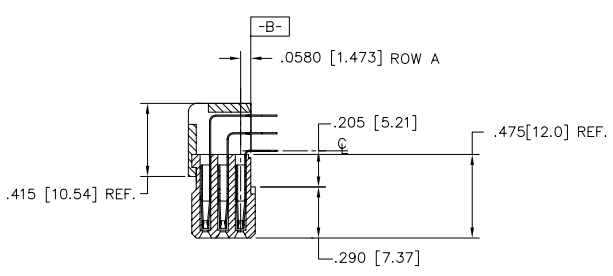
mat'l. code SEE NOTE 4	surface ISO 1302 \checkmark	tolerance ISO 406 ISO 1101	projection 	product family HPC
ltr V90001	ecr HTB	no 2/15/99	dr date	title 3 ROW R/A RECEIPT. PRESS FIT, 0 GUIDE PIN
K	V00288	JWS	1/31/00	angles linear XXX.01/3 .XXX.005/.13 XXXXX.0020/.051
L	V10826	JRW	2/7/01	scale 1:1
M	V05-0511	DAI	8/15/05	dr G.PETERS 6/19/93
N	V05-1054	HTB	11/17/05	enrg S.CLARK 6/19/93
P	M06-0255	MHT	7/06/06	chr S.CLARK 6/19/93
R	M07-0099	AGS	2/08/07	appd S.CLARK 6/19/93
S				
sheet index	revision sheet	S 1	S 2	S 3

PDM: Rev:S STATUS:Released Printed: Feb 20, 2010

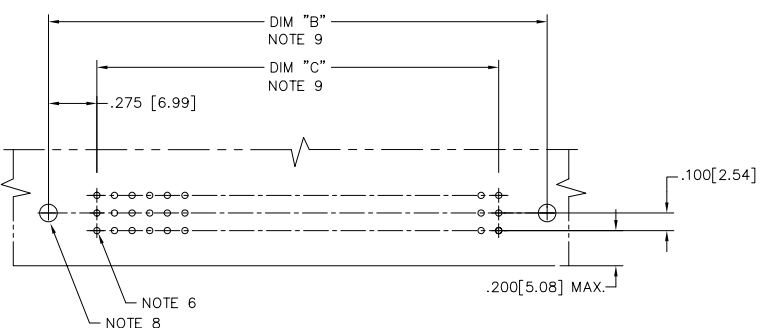
PRODUCT NUMBER
SEE TABLE



SECTION A-A



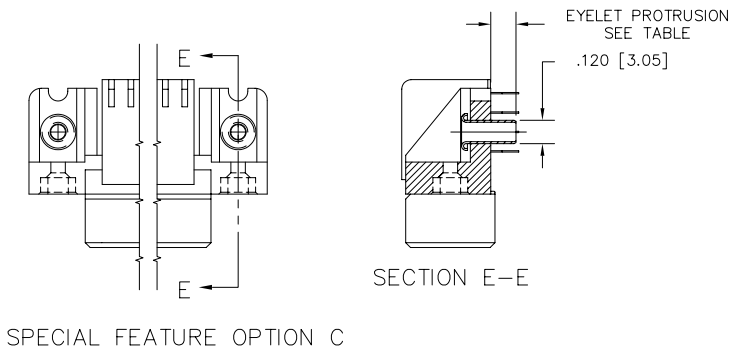
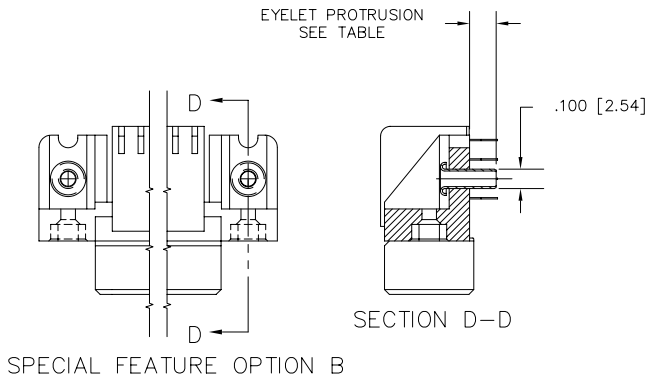
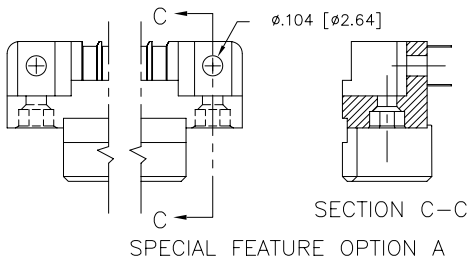
SECTION B-B



RECOMMENDED PCB LAYOUT
(ALL HOLES LOCATED ON .100 [2.54] GRID
UNLESS OTHERWISE SHOWN.)

mat'l. code SEE NOTE 4		surface ISO 1302 ✓	tolerance ISO 406 ISO 1101	projection 1st angle	product family HPC
ltr	ecn no	dr	date	title 3 ROW R/A RECEPT. PRESS FIT, 0 GUIDE PIN	scale 1:1
S				tolerances unless otherwise specified XXX±.01/.3 XXXX±.005/.13 XXXXX±.0020/.051	INCH/MM
				angles 0°±2'	
		dr	G.PETERS 6/19/93		FCI
		engr	S.CLARK 6/19/93		50645
		chr	S.CLARK 6/19/93		sheet 2 of 4 size A3
		appd	S.CLARK 6/19/93		type Product Customer Drawing
sheet index	revision sheet				

PRODUCT NUMBER
SEE TABLE



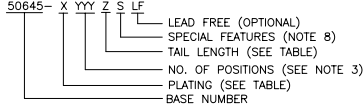
mat'l. code SEE NOTE 4	surface ISO 1302 ✓	tolerance ISO 406 ISO 1101	projection INCH/MM	product family HPC
ltr S	ecn no	dr date	angles linear 0°±2'	tolerances unless otherwise specified XXX±.01/.3 XXXX±.005/.13 XXXXX±.0020/.051
			scale 1:1	title 3 ROW R/A RECEPT. PRESS FIT, 0 GUIDE PIN
				dwg no 50645
				sheet 3 of 4 size A3
				type Product Customer Drawing
sheet index	revision sheet			

PDM: Rev:S STATUS:Released Printed: Feb 20, 2010

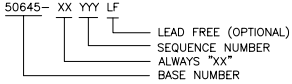
PRODUCT NUMBER NOTE 1	NUMBER OF POSITIONS NOTE 3	TAIL LENGTH ±.010/0.25	SPECIAL FEATURES SEE NOTE 8	SOLDER TAIL PLATING	CONTACT PLATING	EYELET PROTRUSION
50645-1YYYE	YYY	.125/3.18	NONE	TIN-LEAD	30u"/.76u Au	N/A
50645-1YYYELF	YYY	.125/3.18	NONE	TIN	30u"/.76u GXT	N/A
50645-1YYYEA	YYY	.125/3.18	"A"	TIN-LEAD	30u"/.76u Au	N/A
50645-1YYYEALF	YYY	.125/3.18	"A"	TIN	30u"/.76u GXT	N/A
50645-1YYYEB	YYY	.125/3.18	"B"	TIN-LEAD	30u"/.76u Au	.137/3.48
50645-1YYYEBLF	YYY	.125/3.18	"B"	TIN	30u"/.76u GXT	.137/3.48
50645-1YYYEC	YYY	.125/3.18	"C"	TIN-LEAD	30u"/.76u Au	.115/2.92
50645-1YYYECLF	YYY	.125/3.18	"C"	TIN	30u"/.76u GXT	.115/2.92
50645-1YYYF	YYY	.145/3.68	NONE	TIN-LEAD	30u"/.76u Au	N/A
50645-1YYYFLF	YYY	.145/3.68	NONE	TIN	30u"/.76u GXT	N/A
50645-1YYYFA	YYY	.145/3.68	"A"	TIN-LEAD	30u"/.76u Au	N/A
50645-1YYYFALF	YYY	.145/3.68	"A"	TIN	30u"/.76u GXT	N/A
50645-1YYYFC	YYY	.145/3.68	"C"	TIN-LEAD	30u"/.76u Au	.170/4.32
50645-1YYYCLF	YYY	.145/3.68	"C"	TIN	30u"/.76u GXT	.170/4.32

NOTES:

① PRODUCT NUMBERING CODE



PRODUCT NUMBERING CODE FOR SELECT LOAD



② MANUFACTURE'S LOGO, PART NUMBER, AND LOT CODE TO APPEAR ON THIS SURFACE.

③ THIS PRODUCT IS CONFIGURED IN SIZES OF 6 THRU 80 COLUMNS IN INCREMENTS OF ONE, I.E. 6, 7, 8, 9,79, 80.

④ MATERIAL: PRESS BLOCK - HIGH TEMP THERMOPLASTIC HOUSING; GLASS AND MINERAL FILLED HIGH TEMPERATURE THERMOPLASTIC, FLAME RETARDANT PER UL94V-0. COLOR-BLACK CONTACT: BeCu

5. PLATING:
CONTACT AREA: 30u"/0.76 μm Au OR 30u"/0.76μm GXT (FOR LEAD-FREE OPTION)
TAILS: EITHER TIN OR TIN LEAD, SEE TABLE.

⑥ DRILLED HOLE DIA OF .0453±.0010 [1.151±0.025] FINISHED TO .0400±.0030 [1.016±0.076] BY PLATING SnPb OR OTHER PLATING .0003 [0.008] TO .0006 [0.015] THICK WITH A COPPER UNDERPLATE AS NEEDED.

7. INFORMATION DOCUMENT: FOR PCB STAY-AWAY ZONE, SEE TA-0954.

⑧ SPECIAL FEATURES:

- = IF NO SPECIAL FEATURE CODE IS SELECTED, CONNECTOR WILL APPEAR AS SHOWN. PCB MOUNTING HOLE DIMENSION TO BE $\phi.120\pm.003$ [3.05±0.07]

"A" = IF SPECIFIED, CONNECTOR WILL APPEAR AS SHOWN ON SHEET 3. PCB MOUNTING HOLE DIMENSION TO BE $\phi.100\pm.003$ [2.54±0.07].

"B" = IF SPECIFIED, CONNECTOR WILL HAVE PRE-INSTALLED EYELET FOR P.C.B. ATTACHMENT IN A $\phi.100\pm.003$ [2.54±0.07] MOUNTING HOLE. SEE SHEET 3. (AVAILABLE IN "E" TAIL LENGTH. ONLY).

"C" = IF SPECIFIED, CONNECTOR WILL HAVE PRE-INSTALLED EYELET FOR P.C.B. ATTACHMENT IN A $\phi.120\pm.003$ [3.05±0.07] MOUNTING HOLE. SEE SHEET 3.

⑨ DIMENSION "A" CALCULATION = $.100$ (2.54) X NO. OF COLUMNS +.75 (19.1)
DIMENSION "B" CALCULATION = $.100$ (2.54) X NO. OF COLUMNS +.450 (11.43)
DIMENSION "C" CALCULATION = $.100$ (2.54) X NO. OF COLUMNS - .100 (2.54)

10. ALL POSITIONS ARE LOADED EXCEPT FOR -XXYYY ASSEMBLIES WHICH HAVE SELECTIVE LOADING.

11. THIS PRODUCT (WITH "LF" SUFFIX) MEETS EUROPEAN UNION DIRECTIVES AND OTHER COUNTRY REGULATIONS AS DESCRIBED IN GS-22-008.

12. THIS HOUSING WILL WITHSTAND EXPOSURE TO 260°C PEAK TEMPERATURE FOR 10-30 SECONDS IN A CONVECTION, INFRA-RED OR VAPOR PHASE REFLOW OVEN.

mat'l. code SEE NOTE 4		surface ISO 1302 ✓	tolerance ISO 406 ISO 1101	projection 	product family HPC
ltr	ecn	no	dr	date	title 3 ROW R/A RECEPT. PRESS FIT, 0 GUIDE PIN
S					scale 1:1
angles		linear	.xxx±.01/.3 .xxx±.005/.13 .xxx±.0020/.051		dwg no 50645
dr	G.PETERS	6/19/93	enr		sheet 4 of 4 size A3
chr	S.CLARK	6/19/93	appd		type Product Customer Drawing
appd	S.CLARK	6/19/93			
sheet index	revision sheet				