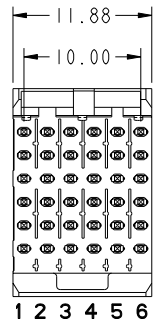
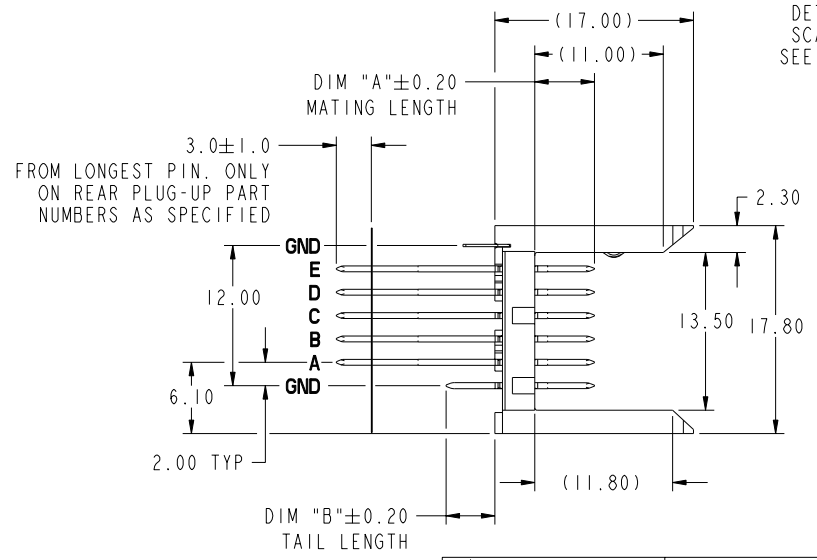
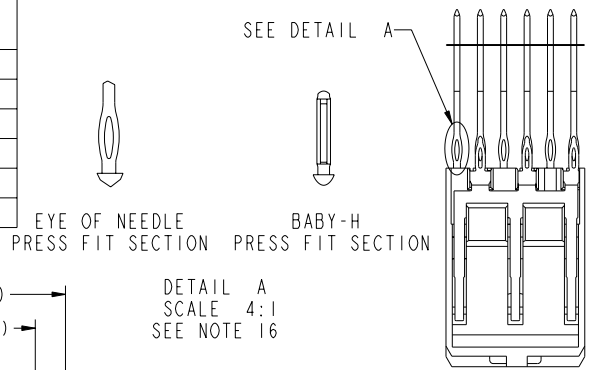




This document is the property of and embodies CONFIDENTIAL and PROPRIETARY information of FCJ. No part of the information shown on this document may be used in any way or disclosed to others without the written consent of FCJ. Copyright FCJ.

PRODUCT NUMBER	PLATING PERFORMANCE LEVEL	APPLICATION	FOR REAR PLUG-UP APPLICATIONS USE SHROUD
74817-1ZZZ	TELCORDIA CO	STANDARD	84818-104
74817-1ZZZLF		LEAD FREE	84818-104LF
74817-5ZZZ	TELCORDIA UE	STANDARD	84818-504
74817-5ZZZLF		LEAD FREE	84818-504LF
74817-9ZZZ	TELCORDIA CO	STANDARD	84818-104
74817-9ZZZLF		LEAD FREE	84818-104LF



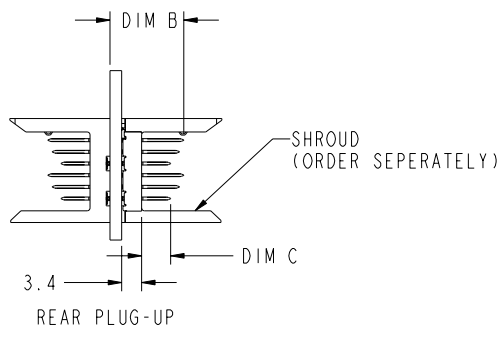
mat'l code: SEE NOTE 5				tolerances unless otherwise specified				CUSTOMER		FCJ	
lfr	ecm no.	dr	date	0.X ± 0.3				COPY		www.fcjconnect.com	
AW	V08-0141	LP	2008-03-28	0.XX ± 0.13				projection		title	
-	-	-	-	.XXX ± 0.051				MM		VERTICAL SIGNAL HDR 5 ROW	
AR	V07-0187	DCH	2007-04-24	0° $\pm 2^\circ$				scale		P.F. 30 POS. SELECT LOAD STD.	
AS	V07-0676	HTB	2007-11-07	dr	K. BELL	2000-03-29	2:1		product family		
AT	V07-0697	LP	2007-11-29	enr	M. HAHN	2000-03-29	A		METRAL 1000		
AU	V08-0002	HTB	2008-01-09	chr	M. HAHN	2000-03-29	9		code		
AV	V08-0048	LP	2008-2-1	oppd	M. HAHN	2000-03-29	1		213		
sheet index	revision	AW	AW	AW	AW	AW	AW	AW	AW	AW	AW
	sheet	1	2	3	4	5	6	7	8	9	1 of 9

Pro/E 3 cage code 22526 4

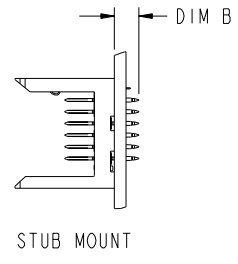
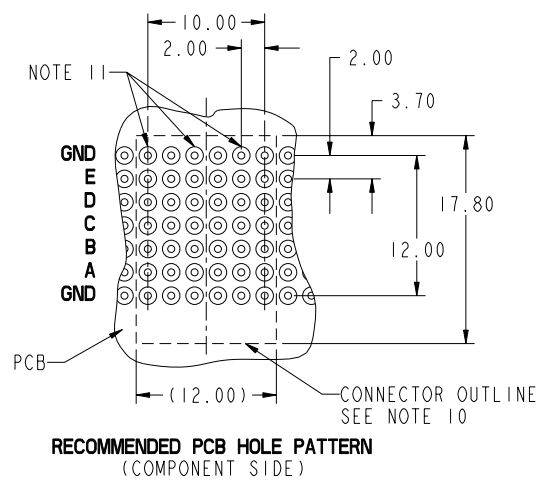
PDM: Rev:AW STATUS:Released Printed: Feb 20, 2010

PRODUCT NUMBER
SEE SHEET 1

PRESS-FIT HOLES	OPTION 1
HOLE DIAMETER AFTER PLATING	0.65-0.80
DRILLED HOLE	0.81-0.86 (0.85 DRILL)
COPPER PLATING	0.025 MIN
SnPb PLATING	0.005-0.015



SEE PRINT 58351 FOR ADDITIONAL PCB INFORMATION



mat'l code: SEE NOTE 5				tolerances unless otherwise specified		CUSTOMER		FCJ	
lfr	ecn no.	dr	date	linear	0.X ± 0.3	COPY		www.fcjconnect.com	
AW					0.XX ± 0.13	projection		title	
				angles	.XXX ± .051	MM		VERTICAL SIGNAL HDR 5 ROW	
				dr	0° ± 2°	scale		P.F. 30 POS. SELECT LOAD STD.	
				enr		2:1		product family	
				chr	K. BELL 2000-03-29	A		METRAL 1000	
				oppd	M. HAHN 2000-03-29			code	
					M. HAHN 2000-03-29			213	
sheet index	revision sheet							sheet	
								2	



This document is the property of and embodies CONFIDENTIAL and PROPRIETARY information of FCJ. No part of the information shown on this document may be used in any way or disclosed to others without the written consent of FCJ. Copyright FCJ.

REV E - 2006-04-18

Pro/E 3 cage code 22526 4

PDM: Rev:AW STATUS: **Released** Printed: Feb 20, 2010



This document is the property of and embodies CONFIDENTIAL and PROPRIETARY information of FCJ. No part of the information shown on this document may be used in any way or disclosed to others without the written consent of FCJ. Copyright FCJ.

PIN CODE NO.	DIM A MATING LENGTH	DIM B TAIL LENGTH	PCB THICKNESS RANGE ACCOMMODATED BY PIN'S TAIL LENGTH				
			WHEN MATING TO A 73981 OR 84688 SERIES METRAL 1000 RECEPTACLE		WHEN MATING TO A 52057 SERIES METRAL 4000 RECEPTACLE		
			ROWS A,B,C,D,E	GROUND ROW	ROWS:A,B,D,E	ROW C	GROUND ROW
01*	5.00	4.30	1.60 MIN	1.60 MIN	1.60 MIN	1.60 MIN	1.60 MIN
22		12.20	2.95 - 3.80	2.95 - 4.20	2.95 - 3.80	2.95 - 3.80	2.95 - 4.20
30		12.95	2.95 - 4.55	3.25 - 4.95	2.95 - 4.55	2.95 - 4.55	3.25 - 4.95
05		13.70	2.95 - 5.30	4.00 - 5.70	3.30 - 5.30	2.95 - 5.30	4.00 - 5.70
35		14.45	3.05 - 6.05	4.75 - 6.45	4.05 - 6.05	3.05 - 6.05	4.75 - 6.45
48		15.20	3.80 - 6.80	5.50 - 7.20	4.80 - 6.80	3.80 - 6.80	5.50 - 7.20
40		15.70	4.30 - 7.30	6.00 - 7.70	5.30 - 7.30	4.30 - 7.30	6.00 - 7.70
65		16.40	5.00 - 8.00	6.70 - 8.40	6.00 - 8.00	5.00 - 8.00	6.70 - 8.40
09		17.10	5.70 - 8.70	7.40 - 9.10	6.70 - 8.70	5.70 - 8.70	7.40 - 9.10
02*		5.75	4.30	1.60 MIN	1.60 MIN	1.60 MIN	1.60 MIN
44	12.20		2.95 - 3.80	2.95 - 4.20	2.95 - 3.80	2.95 - 3.80	2.95 - 4.20
31	12.95		2.95 - 4.55	3.25 - 4.95	2.95 - 4.55	2.95 - 4.55	3.25 - 4.95
06	13.70		2.95 - 5.30	4.00 - 5.70	3.30 - 5.30	2.95 - 5.30	4.00 - 5.70
36	14.45		3.05 - 6.05	4.75 - 6.45	4.05 - 6.05	3.05 - 6.05	4.75 - 6.45
49	15.20		3.80 - 6.80	5.50 - 7.20	4.80 - 6.80	3.80 - 6.80	5.50 - 7.20
25	15.70		4.30 - 7.30	6.00 - 7.70	5.30 - 7.30	4.30 - 7.30	6.00 - 7.70
66	16.40		5.00 - 8.00	6.70 - 8.40	6.00 - 8.00	5.00 - 8.00	6.70 - 8.40
10	17.10		5.70 - 8.70	7.40 - 9.10	6.70 - 8.70	5.70 - 8.70	7.40 - 9.10
03*	6.50		4.30	1.60 MIN	1.60 MIN	1.60 MIN	1.60 MIN
45		12.20	2.95 - 3.80	2.95 - 4.20	2.95 - 3.80	2.95 - 3.80	2.95 - 4.20
32		12.95	2.95 - 4.55	3.25 - 4.95	2.95 - 4.55	2.95 - 4.55	3.25 - 4.95
07		13.70	2.95 - 5.30	4.00 - 5.70	3.30 - 5.30	2.95 - 5.30	4.00 - 5.70
37		14.45	3.05 - 6.05	4.75 - 6.45	4.05 - 6.05	3.05 - 6.05	4.75 - 6.45
50		15.20	3.80 - 6.80	5.50 - 7.20	4.80 - 6.80	3.80 - 6.80	5.50 - 7.20
41		15.70	4.30 - 7.30	6.00 - 7.70	5.30 - 7.30	4.30 - 7.30	6.00 - 7.70
24		16.40	5.00 - 8.00	6.70 - 8.40	6.00 - 8.00	5.00 - 8.00	6.70 - 8.40
11		17.10	5.70 - 8.70	7.40 - 9.10	6.70 - 8.70	5.70 - 8.70	7.40 - 9.10

* STUB PINS - NO REAR PLUG-UP
 ** THE GREATEST RANGE OCCURS WHEN THE B DIMENSION OF PIN 'GND' IS ONE SIZE SHORTER THEN THE OTHER PINS.

mat'l code: SEE NOTE 5		tolerances unless otherwise specified		CUSTOMER	www.fcjconnect.com
lfr	ecm no.	dr	date	COPY	
AW				linear	
				angles	
				dr	
				engr	
				chr	
				oppd	
sheet index	revision sheet				product family
					METRAL 1000
					code
					213
					sheet
					3
					size
					74817
					dwg no
					code
					22526



This document is the property of and embodies CONFIDENTIAL and PROPRIETARY information of FCJ. No part of the information shown on this document may be used in any way or disclosed to others without the written consent of FCJ. Copyright FCJ.

PIN CODE NO.	DIM A MATING LENGTH	DIM B TAIL LENGTH	PCB THICKNESS RANGE ACCOMMODATED BY PIN LENGTH				
			WHEN MATING TO A 73981 OR 84688 SERIES RECEPTACLE		WHEN MATING TO A 52057 SERIES METRAL 4000 RECEPTACLE		
			ROWS A,B,C,D,E	GROUND ROW	ROWS:A,B,D,E	ROW C	GROUND ROW
04*	7.25	4.30	1.60 MIN	1.60 MIN	1.60 MIN	1.60 MIN	1.60 MIN
46		12.20	2.95 - 3.80	2.95 - 4.20	2.95 - 3.80	2.95 - 3.80	2.95 - 4.20
33		12.95	2.95 - 4.55	3.25 - 4.95	2.95 - 4.55	2.95 - 4.55	3.25 - 4.95
08		13.70	2.95 - 5.30	4.00 - 5.70	3.30 - 5.30	2.95 - 5.30	4.00 - 5.70
38		14.45	3.05 - 6.05	4.75 - 6.45	4.05 - 6.05	3.05 - 6.05	4.75 - 6.45
51		15.20	3.80 - 6.80	5.50 - 7.20	4.80 - 6.80	3.80 - 6.80	5.50 - 7.20
42		15.70	4.30 - 7.30	6.00 - 7.70	5.30 - 7.30	4.30 - 7.30	6.00 - 7.70
67		16.40	5.00 - 8.00	6.70 - 8.40	6.00 - 8.00	5.00 - 8.00	6.70 - 8.40
12		17.10	5.70 - 8.70	7.40 - 9.10	6.70 - 8.70	5.70 - 8.70	7.40 - 9.10
19*		8.00	4.30	1.60 MIN	1.60 MIN	1.60 MIN	1.60 MIN
47	12.20		2.95 - 3.80	2.95 - 4.20	2.95 - 3.80	2.95 - 3.80	2.95 - 4.20
34	12.95		2.95 - 4.55	3.25 - 4.95	2.95 - 4.55	2.95 - 4.55	3.25 - 4.95
20	13.70		2.95 - 5.30	4.00 - 5.70	3.30 - 5.30	2.95 - 5.30	4.00 - 5.70
39	14.45		3.05 - 6.05	4.75 - 6.45	4.05 - 6.05	3.05 - 6.05	4.75 - 6.45
52	15.20		3.80 - 6.80	5.50 - 7.20	4.80 - 6.80	3.80 - 6.80	5.50 - 7.20
43	15.70		4.30 - 7.30	6.00 - 7.70	5.30 - 7.30	4.30 - 7.30	6.00 - 7.70
68	16.40		5.00 - 8.00	6.70 - 8.40	6.00 - 8.00	5.00 - 8.00	6.70 - 8.40
21	17.10		5.70 - 8.70	7.40 - 9.10	6.70 - 8.70	5.70 - 8.70	7.40 - 9.10

* STUB PINS - NO REAR PLUG-UP
 ** THE GREATEST RANGE OCCURS WHEN THE B DIMENSION OF PIN 'GND' IS ONE SIZE SHORTER THEN THE OTHER PINS.

mat'l code		SEE NOTE 5		tolerances unless otherwise specified		CUSTOMER		FCJ		www.fcjconnect.com	
lfr	ecm no.	dr	date	linear	0.X ± 0.3	projection	COPY		title		
AW					.XXX ± 0.13				VERTICAL SIGNAL HDR 5 ROW		
				angles	0° ± 2°				P.F. 30 POS. SELECT LOAD STD.		
				dr	K. BELL 2000-03-29	scale	A		product family		code
				enr	M. HAHN 2000-03-29	1:1			METRAL 1000		213
				chr	M. HAHN 2000-03-29				size		sheet
				oppd	M. HAHN 2000-03-29				74817		4
sheet index	revision sheet								cage code		
									22526		4

PDM: Rev:AW

STATUS:Released

Printed: Feb 20, 2010



This document is the property of and embodies CONFIDENTIAL and PROPRIETARY information of FCI. No part of the information shown on this document may be used in any way or disclosed to others without the written consent of FCI. Copyright FCI.

METRAL P/N	ROW	CONTACT CODE					
		1	2	3	4	5	6
74817-X034 *RPU ** SEE NOTE 15 LEAD FREE OPTION	E	05	20	05	05	05	05
	D	05	20	05	05	05	05
	C	05	20	05	05	05	05
	B	05	20	05	05	05	05
	A	05	20	05	05	05	05
GND	01	01	01	01	01	01	

PCB THICKNESS RANGE FOR REAR PLUG UP APPL.: 2.30 (2.95) - 5.30 (NOT A STANDARD METRAL 1000 APPLICATION). CANNOT BE MATED TO A METRAL 4000 RECEPTACLE.

METRAL P/N	ROW	CONTACT CODE					
		1	2	3	4	5	6
74817-X039 ** SEE NOTE 15 LEAD FREE OPTION	E	01	01	01	01	01	01
	D	01	01	01	01	01	01
	C	01	01	01	01	01	01
	B	01	01	01	01	01	01
	A	01	04	01	01	01	01
GND	01	01	01	01	01	01	

PCB THICKNESS RANGE FOR REAR PLUG UP APPLICATIONS: 4.00 - 5.30. CANNOT BE MATED TO A METRAL 4000 RECEPTACLE.

METRAL P/N	ROW	CONTACT CODE					
		1	2	3	4	5	6
74817-X040 *RPU ** SEE NOTE 15 LEAD FREE OPTION	E	08	06	06	06	06	06
	D	08	06	06	06	06	06
	C	06	06	06	06	06	06
	B	08	06	06	06	06	06
	A	08	06	06	06	06	06
GND	06	06	06	06	06	06	

PCB THICKNESS RANGE FOR REAR PLUG UP APPLICATIONS: 3.25 - 4.95 FOR METRAL 1000 APPLICATIONS. CANNOT BE MATED TO A METRAL 4000 RECEPTACLE.

METRAL P/N	ROW	CONTACT CODE					
		1	2	3	4	5	6
74817-X044 *RPU ** SEE NOTE 15 LEAD FREE OPTION	E	45	45	45	45	45	45
	D	45	45	45	45	22	45
	C	45	45	45	45	45	45
	B	45	45	45	45	45	45
	A	47	47	47	47	47	47
GND	22	22	22	22	22	22	

PCB THICKNESS RANGE FOR REAR PLUG UP APPL.: 2.95 - 3.80 FOR MATING TO METRAL 1000 RECEPTACLE. CANNOT BE MATED TO METRAL 4000 RECEPTACLES.

METRAL P/N	ROW	CONTACT CODE					
		1	2	3	4	5	6
74817-X045 ** SEE NOTE 15 LEAD FREE OPTION	E	02	02	02	02	02	02
	D	02	02	02	02	02	02
	C	02	02	02	02	02	02
	B	02	02	02	02	02	02
	A	02	01	02	02	02	02
GND	01	01	01	01	01	01	

PCB THICKNESS RANGE FOR REAR PLUG UP APPL.: 2.95 - 3.80 FOR BOTH METRAL 1000 AND 4000 RECEPTACLE. MATING (NOT A STANDARD METRAL 1000 APPLICATION)

METRAL P/N	ROW	CONTACT CODE					
		1	2	3	4	5	6
74817-X037 ** SEE NOTE 15 LEAD FREE OPTION	E	02	02	02	02	02	02
	D	02	02	02	02	02	02
	C	01	02	02	02	02	02
	B	01	01	01	01	01	01
	A	02	02	02	02	02	02
GND	01	01	01	01	01	01	

METRAL P/N	ROW	CONTACT CODE					
		1	2	3	4	5	6
74817-X041 ** SEE NOTE 15 LEAD FREE OPTION	E	02	02	02	02	04	02
	D	02	02	02	02	02	02
	C	02	02	02	02	02	04
	B	02	02	02	02	02	02
	A	02	02	02	02	02	04
GND	01	01	01	01	01	01	

METRAL P/N	ROW	CONTACT CODE					
		1	2	3	4	5	6
74817-X042 *RPU ** SEE NOTE 15 LEAD FREE OPTION	E	08	06	06	06	06	06
	D	08	06	06	06	06	06
	C	08	06	06	06	06	06
	B	08	06	06	06	06	06
	A	08	06	06	06	06	06
GND	30	30	30	30	30	30	

PCB THICKNESS RANGE FOR REAR PLUG UP APPLICATIONS: 3.25 - 4.95 FOR METRAL 1000 APPLICATIONS. CANNOT BE MATED TO A METRAL 4000 RECEPTACLE.

METRAL P/N	ROW	CONTACT CODE					
		1	2	3	4	5	6
74817-X043 ** SEE NOTE 15 LEAD FREE OPTION	E	03	03	03	03	03	03
	D	03	03	03	03	01	03
	C	03	03	03	03	03	03
	B	03	03	03	03	03	03
	A	19	19	19	19	19	19
GND	01	01	01	01	01	01	

METRAL P/N	ROW	CONTACT CODE					
		1	2	3	4	5	6
74817-X046 *RPU ** SEE NOTE 15 LEAD FREE OPTION	E	22	22	22	22	22	22
	D	22	22	22	22	22	22
	C	45	45	45	45	45	45
	B	22	22	22	22	22	22
	A	22	22	22	22	22	22
GND	01	22	22	22	22	01	

METRAL P/N	ROW	CONTACT CODE					
		1	2	3	4	5	6
74817-X047 ** SEE NOTE 15 LEAD FREE OPTION	E	02	01	02	02	02	02
	D	02	02	02	02	02	02
	C	02	02	02	02	02	02
	B	02	02	02	02	02	02
	A	02	02	02	02	02	02
GND	01	01	01	01	01	01	

METRAL P/N	ROW	CONTACT CODE					
		1	2	3	4	5	6
74817-X048 ** SEE NOTE 15 LEAD FREE OPTION	E	02	02	02	02	02	02
	D	02	02	02	02	02	02
	C	02	02	02	02	02	04
	B	02	02	02	02	02	02
	A	02	02	02	02	02	02
GND	02	02	02	02	02	02	

- * REAR PLUG-UP PART NUMBER WITH PIN ALIGNER
- ** CANNOT BE MATED TO A METRAL 4000 RECEPTACLE
- *** REAR PLUG-UP PART NUMBER WITHOUT PIN ALIGNER

mat'l code		SEE NOTE 5		tolerances unless otherwise specified		CUSTOMER		FCI		www.fciconnect.com	
lfr	ecr no.	dr	date	linear	0.X ± 0.3	projection	COPY	title	VERTICAL SIGNAL HDR 5 ROW P.F. 30 POS. SELECT LOAD STD.		
AW				angles	.xxx ± .051			product family	METRAL 1000		code
				dr	0° ± 2°			size	dwg no		213
				enr	K. BELL 2000-03-29	scale		A	74817		sheet
				ctr	M. HAHN 2000-03-29	2:1					7
				oppd	M. HAHN 2000-03-29						
sheet index	revision	sheet									



This document is the property of and embodies CONFIDENTIAL and PROPRIETARY information of FCI. No part of the information shown on this document may be used in any way or disclosed to others without the written consent of FCI. Copyright FCI.

METRAL P/N	ROW	CONTACT CODE					
		1	2	3	4	5	6
74817-X049 SEE NOTE 15 LEAD FREE OPTION	E	02	02	02	02	02	02
	D	02	02	02	02	02	02
	C	04	02	02	02	02	02
	B	02	02	02	02	02	02
	A	02	02	02	02	02	02
GND	02	02	02	02	02	02	

METRAL P/N	ROW	CONTACT CODE					
		1	2	3	4	5	6
74817-X050 ** SEE NOTE 15 LEAD FREE OPTION	E	02	02	02	02	02	04
	D	02	02	02	02	02	04
	C	02	02	02	02	02	04
	B	02	02	02	02	02	04
	A	02	01	02	02	02	04
GND	02	02	02	02	02	02	

METRAL P/N	ROW	CONTACT CODE					
		1	2	3	4	5	6
74817-X051 ** SEE NOTE 15 LEAD FREE OPTION	E	04	02	02	02	02	02
	D	04	02	02	02	02	02
	C	04	02	02	02	02	02
	B	04	02	02	02	02	02
	A	04	01	02	02	02	02
GND	02	02	02	02	02	02	

METRAL P/N	ROW	CONTACT CODE					
		1	2	3	4	5	6
74817-X052 ***RPU SEE NOTE 15 LEAD FREE OPTION	E	05	05	05	05	05	05
	D	05	05	05	05	05	05
	C	05	05	05	05	05	05
	B	05	05	05	05	05	05
	A	05	05	05	05	05	05
GND	01	01	01	01	01	01	

METRAL P/N	ROW	CONTACT CODE					
		1	2	3	4	5	6
74817-X053 ***RPU SEE NOTE 15 LEAD FREE OPTION	E	05	20	05	05	05	05
	D	05	20	05	05	05	05
	C	05	20	05	05	05	05
	B	05	20	05	05	05	05
	A	05	20	05	05	05	05
GND	01	01	01	01	01	01	

- * REAR PLUG-UP PART NUMBER WITH PIN ALIGNER
- ** CANNOT BE MATED TO A METRAL 4000 RECEPTACLE
- *** REAR PLUG-UP PART NUMBER WITHOUT PIN ALIGNER

METRAL P/N	ROW	CONTACT CODE					
		1	2	3	4	5	6
74817-X054 ***RPU SEE NOTE 15 LEAD FREE OPTION	E	22	22	22	22	22	22
	D	22	22	22	22	22	22
	C	45	45	45	45	45	45
	B	22	22	22	22	22	22
	A	22	22	22	22	22	22
GND	01	22	22	22	22	01	

METRAL P/N	ROW	CONTACT CODE					
		1	2	3	4	5	6
74817-X055 ** SEE NOTE 15 LEAD FREE OPTION	E	04	02	02	02	02	02
	D	04	02	02	02	02	02
	C	04	02	02	02	02	02
	B	04	02	02	02	02	02
	A	04	02	02	02	02	02
GND	-	02	02	02	02	-	

METRAL P/N	ROW	CONTACT CODE					
		1	2	3	4	5	6
74817-X056 SEE NOTE 15 LEAD FREE OPTION	E	02	02	02	02	02	02
	D	02	02	02	02	02	02
	C	04	02	02	02	02	02
	B	02	02	02	02	02	02
	A	02	02	02	02	02	02
GND	-	02	02	02	02	-	


METRAL P/N	ROW	CONTACT CODE					
		1	2	3	4	5	6
74817-X057 *RPU SEE NOTE 15 LEAD FREE OPTION	E	22	22	22	01	01	01
	D	22	22	22	01	01	01
	C	22	22	22	01	01	01
	B	22	22	22	01	01	01
	A	22	22	22	01	01	01
GND	22	22	22	22	22	22	

mat'l code: SEE NOTE 5		tolerances unless otherwise specified		CUSTOMER		FCI	
lfr	ecr no.	dr	date	linear	projection	www.fciconnect.com	
AW				0.XX ±0.13	MM	title VERTICAL SIGNAL HDR 5 ROW	
				.XXX ±.051	MM	P.F. 30 POS. SELECT LOAD STD.	
				angles 0° ±2°	MM	product family METRAL 1000	
		dr	K. BELL 2000-03-29		MM	code 213	
		engr	J. VOLSTORF 2001-05-23		MM	sheet 8	
		chr	M. HAHN 2000-03-29		MM	size 74817	
		appd	M. HAHN 2000-03-29		MM	dwg no	
sheet index	revision sheet				scale 2:1	cage code 22526	

PRODUCT NUMBER
SEE SHEET 1

NOTES:

- SEE APPLICATION SPECIFICATION GS-20-010 FOR INFORMATION ON AVAILABLE TOOLING, CIRCUIT BOARD DESIGN CONSIDERATIONS, REPAIR PROCEDURES AND PRODUCT OFFERINGS.
- SEE FC1 PUBLICATION 950511-028 FOR "ELECTRICAL PERFORMANCE DATA FOR DIFFERENTIAL APPLICATIONS."
- SEE FC1 PUBLICATION 950511-029 FOR "ELECTRICAL PERFORMANCE DATA FOR SINGLE-ENDED APPLICATION."
- UNLESS OTHERWISE SPECIFIED, ALL DIMENSIONS AND TOLERANCES ARE IN ACCORDANCE WITH ASME Y14.5, 1994
- HOUSING MATERIAL: LIQUID CRYSTAL POLYMER, 30% GLASS FILLED, FLAME RETARDANT PER UL 94-V0.
PIN MATERIAL: PHOSPHOR BRONZE
GROUND SPRING MATERIAL: PHOSPHOR BRONZE
- PLATING INFORMATION: PLATING ON CONTACT AREA MEETS THE PERFORMANCE LEVELS SHOWN IN TABLE ON SHEET 1. PLATING OF "LF" TAILS IS Sn. PLATING ON ALL OTHER TAILS IS SnPb.
- DIMENSIONAL RESTRICTIONS OF PINS IN HEADERS.
FOR MATING WITH METRAL 1000 RECEPTACLES
DIM A : 5.00mm MIN, 8.00mm MAX FOR ROWS A-E
DIM A : 5.00mm MIN, 5.75mm MAX FOR ROW GND NEXT TO ROW A
DIM C : 5.00mm MIN, 8.00mm MAX FOR ROWS A-E
DIM C : 4.60mm MIN, 6.30mm MAX FOR ROW GND NEXT TO ROW A
FOR MATING WITH METRAL 4000 RECEPTACLES
DIM A : 5.00mm MIN, 6.50mm MAX FOR ROWS A, B, D & E
DIM A : 5.00mm MIN, 8.00mm MAX FOR ROW C
DIM A : 5.00mm MIN, 5.75mm MAX FOR ROW GND NEXT TO ROW A
DIM C : 5.00mm MIN, 7.00mm MAX FOR ROWS A, B, D & E
DIM C : 5.00mm MIN, 8.00mm MAX FOR ROW C
DIM C : 4.60mm MIN, 6.30mm MAX FOR ROW GND NEXT TO ROW A

- THE MIN PCB THICKNESS FOR REAR PLUG-UP APPLICATIONS IS 2.9mm SINCE THE COMPLAINT SECTIONS OF THE GROUND SPRING OF THE HEADER DIRECTLY OPPOSE THE GROUND SPRING OF THE SHROUD. THE MIN PCB THICKNESS FOR FRONT PLUG-UP ONLY APPLICATIONS IS 1.6mm.
- THESE HOLES ARE NEEDED FOR REAR PLUG-UP DESIGNS USING A SHROUD AND MAY BE OMITTED FOR FRONT PLUG-UP ONLY DESIGNS.
- THE 'CONNECTOR OUTLINE' IS THE MIN OUTLINE REQUIRED. TO DETERMINE THE OUTLINE NECESSARY TO PERMIT THE VARIOUS TYPES OF REPAIR OPERATIONS, SEE APPLICATION SPECIFICATION GS-20-010.
- CURRENT RATING: 1 AMP PER PIN
- TEMPERATURE RANGE: -55°C TO +105°C
- P/N 74817-XZZZLF

 - LEAD FREE (OPTIONAL)
 - SELECT LOAD PATTERN
 - PLATING CODE
- THE PRODUCTS WHERE THE PART NUMBERS ENDS IN LF MEET EUROPEAN UNION DIRECTIVES AND OTHER COUNTRY REGULATIONS AS DESCRIBED IN GS-22-008. ALL PRODUCTS WILL WITHSTAND EXPOSURE TO 260°C FOR 60 SECONDS IN A CONVECTION, INFRA-RED OR VAPOR PHASE REFLOW OVEN.
- FOR LEAD FREE PART NUMBERS ADD 'LF' SUFFIX.
EXAMPLE: 74817-XYYYLF
- PIN TYPE IS AT THE MANUFACTURERS OPTION AND CAN BE EITHER BABY-H OR EYE OF THE NEEDLE STYLE

mat'l code SEE NOTE 5				tolerances unless otherwise specified		CUSTOMER		FCI www.fciconnect.com	
ltr	ecm no.	dr	date	linear	0. XX ±0.13	projection	COPY		
AW				angles	.XXX ±.051		title VERTICAL SIGNAL HDR 5 ROW P.F. 30 POS. SELECT LOAD STD.		
				dr	0° ±2°		product family	METRAL 1000	code
				engr	K. BELL 2000-03-29	scale	size	dwg no	213
				chr	M. HAHN 2000-03-29	1:1	A	74817	sheet
				oppd	M. HAHN 2000-03-29				9
sheet index	revision sheet								

This document is the property of and embodies CONFIDENTIAL and PROPRIETARY information of FCI. No part of the information shown on this document may be used in any way or disclosed to others without the written consent of FCI. Copyright FCI.