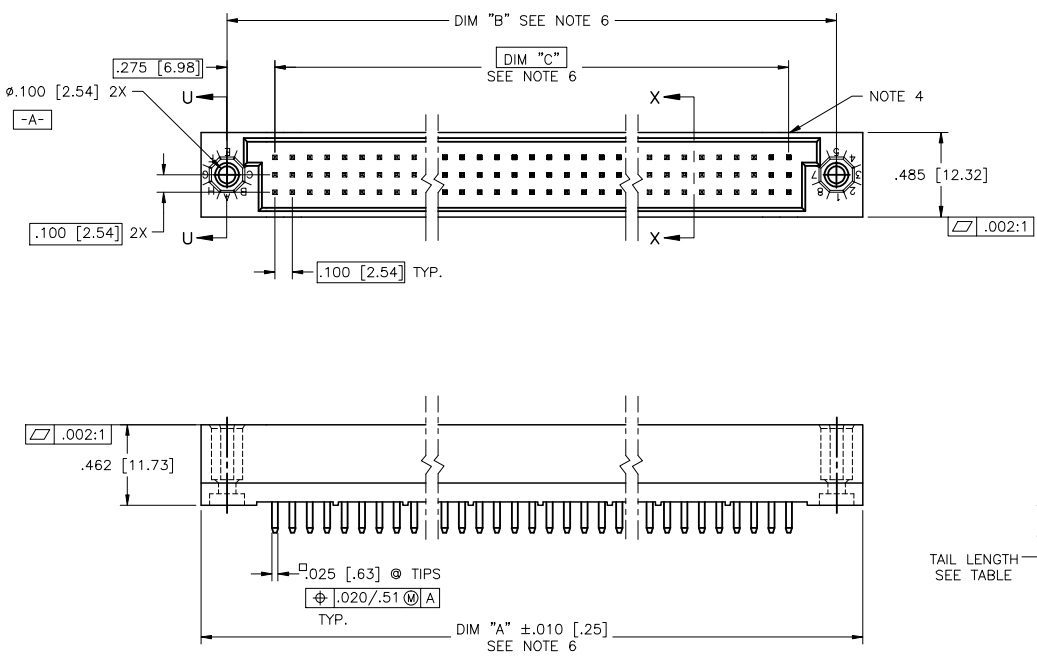


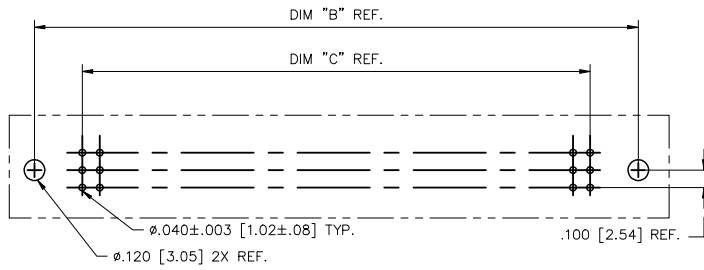
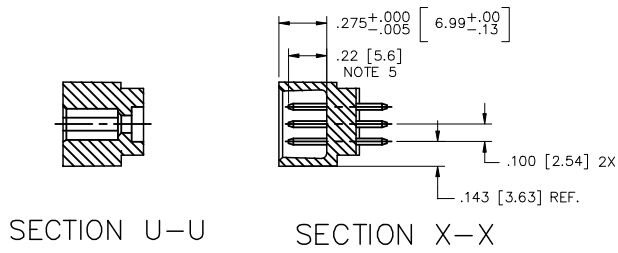
PRODUCT NUMBER  
SEE TABLE



mal't. code SEE NOTE 3				surface ISO 1302	tolerance ISO 146 ISO 1001	projection INCH/MM	product family HPC
lfr	ecr no	dr	date	tolerances unless otherwise specified		linear	title
H	V40286	PDP	1/20/94	angles	linear	INCH/MM	3 ROW VERTICAL HEADER
J	V90017	HTB	1/7/99	0'±2'	linear	scale 1:1	W/SOLDER TAIL PINS, 0 G.P.
K	V00272	JWS	2/1/00				dwg no
L	V05-0753	DAI	10/03/05	dr	D.SHEAFFER	3/14/91	sheet 1 of 4
M	V05-1039	DAI	11/11/05	eng	S.CLARK	3/14/91	size
N	M06-0283	MHT	7/27/06	chr	S.CLARK	3/14/91	A3
P	M09-0029	MHT	2/20/09	appd	S.CLARK	3/14/91	type
sheet	revision	P	P	P	P		Product Customer Drawing
index	sheet	1	2	3	4		

PDM: Rev:P STATUS:Released Printed: Feb 06, 2010

PRODUCT NUMBER  
SEE TABLE

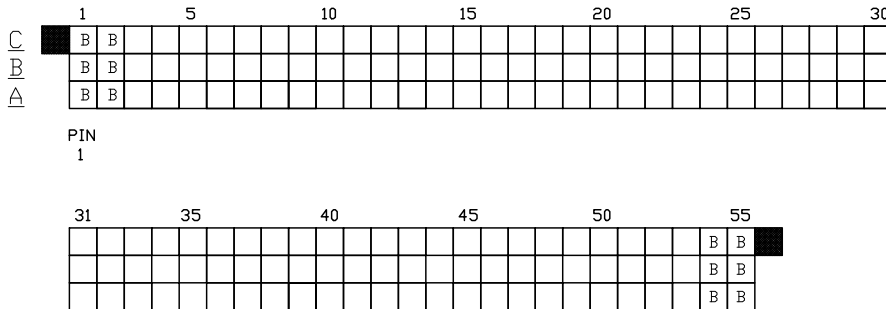


RECOMMENDED PCB LAYOUT  
(ALL HOLES LOCATED ON .100/2.54 GRID  
UNLESS OTHERWISE SPECIFIED)

mal't. code SEE NOTE 3		surface ISO 1902	tolerance ISO 1436 ISO 1001	projection 1st angle	product family HPC
lfr	ecn no	dr	date	title 3 ROW VERTICAL HEADER W/SOLDER TAIL PINS, 0 G.P.	
P				INCH/MM	dwg no 50012
				scale 1:1	sheet 2 of 4 size A3
		dr	D.SHEAFFER 3/14/91	FCJ	type Product Customer Drawing
		engr	S.CLARK 3/14/91		
		chr	S.CLARK 3/14/91		
		appd	S.CLARK 3/14/91		
sheet index	revision sheet				

PRODUCT NUMBER  
SEE TABLE

50012-XX010 AND 50012-XX010LF ONLY



CUSTOMER NOTE: END GUIDE PINS ARE SUGGESTED IN YOUR APPLICATION TO PREVENT STUBBING OF THE .260 MATING LENGTH SIGNAL PINS.

NOTES FOR 50012-XX010 AND 50012-XX010LF ONLY:

1. ALL POSITIONS ARE LOADED WITH "A", EXCEPT AS SHOWN.
2. COLUMN 1, ROW A IS DESIGNATED AS SIGNAL PIN 1, AS VIEWED FROM THE MATING FACE.
3. SIGNAL DATA FOR 50012-XX010 AND 50012-XX010LF:  
SIZE 3 X 55  
TOTAL NO. OF POSITIONS - 165  
NO. OF POSITIONS LOADED - 165

ITEM KEY	QTY.	MATING LENGTH	TAIL LENGTH
A	153	.180 / 4.57	.177 / 4.50
B	12	.260 / 6.60	.177 / 4.50

mal't. code	SEE NOTE 3	surface	ISO 1902	tolerance	ISO 146 ISO 1001	projection	product family	HPC
lfr	ecn no	dr	date	tolerances unless otherwise specified		INCH/MM	title	
P				angles	linear		3 ROW VERTICAL HEADER	
				0'±2'	XX±.01/XX±.03	scale	W/SOLDER TAIL PINS, 0 G.P.	
		dr	D.SHEAFFER	3/14/91	XXX±.005/XX±.013	1:1	dwg no	sheet 3 of 4
		engr	S.CLARK	3/14/91	XXXX±.0020/XXX±.0051		50012	size A3
		chr	S.CLARK	3/14/91			type Product Customer Drawing	
		appd	S.CLARK	3/14/91				
sheet index	revision sheet							

PRODUCT NUMBER	NUMBER OF POSITIONS SEE NOTE 2	TAIL LENGTH ±.015/0.38	TERMINAL PLATING NOTE 9
50012-1YYA	YYY	.177/4.50	30µ"/.76µ GOLD
50012-1YYC	YYY	.533/13.54	30µ"/.76µ GOLD
50012-1YYD	YYY	.733/18.62	30µ"/.76µ GOLD
50012-1YYG	YYY	.250/6.35	30µ"/.76µ GOLD
50012-1YYJ	YYY	.120/3.05	30µ"/.76µ GOLD
50012-3YYA	YYY	.177/4.50	50µ"/1.27µ GOLD
50012-3YYC	YYY	.533/13.54	50µ"/1.27µ GOLD
50012-3YYD	YYY	.733/18.62	50µ"/1.27µ GOLD
50012-3YYG	YYY	.250/6.35	50µ"/1.27µ GOLD
50012-3YYJ	YYY	.120/3.05	50µ"/1.27µ GOLD
50012-5YYA	YYY	.177/4.50	30µ"/.76µ GXT
50012-5YYB	YYY	.190/4.82	30µ"/.76µ GXT
50012-5YYBLF	YYY	.190/4.82	30µ"/.76µ GXT
50012-5YYC	YYY	.533/13.54	30µ"/.76µ GXT
50012-5YYCLF	YYY	.533/13.54	30µ"/.76µ GXT
50012-5YYD	YYY	.733/18.62	30µ"/.76µ GXT
50012-5YYDLF	YYY	.733/18.62	30µ"/.76µ GXT
50012-5YYG	YYY	.250/6.35	30µ"/.76µ GXT
50012-5YYGLF	YYY	.250/6.35	30µ"/.76µ GXT
50012-5YYJ	YYY	.120/3.05	30µ"/.76µ GXT
50012-5YYJLF	YYY	.120/3.05	30µ"/.76µ GXT
50012-XX010	165	SEE SHEET 3	30µ"/.76µ Au
50012-XX010LF	165	SEE SHEET 3	30µ"/.76µ GXT

- ④ COMPANY NAME, PART NUMBER AND LOT CODE TO APPEAR ON THIS SURFACE PER BUS-12-108.
- ⑤ REFERENCE 50804 FOR FIRST MATE LAST BREAK AVAILABLE OPTIONS AND FOR SELECTIVELY LOADED HEADER WORKSHEET.
- ⑥ LENGTH FORMULAS:  
DIM "A" .100/2.54 x NO. OF COLUMNS +.75/19.1  
DIM "B" .100/2.54 x NO. OF COLUMNS +.450/11.43  
DIM "C" .100/2.54 x NO. OF COLUMNS -.100/2.54
7. THIS PRODUCT (WITH "LF" SUFFIX) MEETS EUROPEAN UNION DIRECTIVES AND OTHER COUNTRY REGULATIONS AS DESCRIBED IN GS-22-008.
8. THIS HOUSING WILL WITHSTAND EXPOSURE TO 260° C PEAK TEMPERATURE FOR 10-30 SECONDS IN A CONVECTION, INFRA-RED OR VAPOR PHASE REFLOW OVEN.
- ⑨ PLATING OPTIONS:  
MAY BE EITHER GOLD OR GXT PLATED AT MANUFACTURE'S OPTION

NOTES:

- ① PRODUCT NUMBERING CODE:  
50012 - X YYY Z LF  
  - X LEAD FREE (OPTIONAL)
  - YYY TAIL LENGTH SEE TABLE
  - Z NO. OF POSITIONS SEE NOTE 2
  - LF PLATING SEE TABLE
  - BASE NUMBER

- PRODUCT NUMBERING CODE FOR SELECT LOAD/FMLB PART NUMBERS:  
50012 - XXYYY LF  
  - XX LEAD FREE (OPTIONAL)
  - YYY SEQUENCE NUMBER ALWAYS 'XX'
  - LF BASE NUMBER

- ② THIS PRODUCT IS CONFIGURED IN SIZES OF 6 thru 80 COLUMNS IN INCREMENTS OF ONE.  
i.e.: 6,7,8,9,.....78,79,80.
- ③ HOUSING MATERIAL: GLASS AND MINERAL FILLED HIGH TEMP. THERMOPLASTIC. FLAME RETARDANT PER UL94V-0. COLOR: BLACK.  
PIN MATERIAL: PHOS BRONZE

mal't. code SEE NOTE 3		surface ISO 1902 ✓ ISO 146 ISO 1001	tolerance ISO 146 ISO 1001	projection 1st angle	product family HPC
lfr	ecn no	dr	date	title 3 ROW VERTICAL HEADER W/SOLDER TAIL PINS, 0 G.P.	
P				INCH/MM	dwg no 50012
				scale 1:1	sheet 4 of 4 size A3
				type Product Customer Drawing	
sheet index	revision sheet				