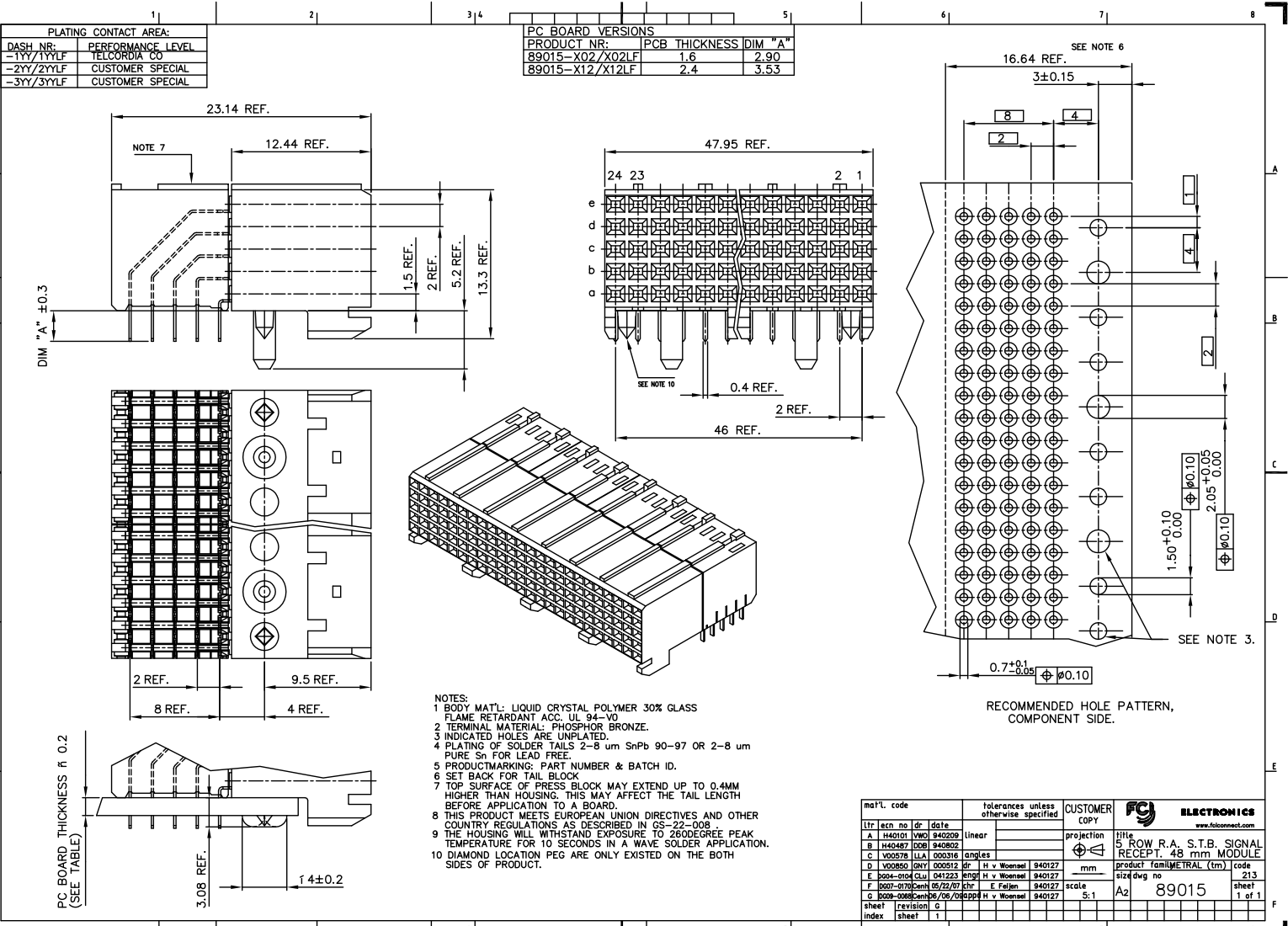


PC BOARD VERSIONS		
PRODUCT NR:	PCB THICKNESS	DIM "A"
89015-X02/X02LF	1.6	2.90
89015-X12/X12LF	2.4	3.53

PLATING CONTACT AREA:	
DASH NR:	PERFORMANCE LEVEL
-1Y/1Y1LF	TELCOORDIA CO
-2Y/2Y1LF	CUSTOMER SPECIAL
-3Y/3Y1LF	CUSTOMER SPECIAL



- NOTES:
- 1 BODY MATL: LIQUID CRYSTAL POLYMER 30% GLASS  
FLAME RETARDANT ACC. UL 94-V0
  - 2 TERMINAL MATERIAL: PHOSPHOR BRONZE.
  - 3 INDICATED HOLES ARE UNPLATED.
  - 4 PLATING OF SOLDER TAILS 2-8 um SnPb 90-97 OR 2-8 um PURE Sn FOR LEAD FREE.
  - 5 PRODUCT MARKING: PART NUMBER & BATCH ID.
  - 6 SET BACK FOR TAIL BLOCK
  - 7 TOP SURFACE OF PRESS BLOCK MAY EXTEND UP TO 0.4MM HIGHER THAN HOUSING. THIS MAY AFFECT THE TAIL LENGTH BEFORE APPLICATION TO A BOARD.
  - 8 THIS PRODUCT MEETS EUROPEAN UNION DIRECTIVES AND OTHER COUNTRY REGULATIONS AS DESCRIBED IN GS-22-008
  - 9 THE HOUSING WILL WITHSTAND EXPOSURE TO 260DEGREE PEAK TEMPERATURE FOR 10 SECONDS IN A WAVE SOLDER APPLICATION.
  - 10 DIAMOND LOCATION PEG ARE ONLY EXISTED ON THE BOTH SIDES OF PRODUCT.

maFL code		tolerances unless otherwise specified		CUSTOMER COPY	
litr	accr no	dr	date	projection	title
A	1440121	lvaci	940209		5 ROW R.A. S.T.B. SIGNAL RECEPT. 48 mm MODULE
B	1440487	0008	940802		product family
C	V00578	LLA	000316	angles	product family
D	V00850	00VY	000512	dr	mm
E	2004-0104	Clu	041223	kl06	scale
F	0009-0170	Canh	05/22/07	chr	5:1
G	0009-0088	Canh	06/08/08	app	A2
sheet	revision	G			89015
index	sheet	1			213
					1 of 1

PDM: Rev:G STATUS:Released Printed: Sep 15, 2009

All rights reserved. Reproduction in whole or in part without the written permission of FCI is prohibited. FCI is not responsible for any damage or loss of data resulting from the use of this product.