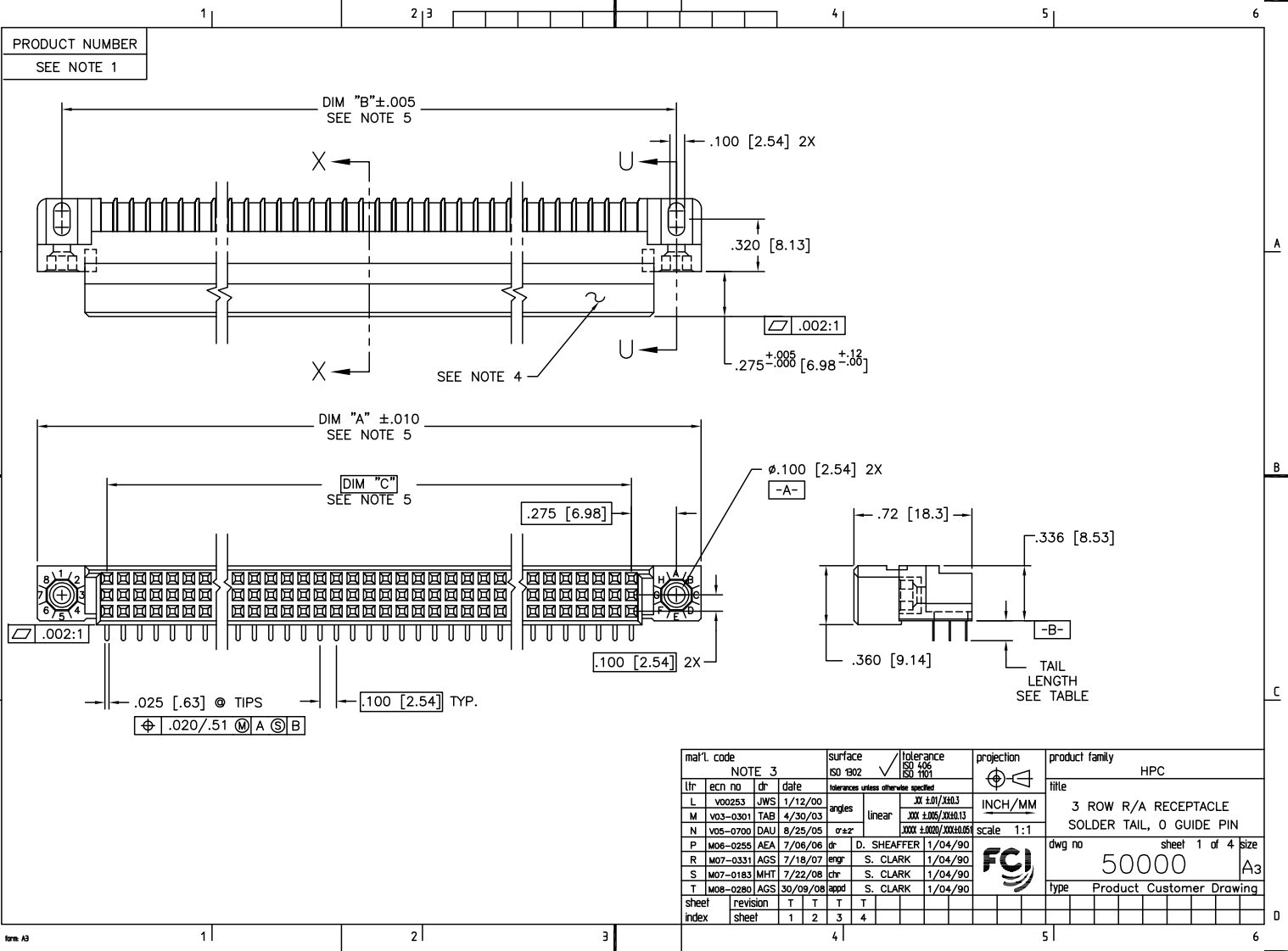




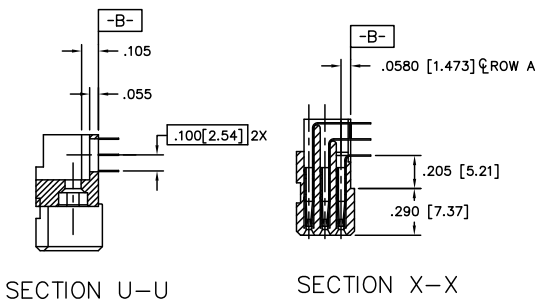
Copyright FCI



| | | | | | | | |
|------------|----------|---------|----------|---------------------------------------|------------------|------------|--------------------------|
| mat'l code | | NOTE 3 | | surface | tolerance | projection | product family |
| ISO 1902 | | ISO 406 | | ISO 1101 | XX ±.01/XX.03 | INCH/MM | HPC |
| ltr | ec'n no | dr | date | tolerances unless otherwise specified | | scale 1:1 | title |
| L | v00253 | JWS | 1/12/00 | angles | linear | | |
| M | v03-0301 | TAB | 4/30/03 | | XXX ±.005/XXX.13 | | SOLDER TAIL, 0 GUIDE PIN |
| N | v05-0700 | DAU | 8/25/05 | σ±z | XXX ±.002/XXX.05 | | dwg no |
| P | m06-0255 | AEA | 7/06/06 | dr | D. SHEAFFER | 1/04/90 | sheet 1 of 4 size |
| R | m07-0331 | AGS | 7/18/07 | engr | S. CLARK | 1/04/90 | 50000 |
| S | m07-0183 | MHT | 7/22/08 | chr | S. CLARK | 1/04/90 | A3 |
| T | m08-0280 | AGS | 30/09/08 | appd | S. CLARK | 1/04/90 | Type |
| sheet | revision | T | T | T | T | | Product Customer Drawing |
| index | sheet | 1 | 2 | 3 | 4 | | |

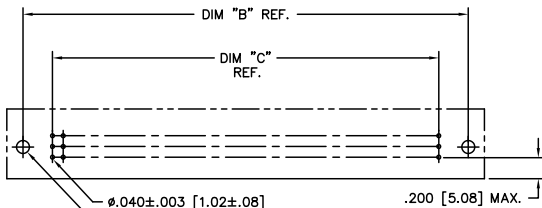
PDM: Rev:T STATUS:Released Printed: Feb 18, 2010

PRODUCT NUMBER
SEE TABLE



SECTION U-U

SECTION X-X



RECOMMENDED PCB LAYOUT
(ALL HOLES LOCATED ON .100 [2.54] GRID
UNLESS OTHERWISE SPECIFIED)

NOTES:

① PRODUCT NUMBERING CODE:
50000 - X YYY Z LF
LEAD FREE (OPTIONAL)
TAIL LENGTH (SEE TABLE)
NO. OF POSITIONS (SEE NOTE 2)
PLATING (SEE TABLE)
BASE NUMBER

PRODUCT NUMBERING CODE FOR
SELECT LOAD PART NUMBERS:
50000 - XXXXX LF
LEAD FREE (OPTIONAL)
SEQUENCE NUMBER
ALWAYS 'XX'
BASE NUMBER

- ② THIS PRODUCT IS CONFIGURED IN SIZES OF 6 THRU 80 COLUMNS IN INCREMENTS OF ONE. I.E.: 6,7,8,9.....79,80.
- ③ HOUSING MATERIAL: GLASS AND MINERAL FILLED THERMOPLASTIC. FLAME RETARDANT PER UL94V-0. COLOR: BLACK
CONTACT MATERIAL: BeCu
- ④ COMPANY NAME, PART NUMBER AND LOT CODE TO APPEAR ON THIS SURFACE PER BUS-12-108.
- ⑤ LENGTH FORMULAS:
DIM A = .100/2.54 X NO. OF COLUMNS + .75/19.1
DIM B = .100/2.54 X NO. OF COLUMNS + .450/11.43
DIM C = .100/2.54 X NO. OF COLUMNS - .100/2.54
- ⑥ PRODUCT WITH "LF" SUFFIX MEETS EUROPEAN UNION DIRECTIVES AND OTHER COUNTRY REGULATIONS AS DESCRIBED IN GS-22-008.
7. THIS HOUSING WILL WITHSTAND EXPOSURE TO 260° C PEAK TEMPERATURE FOR 10-30 SECONDS IN A CONVECTION, INFRA-RED OR VAPOR PHASE REFLOW OVEN.
- ⑧ PLATING OPTION:
MAY BE EITHER GOLD OR GXT PLATED AT MANUFACTURER'S OPTION.

| | | | | | |
|---------------------------------------|----------------|----------------|---------------------|--|----------------|
| mat'l code | | surface | tolerance | projection | product family |
| NOTE 3 | | ISO 1902 | ISO 406 ISO 1101 | | HPC |
| ltr | ecrn no | dr | date | title | |
| T | | | | 3 ROW R/A RECEPTACLE SOLDER TAIL, 0 GUIDE PIN | |
| tolerances unless otherwise specified | | | | INCH/MM | scale 1:1 |
| angles | linear | XX ±.01/.013 | XXX ±.005/.013 | dwg no | |
| ozz | | XXX ±.002/.005 | | sheet 2 of 4 size | |
| dr | D. SHEAFFER | 1/04/90 | | 50000 | |
| enrg | S. CLARK | 1/04/90 | | A3 | |
| chr | S. CLARK | 1/04/90 | | Type Product Customer Drawing | |
| appd | S. CLARK | 1/04/90 | | | |
| sheet index | revision sheet | | | | |

| PRODUCT NUMBER NOTE 1 | NUMBER OF POSITIONS NOTE 2 | TAIL LENGTH | SOLDER TAIL PLATING | CONTACT PLATING (NOTE 8) |
|--------------------------|----------------------------------|---------------------|------------------------|--------------------------------|
| 50000-1YYYE | YYY | .125±.010/3.18±0.25 | TIN-LEAD | 30u"/0.76um Au |
| 50000-1YYYELF | YYY | .125±.010/3.18±0.25 | TIN | 30u"/0.76um Au |
| 50000-1YYYF | YYY | .145±.010/3.68±0.25 | TIN-LEAD | 30u"/0.76um Au |
| 50000-1YYYH | YYY | .180±.010/4.57±0.25 | TIN-LEAD | 30u"/0.76um Au |
| 50000-1YYYZ | YYY | .220±.010/5.59±0.25 | TIN-LEAD | 30u"/0.76um Au |
| 50000-3YYYE | YYY | .125±.010/3.18±0.25 | TIN-LEAD | 50u"/1.27um Au |
| 50000-3YYYF | YYY | .145±.010/3.68±0.25 | TIN-LEAD | 50u"/1.27um Au |
| 50000-3YYYH | YYY | .180±.010/4.57±0.25 | TIN-LEAD | 50u"/1.27um Au |
| 50000-3YYYZ | YYY | .220±.010/5.59±0.25 | TIN-LEAD | 50u"/1.27um Au |
| 50000-5YYYE | YYY | .125±.010/3.18±0.25 | TIN-LEAD | 30u"/0.76um GXT |
| 50000-5YYYELF | YYY | .125±.010/3.18±0.25 | TIN | 30u"/0.76um GXT |
| 50000-5YYYF | YYY | .145±.010/3.68±0.25 | TIN-LEAD | 30u"/0.76um GXT |
| 50000-5YYYFLF | YYY | .145±.010/3.68±0.25 | TIN | 30u"/0.76um GXT |
| 50000-5YYYH | YYY | .180±.010/4.57±0.25 | TIN-LEAD | 30u"/0.76um GXT |
| 50000-5YYYHLF | YYY | .180±.010/4.57±0.25 | TIN | 30u"/0.76um GXT |
| 50000-5YYYZ | YYY | .220±.010/5.59±0.25 | TIN-LEAD | 30u"/0.76um GXT |
| 50000-5YYYZLF | YYY | .220±.010/5.59±0.25 | TIN | 30u"/0.76um GXT |

| | | | | | |
|-------------|----------------|---------------------|----------------------------------|----------------|---|
| mat'l code | NOTE 3 | surface ISO 1902 | tolerance ISO 406 ISO 1101 | projection | product family HPC |
| ltr | ecrn no | dr | date | INCH/MM | title 3 ROW R/A RECEPTACLE SOLDER TAIL, 0 GUIDE PIN |
| T | | | | scale 1:1 | dwg no 50000 |
| | | | | | sheet 3 of 4 size A3 |
| | | | | | type Product Customer Drawing |
| dr | D. SHEAFFER | 1/04/90 | | | |
| engr | S. CLARK | 1/04/90 | | | |
| chr | S. CLARK | 1/04/90 | | | |
| appd | S. CLARK | 1/04/90 | | | |
| sheet index | revision sheet | | | | |

PDM: Rev:T STATUS:Released Printed: Feb 18, 2010

PRODUCT NUMBER
SEE TABLE

50000-XX001 OR 50000-XX001LF ONLY

| | | | | | | | | | |
|---|----|---|----|---|----|---|----|---|----|
| | 55 | | 50 | | 45 | | 40 | | 36 |
| C | C | C | C | C | C | C | C | C | C |
| B | B | B | B | B | B | B | B | B | B |
| A | A | A | A | A | A | A | A | A | A |

| | | | | | | | | | | | | | | |
|----|---|----|---|----|---|----|---|----|---|----|---|---|---|---|
| 35 | | 30 | | 25 | | 20 | | 15 | | 10 | | 5 | | 1 |
| C | C | C | C | C | C | C | C | C | C | C | C | C | C | C |
| | | | | | | | | | | | | B | B | B |
| A | A | A | A | A | A | A | A | A | A | A | A | A | A | A |

- NOTES FOR 50000-XX001 OR 50000-XX001LF ONLY:
- ALL POSITIONS ARE LOADED AS SHOWN.
 - COLUMN 1, ROW A IS DESIGNATED AS SIGNAL TERM. 1, AS VIEWED FROM THE MATING FACE.
 - SIGNAL DATA FOR 50000-XX001 OR 50000-XX001LF
SIZE 3 X 55
TOTAL NUMBER OF POSITIONS: 165
TOTAL NUMBER OF POSITIONS LOADED: 107

| ITEM KEY | QTY. | TAIL LENGTH |
|----------|------|--------------------|
| A | 45 | .180±.010/4.57±.25 |
| B | 17 | .180±.010/4.57±.25 |
| C | 45 | .180±.010/4.57±.25 |

| | | | | | | | | |
|-------------|----------------|---------|----------|---------------------------------------|---------------------|--------------------|--|-----|
| mat'l code | NOTE 3 | surface | ISO 1902 | tolerance | ISO 406 ISO 1101 | projection | product family | HPC |
| ltr | ecrn no | dr | date | tolerances unless otherwise specified | | INCH/MM | title | |
| T | | | | angles | linear | 3X ±.01/±.03 | 3 ROW R/A RECEPTACLE SOLDER TAIL, 0 GUIDE PIN | |
| | | | | size | | XXX ±.005/XXX±.013 | scale | 1:1 |
| | | | | dr | D. SHEAFFER | 1/04/90 | dwg no | |
| | | | | engr | S. CLARK | 1/04/90 | sheet 4 of 4 size | |
| | | | | chr | S. CLARK | 1/04/90 | 50000 A3 | |
| | | | | appd | S. CLARK | 1/04/90 | Type | |
| sheet index | revision sheet | | | | | | Product Customer Drawing | |