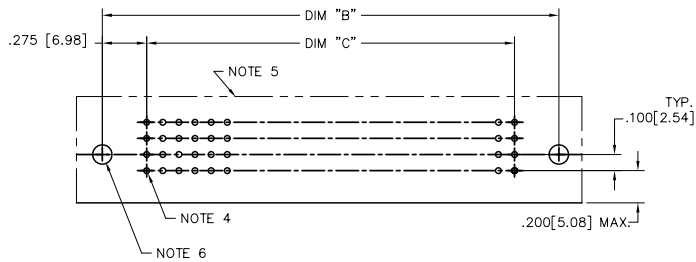
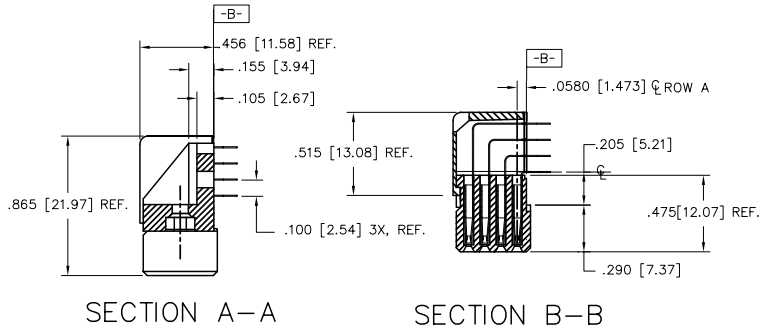


mat'l code	NOTE 3	surface	ISO 1802	tolerance	ISO 406 ISO 1107	projection	product family	HPC
lir	ecm no	dr	date	tolerances unless otherwise specified		INCH/MM	title	4 ROW R/A RECEPTACLE PRESS FIT
P	V10824	JRW	2/6/01	angles	linear	scale 1:1	dwg no	sheet 1 of 7 size
R	V05-0460	DAI	7/13/05	0°±2°	XXXL01/XXXL13		50642	A3
S	V05-1003	DAI	11/1/05		XXXXL0020/XXXXL05		type	Product Customer Drawing
T	V05-1041	HTB	11/14/05	dr	D.INGRAM	7/13/05		
U	M06-0259	MHT	7/06/06	enrg	D.HORCHLER	7/13/05		
V	M06-0388	MHT	10/04/08	chr	T.BREWBAKER	7/13/05		
W	M08-0149	MHT	5/27/08	appd	D.HORCHLER	7/13/05		
sheet index	revision	W	W	W	W	W	W	W
	sheet	1	2	3	4	5	6	7

PRODUCT NUMBER  
SEE TABLE

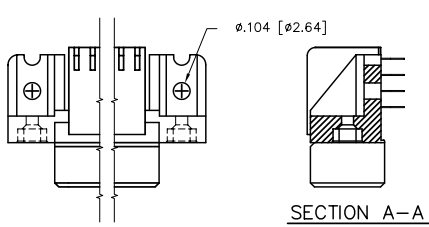


RECOMMENDED PCB LAYOUT  
(ALL HOLES LOCATED ON .100[2.54]  
GRID UNLESS OTHERWISE SHOWN)

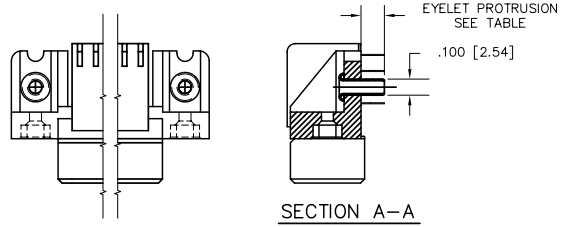
mat'l. code	NOTE 3	surface	ISO 1902	tolerance	ISO 406 ISO 1101	projection	product family	HPC
itr	ecm no	dr	date	tolerances unless otherwise specified		INCH/MM scale 1:1	title	
w				angles	linear		4 ROW R/A RECEPTACLE PRESS FIT	
				0°±2°	XXX.01/XXX.03 XXX.05/XXX.13 XXX4.002/XXX4.05		dwg no	sheet 2 of 7 size
				dr	D.INGRAM 7/13/05		50642	A3
				engr	D.HORCHLER 7/13/05			
				chr	T.BREWBAKER 7/13/05			
				appd	D.HORCHLER 7/13/05		type Product Customer Drawing	
sheet index	revision sheet							

PDM: Rev:W STATUS:Released Printed: Feb 20, 2010

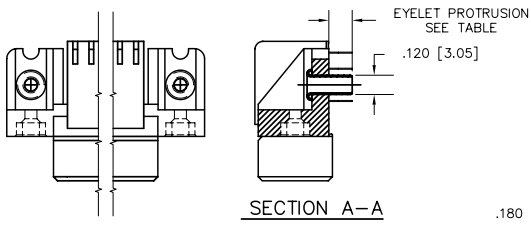
PRODUCT NUMBER  
SEE TABLE



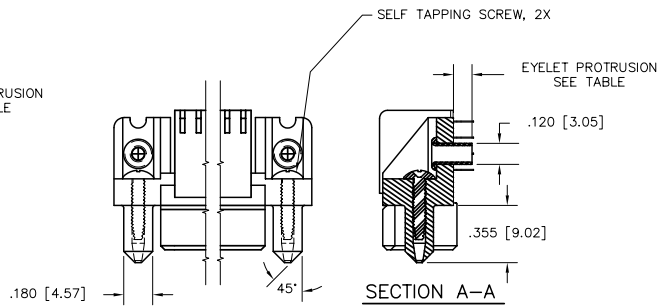
SPECIAL FEATURE OPTION A  
SEE NOTE 6



SPECIAL FEATURE OPTION B  
SEE NOTE 6



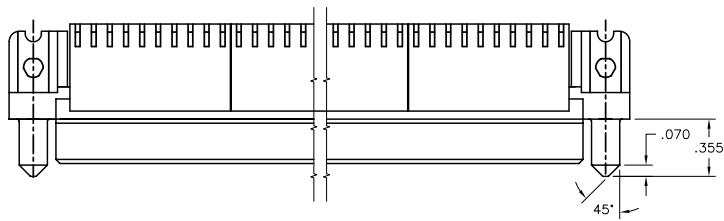
SPECIAL FEATURE OPTION C  
SEE NOTE 6



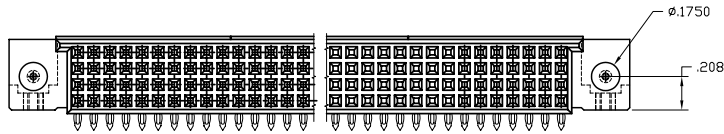
SPECIAL FEATURE OPTION D  
SEE NOTE 6

mat'l. code		surface	tolerance	projection	product family
NOTE 3		ISO 1902	ISO 406		HPC
itr	ecrn no	dr	date		title
w				4 ROW R/A RECEPTACLE PRESS FIT	
		tolerances unless otherwise specified		scale	1:1
		angles	linear		
		0°±2°	XXX±.05/XXX±.13	sheet 3 of 7 size <b>50642</b> A3	
		dr	D.INGRAM 7/13/05	type	
		engr	D.HORCHLER 7/13/05	Product Customer Drawing	
		chr	T.BREWBAKER 7/13/05		
		appd	D.HORCHLER 7/13/05		
sheet	revision				
index	sheet				

PRODUCT NUMBER  
SEE TABLE



SPECIAL FEATURE OPTION E  
SEE NOTE 6



mat'l. code		surface	tolerance	projection	product family									
NOTE 3		ISO 1302	ISO 406		HPC									
			ISO 1101		title									
itr	ecm no	dr	date	tolerances unless otherwise specified	4 ROW R/A RECEPTACLE PRESS FIT									
w				<table border="1"> <tr> <td>angles</td> <td>linear</td> <td>XXX.01/XXX.03</td> </tr> <tr> <td></td> <td></td> <td>XXX±.05/XXX.13</td> </tr> <tr> <td>0°±2°</td> <td></td> <td>XXX±.002/XXX±0.05</td> </tr> </table>	angles	linear	XXX.01/XXX.03			XXX±.05/XXX.13	0°±2°		XXX±.002/XXX±0.05	INCH/MM
angles	linear	XXX.01/XXX.03												
		XXX±.05/XXX.13												
0°±2°		XXX±.002/XXX±0.05												
				scale 1:1	dwg no									
		dr	D.INGRAM	7/13/05	sheet 4 of 7									
		enrg	D.HORCHLER	7/13/05	size									
		chr	T.BREWBAKER	7/13/05	50642									
		appd	D.HORCHLER	7/13/05	A3									
sheet	revision				type									
index	sheet				Product Customer Drawing									

PDM: Rev:W STATUS:Released Printed: Feb 20, 2010



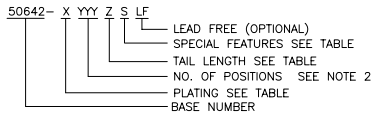
PRODUCT NUMBER	NUMBER OF POSITIONS NOTE 2	TAIL LENGTH	SPECIAL FEATURES SEE NOTE 6	SOLDER TAIL PLATING	CONTACT PLATING	EYELET PROTRUSION	GUIDE PINS
50642-1YYYY	YYY	.125±.010/3.18±.25	-	TIN LEAD	30u"/.76u Au	N/A	NONE
50642-1YYYYELF	YYY	.125±.010/3.18±.25	-	TIN	30u"/.76u GXT	N/A	NONE
50642-1YYYYEA	YYY	.125±.010/3.18±.25	"A"	TIN LEAD	30u"/.76u Au	N/A	NONE
50642-1YYYYALF	YYY	.125±.010/3.18±.25	"A"	TIN	30u"/.76u GXT	N/A	NONE
50642-1YYYYEB	YYY	.125±.010/3.18±.25	"B"	TIN LEAD	30u"/.76u Au	.145/3.68	NONE
50642-1YYYYBLF	YYY	.125±.010/3.18±.25	"B"	TIN	30u"/.76u GXT	.145/3.68	NONE
50642-1YYYYEC	YYY	.125±.010/3.18±.25	"C"	TIN LEAD	30u"/.76u Au	.115/2.92	NONE
50642-1YYYYCLF	YYY	.125±.010/3.18±.25	"C"	TIN	30u"/.76u GXT	.115/2.92	NONE
50642-1YYYYED	YYY	.125±.010/3.18±.25	"D"	TIN LEAD	30u"/.76u Au	.115/2.92	2
50642-1YYYYEDLF	YYY	.125±.010/3.18±.25	"D"	TIN	30u"/.76u GXT	.115/2.92	2
50642-1YYYYEE	YYY	.125±.010/3.18±.25	"E"	TIN LEAD	30u"/.76u Au	N/A	2
50642-1YYYYELF	YYY	.125±.010/3.18±.25	"E"	TIN	30u"/.76u GXT	N/A	2
50642-1YYYYF	YYY	.145±.010/3.68±.25	-	TIN LEAD	30u"/.76u Au	N/A	NONE
50642-1YYYYFLF	YYY	.145±.010/3.68±.25	-	TIN	30u"/.76u GXT	N/A	NONE
50642-1YYYYFA	YYY	.145±.010/3.68±.25	"A"	TIN LEAD	30u"/.76u Au	N/A	NONE
50642-1YYYYFALF	YYY	.145±.010/3.68±.25	"A"	TIN	30u"/.76u GXT	N/A	NONE
50642-1YYYYFC	YYY	.145±.010/3.68±.25	"C"	TIN LEAD	30u"/.76u Au	.145/3.68	NONE
50642-1YYYYCLF	YYY	.145±.010/3.68±.25	"C"	TIN	30u"/.76u GXT	.145/3.68	NONE
50642-1YYYYFD	YYY	.145±.010/3.68±.25	"D"	TIN LEAD	30u"/.76u Au	.145/3.68	2
50642-1YYYYFDLF	YYY	.145±.010/3.68±.25	"D"	TIN	30u"/.76u GXT	.145/3.68	2
50642-1YYYYFE	YYY	.145±.010/3.68±.25	"E"	TIN LEAD	30u"/.76u Au	N/A	2
50642-1YYYYFELF	YYY	.145±.010/3.68±.25	"E"	TIN	30u"/.76u GXT	N/A	2
50642-XX004	240	.125±.010/3.18±.25	SEE SHEET 5	TIN LEAD	30u"/.76u Au	N/A	NONE
50642-XX004LF	240	.125±.010/3.18±.25	SEE SHEET 5	TIN	30u"/.76u GXT	N/A	NONE

mat'l code	NOTE 3	surface	ISO 1902	tolerance	ISO 406	projection	product family
itr	ecm no	dr	date	tolerances unless otherwise specified	ISO 1101		HPC
w				angles	linear	INCH/MM	title
				0°±2°	XXX±.05/XXX±.13	scale 1:1	4 ROW R/A RECEPTACLE PRESS FIT
				dr	D.INGRAM 7/13/05		dwg no 50642 sheet 6 of 7 size A3
				enrg	D.HORCHLER 7/13/05		
				chr	T.BREWBAKER 7/13/05		
				appd	D.HORCHLER 7/13/05		
sheet index	revision sheet						type Product Customer Drawing

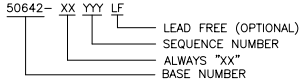
PRODUCT NUMBER  
SEE TABLE

NOTES:

1. PRODUCT NUMBERING CODE



PRODUCT NUMBERING CODE FOR SELECT LOAD



- THIS PRODUCT IS CONFIGURED IN SIZES OF 6 THRU 80 COLUMNS IN INCREMENTS OF ONE, i.e. 6, 7, 8, 9, .....79, 80.
- MATERIAL: PRESS BLOCK - HIGH TEMP THERMOPLASTIC; HOUSING--GLASS AND MINERAL FILLED HIGH TEMPERATURE THERMOPLASTIC, FLAME RETARDANT PER UL94V-0. COLOR--BLACK CONTACT--BeCu
- DRILLED HOLE DIA OF .0453±.001 INCH FINISHED TO .0400±.0030 INCH BY PLATING SnPb OR OTHER PLATING 0.0003 TO 0.0006 INCHES THICK WITH A COPPER UNDERPLATE AS NEEDED.
- INFORMATION DOCUMENT: FOR PCB STAY- AWAY ZONE, SEE TA-0954.
- SPECIAL FEATURES (SEE PRODUCT NUMBER TABLE, AND DETAILS ON SHEET 3)
  - IF NO SPECIAL FEATURE CODE IS SELECTED, PCB MOUNTING HOLE DIMENSION TO BE  $\phi.120\pm.003[3.05\pm0.07]$
  - "A" PCB MOUNTING HOLE DIMENSION TO BE  $\phi.100\pm.003[2.54\pm0.07]$
  - "B" INCLUDES PRE-INSTALLED EYELETS FOR PCB ATTACHMENT IN A  $\phi.100\pm.003[2.54\pm0.07]$  MOUNTING HOLE. (E TAIL ONLY)
  - "C" INCLUDES PRE-INSTALLED EYELETS FOR PCB ATTACHMENT IN A  $\phi.120\pm.003[3.05\pm0.07]$  MOUNTING HOLE.
  - "D" INCLUDES PRE-INSTALLED EYELETS WITH MOLDED GUIDE PINS FOR PCB ATTACHMENT IN A  $\phi.120\pm.003[3.05\pm0.07]$  MOUNTING HOLE.
  - "E" INCLUDES MOLDED GUIDE PINS WITH TRI-HOLE SHAPED MOUNTING HOLES. (EYELETS NOT INSTALLED)
- LENGTH CALCULATIONS:  
 DIMENSION "A" CALCULATION =  $.100 [2.54] \times \text{NO. OF COLUMNS} + .75 [19.1]$   
 DIMENSION "B" CALCULATION =  $.100 [2.54] \times \text{NO. OF COLUMNS} + .450 [11.43]$   
 DIMENSION "C" CALCULATION =  $.100 [2.54] \times \text{NO. OF COLUMNS} - .100 [2.54]$
- MANUFACTURE'S LOGO, PN, AND LOT CODE TO APPEAR ON THIS SURFACE.
- THIS PRODUCT (WITH "LF" SUFFIX) MEETS EUROPEAN UNION DIRECTIVES AND OTHER COUNTRY REGULATIONS AS DESCRIBED IN GS-22-008.
- THIS HOUSING WILL WITHSTAND EXPOSURE TO 260°C PEAK TEMPERATURE FOR 10-30 SECONDS IN A CONVECTION, INFRA-RED OR VAPOR PHASE REFLOW OVEN.
- ALL POSITIONS ARE LOADED EXCEPT FOR -XXXXY ASSEMBLIES WHICH HAVE SELECTIVE LOADING.

mat'l code		surface	tolerance	projection	product family
NOTE 3		ISO 1902	ISO 406 ISO 1101		HPC
itr	ecr no	dr	date	title	
				4 ROW R/A RECEPTACLE PRESS FIT	
w				angles	linear
				0°±2°	XXX±.05/XXX±.13 XXXX±.002/XXXX±.05
				dr	D.INGRAM 7/13/05
				engr	D.HORCHLER 7/13/05
				chr	T.BREWBAKER 7/13/05
				appd	D.HORCHLER 7/13/05
sheet	revision				
index	sheet				
				scale	1:1
				INCH/MM	
				FCI	
				dwg no	50642
				sheet	7 of 7
				size	A3
				type	Product Customer Drawing