

SYM. ZONE		ECON. ERN NO.		DATE	APPRD.
B	PROPOSAL			DEC05/05	L.GHAN
D	TAPE AND REEL DETAILS ADDED			SEP12/08	A.GREEN

AMPHENOL PART NUMBER: UE27-AMX4-10H-TR

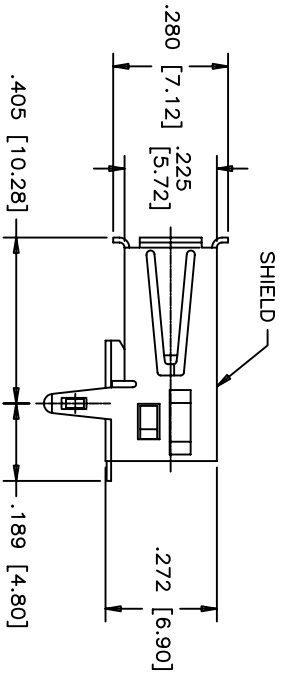
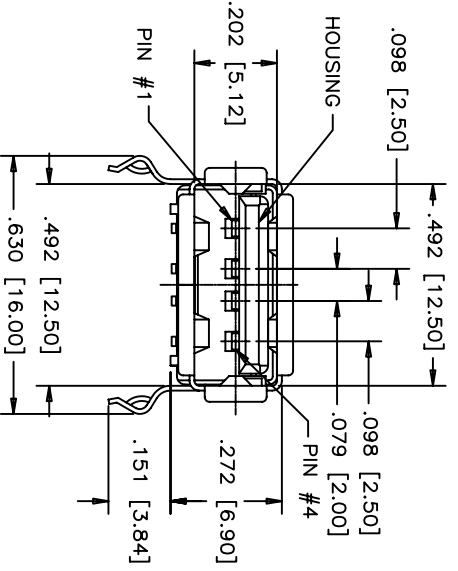
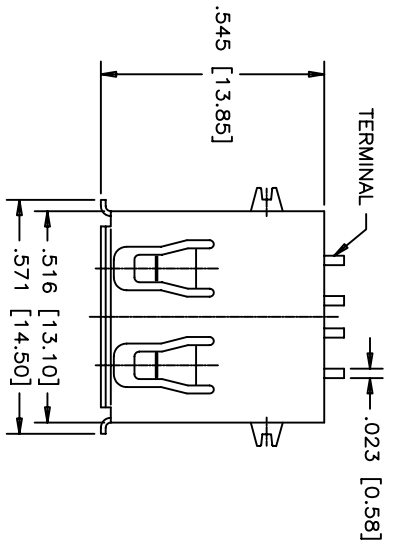
SERIES = RECEPTACLE, ROHS COMPLIANT  
 UE27 = RECEPTACLE, ROHS COMPLIANT  
 TYPE = SERIES A  
 A = SERIES A  
 STYLE  
 M = RIGHT ANGLE SMT

CONTACT SHIELD PLATING  
 5 = 0.76 MICRONS [30 MICRO] MIN. GOLD OVER 1.27 MICRONS [50 MICRO] MIN. NICKEL ON CONTACT MATING AREA.  
 2.34 MICRONS [100 MICRO] TIN PLATING ON CONTACT TAILS.  
 7 = GOLD FLASH OVER 1.27 MICRONS [50 MICRO] MINIMUM NICKEL ON CONTACT TAILS.  
 2.54 MICRONS [100 MICRO] TIN PLATING ON CONTACT TAILS.

NUMBER OF CONTACTS  
 4 = 4 CONTACTS

PACKAGING MODIFIER  
 NO DIGITS = STANDARD TRAY PACKAGING  
 TR = TAPE & REEL PACKAGING

MODIFIER  
 H = HIGH TEMPERATURE HOUSING  
 SHIELDING STYLE  
 0 = STANDARD  
 COLOUR  
 1=BLACK



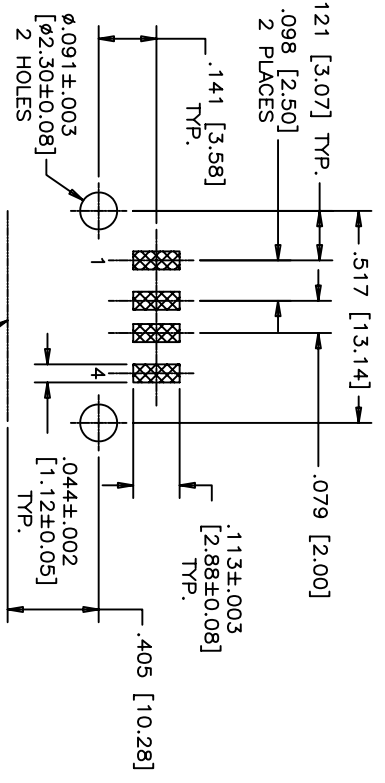
NOTES:

HOUSING: HIGH TEMPERATURE THERMOPLASTIC, FLAMMABILITY UL94V-0, COLOUR: BLACK

CONTACTS: COPPER ALLOY, CONTACT PLATING AS FOLLOW: SEE AMPHENOL PART NUMBER SYSTEM FOR PLATING OPTIONS.

SHELL: COPPER ALLOY, PLATING: NICKEL OVER COPPER UNDERPLATE.

PACKAGING: STANDARD TRAY, 120 PARTS PER TRAY, 50 TRAYS PER CARTON; UE27-AMX4-10H-TR PARTS ARE PACKAGED IN TAPE & REEL FORMAT, STANDARD QUANTITY IS 250 PARTS PER REEL AND 10 REELS PER CARTON SEE SHEET 2 FOR TAPE AND REEL PACKAGING DETAILS.



RECOMMENDED PC BOARD LAYOUT (COMPONENT SIDE OF BOARD)

FRONT EDGE OF CONNECTOR

MATERIAL	DATE
DRAWN Chigow	DEC05/05
DESIGNED	
CHECKED PAULW	DEC05/05
I. E. APPRD.	
O. A. APPRD.	
DWG. APPRD.	
ENG. REL. NO.	
REF. EAR #12884	
DIMENSIONS ARE IN CODE ID. NO.	
INCHES [mm]	03554

Amphenol Canada Corp.

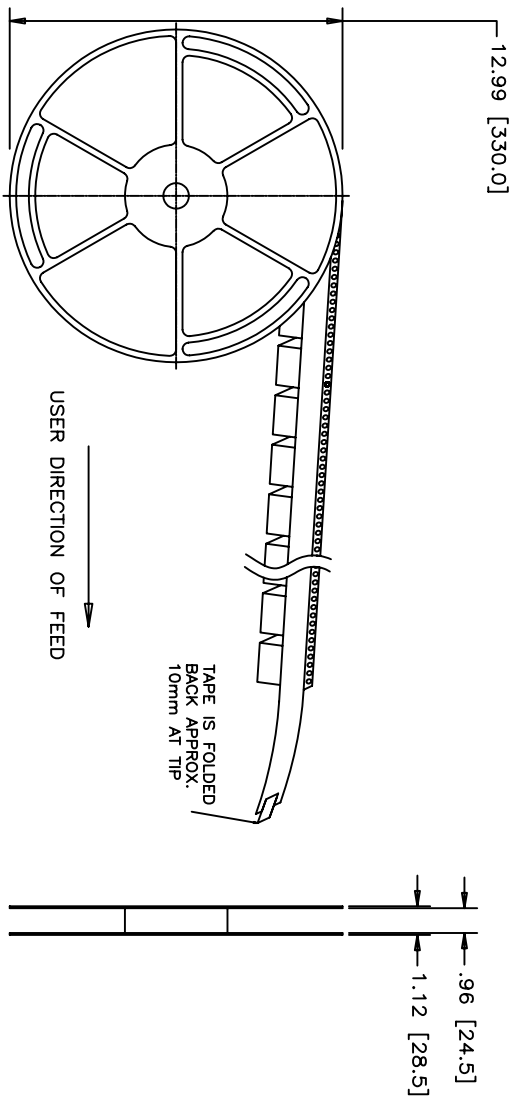
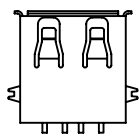
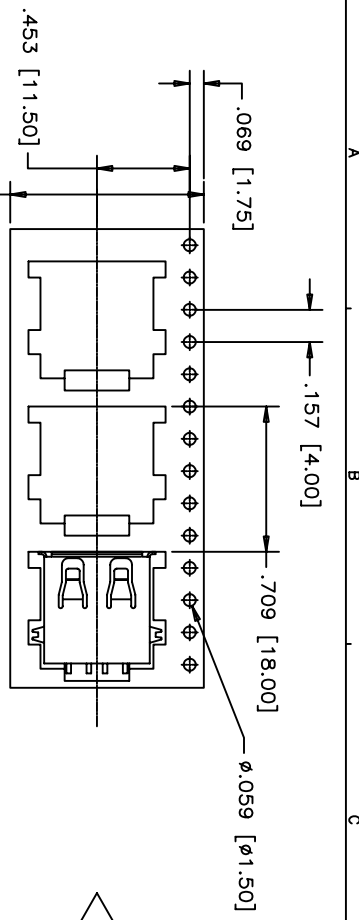
TITLE  
 UNIVERSAL SERIAL BUS, RECEPTACLE, SERIES A STANDARD, RIGHT ANGLE, SMT TYPE-ROHS COMPLIANT

DWG DRAWING NO. P-UE27-AMX4-10H

REV.	SCALE	WT.	SURF.	SHEET	1 OF 2
D	4/1				

THIS DOCUMENT CONTAINS PROPRIETARY INFORMATION AND SUCH INFORMATION MAY NOT BE DISCLOSED TO OTHERS FOR ANY PURPOSE OR USED FOR MANUFACTURING PURPOSES WITHOUT WRITTEN PERMISSION FROM AMPHENOL CANADA CORP.

REVISIONS			
SYM ZONE	EQN, ERN NO.	DATE	APPRD.
B	PROPOSAL	DEC05/05	L.CHAN
D	TAPE AND REEL DETAILS ADDED	SEP15/08	A.GREEN



**NOTES:**

- DETAILS SHOWN ARE FOR TAPE AND REEL PACKAGED OPTION.
- TAPE START HAS 30 EMPTY POCKETS. TAPE TAIL HAS 15 EMPTY POCKETS.
- PET LEADER TAPE WRAPS 2X AROUND REEL.
- SHEET 2 DIMENSION TOLERANCES ARE ±0.012in [±0.30mm]

MATERIAL		DRAWN <i>Chigow</i>		DATE	
-----		DESIGNED		DEC05/05	
-----		CHECKED <i>PAULW</i>		DEC05/05	
-----		I. E. APPRD.			
-----		O. A. APPRD.			
-----		DWG. APPRD.			
-----		ENG. REL. NO.			
-----		REF. <i>EAR #12884</i>			
-----		DIMENSIONS ARE IN		NO.	
-----		INCHES [mm]		03554	
TITLE		SCALE		REV.	
<b>Amphenol Canada Corp.</b>		4/1		D	
UNIVERSAL SERIAL BUS, RECEPTACLE, SERIES A STANDARD, RIGHT ANGLE, SMT TYPE-ROHS COMPLIANT		WT. -----		P-UE27-AMX4-10H	
DWG DRAWING NO.		SURF. -----		SHEET 2 OF 2	

THIS DOCUMENT CONTAINS PROPRIETARY INFORMATION AND SUCH INFORMATION MAY NOT BE DISCLOSED TO OTHERS FOR ANY PURPOSE OR USED FOR MANUFACTURING PURPOSES WITHOUT WRITTEN PERMISSION FROM AMPHENOL CANADA CORP.