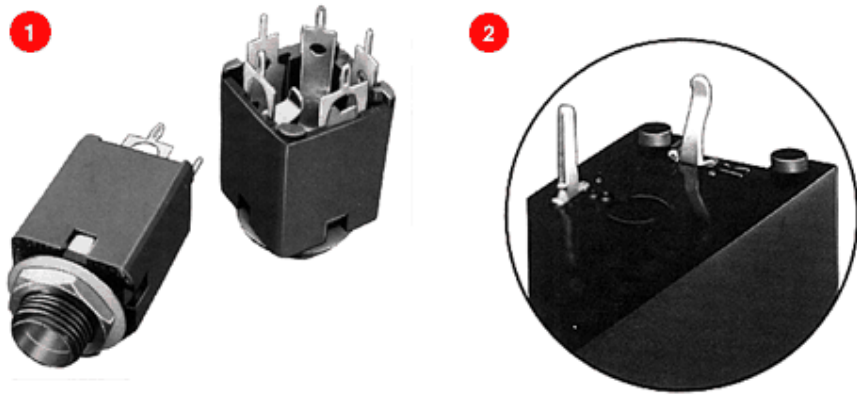


Switchcraft®

[Previous Page](#) | [Return to Index](#) | [Next Page](#)



SPRING LOCK PC TERMINALS FOR Hi-D Jax®

1. Hi-D Jax® SHOWING SPRING LOCK PC TERMINALS
2. CLOSE-UP VIEW OF SPRING LOCK TERMINALS

Hi-D Jax® enclosed 1/4 inch phone jacks offer spring lock PC terminals which close during insertion into PC board. Upon completed insertion, the terminals reopen to securely hold the jack to the PC board during soldering. Solder "fills" the terminals which provides an additional security from loosening. The spring lock terminal is available on all Hi_D Jax[®] which currently offer PC terminals.

NOTE: Tip and ground terminals can be specified with spring lock terminals (also ring terminal on 3-conductor jacks).

MOUNTING

Jacks mount in a single .375 inch diameter hole on .625 inch minimum centers. Series 11*, N11* and S11* mount in panels up to .156 inch thick. Series NL11* (long bushing) mount in panels up to .250 inch thick. Jacks with PC terminals mount on PC boards up to .094 inch thick. Spring lock PC terminals hold jack securely to PC board. Threaded bushing permits mechanical connection to equipment panel. Mounting hardware is supplied. See "RECOMMENDED PC BOARD LAYOUT" for further details.

SERIES 11* - 2- and 3-conductor types, threaded metal

bushing .276 inch long. .250 inch inside diameter

bushings.

SERIES N11* - Same as Series 11* except bushing is molded thermoplastic for insulated mounting.

SERIES NL-11* - Same as Series N11* except bushing is .375 inch long for insulated mounting in panels up to .250 inch thick.

SERIES S11* - Same as Series 11* except bushing has .210 inch inside diameter Smaller diameter protects against accidental insertion of plugs with .250 inch diameter fingers.

| Commercial Hi-D JaX® Part Numbering System | | | | |
|---|---|------------------|------------------|--|
| Mating Plug Option | Bushing Option Series | Series | Circuitry | Suffix Options |
| Accepts 1/4" Commercial Plug | Blank - 1/4" Commercial Jack | 11 - Hi - D JaX® | 1 - I | Blank - Solder lugs |
| | L - .375" Long Bushing | | 2A - III | PC - PC Terminals |
| | N - Insulated Bushing | 2B - IV | | PCS - Snap Lock PC Terminals |
| | NL - Insulated Bushing and .375" Long Bushing | 3 - V | | M-Reshaped Springs accept wide variety of 1/4" plug designs. |
| | NS - Insulated Bushing and Accepts .206" Diameter Plugs | 3B - VII | | |
| | S - Accepts .206" Diameter Plugs | 3D - VI | | |
| | | 3E - IX | | |
| | | 3F - XXVIII | | |
| | | 4B - XII | | |
| See page 88 for military Hi-D JaX® part numbering system. | | | | |

SPECIFICATIONS

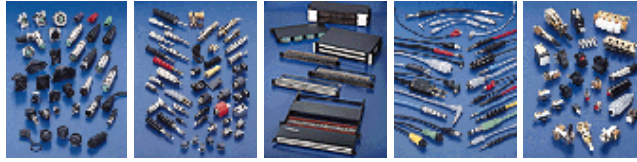
MATERIAL

Mounting Bushing: Series 11*, S11*: Nickel-plated copper alloy. Series N11*, NL11*: Molded thermoplastic over plated copper alloy sleeve.

| Ordering Information | | | |
|--|--------------------------|-----------------------|--|
| TWO CONDUCTOR PART NUMBERS | | | |
| Part Number | Description | Jack Schematic | Typical Mating Plug¹ |
| 111PCS | Open circuit | I | 250 |
| N111PCS | Insulated bushing | I | 250 |
| 112APCS | Single closed circuit | III | 250 |
| N112APCS | Insulated bushing | III | 250 |
| 113PCS | Isolated "make" circuit | V | 250 |
| 113EPCS | Isolated "break" circuit | IX | 250 |
| THREE CONDUCTOR PART NUMBERS | | | |
| 112BPCS | Double open circuit | IV | 267 |
| N112BPCS | Insulated bushing | IV | 267 |
| S112BPCS | .210 inch I.D. bushing | IV | S267 |
| 113BPCS | Single closed circuit | VII | 267 |
| N113BPCS | Insulated bushing | VII | 267 |
| 113FPCS | Ring closed circuit | XXVIII | 267 |
| 114BPCS | Double closed circuit | XII | 267 |
| N114BPCS | Insulated bushing | XII | 267 |
| NL114BPCS | .375 inch long bushing | XII | 267 |
| 1 See Jack Section for other mating plugs. Special order only. Contact Switchcraft. | | | |

[Previous Page](#) | [Return to Index](#) | [Next Page](#)

To search a category please click on the corresponding icon:



| [Connectors](#) | [Jacks and Plugs](#) |
| [Patch Panels, Patch Kits & Jackfields](#) | [Cable Assemblies and Patch Cords](#) | [Switches](#) |

All products shown are covered by Switchcraft's limited lifetime warranty.

| [Switchcraft home](#) |
[About Us](#) | [Products](#) | [What's New](#) | [Search](#) | [Contact Us](#)