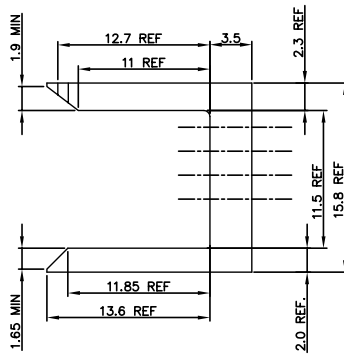
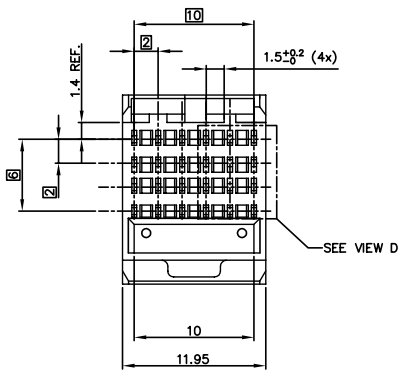


Copyright FCI



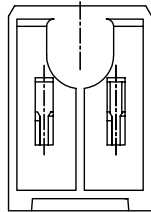
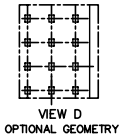
FCIconnect.com

PART NUMBER	NO. OF MOD.
10026155-005	1
10026155-005LF	



NOTES:

- BODY MATERIAL: LIQUID CRYSTAL POLYMER 30% GLASS. FLAME RETARDANT ACC. TO UL 94-V0. COLOR: NATURAL
- FOR LEAD FREE NUMBERS, ADD AN 'LF' SUFFIX. PART NUMBERS THAT DO NOT END IN 'LF' ARE LEAD FREE. EXAMPLE: 10026155-005LF
- THE PRODUCTS WHERE THE PART NUMBER ENDS IN LF AND THE NONE LF PART NUMBERS MEET THE EUROPEAN UNION DIRECTIVES AND OTHER COUNTRY REGULATIONS AS DESCRIBED IN GS-22-008.
- ALL PRODUCTS WILL WITHSTAND EXPOSURE TO 260°C FOR 60 SECONDS IN A CONVECTION, INFRA-RED OR VAPOUR PHASE REFLOW OVEN.



mat'l. code	SEE NOTE 1	surface	ASME Y14.5	tolerance	ASME Y14.5	projection	product family	METRAL (tm)
ltr	ecn no	dr	date	tolerances	unless otherwise specified	MM	title	4 ROW SHROUD
A	V03-0339	LP	03/21/03	angles	.X±.3	MM	dwg no	10026155
B	V03-0439	LP	4/22/03	flat	.XX±.13	scale 1:1	sheet 1 of 2	A4
C	V06-0080	JRV	3/15/06	σ±2°	.XXX±.051	FCI	type	CUSTOMER Drawing
D	V06-0609	DCH	2006-06-22	dr	L.POTTEIGER	03/21/03		
				engr	M.GRAY	03/21/03		
				chr	M.GRAY	03/21/03		
				appd	M.GRAY	03/21/03		
sheet	revision	D	D					
index	sheet	1	2					

form: A4mmXLC

PDM: Rev:D

STATUS Released

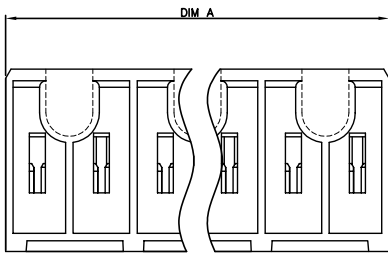
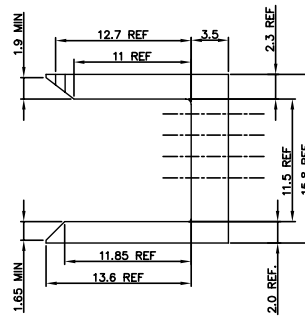
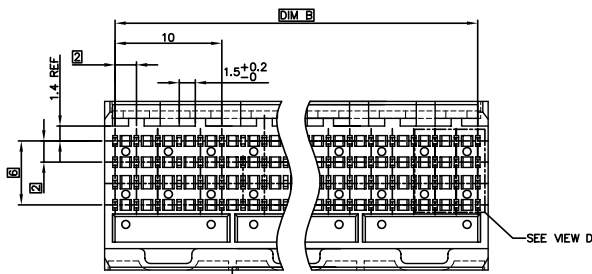
Printed: Jul 28, 2010

Copyright FCI



FCIconnect.com

PART NUMBER	DIM A	DIM B	NO. OF MOD.
10026155-001	35.95	34.00	3
10026155-002	23.95	22.00	2
10026155-003	47.95	46.00	4
10026155-004	95.95	94.00	8
10026155-001LF	35.95	34.00	3
10026155-002LF	23.95	22.00	2
10026155-003LF	47.95	46.00	4
10026155-004LF	95.95	94.00	8



mat'l. code	SEE NOTE 1	surface	ASME Y14.5	tolerance	ASME Y14.5	projection	product family	METRAL (tm)
ltr	ecn no	dr	date	tolerances	unless otherwise specified	title	4 ROW SHROUD	
d				angles	.X±.3	MM	dwg no	sheet 2 of
				σ±2°	.XXX±.051	scale 1:1	10026155	A4
		dr	L.POTTEIGER	03/21/03			type	CUSTOMER Drawing
		enr	M.GRAY	03/21/03				
		chr	M.GRAY	03/21/03				
		app	M.GRAY	03/21/03				
sheet	revision							
index	sheet							

form: A4mmXLC

PDM: Rev:D

STATUS Released

Printed: Jul 28, 2010