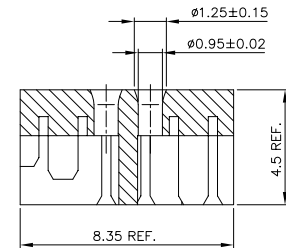
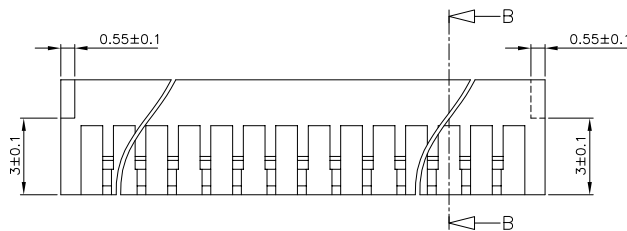
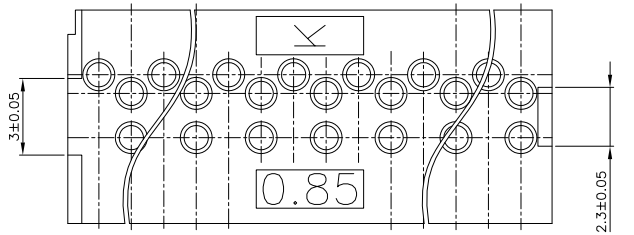


Product number	No. of Pos.	DIM	W
85382-001	3 x 7	18.94	
85382-011	3 x 3	8.78	

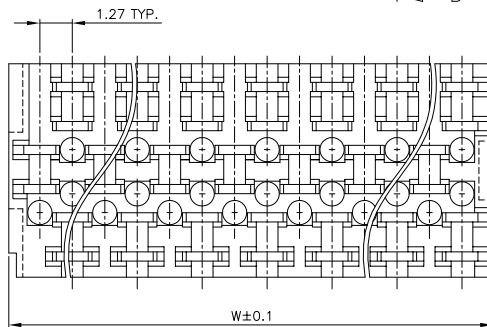
NOTES:-

1. THIS PRODUCT MEETS EUROPEAN UNION DIRECTIVES AND OTHER COUNTRY REGULATIONS AS DESCRIBED IN GS-22-008.
2. LEADFREE OR RoHS DIRECTIVE LABELLING TO BE PROVIDED AS PER GS-14-920.
3. " LF " SUFFIX TO PRODUCT NUMBER FOR RoHS COMPATIBLE/ LEADFREE VERSION.
4. PARTS WITH AND WITHOUT " LF " SUFFIX ARE FORM-FIT AND FUNCTIONALLY IDENTICAL. " LF " SUFFIX PROVIDED FOR PART NUMBER STANDARDISATION OF PART THAT MEETS RoHS REQUIREMENTS.



Section B-B

MATERIAL: THERMOPLASTIC POLYESTER
 GREY, 30% GLASS FILLED
 FLAME RETARDANT UL-94-V0



mat'l. code		surface		tolerance		projection		product family	
SEE NOTE		ISO 1302	ISO 406	ISO 1101	ISO 406		BACKPANEL		
ltr	ecn no.	dr	date	tolerances unless otherwise specified		mm		title	
A	H50590	DOB	1995-10-12	angles	linear	mm		PIERCE BLOCK	
B	I05-0123	MINI	2005-07-27			scale -		CABLE DIA 0.85 mm	
C	I05-0248	MINI	2005-11-22					dwg no	
D	I06-0083	MINI	2006-06-01	dr	D.de BIL	1995-10-12	sheet 1 of 1		
				engr	M.LOMAN	1995-10-12	size		
				chr	RAKHEE GEORGE	2005-11-22	A3		
				appd	RAKHEE GEORGE	2005-11-22	type		
								Product Customer Drawing	
sheet index	revision sheet	D	1						