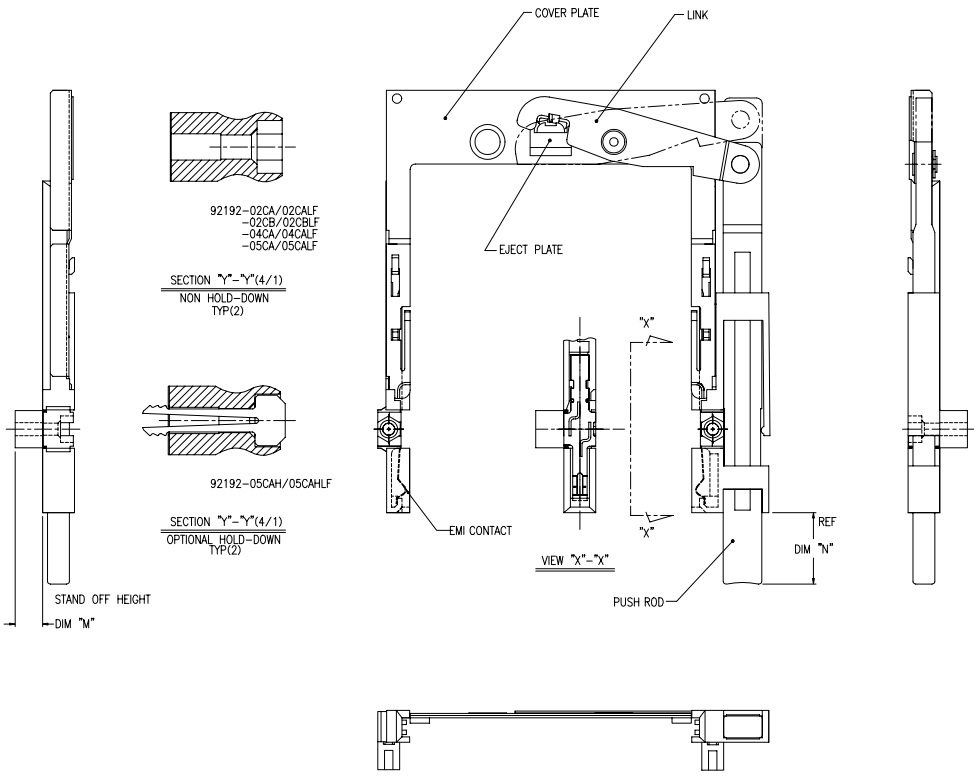






PRODUCT NO.	
92192-02CA/02CALF	⚠
92192-02CB/02CBLF	⚠
92192-04CA/04CALF	⚠
92192-05CA/05CALF	⚠
92192-05CAH/05CAHLF	⚠ ⚠

REVISIONS				
REV	DESCRIPTION	ECN	BY	DATE
A	RELEASED	J30053	N.T	2/17/93
B	REVISED	J40163	M.K	5/26/94
C	REVISED	V40840	M.K	7/ 5/94
D	REVISED	J40198	M.K	7/19/94
E	REVISED	V32113	M.K	12/20/94
F	REVISED	J40349	M.K	1/9/95
G	REVISED (ADDED -05CAH)	J70134	K.S	8/8/97
H	REVISED (ADDED LF)	905-0260	MZ	11/09/05
N				



NOTE

- EJECT PLATE MOVE ALONG INSIDE WALL OF COVER PLATE SMOOTHLY AFTER ASSEMBLING WITH HDR ASSY.

② MATERIAL

- GUIDE : POLYPHTHARAMID UL94V-0 BLACK
- PUSH ROD : FLAME RETARDANT UL94V-0 BLACK
- PLATE : STAINLESS
- EMI CONTACT : PHOSPHOR BRONZE
- STAND OFF : ZINC ALLOYS DIE CASTING

③ FINISH

- EMI CONTACT UNDER PLATING : 2.0µm MIN. Ni
- CONTACT AREA : 0.5µm MIN. Au
- STAND OFF : 3~5µm Ni OVER 5~10µm Cu.

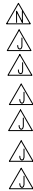
SHEET INDEX	ISSUE SH. NO.	TOLERANCES UNLESS OTHERWISE SPECIFIED	MAT SEE NOTE ②	DR <i>J. Ono</i>	DATE 8/8/97	CUSTOMER COPY	TITLE
				ENGR <i>H. Seguchi</i>			68P EJECTOR HEADER TYPE 1 / 1 / 1
LINEAR			FINISH SEE NOTE ③	CHK		THIRD ANGLE PROJ	MECHANISM ASSY
ANGLES			APPD		UNIT MM INCHES	SCALE 2/1	SIZE C DWG. NO. 92192 REV. SHEET N 3 of



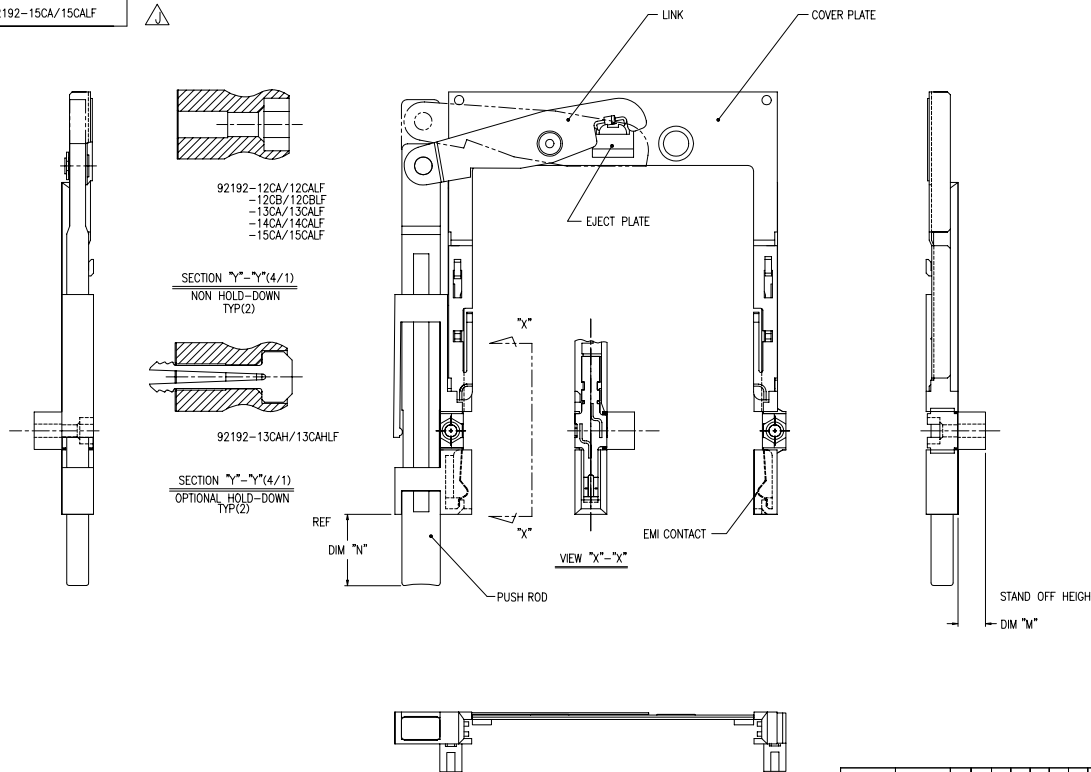
PDM: Rev:N STATUS Released Printed: Oct 12, 2010



PRODUCT NO.
92192-12CAH/12CAHLF
92192-12CB/12CBLF
92192-12FA/12FALF
92192-13CA/13CALF
92192-13CAH/12CAHLF
92192-14CA/14CALF
92192-15CA/15CALF



REVISIONS				
REV	DESCRIPTION	ECN	BY	DATE
A	RELEASED	J33263	N.T	2/17/93
B	REVISED	J40163	M.K	5/26/94
C	REVISED	V46840	M.K	7/ 5/94
D	REVISED	J40198	M.K	7/19/94
E	REVISED	V32113	M.K	12/20/94
F	REVISED	J40349	M.K	1/9/95
G	REVISED (ADDED -13CA -13CAH)	J70134	K.S	8/8/97
H	REVISED (ADDED -12FA)	N90076	M.K	7/22/99
J	REVISED (ADDED "LF")	N05-0360	MZ	11/09/05
N				



NOTE  
 1. EJECT PLATE MOVE ALONG INSIDE WALL OF COVER PLATE  
 SMOOTHLY AFTER ASSEMBLING WITH HDR ASSY.

② MATERIAL  
 GUIDE : POLYPHTHARAMID UL94V-0 BLACK  
 PUSH ROD : FLAME RETARDANT UL94V-0 BLACK  
 PLATE : STAINLESS  
 EMI CONTACT : PHOSPHOR BRONZE  
 STAND OFF : ZINC ALLOYS DIE CASTING

③ FINISH  
 EMI CONTACT  
 UNDER PLATING : 2.0µm MIN. Ni  
 CONTACT AREA : 0.5µm MIN. Au  
 STAND OFF : 3~5µm Ni OVER 5~10µm Cu.

DF-003A REV.0  
 DO NOT SCALE PRINT THIS INFORMATION IS CONFIDENTIAL AND IS OBSOLETE TO YOU ON CONDITION THAT NO FURTHER DISCLOSURE IS MADE BY YOU TO OTHER THAN FCI PERSONNEL WITHOUT WRITTEN AUTHORIZATION FROM FCI JAPAN K.K.

SHEET INDEX	ISSUE SH NO.	TOLERANCES UNLESS OTHERWISE SPECIFIED	MAT	DATE	CUSTOMER COPY	TITLE
		SEE NOTE ① 3/16 ①/411	DR. <i>M. Nagano</i> CHK. <i>M. Nagano</i>	7/22/99		68P EJECTOR HEADER TYPE I / II / III MECHANISM ASSY
LINEAR		SEE NOTE ② 3/16 ②/411	APPD		UNIT	SCALE   SIZE   DWG. NO.   REV   SHEET
ANGLES		SEE NOTE ③ 3/16 ③/411				2/1   C   92192   N   5 of

