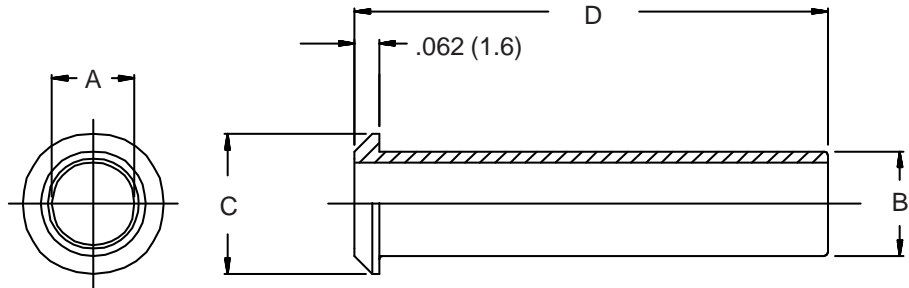
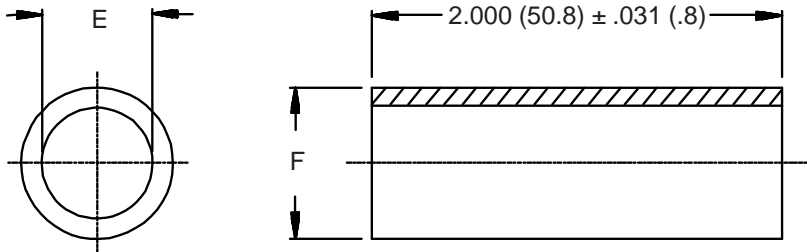


## MS3420 Telescoping Bushing

**MS3420-3**  
Basic Part No. \_\_\_\_\_  
Dash No. \_\_\_\_\_  
Material is Rubber per  
MIL-STD-417



**MS3420-3 L**  
Basic Part No. \_\_\_\_\_  
Dash No. \_\_\_\_\_  
Material \_\_\_\_\_  
A = Rubber per MIL-STD-417  
D = Silicone Rubber  
L = Fluorosilicone Rubber



### TABLE I

Dash No.	A Dia	B Dia	C Dia	D Dim	E Dia	F Dia
3	.130 (3.3)	.210 (5.3)	.379 (9.6)	2.875 (73.0)	.125 (3.2)	.210 (5.3)
4	.220 (5.6)	.302 (7.7)	.505 (12.8)	2.750 (69.9)	.219 (5.6)	.302 (7.7)
6	.312 (7.9)	.427 (10.8)	.619 (15.7)	2.625 (66.7)	.312 (7.9)	.427 (10.8)
8	.437 (11.1)	.552 (14.0)	.744 (18.9)	2.500 (63.5)	.438 (11.1)	.531 (13.5)
10	.562 (14.3)	.615 (15.6)	.889 (22.6)	2.375 (60.3)	.438 (11.1)	.615 (15.6)
12	.625 (15.9)	.740 (18.8)	1.084 (27.5)	2.250 (57.2)	.541 (13.7)	.740 (18.8)
16	.750 (19.1)	.927 (23.5)	1.314 (33.4)	2.125 (54.0)	.750 (19.1)	.927 (23.5)
18	n/a	n/a	n/a	n/a	.938 (23.8)	1.115 (28.3)
20	.937 (23.8)	1.240 (31.5)	1.598 (40.6)	2.000 (50.8)	.938 (23.8)	1.240 (31.5)
24	1.250 (31.8)	1.365 (34.7)	1.847 (46.9)	1.875 (47.6)	1.125 (28.6)	1.365 (34.7)
28	1.375 (34.9)	1.614 (41.0)	2.085 (53.0)	1.750 (44.5)	1.250 (31.8)	1.614 (41.0)
32	1.624 (41.2)	1.864 (47.3)	2.335 (59.3)	1.625 (41.3)	1.625 (41.3)	1.865 (47.4)
40	1.874 (47.6)	2.364 (60.0)	2.835 (72.0)	1.500 (38.1)	1.875 (47.6)	2.365 (60.1)

1. For complete dimensions see applicable Military Specification.
2. Metric dimensions (mm) are indicated in parentheses.