

Hydraulic Crimp Tooling

New 10,000 psi-rated Tools with Industry-standard U-Dies, Also Available with Portable, Powered Pumps



Fast Facts

- Standard 10,000 psi [68,950 kPa] rated hydraulic pumps and heads
- Interchangeable AMP-design U-dies for crimp force up to 14 tons [125 kN]
- U-die stroke options of 1 in [25 mm] and 1.5 in [38 mm]
- Termination range varies by product type
- Integrated head/die for crimping #8-2 AWG [7-34 mm²] SOLISTRAND terminals
- Heads compatible with shank-dies available for larger wires requiring crimp force greater than 14 tons [125 kN]
- Portable power, using a hand-held tool with rechargeable battery, or a Portable Battery Hydraulic Unit for standard crimping system
- Electric & manual hydraulic pumps for crimping at fixed locations
- Produced under a Quality Management System certified to ISO 9001. A copy of the certificate is available upon request.

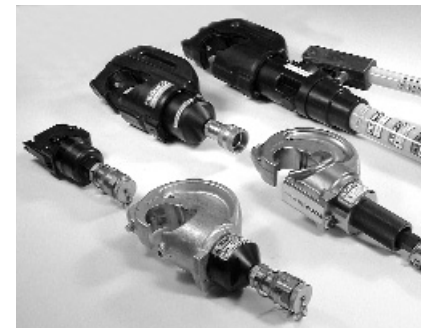
Tyco Electronics continues the quality tradition of AMP crimping tools with a new line of industry-standard 10,000 psi [68,950 kPa] hydraulic compression crimp heads, pumps, and interchangeable U-dies. A new battery-powered pump and tool options provide unprecedented portability for any crimping application.

The U-dies, made with the AMP-design precision and performance you've come to expect, are well suited for applications requiring a crimp force of up to 14 tons [125 kN]. For wire sizes requiring more than 14 tons [125 kN], Tyco Electronics offers five heavy-duty AMP crimp head configurations that are compatible with shank dies.

There are four light-duty crimp head options, including three in the U-die format. U-dies are available in two types, with 1 in [25 mm] and 1.5 in [38 mm] stroke, respectively. The two 12 ton [101 kN] head options have 1 in [25 mm] stroke. The 14 ton [125 kN] head is for larger products that call for a 1.5 in [38 mm] stroke. Also available is an integrated head/die for crimping #8 to #2 SOLISTRAND terminals. The heavy-duty heads are available in five different configurations.

Note: These heads are not compatible with 8,200 psi [56,540 kPa] tooling.

The basic 10,000 psi hydraulic tool system requires a pump, hose (multiple lengths are available with all configurations), crimp head, and crimp die. There is a Tyco Electronics hydraulic pump to meet the demands of any crimping application. For maximum portability, the hand-held crimping tool with rechargeable battery is an effective solution. Or, to power a standard crimping system at any location, order the Portable Battery Hydraulic Unit. For fixed crimping locations, you can choose between a 110V or 220V Electric Hydraulic Pump (with optional remote hand control), or manual foot and hand hydraulic pumps.



U-Die Line up, including #8-#2 SOLISTRAND head, for 10,000 psi [68,950 kPa] systems providing up to 14 tons [125 kN] of crimp force



Shank-Die Line up, for wiring sizes requiring more than 14 tons [125 kN] of crimp force

tyco
Electronics

AMP

Selecting a Hydraulic System?

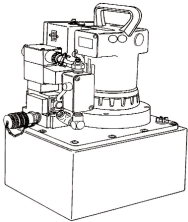
Have you remembered a...

- Pump
- Hose
- Hand or Foot control
- Crimp Head
- Crimp Die

- Powered systems require a pump, hand or foot control, hose, crimp head and die except with 1673672-1 (see below).
- The portable battery pump, 180411-1 (see back page), includes a hand control.
- Manual systems require hand tools (see below) and the battery hand tool (see back page) requires only dies.
- Refer to colored matrix throughout the catalog for die, head and hand tool options.

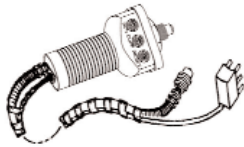
HYDRAULIC TOOLING SELECTION GUIDE

Hydraulic Pumps, Controls and Hoses



Heavy Duty Electric Hydraulic Pump (110V)^{1,2} P/N 1804700-1
OR
Heavy Duty Electric Hydraulic Pump (220V)^{1,2} P/N 1804700-2

WITH



Remote Hand Control³
(for Heavy-Duty pump)
w/hose attached

P/N 1901775-1 (7 ft hose)
P/N 1901776-1 (15 ft hose)
P/N 1901777-1 (21 ft hose)

OR



Remote Foot Control³
(for Heavy-Duty pump)

P/N 68284-1

AND

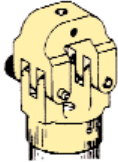


Hydraulic Hoses⁴
(not required for hand control)
P/N 1583662-1 (6 ft)
P/N 1583662-2 (10 ft)
P/N 1583662-3 (20 ft)

Heavy-Duty Crimp Heads (Shank Dies) (> 25,000 cycles)



250 MCM - 600 MCM
33 ton output force
28 lbs
P/N 1752788-1



8 - 4/0 A
22 ton output force
16 lbs
P/N 1752877-1



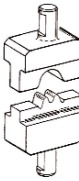
4/0 AWG - 1000 MCM
26 ton output force
29 lbs
P/N 1752786-1



8 - 4/0 AWG
33 ton output force
28 lbs
P/N 1752787-1

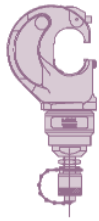


12-10 AWG - 350 MCM
18 ton output force
13 lbs
P/N 1752868-1

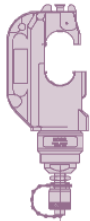


AMPLI-BOND	8 AWG - 4/0 AWG
AMPOWER	6 AWG - 1500 MCM
AMPOWER Quick Disconnect	1/0 AWG - 600 MCM
Insulation Piercing COPALUM	10 AWG (Cu) - 3/0 AWG
Sealed COPALUM	10 AWG - 3/0 AWG
Bar COPALUM	10 AWG (Cu) - 400 MCM
SOLISTRAND	8 AWG - 600 MCM
STRATOTHERM	8 AWG - 2/0 AWG
TERMINYL	1/0 AWG thru 4/0 AWG

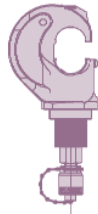
Medium-Duty Crimp Heads & Hand Tools (U-Dies)



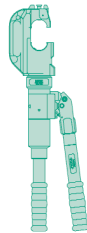
12 ton output force
1" stroke
Compression Head²
U-Die Compatible
P/N 1901820-1



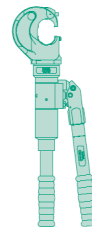
12 ton output force
1.5" stroke
Compression Head
U-Die Compatible
P/N 1901821-1



12 ton output force
1" stroke Titanium
Compression Head
U-Die Compatible
P/N 1490747-1



1.5" stroke Hand
Compression Tool
U-Die Compatible
P/N 1490749-1



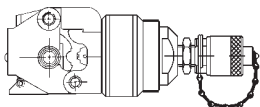
1" stroke Hand
Compression Tool
U-Die Compatible
P/N 1490748-1



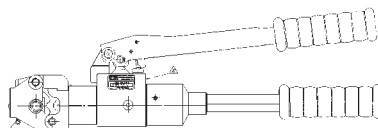
AMPLI-BOND	8 AWG - 2 AWG
AMPOWER	6 AWG - 4/0 AWG
SOLISTRAND	8 AWG - 4/0 AWG
TERMINYL	8 AWG - 1/0 AWG

Not sure what's right for you? Call our Tooling Assistance Center specialists at 1-800-722-1111.

SOLISTRAND (Integrated Crimp Dies)



#8-#2 AWG SOLISTRAND
Compression Head
(No crimp dies required)
P/N 1673672-1



#8-#2 AWG SOLISTRAND
Compression Tool
(No crimp dies required)
P/N 59975-1

- ¹ Portable Battery Pump 180411-1, Foot Pump 1583659-1 OR Hand Pump 1583661-1 can be substituted as manual options for Electro-Hydraulic Pumps (see back page).
- ² Includes male screw-to-connect, 3/8" NPT quick couplers
- ³ Not required with manual pump options.
- ⁴ Includes female screw-to-connect, 3/8" NPT quick couplers

Dies, Hand Tools, and Hydraulic Heads—Configuration Options

The Tyco Electronics hydraulic crimping tool line offers a wide array of die, hand tool, and hydraulic head configurations. Use the following tables to determine the configuration that best matches your requirements.

The tables are color-coded to help you identify the new 10,000 psi [68,950 kPa] rated configurations that correspond to previous 8,200 psi [56,540 kPa] tooling.

TERMINYL™ Terminals and Splices

Wire Size in AWG [mm ²]	Hydraulic Crimp Tooling 10,000 psi Operating Pressure				DYNA-CRIMP System 8,200 psi Operating Pressure					
	Hand Tools (U-Die)	Hydraulic Heads (U-Die)	Hydraulic Heads (Shank Die)	Hydraulic Heads (Shank Die)	Hand Tool	Hydraulic Heads (Shank Die)	Hydraulic Heads (Shank Die)	Hydraulic Heads (Shank Die)		
	1490748-1	1490749-1	1901820-1, 1490747-1	1901821-1	1752877-1	1752787-1	59974-1 §	69051 §	69066	58422-1
8 [7-8.5]	1490597-1	1490597-1	1490597-1	1490597-1			47820 §	47820 §		
6 [13-15]	1490598-1	1490598-1	1490598-1	1490598-1			47821 §	47821 §		
4 [21]	1490599-1	1490599-1	1490599-1	1490599-1			47822 §	47822 §		
4HD					69463	69463			69463	69463
2 [34-35]		1490406-1		1490406-1			47823 §	47823 §		
1/0 [50-60]		1490700-1		1490700-1	47824	47824			47824	47824
2/0 [67-70]					47825	47825			47825	47825
3/0 [80-95]					47915	47915			47915	47915
4/0 [100-125]					47918	47918			47918	47918

AMPLI-BOND™ and PLASTI-GRIP™ Terminals and Splices

Wire Size in AWG [mm ²]	Hydraulic Crimp Tooling 10,000 psi Operating Pressure				DYNA-CRIMP System 8,200 psi Operating Pressure			
	Hand Tool (U-Die)	Hydraulic Head (U-Die)	Hydraulic Heads (Shank Die)	Hydraulic Heads (Shank Die)	Hand Tool	Hydraulic Heads (Shank Die)	Hydraulic Heads (Shank Die)	Hydraulic Heads (Shank Die)
	1490749-1	1901821-1	1752877-1	1752787-1	59974-1 §	69051 §	69066	58422-1
8 [7-8.5]	1490534-1	1490534-1	48858-1	48858-1	48752-1 §	48752-1 §	48858-1	48858-1
6 [13-15]	1490535-1	1490535-1	48859-1	48859-1	48753-1 §	48753-1 §	48859-1	48859-1
4 [21]	1490536-1	1490536-1	48860-1	48860-1	48754-1 §	48754-1 §	48860-1	48860-1
2 [34-35]	1490410-1	1490410-1	48861-1	48861-1	48755-1 §	48755-1 §	48861-1	48861-1
1/0 [50-60]			48756-1	48756-1			48756-1	48756-1
2/0 [67-70]			48757-1	48757-1			48757-1	48757-1
3/0 [80-95]			48758-1	48758-1			48758-1	48758-1
4/0 [100-125]			48759-1	48759-1			48759-1	48759-1

AMPLI-BOND™ and PLASTI-GRIP™ Large Expansion Terminals

Wire Size in AWG [mm ²]	Hydraulic Crimp Tooling 10,000 psi Operating Pressure		DYNA-CRIMP System 8,200 psi Operating Pressure	
	Hydraulic Heads (Shank Die)	Hydraulic Heads (Shank Die)	Hydraulic Heads (Shank Die)	Hydraulic Heads (Shank Die)
	1752877-1	1752787-1	69066	58422-1
8 [7-8.5]	47236-1	47236-1	47236-1	47236-1
6 [13-15]	47237-1	47237-1	47237-1	47237-1
4 [21]	47238-1	47238-1	47238-1	47238-1
2 [34-35]	47239-1	47239-1	47239-1	47239-1
1/0 [50-60]	47378-1	47378-1	47378-1	47378-1

§	These products will be discontinued
---	-------------------------------------

SOLISTRAND™ Terminals

Hydraulic Crimp Tooling 10,000 psi Operating Pressure							DYNA-CRIMP System 8,200 psi Operating Pressure							
Wire Size in AWG [mm²]	Hand Tool (Dies Included)	Hand Tools (U-Die)	Hydraulic Heads (U-Die)	Hydraulic Heads (Shank Die)			Hand Tool	Hydraulic Heads	Hydraulic Heads (Shank Die)					
	59975-1 †	1490748-1, 1490749-1	1901820-1, 1901821-1, 1490747-1	1673672-1 †	1752868-1	1752788-1	1752786-1	59973-1 §	69065 §, 69067 §	69097 §	69069 † §	69099	58445-1	69082
8 [7-8.5]	+	1490413-1 * 1490414-1 **	1490413-1 * 1490414-1 **	+	69216			48126 * § 48355 ** §	48126 * § 48355 ** §	46146 * § 46145 ** §	+	69216		
6 [13-15]	+	1490413-2 * 1490414-2 **	1490413-2 * 1490414-2 **	+	69217			48128 * § 48127 ** §	48128 * § 48127 ** §	46134 * § 46133 ** §	+	69217		
4 [21]	+	1490413-3 * 1490414-2 **	1490413-3 * 1490414-2 **	+	69218			48129 * § 48127 ** §	48129 * § 48127 ** §	46135 * § 46133 ** §	+	69218		
2 [34-35]	+	1490413-4 * 1490414-2 **	1490413-4 * 1490414-2 **	+	45433			48130 * § 48127 ** §	48130 * § 48127 ** §	46136 * § 46133 ** §	+	45433		
1/0 [50-60]		1490413-5 * 1490414-3 **	1490413-5 * 1490414-3 **		45436			48132 * § 48131 ** §	48132 * § 48131 ** §	46138 * § 46137 ** §		45436		
2/0 [67-70]		1490413-6 * 1490414-3 **	1490413-6 * 1490414-3 **		45439			48133 * § 48131 ** §	48133 * § 48131 ** §			45439		
3/0 [80-95]		1490413-7 * 1490414-3 **	1490413-7 * 1490414-3 **		45442			48134 * § 48131 ** §	48134 * § 48131 ** §			45442		
4/0 [100-125]		1490413-8 * 1490414-3 **	1490413-8 * 1490414-3 **		45445			300430 * § 48131 ** §	300430 * § 48131 ** §			45445		
250-300 MCM [127-152]						48816	69911						48816	69911
300-350 MCM [152-177]						48817	69912						48817	69912
400 MCM [203]						48818	69913						48818	69913
500-600 MCM [253-304]						48819	69914						48819	69914

Heavy Duty SOLISTRAND™ Terminals

Wire Size in AWG [mm²]	Hydraulic Crimp Tooling 10,000 psi Operating Pressure		DYNA-CRIMP System 8,200 psi Operating Pressure	
	Hand Tools (U-Die)	Hydraulic Heads (U-Die)	Hand Tool	Hydraulic Heads (Shank Die)
	1490748-1, 1490749-1	1901820-1, 1901821-1, 1490747-1	59973-1 §	69065 §, 69067 §
8 [7-8.5]	1490413-9 * 1490414-2 **	1490413-9 * 1490414-2 **	48128-1 * § 48127-1 ** §	48128-1 * § 48127-1 ** §
6 [13-15]	1-1490413-0 * 1490414-2 **	1-1490413-0 * 1490414-2 **	48129-1 * § 48127-1 ** §	48129-1 * § 48127-1 ** §
4 [21]	1-1490413-1 * 1490414-2 **	1-1490413-1 * 1490414-2 **	48130-1 * § 48127-1 ** §	48130-1 * § 48127-1 ** §
2 [34-35]	1-1490413-2 * 1490414-3 **	1-1490413-2 * 1490414-3 **	48132-1 * § 48131-1 ** §	48132-1 * § 48131-1 ** §
1/0 [50-60]	1-1490413-3 * 1490414-3 **	1-1490413-3 * 1490414-3 **	48133-1 * § 48131-1 ** §	48133-1 * § 48131-1 ** §

*	Stationary Die
**	Moving Die
†	Self-Contained Die
◇	Use Adapter 69760
×	Use Adapter 69834
§	These products will be discontinued

SOLISTRAND™ Flag Terminals

Wire Size in AWG [mm²]	Hydraulic Crimp Tooling 10,000 psi Operating Pressure			DYNA-CRIMP System 8,200 psi Operating Pressure	
	Hand Tool (U-Die)	Hydraulic Head (U-Die)	Hydraulic Head (Shank Die)	Hydraulic Heads (Shank Die)	
	1490749-1	1901821-1	1752868-1	69067 §	69099
8 [7-8.5]	1752680-8 * 1752681-2 **	1752680-8 * 1752681-2 **	48506-1 * ◇ 48505-1 ** ×	48506 * § 48505 ** §	48506-1 * ◇ 48505-1 ** ×
6 [13-15]	1752680-7 * 1752681-3 **	1752680-7 * 1752681-3 **	48508-1 * ◇ 48507-1 ** ×	48508 * § 48507 ** §	48508-1 * ◇ 48507-1 ** ×
4 [21]	1752680-6 * 1752681-3 **	1752680-6 * 1752681-3 **	48509-1 * ◇ 48507-1 ** ×	48509 * § 48507 ** §	48509-1 * ◇ 48507-1 ** ×
2 [34-35]	1752680-5 * 1752681-3 **	1752680-5 * 1752681-3 **	48510-1 * ◇ 48507-1 ** ×	48510 * § 48507 ** §	48510-1 * ◇ 48507-1 ** ×
1/0 [50-60]	1752680-4 * 1752681-1 **	1752680-4 * 1752681-1 **	48652-1 * ◇ 48511-1 ** ×	48652 * § 48511 ** §	48652-1 * ◇ 48511-1 ** ×
2/0 [67-70]	1752680-3 * 1752681-1 **	1752680-3 * 1752681-1 **	48805-1 * ◇ 48511-1 ** ×	48805 * § 48511 ** §	48805-1 * ◇ 48511-1 ** ×
3/0 [80-95]	1752680-2 * 1752681-1 **	1752680-2 * 1752681-1 **	48806-1 * ◇ 48511-1 ** ×	48806 * § 48511 ** §	48806-1 * ◇ 48511-1 ** ×
4/0 [100-125]	1752680-1 * 1752681-1 **	1752680-1 * 1752681-1 **	48807-1 * ◇ 48511-1 ** ×	48807 * § 48511 ** §	48807-1 * ◇ 48511-1 ** ×

tyco
Electronics

AMP

Dies, Hand Tools, and Hydraulic Heads—Configuration Options



AMPOWER™ Quick Disconnect Terminals

Wire Size in AWG [mm ²]	Hydraulic Crimp Tooling 10,000 psi Operating Pressure		DYNA-CRIMP System 8,200 psi Operating Pressure	
	Hydraulic Heads (Shank Die)		Hydraulic Heads (Shank Die)	
	1752868-1	1752786-1	69099	69082
1/0 [50-60]	68361-1 ○ / 68200-1		68361-1 ○ / 68200-1	
2/0 [67-70]	68253-1 ○ / 68201-1		68253-1 ○ / 68201-1	
3/0 [80-95]	59867-1 ○		59867-1 ○	
4/0 [100-125]	68304-1 ○		68304-1 ○	
250 MCM [127]	68203-1		68203-1	
350 MCM [177]		68204-1		68204-1
400 MCM [203]		68332-1 ●		68332-1 ●
500 MCM [253]		68206-1 ●		68206-1 ●
600 MCM [304]		46757-3		46757-3

○	With locator
●	Dual Crimp

Insulation Piercing Crimp COPALUM™ Terminals and Splices

Wire Size in AWG [mm ²]		Hydraulic Crimp Tooling 10,000 psi Operating Pressure			DYNA-CRIMP System 8,200 psi Operating Pressure		
		Hand Tool (U-Die)	Hydraulic Head (U-Die)	Hydraulic Heads (Shank Die)		Hydraulic Heads (Shank Die)	
Al	Cu	1490749-1	1901821-1	1752868-1	1752786-1	69099	69082
8 [7-8.5]	10 [5-6]	1490714-1	1490714-1	68084		68084	
6 [13-15]	8 [7-8.5]	1490715-1	1490715-1	68085		68085	
4 [21]	6 [13-15]	1490716-1	1490716-1	68086		68086	
2 [34-35]	4 [21]	1490717-1	1490717-1	68130		68130	
1/0 [50-60]	2 [34-35]	1490718-1	1490718-1	68131		68131	
2/0 [67-70]	1/0 [50-60]			68132		68132	
3/0 [80-95]	2/0 [67-70]			68133		68133	
4/0 [100-125]	3/0 [80-95]			318106-1	68129	318106-1	68129

	Release Pending
--	-----------------

Dies, Hand Tools, and Hydraulic Heads—Configuration Options



AMPOWER™ Terminals and Splices

Wire Size in AWG [mm ²]	Hydraulic Crimp Tooling 10,000 psi Operating Pressure						DYNA-CRIMP System 8,200 psi Operating Pressure						
	Hand Tools (U-Die)		Hydraulic Heads (U-Die)		Hydraulic Heads (Shank Die)		Hand Tool	Hydraulic Heads (Shank Die)					
	I490748-1	I490749-1	I901820-1, I490747-1	I901821-1	I752868-1	I752788-1	I752786-1	59973-1 §	69065 §, 69067 §	68073-2	69099	58445-1	69082
6 [13-15]	I583092-1	I583092-1	I583092-1	I583092-1	69133-1						69133-1		
4 [21]	I583093-1	I583093-1	I583093-1	I583093-1	69134-2						69134-2		
2 [34-35]	I583094-1	I583094-1	I583094-1	I583094-1	46765-3			46321-3 §	46321-3 §		46765-3		
1/0 [50-60]	I583095-1	I583095-1	I583095-1	I583095-1	46766-2			46322-2 §	46322-2 §		46766-2		
2/0 [67-70]	I583096-1	I583096-1	I583096-1	I583096-1	46767-2			46323-2 §	46323-2 §		46767-2		
3/0 [80-95]					46749-2			46324-2 §	46324-2 §		46749-2		
4/0 [100-125]					46750-2			46325-2 §	46325-2 §		46750-2		
250 MCM [127]					46751-2	46326-2					46751-2	46326-2	
300 MCM [152]					46752-2						46752-2		
350 MCM [177]					46753-2		69653				46753-2		69653
400 MCM [203]							46754-2						46754-2
500 MCM [253]							46755-2						46755-2
600 MCM [304]							46756-2						46756-2
600 HD							59870-1						59870-1
700 MCM [355]							46757-2						46757-2
800 MCM [405]							46758-2						46758-2
900 MCM [456]							46759-2						46759-2
1000 MCM [507]							46760-2						46760-2
1250 MCM [634]										68114-1			
1500 MCM [761]										68282-1			

§	These products will be discontinued
---	-------------------------------------

Dies, Hand Tools, and Hydraulic Heads—Configuration Options



Sealed Crimp COPALUM™ Terminals and Splices

Wire Size in AWG [mm ²]		Hydraulic Crimp Tooling 10,000 psi Operating Pressure				DYNA-CRIMP System 8,200 psi Operating Pressure	
		Hand Tool (U-Die)	Hydraulic Head (U-Die)	Hydraulic Heads (Shank Die)		Hydraulic Heads (Shank Die)	
Al	Cu	1490749-1	1901821-1	1752877-1	1752787-1	69066	58422-1
8 [7-8.5]	10 [5-6]	1490555-1	1490555-1	68006	68006	68006	68006
6 [13-15]	8 [7-8.5]	1490556-1	1490556-1	68007	68007	68007	68007
4 [21]	6 [13-15]	1490557-1	1490557-1	68008	68008	68008	68008
2 [34-35]	4 [21]			68009	68009	68009	68009
1/0 [50-60]	2 [34-35]			68010-1	68010-1	68010-1	68010-1
2/0 [67-70]	1/0 [50-60]			314964-1	68011-1	314964-1	68011-1
3/0 [80-95]	2/0 [67-70]				59877-1		59877-1
4/0 [100-125]	3/0 [80-95]				314948-1		314948-1

Bar Crimp COPALUM™ Terminals and Splices

Wire Size in AWG [mm ²]		Hydraulic Crimp Tooling 10,000 psi Operating Pressure				DYNA-CRIMP System 8,200 psi Operating Pressure	
		Hand Tool (U-Die)	Hydraulic Head (U-Die)	Hydraulic Heads (Shank Die)		Hydraulic Heads (Shank Die)	
Al	Cu	1490749-1	1901821-1	1752868-1	1752786-1	69099	69082
8 [7-8.5]	10 [5-6]	1490572-1	1490572-1	68043		68043	
6 [13-15]	8 [7-8.5]	1490573-1	1490573-1	68044		68044	
4 [21]	6 [13-15]	1490574-1	1490574-1	68045		68045	
2 [34-35]	4 [21]	1490575-1	1490575-1	68046		68046	
1/0 [50-60]	2 [34-35]			68047		68047	
2/0 [67-70]	1/0 [50-60]			68048		68048	
3/0 [80-95]	2/0 [67-70]			68049		68049	
4/0 [100-125]	3/0 [80-95]				68050		68050
250 MCM [127]	4/0 [100-125]				68034		68034
300 MCM [152]	250 MCM [127]				68035		68035
400 MCM [203]	300 MCM [152]				68036		68036
500 MCM [253]	400 MCM [203]				68037		68037

STRATO-THERM™ Terminals and Splices

	Hydraulic Crimp Tooling 10,000 psi Operating Pressure	DYNA-CRIMP System 8,200 psi Operating Pressure
	Hydraulic Head (Shank Die)	Hydraulic Head (Shank Die)
Wire Size AWG [mm ²]	1752868-1	69099
8 [7-8.5]	69211-1	69211-1
6 [13-15]	69212-1	69212-1
4 [21]	69213-1	69213-1
2 [34-35]	69214-1	69214-1
1/0 [50-60]	69215-1	69215-1
2/0 [67-70]	69254-1	69254-1

Heavy-Duty Seamless Terminals (UL Approved)

(Straight Ring Tongue Terminals Only)

	Hand Tools U-Die	Hydraulic Heads U-Die
Wire Size	1490748-4 1490749-1	1901820-1 1901821-1 1490747-1
8	1-1490413-4 * 1901657-1 **	1-1490413-4 * 1901657-1 **
6	1-1490413-5 * 1901657-2 **	1-1490413-5 * 1901657-2 **
4	1-1490413-6 * 1901657-2 **	1-1490413-6 * 1901657-2 **
2	1-1490413-7 * 1901657-2 **	1-1490413-7 * 1901657-2 **
1/0*	1-1490413-8 * 901657-3 **	1-1490413-8 * 901657-3 **
2/0*	1-1490413-9 * 1901657-3 **	1-1490413-9 * 1901657-3 **
3/0*	2-1490413-0 * 1901657-3 **	2-1490413-0 * 1901657-3 **
4/0*	2-1490413-1 * 1901657-3 **	2-1490413-1 * 1901657-3 **

*	Stationary Die
**	Moving Die

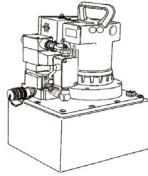
Pumps for Fixed Locations

For fixed crimping locations, choose for fixed crimping between a 110 or 220 V Electric Hydraulic Pump (with optional remote hand control), or manual foot and hand hydraulic pumps.

Heavy-Duty Electric Hydraulic Pump

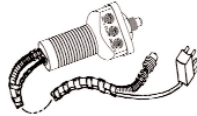
P/N 1804700-1 (110 V)
or 1804700-2 (220 V)

- 2 1/2 gallon reservoir
- 1 1/2 HP Motor
- 56 cu. in. flow rate
- 65 lbs



Remote Hand Control (for Electric Hydraulic Pump)

1901775-1 (7 ft hose)
1901776-1 (15 ft hose)
1901777-1 (21 ft hose)



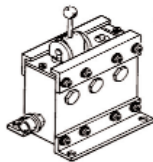
Remote Foot Control (for Electric Hydraulic Pump)

P/N 68284-1



3-Way Multidirectional Valve

P/N 1901782-1 (Manual)
P/N 1901783-1 (Electric)



Manual Pumps

Foot Hydraulic Pump

P/N 1583659-1



Hand Hydraulic Pump

P/N 1583661-1



- Not for steel or ACSR cable

Portability Options

Portable tools and pump units allow you to perform crimping where it's needed—in the factory or in the field.

Portable Battery Hydraulic Unit



Kit includes hand control,
hose not included.
See page 2.

1804111-1	Portable Battery Unit (10,000-psi [68,950 kPa])
1804112-1	Nickel-Metal Hydride Battery Pack
1804113-1	Nickel-Cadmium Battery Pack
1804114-1	Battery Charger 110V
1804117-1	Control Switch Sub-assembly

Hydraulic Crimping Tool with Rechargeable Battery

P/N 1213875-1	Crimping Tool Kit
P/N 1213872-1	Battery
P/N 1213873-1	Battery Charger



Self contained power unit.
Crimp dies not included.

Compatible with same dies as 12 ton
[101 kN] 1 in [25 mm] Compression Head,
P/N 1901820-1



Need More Information?

For information about tooling, call 1-800-522-6752
or e-mail toolsales@tycoelectronics.com.

For drawings or technical data, contact your Tyco Electronics sales engineer or call the Technical Support Center: 1-800-522-6752. Dimensions are in millimeters unless specified otherwise. Values in brackets are English equivalents unless specified otherwise. Specifications subject to change. Consult Tyco Electronics for latest specifications.