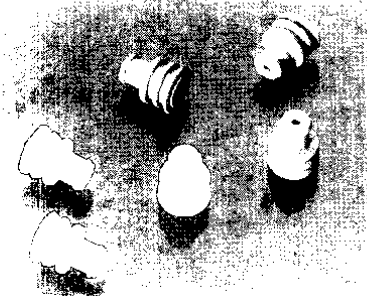


## Superseal 1.5 Series . . . Wire To Wire Connectors . . . 6 mm Centers (Continued)

### Wire Seals and Cavity Plugs



Wire seals and cavity plugs are manufactured from silicon rubber. One wire seal is required per contact.

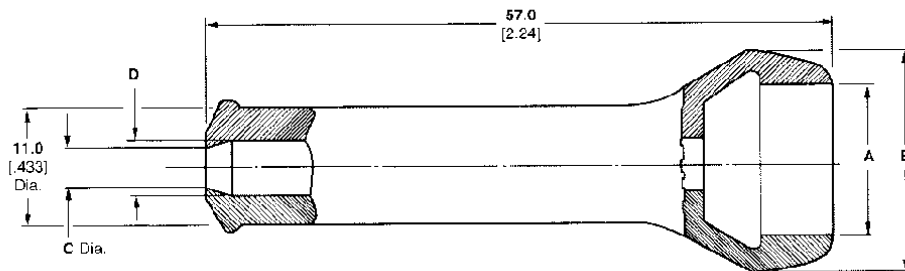
Description	Part Number	Wire Insulation Diameter mm/inches.			Seal Color
		Contact Part No.	Contact Part No.	Contact Part No.	
		282403-1	282110-1	282466-1	
		282404-1	282109-1	282465-1	
		Wire Size 0.35-0.5 mm <sup>2</sup> [22-20 AWG]	Wire Size .75-1.5 mm <sup>2</sup> [20-16 AWG]	Wire Size 1.5-2.5 mm <sup>2</sup> [16-14 AWG]	
Wire Seal	281934-2	—	1.8-2.4 [.071-.094]	1.8-2.4 [.071-.094]	Yellow
	281934-3	—	2.6-3.3 [.102-.130]	2.6-3.3 [.102-.130]	Red
	281934-4	1.4-1.7 [.055-.067]	—	—	Green
Cavity Plug	282081-1	—	—	—	Red

### Rubber Boots



Connector Housing Part No.	Description	Positions	Rubber Boot	Color
282080-1	Plug housing	2	880810-1	
282104-1	Cap Housing			
282087-1	Plug housing	3	880811-2	Black
282105-1	Cap Housing			
282089-1	Plug housing	5	880814-1	
282107-1	Cap housing			

### Rubber Boots . . . Dimensional Data



Boot Part Number	Number of Wires	Dimension "A"		Dimension "B"		Dimension "C"		Dimension "D"	
		mm	in.	mm	in.	mm	in.	mm	in.
880810-1	2	12.5	[.492]	20.5	[.807]	4.6	[0.18]	5.0	[0.20]
880811-2	3	17.5	[.689]	25.5	[1.004]	4.6	[0.18]	5.0	[0.20]
880814-1	5	27.5	[1.083]	35.0	[1.378]	6.5	[0.26]	7.0	[0.28]