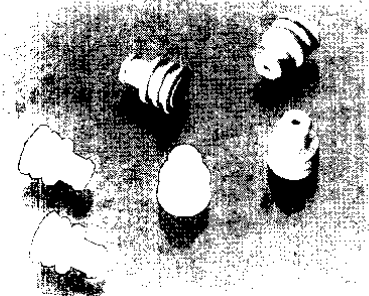


Superseal 1.5 Series . . . Wire To Wire Connectors . . . 6 mm Centers (Continued)

Wire Seals and Cavity Plugs



Wire seals and cavity plugs are manufactured from silicon rubber. One wire seal is required per contact.

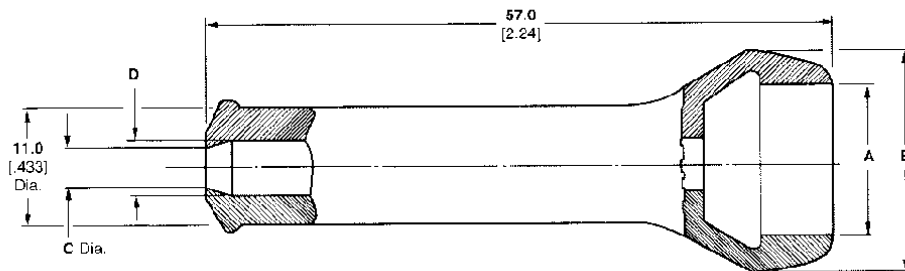
Description	Part Number	Wire Insulation Diameter mm/inches.			Seal Color
		Contact Part No.	Contact Part No.	Contact Part No.	
		282403-1	282110-1	282466-1	
		282404-1	282109-1	282465-1	
		Wire Size 0.35-0.5 mm ² [22-20 AWG]	Wire Size .75-1.5 mm ² [20-16 AWG]	Wire Size 1.5-2.5 mm ² [16-14 AWG]	
Wire Seal	281934-2	—	1.8-2.4 [.071-.094]	1.8-2.4 [.071-.094]	Yellow
	281934-3	—	2.6-3.3 [.102-.130]	2.6-3.3 [.102-.130]	Red
	281934-4	1.4-1.7 [.055-.067]	—	—	Green
Cavity Plug	282081-1	—	—	—	Red

Rubber Boots



Connector Housing Part No.	Description	Positions	Rubber Boot	Color
282080-1	Plug housing	2	880810-1	
282104-1	Cap Housing			
282087-1	Plug housing	3	880811-2	Black
282105-1	Cap Housing			
282089-1	Plug housing	5	880814-1	
282107-1	Cap housing			

Rubber Boots . . . Dimensional Data



Boot Part Number	Number of Wires	Dimension "A"		Dimension "B"		Dimension "C"		Dimension "D"	
		mm	in.	mm	in.	mm	in.	mm	in.
880810-1	2	12.5	[.492]	20.5	[.807]	4.6	[0.18]	5.0	[0.20]
880811-2	3	17.5	[.689]	25.5	[1.004]	4.6	[0.18]	5.0	[0.20]
880814-1	5	27.5	[1.083]	35.0	[1.378]	6.5	[0.26]	7.0	[0.28]