

## Hydraulic Crimp Tooling

# New 10,000 psi-rated Tools with Industry-standard U-Dies, Also Available with Portable, Powered Pumps



### Fast Facts

- Standard 10,000 psi [68,950 kPa] rated hydraulic pumps and heads
- Interchangeable AMP-design U-dies for crimp force up to 14 tons [125 kN]
- U-die stroke options of 1 in [25 mm] and 1.5 in [38 mm]
- Termination range varies by product type
- Integrated head/die for crimping #8-2 AWG [7-34 mm<sup>2</sup>] SOLISTRAND terminals
- Heads compatible with shank-dies available for larger wires requiring crimp force greater than 14 tons [125 kN]
- Portable power, using a hand-held tool with rechargeable battery, or a Portable Battery Hydraulic Unit for standard crimping system
- Electric & manual hydraulic pumps for crimping at fixed locations
- Produced under a Quality Management System certified to ISO 9001. A copy of the certificate is available upon request.

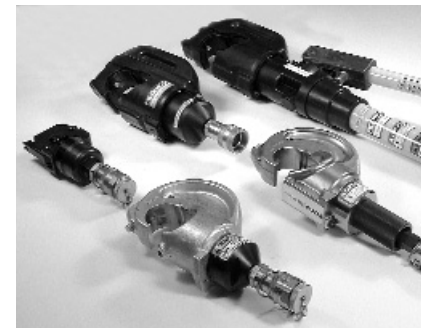
Tyco Electronics continues the quality tradition of AMP crimping tools with a new line of industry-standard 10,000 psi [68,950 kPa] hydraulic compression crimp heads, pumps, and interchangeable U-dies. A new battery-powered pump and tool options provide unprecedented portability for any crimping application.

The U-dies, made with the AMP-design precision and performance you've come to expect, are well suited for applications requiring a crimp force of up to 14 tons [125 kN]. For wire sizes requiring more than 14 tons [125 kN], Tyco Electronics offers five heavy-duty AMP crimp head configurations that are compatible with shank dies.

There are four light-duty crimp head options, including three in the U-die format. U-dies are available in two types, with 1 in [25 mm] and 1.5 in [38 mm] stroke, respectively. The two 12 ton [101 kN] head options have 1 in [25 mm] stroke. The 14 ton [125 kN] head is for larger products that call for a 1.5 in [38 mm] stroke. Also available is an integrated head/die for crimping #8 to #2 SOLISTRAND terminals. The heavy-duty heads are available in five different configurations.

**Note: These heads are not compatible with 8,200 psi [56,540 kPa] tooling.**

The basic 10,000 psi hydraulic tool system requires a pump, hose (multiple lengths are available with all configurations), crimp head, and crimp die. There is a Tyco Electronics hydraulic pump to meet the demands of any crimping application. For maximum portability, the hand-held crimping tool with rechargeable battery is an effective solution. Or, to power a standard crimping system at any location, order the Portable Battery Hydraulic Unit. For fixed crimping locations, you can choose between a 110V or 220V Electric Hydraulic Pump (with optional remote hand control), or manual foot and hand hydraulic pumps.



**U-Die Line up, including #8-#2 SOLISTRAND head, for 10,000 psi [68,950 kPa] systems providing up to 14 tons [125 kN] of crimp force**



**Shank-Die Line up, for wiring sizes requiring more than 14 tons [125 kN] of crimp force**

**tyco**  
Electronics

**AMP**

## Selecting a Hydraulic System?

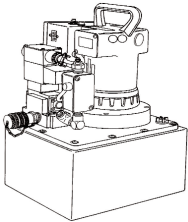
Have you remembered a...

- Pump
- Hose
- Hand or Foot control
- Crimp Head
- Crimp Die

- Powered systems require a pump, hand or foot control, hose, crimp head and die except with 1673672-1 (see below).
- The portable battery pump, 180411-1 (see back page), includes a hand control.
- Manual systems require hand tools (see below) and the battery hand tool (see back page) requires only dies.
- Refer to colored matrix throughout the catalog for die, head and hand tool options.

## HYDRAULIC TOOLING SELECTION GUIDE

### Hydraulic Pumps, Controls and Hoses



Heavy Duty Electric Hydraulic Pump (110V)<sup>1,2</sup> P/N 1804700-1  
OR  
Heavy Duty Electric Hydraulic Pump (220V)<sup>1,2</sup> P/N 1804700-2

WITH



Remote Hand Control<sup>3</sup>  
(for Heavy-Duty pump)  
w/hose attached

P/N 1901775-1 (7 ft hose)  
P/N 1901776-1 (15 ft hose)  
P/N 1901777-1 (21 ft hose)

OR



Remote Foot Control<sup>3</sup>  
(for Heavy-Duty pump)

P/N 68284-1

AND

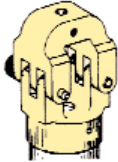


Hydraulic Hoses<sup>4</sup>  
(not required for hand control)  
P/N 1583662-1 (6 ft)  
P/N 1583662-2 (10 ft)  
P/N 1583662-3 (20 ft)

### Heavy-Duty Crimp Heads (Shank Dies) (> 25,000 cycles)



250 MCM - 600 MCM  
33 ton output force  
28 lbs  
P/N 1752788-1



8 - 4/0 A  
22 ton output force  
16 lbs  
P/N 1752877-1



4/0 AWG - 1000 MCM  
26 ton output force  
29 lbs  
P/N 1752786-1



8 - 4/0 AWG  
33 ton output force  
28 lbs  
P/N 1752787-1

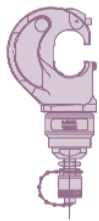


12-10 AWG - 350 MCM  
18 ton output force  
13 lbs  
P/N 1752868-1

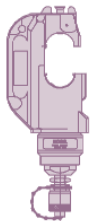


AMPLI-BOND	8 AWG - 4/0 AWG
AMPOWER	6 AWG - 1500 MCM
AMPOWER Quick Disconnect	1/0 AWG - 600 MCM
Insulation Piercing COPALUM	10 AWG (Cu) - 3/0 AWG
Sealed COPALUM	10 AWG - 3/0 AWG
Bar COPALUM	10 AWG (Cu) - 400 MCM
SOLISTRAND	8 AWG - 600 MCM
STRATOTHERM	8 AWG - 2/0 AWG
TERMINYL	1/0 AWG thru 4/0 AWG

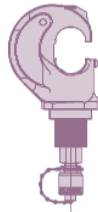
### Medium-Duty Crimp Heads & Hand Tools (U-Dies)



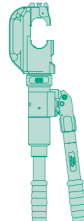
12 ton output force  
1" stroke  
Compression Head<sup>2</sup>  
U-Die Compatible  
P/N 1901820-1



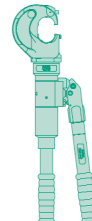
12 ton output force  
1.5" stroke  
Compression Head  
U-Die Compatible  
P/N 1901821-1



12 ton output force  
1" stroke Titanium  
Compression Head  
U-Die Compatible  
P/N 1490747-1



1.5" stroke Hand  
Compression Tool  
U-Die Compatible  
P/N 1490749-1



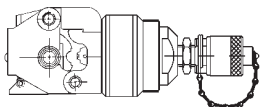
1" stroke Hand  
Compression Tool  
U-Die Compatible  
P/N 1490748-1



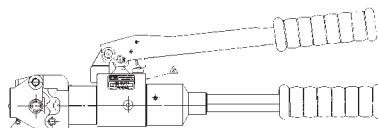
AMPLI-BOND	8 AWG - 2 AWG
AMPOWER	6 AWG - 4/0 AWG
SOLISTRAND	8 AWG - 4/0 AWG
TERMINYL	8 AWG - 1/0 AWG

**Not sure what's right for you? Call our Tooling Assistance Center specialists at 1-800-722-1111.**

### SOLISTRAND (Integrated Crimp Dies)



#8-#2 AWG SOLISTRAND  
Compression Head  
(No crimp dies required)  
P/N 1673672-1



#8-#2 AWG SOLISTRAND  
Compression Tool  
(No crimp dies required)  
P/N 59975-1

- <sup>1</sup> Portable Battery Pump 180411-1, Foot Pump 1583659-1 OR Hand Pump 1583661-1 can be substituted as manual options for Electro-Hydraulic Pumps (see back page).
- <sup>2</sup> Includes male screw-to-connect, 3/8" NPT quick couplers
- <sup>3</sup> Not required with manual pump options.
- <sup>4</sup> Includes female screw-to-connect, 3/8" NPT quick couplers

## Dies, Hand Tools, and Hydraulic Heads—Configuration Options

The Tyco Electronics hydraulic crimping tool line offers a wide array of die, hand tool, and hydraulic head configurations. Use the following tables to determine the configuration that best matches your requirements.

The tables are color-coded to help you identify the new 10,000 psi [68,950 kPa] rated configurations that correspond to previous 8,200 psi [56,540 kPa] tooling.

### TERMINYL™ Terminals and Splices

Wire Size in AWG [mm <sup>2</sup> ]	Hydraulic Crimp Tooling 10,000 psi Operating Pressure				DYNA-CRIMP System 8,200 psi Operating Pressure					
	Hand Tools (U-Die)	Hydraulic Heads (U-Die)	Hydraulic Heads (Shank Die)	Hydraulic Heads (Shank Die)	Hand Tool	Hydraulic Heads (Shank Die)	Hydraulic Heads (Shank Die)	Hydraulic Heads (Shank Die)		
	1490748-1	1490749-1	1901820-1, 1490747-1	1901821-1	1752877-1	1752787-1	59974-1 §	69051 §	69066	58422-1
8 [7-8.5]	1490597-1	1490597-1	1490597-1	1490597-1			47820 §	47820 §		
6 [13-15]	1490598-1	1490598-1	1490598-1	1490598-1			47821 §	47821 §		
4 [21]	1490599-1	1490599-1	1490599-1	1490599-1			47822 §	47822 §		
4HD					69463	69463			69463	69463
2 [34-35]		1490406-1		1490406-1			47823 §	47823 §		
1/0 [50-60]		1490700-1		1490700-1	47824	47824			47824	47824
2/0 [67-70]					47825	47825			47825	47825
3/0 [80-95]					47915	47915			47915	47915
4/0 [100-125]					47918	47918			47918	47918

### AMPLI-BOND™ and PLASTI-GRIP™ Terminals and Splices

Wire Size in AWG [mm <sup>2</sup> ]	Hydraulic Crimp Tooling 10,000 psi Operating Pressure				DYNA-CRIMP System 8,200 psi Operating Pressure			
	Hand Tool (U-Die)	Hydraulic Head (U-Die)	Hydraulic Heads (Shank Die)	Hydraulic Heads (Shank Die)	Hand Tool	Hydraulic Heads (Shank Die)	Hydraulic Heads (Shank Die)	Hydraulic Heads (Shank Die)
	1490749-1	1901821-1	1752877-1	1752787-1	59974-1 §	69051 §	69066	58422-1
8 [7-8.5]	1490534-1	1490534-1	48858-1	48858-1	48752-1 §	48752-1 §	48858-1	48858-1
6 [13-15]	1490535-1	1490535-1	48859-1	48859-1	48753-1 §	48753-1 §	48859-1	48859-1
4 [21]	1490536-1	1490536-1	48860-1	48860-1	48754-1 §	48754-1 §	48860-1	48860-1
2 [34-35]	1490410-1	1490410-1	48861-1	48861-1	48755-1 §	48755-1 §	48861-1	48861-1
1/0 [50-60]			48756-1	48756-1			48756-1	48756-1
2/0 [67-70]			48757-1	48757-1			48757-1	48757-1
3/0 [80-95]			48758-1	48758-1			48758-1	48758-1
4/0 [100-125]			48759-1	48759-1			48759-1	48759-1

### AMPLI-BOND™ and PLASTI-GRIP™ Large Expansion Terminals

Wire Size in AWG [mm <sup>2</sup> ]	Hydraulic Crimp Tooling 10,000 psi Operating Pressure		DYNA-CRIMP System 8,200 psi Operating Pressure	
	Hydraulic Heads (Shank Die)	Hydraulic Heads (Shank Die)	Hydraulic Heads (Shank Die)	Hydraulic Heads (Shank Die)
	1752877-1	1752787-1	69066	58422-1
8 [7-8.5]	47236-1	47236-1	47236-1	47236-1
6 [13-15]	47237-1	47237-1	47237-1	47237-1
4 [21]	47238-1	47238-1	47238-1	47238-1
2 [34-35]	47239-1	47239-1	47239-1	47239-1
1/0 [50-60]	47378-1	47378-1	47378-1	47378-1

§	These products will be discontinued
---	-------------------------------------

# SOLISTRAND™ Terminals

Hydraulic Crimp Tooling 10,000 psi Operating Pressure							DYNA-CRIMP System 8,200 psi Operating Pressure							
Wire Size in AWG [mm²]	Hand Tool (Dies Included)	Hand Tools (U-Die)	Hydraulic Heads (U-Die)	Hydraulic Heads (Shank Die)			Hand Tool	Hydraulic Heads	Hydraulic Heads (Shank Die)					
	59975-1 †	1490748-1, 1490749-1	1901820-1, 1901821-1, 1490747-1	1673672-1 †	1752868-1	1752788-1	1752786-1	59973-1 §	69065 §, 69067 §	69097 §	69069 † §	69099	58445-1	69082
8 [7-8.5]	+	1490413-1 * 1490414-1 **	1490413-1 * 1490414-1 **	+	69216			48126 * § 48355 ** §	48126 * § 48355 ** §	46146 * § 46145 ** §	+	69216		
6 [13-15]	+	1490413-2 * 1490414-2 **	1490413-2 * 1490414-2 **	+	69217			48128 * § 48127 ** §	48128 * § 48127 ** §	46134 * § 46133 ** §	+	69217		
4 [21]	+	1490413-3 * 1490414-2 **	1490413-3 * 1490414-2 **	+	69218			48129 * § 48127 ** §	48129 * § 48127 ** §	46135 * § 46133 ** §	+	69218		
2 [34-35]	+	1490413-4 * 1490414-2 **	1490413-4 * 1490414-2 **	+	45433			48130 * § 48127 ** §	48130 * § 48127 ** §	46136 * § 46133 ** §	+	45433		
1/0 [50-60]		1490413-5 * 1490414-3 **	1490413-5 * 1490414-3 **		45436			48132 * § 48131 ** §	48132 * § 48131 ** §	46138 * § 46137 ** §		45436		
2/0 [67-70]		1490413-6 * 1490414-3 **	1490413-6 * 1490414-3 **		45439			48133 * § 48131 ** §	48133 * § 48131 ** §			45439		
3/0 [80-95]		1490413-7 * 1490414-3 **	1490413-7 * 1490414-3 **		45442			48134 * § 48131 ** §	48134 * § 48131 ** §			45442		
4/0 [100-125]		1490413-8 * 1490414-3 **	1490413-8 * 1490414-3 **		45445			300430 * § 48131 ** §	300430 * § 48131 ** §			45445		
250-300 MCM [127-152]						48816	69911						48816	69911
300-350 MCM [152-177]						48817	69912						48817	69912
400 MCM [203]						48818	69913						48818	69913
500-600 MCM [253-304]						48819	69914						48819	69914

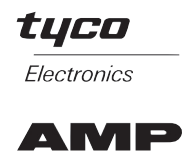
# Heavy Duty SOLISTRAND™ Terminals

Wire Size in AWG [mm²]	Hydraulic Crimp Tooling 10,000 psi Operating Pressure		DYNA-CRIMP System 8,200 psi Operating Pressure	
	Hand Tools (U-Die)	Hydraulic Heads (U-Die)	Hand Tool	Hydraulic Heads (Shank Die)
	1490748-1, 1490749-1	1901820-1, 1901821-1, 1490747-1	59973-1 §	69065 §, 69067 §
8 [7-8.5]	1490413-9 * 1490414-2 **	1490413-9 * 1490414-2 **	48128-1 * § 48127-1 ** §	48128-1 * § 48127-1 ** §
6 [13-15]	1-1490413-0 * 1490414-2 **	1-1490413-0 * 1490414-2 **	48129-1 * § 48127-1 ** §	48129-1 * § 48127-1 ** §
4 [21]	1-1490413-1 * 1490414-2 **	1-1490413-1 * 1490414-2 **	48130-1 * § 48127-1 ** §	48130-1 * § 48127-1 ** §
2 [34-35]	1-1490413-2 * 1490414-3 **	1-1490413-2 * 1490414-3 **	48132-1 * § 48131-1 ** §	48132-1 * § 48131-1 ** §
1/0 [50-60]	1-1490413-3 * 1490414-3 **	1-1490413-3 * 1490414-3 **	48133-1 * § 48131-1 ** §	48133-1 * § 48131-1 ** §

*	Stationary Die
**	Moving Die
†	Self-Contained Die
◇	Use Adapter 69760
×	Use Adapter 69834
§	These products will be discontinued

# SOLISTRAND™ Flag Terminals

Wire Size in AWG [mm²]	Hydraulic Crimp Tooling 10,000 psi Operating Pressure			DYNA-CRIMP System 8,200 psi Operating Pressure	
	Hand Tool (U-Die)	Hydraulic Head (U-Die)	Hydraulic Head (Shank Die)	Hydraulic Heads (Shank Die)	
	1490749-1	1901821-1	1752868-1	69067 §	69099
8 [7-8.5]	1752680-8 * 1752681-2 **	1752680-8 * 1752681-2 **	48506-1 * ◇ 48505-1 ** ×	48506 * § 48505 ** §	48506-1 * ◇ 48505-1 ** ×
6 [13-15]	1752680-7 * 1752681-3 **	1752680-7 * 1752681-3 **	48508-1 * ◇ 48507-1 ** ×	48508 * § 48507 ** §	48508-1 * ◇ 48507-1 ** ×
4 [21]	1752680-6 * 1752681-3 **	1752680-6 * 1752681-3 **	48509-1 * ◇ 48507-1 ** ×	48509 * § 48507 ** §	48509-1 * ◇ 48507-1 ** ×
2 [34-35]	1752680-5 * 1752681-3 **	1752680-5 * 1752681-3 **	48510-1 * ◇ 48507-1 ** ×	48510 * § 48507 ** §	48510-1 * ◇ 48507-1 ** ×
1/0 [50-60]	1752680-4 * 1752681-1 **	1752680-4 * 1752681-1 **	48652-1 * ◇ 48511-1 ** ×	48652 * § 48511 ** §	48652-1 * ◇ 48511-1 ** ×
2/0 [67-70]	1752680-3 * 1752681-1 **	1752680-3 * 1752681-1 **	48805-1 * ◇ 48511-1 ** ×	48805 * § 48511 ** §	48805-1 * ◇ 48511-1 ** ×
3/0 [80-95]	1752680-2 * 1752681-1 **	1752680-2 * 1752681-1 **	48806-1 * ◇ 48511-1 ** ×	48806 * § 48511 ** §	48806-1 * ◇ 48511-1 ** ×
4/0 [100-125]	1752680-1 * 1752681-1 **	1752680-1 * 1752681-1 **	48807-1 * ◇ 48511-1 ** ×	48807 * § 48511 ** §	48807-1 * ◇ 48511-1 ** ×



# Dies, Hand Tools, and Hydraulic Heads—Configuration Options



## AMPOWER™ Quick Disconnect Terminals

Wire Size in AWG [mm <sup>2</sup> ]	Hydraulic Crimp Tooling 10,000 psi Operating Pressure		DYNA-CRIMP System 8,200 psi Operating Pressure	
	Hydraulic Heads (Shank Die)		Hydraulic Heads (Shank Die)	
	1752868-1	1752786-1	69099	69082
1/0 [50-60]	68361-1 ○ / 68200-1		68361-1 ○ / 68200-1	
2/0 [67-70]	68253-1 ○ / 68201-1		68253-1 ○ / 68201-1	
3/0 [80-95]	59867-1 ○		59867-1 ○	
4/0 [100-125]	68304-1 ○		68304-1 ○	
250 MCM [127]	68203-1		68203-1	
350 MCM [177]		68204-1		68204-1
400 MCM [203]		68332-1 ●		68332-1 ●
500 MCM [253]		68206-1 ●		68206-1 ●
600 MCM [304]		46757-3		46757-3

○	With locator
●	Dual Crimp

## Insulation Piercing Crimp COPALUM™ Terminals and Splices

Wire Size in AWG [mm <sup>2</sup> ]		Hydraulic Crimp Tooling 10,000 psi Operating Pressure			DYNA-CRIMP System 8,200 psi Operating Pressure		
		Hand Tool (U-Die)	Hydraulic Head (U-Die)	Hydraulic Heads (Shank Die)		Hydraulic Heads (Shank Die)	
Al	Cu	1490749-1	1901821-1	1752868-1	1752786-1	69099	69082
8 [7-8.5]	10 [5-6]	1490714-1	1490714-1	68084		68084	
6 [13-15]	8 [7-8.5]	1490715-1	1490715-1	68085		68085	
4 [21]	6 [13-15]	1490716-1	1490716-1	68086		68086	
2 [34-35]	4 [21]	1490717-1	1490717-1	68130		68130	
1/0 [50-60]	2 [34-35]	1490718-1	1490718-1	68131		68131	
2/0 [67-70]	1/0 [50-60]			68132		68132	
3/0 [80-95]	2/0 [67-70]			68133		68133	
4/0 [100-125]	3/0 [80-95]			318106-1	68129	318106-1	68129

	Release Pending
--	-----------------

# Dies, Hand Tools, and Hydraulic Heads—Configuration Options



## AMPOWER™ Terminals and Splices

Wire Size in AWG [mm <sup>2</sup> ]	Hydraulic Crimp Tooling 10,000 psi Operating Pressure						DYNA-CRIMP System 8,200 psi Operating Pressure						
	Hand Tools (U-Die)		Hydraulic Heads (U-Die)		Hydraulic Heads (Shank Die)		Hand Tool	Hydraulic Heads (Shank Die)					
	I490748-1	I490749-1	I901820-1, I490747-1	I901821-1	I752868-1	I752788-1	I752786-1	59973-1 §	69065 §, 69067 §	68073-2	69099	58445-1	69082
6 [13-15]	I583092-1	I583092-1	I583092-1	I583092-1	69133-1						69133-1		
4 [21]	I583093-1	I583093-1	I583093-1	I583093-1	69134-2						69134-2		
2 [34-35]	I583094-1	I583094-1	I583094-1	I583094-1	46765-3			46321-3 §	46321-3 §		46765-3		
1/0 [50-60]	I583095-1	I583095-1	I583095-1	I583095-1	46766-2			46322-2 §	46322-2 §		46766-2		
2/0 [67-70]	I583096-1	I583096-1	I583096-1	I583096-1	46767-2			46323-2 §	46323-2 §		46767-2		
3/0 [80-95]					46749-2			46324-2 §	46324-2 §		46749-2		
4/0 [100-125]					46750-2			46325-2 §	46325-2 §		46750-2		
250 MCM [127]					46751-2	46326-2					46751-2	46326-2	
300 MCM [152]					46752-2						46752-2		
350 MCM [177]					46753-2		69653				46753-2		69653
400 MCM [203]							46754-2						46754-2
500 MCM [253]							46755-2						46755-2
600 MCM [304]							46756-2						46756-2
600 HD							59870-1						59870-1
700 MCM [355]							46757-2						46757-2
800 MCM [405]							46758-2						46758-2
900 MCM [456]							46759-2						46759-2
1000 MCM [507]							46760-2						46760-2
1250 MCM [634]										68114-1			
1500 MCM [761]										68282-1			

§	These products will be discontinued
---	-------------------------------------

# Dies, Hand Tools, and Hydraulic Heads—Configuration Options



## Sealed Crimp COPALUM™ Terminals and Splices

Wire Size in AWG [mm <sup>2</sup> ]		Hydraulic Crimp Tooling 10,000 psi Operating Pressure				DYNA-CRIMP System 8,200 psi Operating Pressure	
		Hand Tool (U-Die)	Hydraulic Head (U-Die)	Hydraulic Heads (Shank Die)		Hydraulic Heads (Shank Die)	
Al	Cu	1490749-1	1901821-1	1752877-1	1752787-1	69066	58422-1
8 [7-8.5]	10 [5-6]	1490555-1	1490555-1	68006	68006	68006	68006
6 [13-15]	8 [7-8.5]	1490556-1	1490556-1	68007	68007	68007	68007
4 [21]	6 [13-15]	1490557-1	1490557-1	68008	68008	68008	68008
2 [34-35]	4 [21]			68009	68009	68009	68009
1/0 [50-60]	2 [34-35]			68010-1	68010-1	68010-1	68010-1
2/0 [67-70]	1/0 [50-60]			314964-1	68011-1	314964-1	68011-1
3/0 [80-95]	2/0 [67-70]				59877-1		59877-1
4/0 [100-125]	3/0 [80-95]				314948-1		314948-1

## Bar Crimp COPALUM™ Terminals and Splices

Wire Size in AWG [mm <sup>2</sup> ]		Hydraulic Crimp Tooling 10,000 psi Operating Pressure				DYNA-CRIMP System 8,200 psi Operating Pressure	
		Hand Tool (U-Die)	Hydraulic Head (U-Die)	Hydraulic Heads (Shank Die)		Hydraulic Heads (Shank Die)	
Al	Cu	1490749-1	1901821-1	1752868-1	1752786-1	69099	69082
8 [7-8.5]	10 [5-6]	1490572-1	1490572-1	68043		68043	
6 [13-15]	8 [7-8.5]	1490573-1	1490573-1	68044		68044	
4 [21]	6 [13-15]	1490574-1	1490574-1	68045		68045	
2 [34-35]	4 [21]	1490575-1	1490575-1	68046		68046	
1/0 [50-60]	2 [34-35]			68047		68047	
2/0 [67-70]	1/0 [50-60]			68048		68048	
3/0 [80-95]	2/0 [67-70]			68049		68049	
4/0 [100-125]	3/0 [80-95]				68050		68050
250 MCM [127]	4/0 [100-125]				68034		68034
300 MCM [152]	250 MCM [127]				68035		68035
400 MCM [203]	300 MCM [152]				68036		68036
500 MCM [253]	400 MCM [203]				68037		68037



**STRATO-THERM™ Terminals and Splices**

	Hydraulic Crimp Tooling 10,000 psi Operating Pressure	DYNA-CRIMP System 8,200 psi Operating Pressure
	Hydraulic Head (Shank Die)	Hydraulic Head (Shank Die)
Wire Size AWG [mm <sup>2</sup> ]	1752868-1	69099
8 [7-8.5]	69211-1	69211-1
6 [13-15]	69212-1	69212-1
4 [21]	69213-1	69213-1
2 [34-35]	69214-1	69214-1
1/0 [50-60]	69215-1	69215-1
2/0 [67-70]	69254-1	69254-1

**Heavy-Duty Seamless Terminals (UL Approved)**

(Straight Ring Tongue Terminals Only)

	Hand Tools U-Die	Hydraulic Heads U-Die
Wire Size	1490748-4 1490749-1	1901820-1 1901821-1 1490747-1
8	1-1490413-4 * 1901657-1 **	1-1490413-4 * 1901657-1 **
6	1-1490413-5 * 1901657-2 **	1-1490413-5 * 1901657-2 **
4	1-1490413-6 * 1901657-2 **	1-1490413-6 * 1901657-2 **
2	1-1490413-7 * 1901657-2 **	1-1490413-7 * 1901657-2 **
1/0*	1-1490413-8 * 901657-3 **	1-1490413-8 * 901657-3 **
2/0*	1-1490413-9 * 1901657-3 **	1-1490413-9 * 1901657-3 **
3/0*	2-1490413-0 * 1901657-3 **	2-1490413-0 * 1901657-3 **
4/0*	2-1490413-1 * 1901657-3 **	2-1490413-1 * 1901657-3 **

*	Stationary Die
**	Moving Die

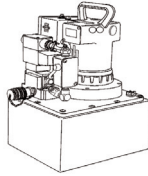
**Pumps for Fixed Locations**

For fixed crimping locations, choose for fixed crimping between a 110 or 220 V Electric Hydraulic Pump (with optional remote hand control), or manual foot and hand hydraulic pumps.

**Heavy-Duty Electric Hydraulic Pump**

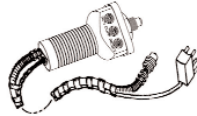
P/N 1804700-1 (110 V)  
or 1804700-2 (220 V)

- 2 1/2 gallon reservoir
- 1 1/2 HP Motor
- 56 cu. in. flow rate
- 65 lbs



**Remote Hand Control (for Electric Hydraulic Pump)**

1901775-1 (7 ft hose)  
1901776-1 (15 ft hose)  
1901777-1 (21 ft hose)



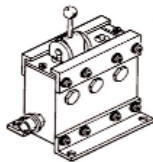
**Remote Foot Control (for Electric Hydraulic Pump)**

P/N 68284-1



**3-Way Multidirectional Valve**

P/N 1901782-1 (Manual)  
P/N 1901783-1 (Electric)



**Manual Pumps**

**Foot Hydraulic Pump**

P/N 1583659-1



**Hand Hydraulic Pump**

P/N 1583661-1



- Not for steel or ACSR cable

**Portability Options**

Portable tools and pump units allow you to perform crimping where it's needed—in the factory or in the field.

**Portable Battery Hydraulic Unit**



Kit includes hand control,  
hose not included.  
See page 2.

1804111-1	Portable Battery Unit (10,000-psi [68,950 kPa])
1804112-1	Nickel-Metal Hydride Battery Pack
1804113-1	Nickel-Cadmium Battery Pack
1804114-1	Battery Charger 110V
1804117-1	Control Switch Sub-assembly

**Hydraulic Crimping Tool with Rechargeable Battery**

P/N 1213875-1	Crimping Tool Kit
P/N 1213872-1	Battery
P/N 1213873-1	Battery Charger



Self contained power unit.  
Crimp dies not included.

Compatible with same dies as 12 ton  
[101 kN] 1 in [25 mm] Compression Head,  
P/N 1901820-1



Need More Information?

For information about tooling, call 1-800-522-6752  
or e-mail [toolsales@tycoelectronics.com](mailto:toolsales@tycoelectronics.com).

For drawings or technical data, contact your Tyco Electronics sales engineer or call the Technical Support Center: 1-800-522-6752. Dimensions are in millimeters unless specified otherwise. Values in brackets are English equivalents unless specified otherwise. Specifications subject to change. Consult Tyco Electronics for latest specifications.