

Carbon Film Resistors, Special Purpose, High Voltage



FEATURES

- Ratings to 100 W, 125 kV
- Available with either radial bands or ferrule terminals
- Standard models epoxy/enamel coated, additional vinyl heat shrink sleeve available for added protection
- Model G is non-inductive
- $\pm 20\%$ tolerance standard, tolerances of $\pm 15\%$, $\pm 10\%$ and $\pm 5\%$ available
- See models B and T for general purpose high voltage carbon film resistors

STANDARD ELECTRICAL SPECIFICATIONS						
GLOBAL MODEL	HISTORICAL MODEL	POWER RATING $P_{70^\circ\text{C}}$ W	MAXIMUM WORKING VOLTAGE ⁽¹⁾ V	RESISTANCE RANGE ⁽²⁾ Ω	TOLERANCE ⁽³⁾ $\pm\%$	STYLE
DJU	DJU	10	25K	50K to 500M	5, 10, 15, 20	3
DPW	DPW	20	35K	100K to 500M	5, 10, 15, 20	3
DPW..1	DPW-1	20	35K	100K to 500M	5, 10, 15, 20	4
DPX	DPX	30	65K	100K to 500M	5, 10, 15, 20	3
DPX..1	DPX-1	30	65K	100K to 500M	5, 10, 15, 20	4
DVY	DVY	60	90K	400K to 500M	5, 10, 15, 20	3
DVY..1	DVY-1	60	90K	400K to 500M	5, 10, 15, 20	4
DZW	DZW	35	40K	300K to 500M	5, 10, 15, 20	3
DZW..1	DZW-1	35	40K	300K to 500M	5, 10, 15, 20	4
DZZ	DZZ	100	125K	700K to 500M	5, 10, 15, 20	3
DZZ..1	DZZ-1	100	125K	700K to 500M	5, 10, 15, 20	4
GJU	GJU	10	16K	1K to 1M	5, 10, 15, 20	3
GPW	GPW	20	18K	1K to 1M	5, 10, 15, 20	3
GPW..1	GPW-1	20	18K	1K to 1M	5, 10, 15, 20	4
GPX	GPX	30	25K	1K to 1M	5, 10, 15, 20	3
GPX..1	GPX-1	30	25K	1K to 1M	5, 10, 15, 20	4
GVY	GVY	60	30K	1K to 5M	5, 10, 15, 20	3
GVY..1	GVY-1	60	30K	1K to 5M	5, 10, 15, 20	4
GZW	GZW	35	20K	1K to 1M	5, 10, 15, 20	3
GZW..1	GZW-1	35	20K	1K to 1M	5, 10, 15, 20	4
GZZ	GZZ	100	32K	1K to 10M	5, 10, 15, 20	3
GZZ..1	GZZ-1	100	32K	1K to 10M	5, 10, 15, 20	4

Non-Inductive

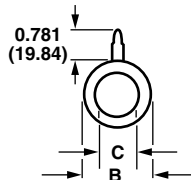
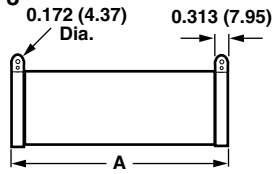
Notes

- (1) Continuous working voltage shall be $\sqrt{P \times R}$ or maximum working voltage, whichever is less.
 (2) All resistance values are calibrated at 100 V_{DC}-calibration at other voltages available on request.
 (3) $\pm 20\%$ standard, $\pm 5\%$, $\pm 10\%$, and $\pm 15\%$ are available.

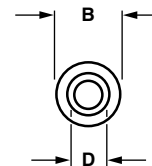
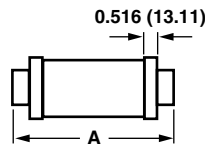
GLOBAL PART NUMBER INFORMATION				
New Global Part Numbering: DPW2M50LB191 (preferred part numbering format)				
D	P	W	2	M 5 0 L B 1 9 1
GLOBAL MODEL (See Standard Electrical Specifications table)	RESISTANCE VALUE R = Ω K = k Ω M = M Ω 100R = 100 Ω 13K0 = 13 k Ω 500M = 500 M Ω	TOLERANCE CODE J = $\pm 5\%$ K = $\pm 10\%$ L = $\pm 15\%$ M = $\pm 20\%$	PACKAGING E19 = Lead (Pb)-free, Bulk E03 = Lead (Pb)-free, Skin B19 = Tin/Lead, Bulk J03 = Tin/Lead, Skin	SPECIAL Blank = Standard (Dash Number) (up to 3 digits) From 1 to 999 as applicable 1 = Ferrule Terminals
Historical Part Number example: DPW-12M50L (will continue to be accepted)				
DPW-1	2M50	L	B19	
HISTORICAL MODEL	RESISTANCE VALUE	TOLERANCE CODE	PACKAGING	

DIMENSIONS in inches (millimeters)

Style 3



Style 4

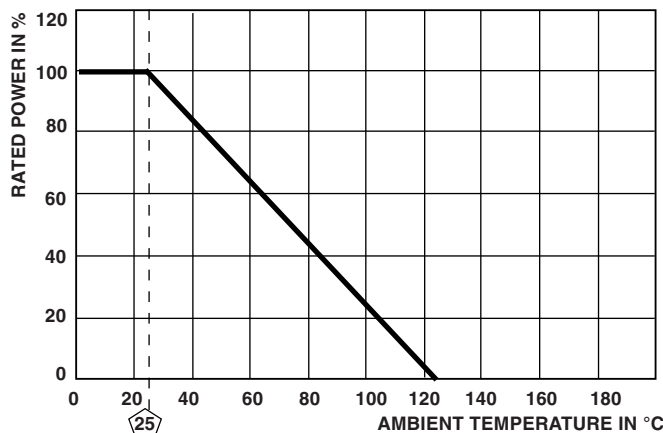


GLOBAL MODEL	STYLE	A	B (1)	C	D
DJU	3	4.50 (114.30)	0.750 (19.05)	0.50 (12.70)	N/A
DPW	3	6.50 (165.10)	1.13 (28.70)	0.75 (19.05)	N/A
DPW..1	4	7.69 (195.33)	1.13 (28.70)	N/A	0.812 (20.62)
DPX	3	10.50 (266.70)	1.13 (28.70)	0.75 (19.05)	N/A
DPX..1	4	11.69 (296.93)	1.13 (28.70)	N/A	0.812 (20.62)
DVY	3	14.50 (368.30)	1.50 (38.10)	1.13 (28.70)	N/A
DVY..1	4	15.69 (398.53)	1.50 (38.10)	N/A	1.14 (28.96)
DZW	3	6.50 (165.10)	2.0 (50.80)	1.56 (39.62)	N/A
DZW..1	4	7.69 (195.33)	2.0 (50.80)	N/A	1.14 (28.96)
DZZ	3	18.50 (469.90)	2.0 (50.80)	1.56 (39.62)	N/A
DZZ..1	4	19.69 (500.13)	2.0 (50.80)	N/A	1.14 (28.96)
GJU	3	4.50 (114.30)	0.750 (19.05)	0.50 (12.70)	N/A
GPW	3	6.50 (165.10)	1.13 (28.70)	0.75 (19.05)	N/A
GPW..1	4	7.69 (195.33)	1.13 (28.70)	N/A	0.812 (20.62)
GPX	3	10.50 (266.70)	1.13 (28.70)	0.75 (19.05)	N/A
GPX..1	4	11.69 (296.93)	1.13 (28.70)	N/A	0.812 (20.62)
GVY	3	14.50 (368.30)	1.50 (38.10)	1.13 (28.70)	N/A
GVY..1	4	15.69 (398.53)	1.50 (38.10)	N/A	1.14 (28.96)
GZW	3	6.50 (165.10)	2.0 (50.80)	1.56 (39.62)	N/A
GZW..1	4	7.69 (195.33)	2.0 (50.80)	N/A	1.14 (28.96)
GZZ	3	18.50 (469.90)	2.0 (50.80)	1.56 (39.62)	N/A
GZZ..1	4	19.69 (500.13)	2.0 (50.80)	N/A	1.14 (28.96)

Note

(1) Dimensional tolerances are $\pm 0.016''$ (0.406 mm) or $\pm 1\%$, whichever is greater.

DERATING



MARKING

- Dale
- Model
- Value
- Tolerance
- Date code



Disclaimer

All product specifications and data are subject to change without notice.

Vishay Intertechnology, Inc., its affiliates, agents, and employees, and all persons acting on its or their behalf (collectively, "Vishay"), disclaim any and all liability for any errors, inaccuracies or incompleteness contained herein or in any other disclosure relating to any product.

Vishay disclaims any and all liability arising out of the use or application of any product described herein or of any information provided herein to the maximum extent permitted by law. The product specifications do not expand or otherwise modify Vishay's terms and conditions of purchase, including but not limited to the warranty expressed therein, which apply to these products.

No license, express or implied, by estoppel or otherwise, to any intellectual property rights is granted by this document or by any conduct of Vishay.

The products shown herein are not designed for use in medical, life-saving, or life-sustaining applications unless otherwise expressly indicated. Customers using or selling Vishay products not expressly indicated for use in such applications do so entirely at their own risk and agree to fully indemnify Vishay for any damages arising or resulting from such use or sale. Please contact authorized Vishay personnel to obtain written terms and conditions regarding products designed for such applications.

Product names and markings noted herein may be trademarks of their respective owners.