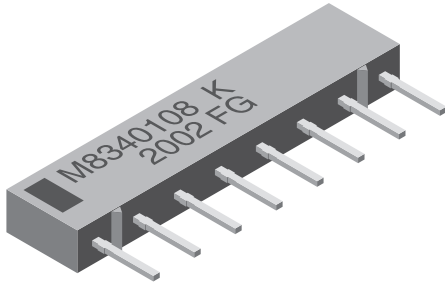


## Thick Film Resistor Networks, Military, MIL-PRF-83401 Qualified, Type RZ040 to RZ090, Single-In-Line, Molded SIP



### FEATURES

- Isolated, bussed and dual terminator schematics available
- MIL-PRF-83401 qualified
- 0.195" (4.95 mm) "A" and 0.350" (8.89 mm) "C" maximum seated heights
- Thick film resistive elements
- TCR available in "K" ( $\pm 100$  ppm/ $^{\circ}$ C) or "M" ( $\pm 300$  ppm/ $^{\circ}$ C) characteristic
- All device leads are hot-solder dipped
- Rugged molded case construction
- Compatible with automatic insertion equipment
- 100 % screen tested per group A, subgroup 1 of MIL-PRF-83401
- All devices are capable of passing the MIL-STD-202, method 210, condition D "Resistance to Soldering Heat" test
- Available in tube pack

### STANDARD ELECTRICAL SPECIFICATIONS

VISHAY DALE MODEL/ PIN NO/ PROFILE	MIL STYLE	MIL SPEC. SHEET	SCHEMATIC	POWER RATING		RESISTANCE RANGE $\Omega$	TOLERANCE <sup>(1)</sup> $\pm$ %	TEMPERATURE COEFFICIENT <sup>(2)</sup> (- 55 $^{\circ}$ C to + 125 $^{\circ}$ C) $\pm$ ppm/ $^{\circ}$ C	WEIGHT g
				ELEMENT $P_{70^{\circ}\text{C}}$ W	PACKAGE $P_{70^{\circ}\text{C}}$ W				
MSM06C	RZ040	04	01 (C)	0.20	1.00	10 to 1M	1, 2, 5	100, 300	0.7
			03 (G)	0.20	0.60	10 to 1M			
			05 (H)	0.11	0.88	Consult factory			
MSM08C	RZ050	05	01 (C)	0.20	1.40	10 to 1M	1, 2, 5	100, 300	0.9
			03 (G)	0.20	0.80	10 to 1M			
			05 (H)	0.11	1.32	Consult factory			
MSM10C	RZ060	06	01 (C)	0.20	1.80	10 to 1M	1, 2, 5	100, 300	1.1
			03 (G)	0.20	1.00	10 to 1M			
			05 (H)	0.11	1.80	Consult factory			
MSM06A	RZ070	07	01 (C)	0.12	0.60	10 to 1M	1, 2, 5	100, 300	0.4
			03 (G)	0.12	0.36	10 to 1M			
			05 (H)	0.07	0.60	Consult factory			
MSM08A	RZ080	08	01 (C)	0.12	0.84	10 to 1M	1, 2, 5	100, 300	0.5
			03 (G)	0.12	0.48	10 to 1M			
			05 (H)	0.07	0.84	Consult factory			
MSM10A	RZ090	09	01 (C)	0.12	1.08	10 to 1M	1, 2, 5	100, 300	0.6
			03 (G)	0.12	0.60	10 to 1M			
			05 (H)	0.07	1.08	Consult factory			

#### Notes

<sup>(1)</sup>  $\pm 2$  % standard,  $\pm 1$  % and  $\pm 5$  % available

<sup>(2)</sup> K =  $\pm 100$  ppm/ $^{\circ}$ C; M =  $\pm 300$  ppm/ $^{\circ}$ C

### GLOBAL PART NUMBER INFORMATION

**New Global Part Numbering: M8340107K1003GCD03 (preferred part numbering format)**

MIL STYLE	SPEC SHEET	CHARACTERISTIC	RESISTANCE VALUE	TOLERANCE	SCHEMATIC	PACKAGING
M83401	04 = 6 pin, "C" profile 05 = 8 pin, "C" profile 06 = 10 pin, "C" profile 07 = 6 pin, "A" profile 08 = 8 pin, "A" profile 09 = 10 pin, "A" profile	K = 100 ppm M = 300 ppm	3 digit significant figure, followed by a multiplier 10R0 = 10 Ω 3302 = 33 kΩ 1004 = 1 MΩ	F = ± 1 % G = ± 2 % J = ± 5 %	C = Bussed G = Isolated	D03 = Tin/lead, tube DSL = Tin/lead, tube, single lot date code

**Historical Part Number example: M8340107K1003GC (will continue to be accepted)**

MIL STYLE	SPEC SHEET	CHARACTERISTIC	RESISTANCE VALUE	TOLERANCE	SCHEMATIC	PACKAGING
M83401	07	K	1003	G	C	D03

**New Global Part Numbering: M8340104KA001GHD03 (preferred part numbering format)**

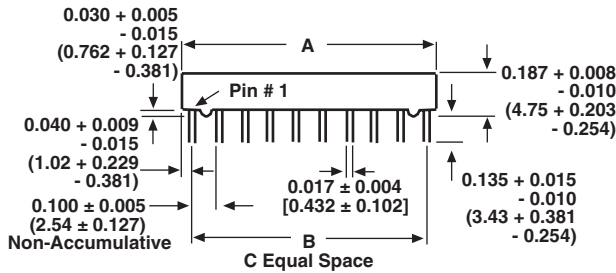
MIL STYLE	SPEC SHEET	CHARACTERISTIC	RESISTANCE VALUE	TOLERANCE	SCHEMATIC	PACKAGING
M83401	04 = 6 pin, "C" profile 05 = 8 pin, "C" profile 06 = 10 pin, "C" profile 07 = 6 pin, "A" profile 08 = 8 pin, "A" profile 09 = 10 pin, "A" profile	K = 100 ppm M = 300 ppm	Per std. Mil. Spec (see Impedance Codes table)	F = ± 1 % G = ± 2 % J = ± 5 %	H = Dual terminator	D03 = Tin/lead, tube DSL = Tin/lead, tube, single lot date code

**Historical Part Number example: M8340104KA001GH (will continue to be accepted)**

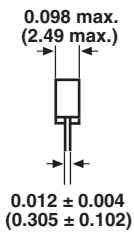
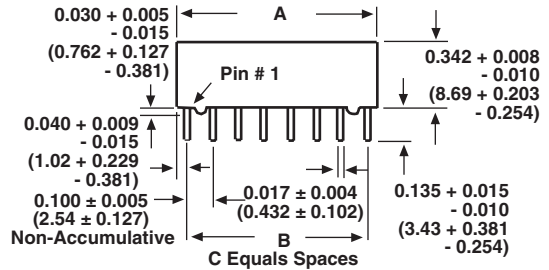
MIL STYLE	SPEC SHEET	CHARACTERISTIC	RESISTANCE VALUE	TOLERANCE	SCHEMATIC	PACKAGING
M83401	04	K	A001	G	H	D03

### DIMENSIONS in inches (millimeters)

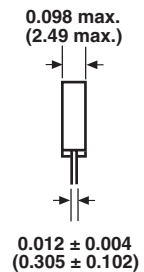
#### "A" Profile



#### "C" Profile



VISHAY DALE MODEL	A	B	C
MSM06	0.583 ± 0.015 (14.81 ± 0.381)	0.500 (12.70)	5
MSM08	0.783 ± 0.015 (19.89 ± 0.381)	0.700 (17.78)	7
MSM10	0.983 ± 0.015 (24.97 ± 0.381)	0.900 (22.86)	9



TECHNICAL SPECIFICATIONS		
PARAMETER	UNIT	MSM SERIES
Maximum Operating Voltage	V <sub>DC</sub>	50
Voltage Coefficient of Resistance	V <sub>eff</sub>	< 50 ppm
Dielectric Strength	V <sub>AC</sub>	200 min.
Insulation Resistance	Ω	10 000 M
Operating Temperature Range	°C	- 55 to + 125
Storage Temperature Range	°C	- 55 to + 150

MECHANICAL SPECIFICATIONS	
Body	Molded epoxy
Terminals	Copper alloy, hot-solder dipped
Solderability	Per MIL-PRF-83401

**CAGE CODE: 91637 and SH903**

# MSM (Military M83401)



Vishay Dale Thick Film Resistor Networks, Military, MIL-PRF-83401 Qualified, Type RZ040 to RZ090, Single-In-Line, Molded SIP

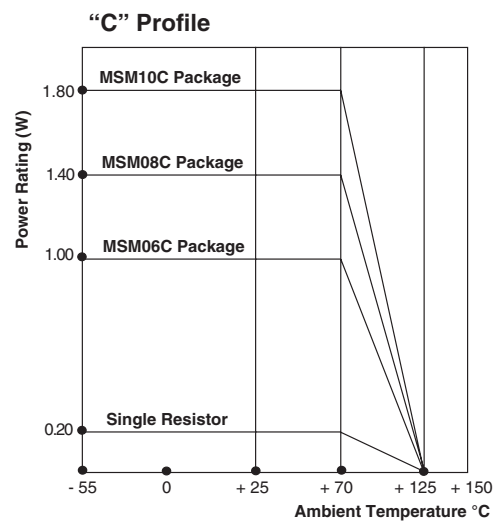
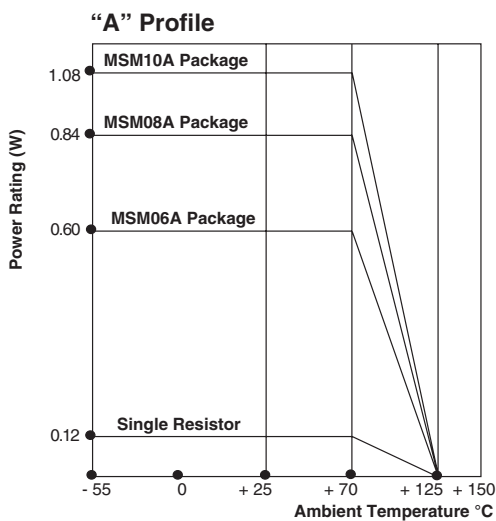
MILITARY IMPEDANCE CODES					
CODE	R <sub>1</sub> (Ω)	R <sub>2</sub> (Ω)	CODE	R <sub>1</sub> (Ω)	R <sub>2</sub> (Ω)
A001	82	130	A011	330	680
A002	120	200	A012	1.5K	3.3K
A003	130	210	A013	3K	6.2K
A004	160	260	A014	180	270
A005	180	240	A015	270	270
A006	180	390	A016	560	560
A007	220	270	A017	560	1.2K
A008	220	330	A018	620	2.7K
A009	330	390	A019 <sup>(1)</sup>	150	1K
A010	330	470	A020 <sup>(1)</sup>	1K	1K

**Note**

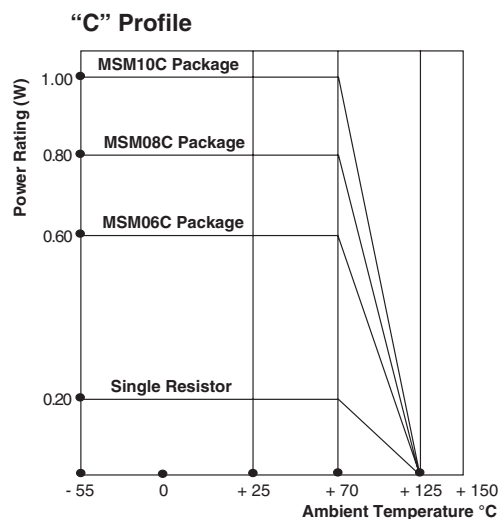
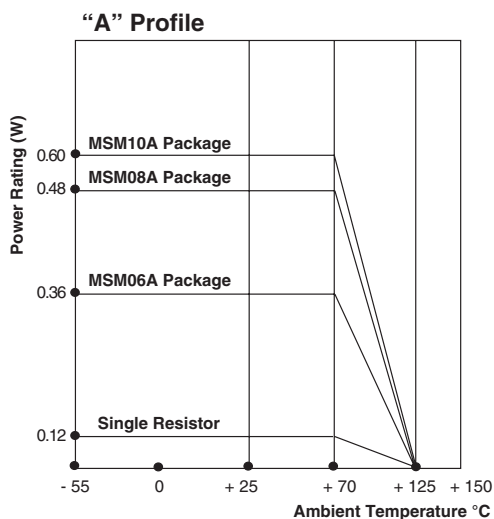
<sup>(1)</sup> Offered for the M83401/09 product only

## DERATING

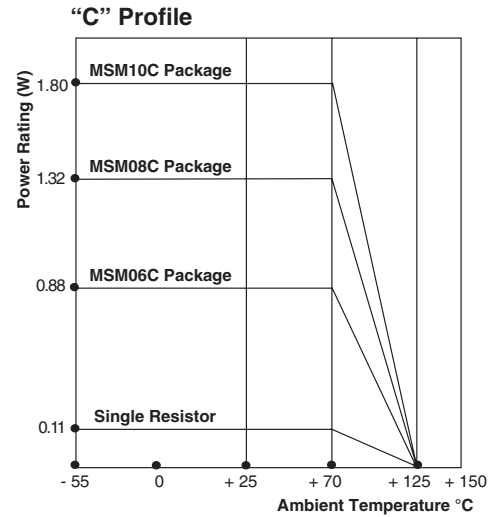
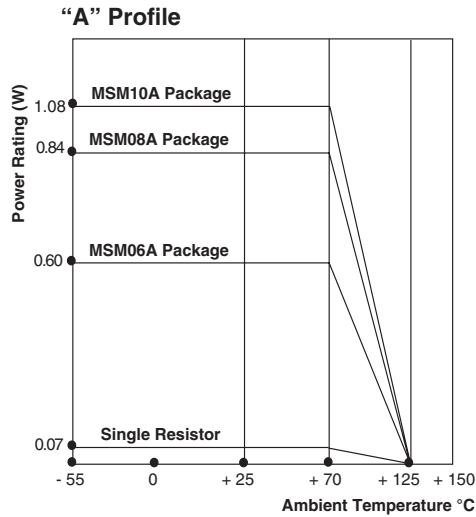
### 01 Schematic



### 03 Schematic

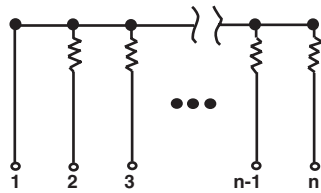


## 05 Schematic



## CIRCUIT APPLICATIONS

### 01 Schematic



5, 7 or 9 resistors with one pin common

"A" Profile

MSM06A01 (M8340107xxxxxC)

MSM08A01 (M8340108xxxxxC)

MSM10A01 (M8340109xxxxxC)

"C" Profile

MSM06C01 (M8340104xxxxxC)

MSM08C01 (M8340105xxxxxC)

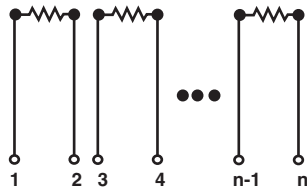
MSM10C01 (M8340106xxxxxC)

The MSM06A01, MSM08A01, MSM10A01, MSM06C01, MSM08C01 and MSM10C01 molded single-in-line resistor networks provide the user with a choice of 5, 7 or 9 nominally equal resistors, each connected to a common pin (Pin No. 1).

Commonly used in the following applications:

- "Wired OR" Pull-up
- Power Gate Pull-up
- MOS/ROM Pull-up/Pull-down
- Open Collector Pull-up
- TTL Input Pull-down
- TTL Unused Gate Pull-up

### 03 Schematic



3, 4 or 5 isolated resistors

"A" Profile

MSM06A03 (M8340107xxxxxG)

MSM08A03 (M8340108xxxxxG)

MSM10A03 (M8340109xxxxxG)

"C" Profile

MSM06C03 (M8340104xxxxxG)

MSM08C03 (M8340105xxxxxG)

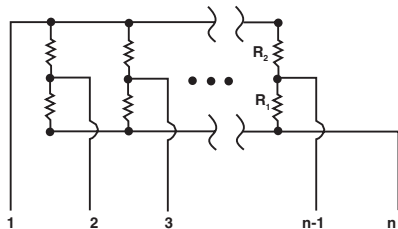
MSM10C03 (M8340106xxxxxG)

The MSM06A03, MSM08A03, MSM10A03, MSM06C03, MSM08C03 and MSM10C03 molded single-in-line resistor networks provide the user with a choice of 3, 4 or 5 nominally equal resistors. Each resistor is isolated from all others.

Commonly used in the following applications:

- "Wired OR" Pull-up
- Power Driven Pull-up
- Power Gate Pull-up
- Line Termination
- Long-Line Impedance Balance
- LED Current Limiting
- ECL Output Pull-down
- TTL Input Pull-down

### 05 Schematic



4, 6 or 8 resistor pairs

"A" Profile

MSM06A05 (M8340107xxxxxH)

MSM08A05 (M8340108xxxxxH)

MSM10A05 (M8340109xxxxxH)

"C" Profile

MSM06C05 (M8340104xxxxxH)

MSM08C05 (M8340105xxxxxH)

MSM10C05 (M8340106xxxxxH)

The MSM06A05, MSM08A05, MSM10A05, MSM06C05, MSM08C05 and MSM10C05 molded single-in-line resistor networks provide the user with a choice of 4, 6 or 8 pair of R1/R2 resistor values for pulse squaring and TTL dual-line terminating requirements.

# MSM (Military M83401)



Vishay Dale Thick Film Resistor Networks, Military, MIL-PRF-83401 Qualified,  
Type RZ040 to RZ090, Single-In-Line, Molded SIP

PERFORMANCE		
TEST	CONDITIONS	MAX. $\Delta R$ (TYPICAL TEST LOTS)
Power Conditioning	1.5 x rated power, applied 1.5 h "ON" and 0.5 h "OFF" for 100 h $\pm$ 4 h at + 25 °C ambient temperature	$\pm$ 0.50 % $\Delta R$
Thermal Shock	5 cycles between - 65 °C and + 125 °C	$\pm$ 0.50 % $\Delta R$
Short Time Overload	2.5 x rated working voltage for 5 s	$\pm$ 0.25 % $\Delta R$ (Characteristic K) $\pm$ 0.50 % $\Delta R$ (Characteristic M)
Low Temperature Operation	45 min at full rated working voltage at - 65 °C	$\pm$ 0.25 % $\Delta R$ (Characteristic K) $\pm$ 0.50 % $\Delta R$ (Characteristic M)
Moisture Resistance	240 h with humidity ranging from 80 % RH to 98 % RH	$\pm$ 0.50 % $\Delta R$
Resistance to Soldering Heat	Leads immersed in + 260 °C solder to within 1/16" of body for 10 s	$\pm$ 0.25 % $\Delta R$
Shock	Total of 18 shocks at 100 g's	$\pm$ 0.25 % $\Delta R$
Vibration	12 h at maximum of 20 g's between 10 Hz and 2000 Hz	$\pm$ 0.25 % $\Delta R$
Load Life	1000 h at + 70 °C, rated power applied 1.5 h "ON", 0.5 h "OFF" for full 1000 h period	$\pm$ 0.50 % $\Delta R$ (Characteristic K) $\pm$ 2.00 % $\Delta R$ (Characteristic M)
Terminal Strength	4 1/2 pound pull for 30 s	$\pm$ 0.25 % $\Delta R$
Insulation Resistance	10 000 M $\Omega$ (minimum)	-
Dielectric Withstanding Voltage	No evidence of arcing or damage (200 V <sub>RMS</sub> for 1 min)	-



## Disclaimer

All product specifications and data are subject to change without notice.

Vishay Intertechnology, Inc., its affiliates, agents, and employees, and all persons acting on its or their behalf (collectively, "Vishay"), disclaim any and all liability for any errors, inaccuracies or incompleteness contained herein or in any other disclosure relating to any product.

Vishay disclaims any and all liability arising out of the use or application of any product described herein or of any information provided herein to the maximum extent permitted by law. The product specifications do not expand or otherwise modify Vishay's terms and conditions of purchase, including but not limited to the warranty expressed therein, which apply to these products.

No license, express or implied, by estoppel or otherwise, to any intellectual property rights is granted by this document or by any conduct of Vishay.

The products shown herein are not designed for use in medical, life-saving, or life-sustaining applications unless otherwise expressly indicated. Customers using or selling Vishay products not expressly indicated for use in such applications do so entirely at their own risk and agree to fully indemnify Vishay for any damages arising or resulting from such use or sale. Please contact authorized Vishay personnel to obtain written terms and conditions regarding products designed for such applications.

Product names and markings noted herein may be trademarks of their respective owners.