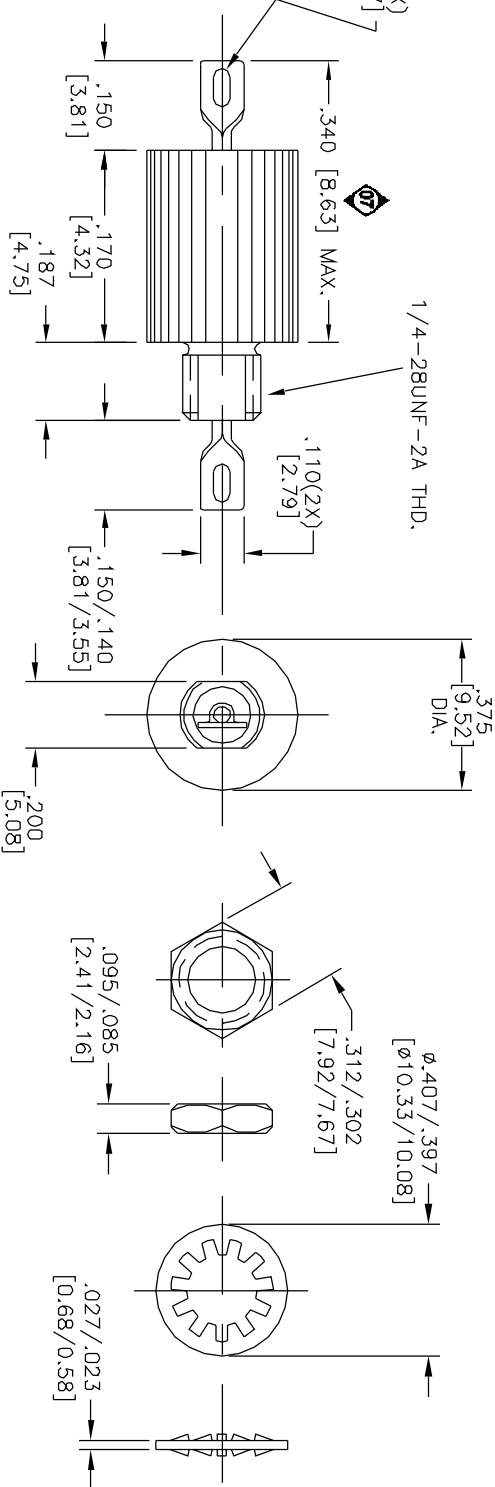


CASE FINISH	CURRENT (AMPS)	WORKING VOLTAGE			MAXIMUM DC RESISTANCE (OHMS)	MAXIMUM VOLTAGE DROP		MINIMUM CAPACITANCE (uF)	MIN. INSERTION LOSS PER MIL-STD-220, FULL LOAD, +25°C										
	AC	DC	AC	DC		DC	AC		14 KHZ	30 KHZ	50 KHZ	75 KHZ	100 KHZ	150 KHZ	300 KHZ	500 KHZ	1 MHz	10 MHz	100 MHz
SOLDER	15	---	80	---	0.005	---	---	---	---	---	---	---	28	34	---	44	60	70	---

PART MARKING:
SCI
9051-100-0000
DATE CODE

.050X.070 Slot (2X)
[1.27X1.77]



SCHEMATIC



MTG. HARDWARE

NOTES:

1) MOUNTING TORQUE NOT TO EXCEED 7in-lbs.

MARKING NOTES:
N/A

PACKAGE MARKING:
STANDARD

UNLESS OTHERWISE SPECIFIED DIMENSIONS ARE IN INCHES [MILLIMETERS] DD NOT SCALE.	REV. 2	CN 31993-CPD	7	TOLERANCES UNLESS OTHERWISE SPECIFIED	SPECTRUM CONTROL INC.	ERIE, FAIRVIEW PENNSYLVANIA
CHANGE NOTICE	1	CN 214090	6	Fractions ±		
		CN 206911	5	Dec. .xx±	DR. MAYNARD	Description Low PASS EMI Filter
		CN 183679	4	Dec. .xxx±	Date 12-08-06	
				Angles ±0° 30°	Engr. J. Krous	9051-100-0000
				DLSP2	Sheet 1 of 1	

Quality Products From The Specialists In Electro-Magnetic Compatibility