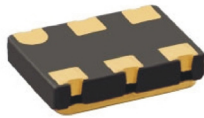


UVV Series

5x7 mm, 3.3 Volt, LVPECL/LVDS, VCXO



- Versatile VCXO to 800 MHz with good jitter (3 ps typical)
- Used in low jitter clock synthesizers and SONET applications

Ordering Information

00.0000
MHz

UVV 1 0 R 1 L N

Product Series _____

Temperature Range _____
 1: 0°C to +70°C 2: -40°C to +85°C
 6: -20°C to +70°C 8: 0°C to +50°C

Stability _____
 0: Nominal per APR selection

Output Type _____
 R: Complementary, Enable
 Z: Complementary, w/o Enable

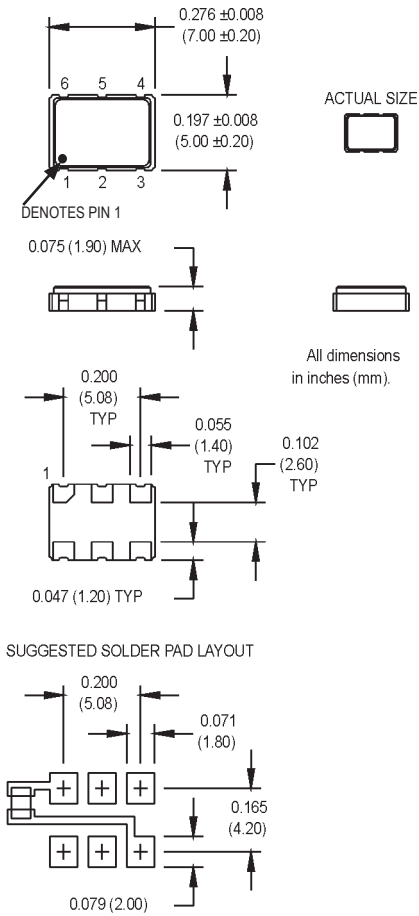
Absolute Pull Range _____
 1: ±50 ppm (±35 ppm typ. Stability)
 2: ±100 ppm (±20 ppm typ. Stability)
 5: ±80 ppm (±25 ppm typ. Stability)
 8: ±25 ppm (±50 ppm typ. Stability)

Symmetry/Output Logic Type _____
 L: 45/55% LVDS P: 45/55% PECL
 H: 40/60% LVDS Q: 40/60% PECL

Package/Lead Configurations _____
 N: Leadless Ceramic (6 pads)

Frequency (customer specified) _____

M3013Sxx - Contact factory for data sheet.



Pin Connections

PIN	FUNCTION
1	Control Voltage
2	Enable
3	Ground
4	Output1/ Q
5	Output2/ \bar{Q}
6	+Vdd

PARAMETER	Symbol	Min.	Typ.	Max.	Units	Condition	
Frequency Range	F	0.75		800	MHz		
Operating Temperature	TA	(See ordering information)					
Storage Temperature	TS	-55		+125	°C		
Frequency Stability	$\Delta F/F$	(See ordering information)					See Note 1
Aging							
1st Year		-3/-5		+3/+5	ppm	<52 MHz / ≥52 MHz	
Thereafter (per year)		-1/-2		+1/+2	ppm	<52 MHz / ≥52 MHz	
Pullability/APR		(See ordering information)					See Note 2
Control Voltage	Vc	0.3	1.65	3	V	Pin 1 Voltage	
Linearity			5	15	%	Positive Monotonic Slope	
Modulation Bandwidth	fm	10			kHz	-3 dB bandwidth	
Input Impedance	Zin	50k			Ohms		
Input Voltage	Vcc	3.135	3.3	3.456	V		
Input Current	Icc						
0.75 MHz to 24 MHz				70/30	mA	PECL/LVDS	
24 MHz to 96 MHz				100/60	mA	PECL/LVDS	
96 MHz to 800 MHz				110/60	mA	PECL/LVDS	
Output Type						PECL/LVDS	
Load		50 Ohms to Vcc -2 VDC 100 Ohms differential load					See Note 3 PECL waveform LVDS waveform
Symmetry (Duty Cycle)		(See ordering information)					Vcc -1.3 VDC (PECL) 0.5x (Vmax-Vmin) LVDS
(Per Symmetry Code)							
Output Skew				200	ps	PECL	
Differential Voltage	Vo	250	340	450	mV	LVDS	
Logic "1" Level	Voh	Vcc -1.02			V	PECL	
Logic "0" Level	Vol			Vcc -1.63	V	PECL	
Rise/Fall Time	Tr/Tf		.35 .50	.55 1.0	ns	@ 20/80% LVPECL @ 20/80% LVDS	
Enable/Disable Logic		80% Vcc min or N/C: output active 20% Vcc max: output disables to high-Z					Output Option R
Start up Time			5		ms		
Phase Jitter	ϕJ		3	5	ps RMS	Integrated 12 kHz - 20 MHz	
Phase Noise (Typical)		10 Hz	100 Hz	1 kHz	10 kHz	100 kHz	Offset from carrier
@ 19.44 MHz		-60	-90	-112	-140	-150	dBc/Hz
@ 155.52 MHz		-60	-90	-112	-123	-120	dBc/Hz
Mechanical Shock		Per MIL-STD-202, Method 213, Condition C					
Vibration		Per MIL-STD-202, Method 201 & 204					
Max Soldering Conditions		See solder profiles, Figure 1					
Hermeticity		Per MIL-STD-202, Method 112 (1 x 10 ⁻⁹ atm cc/s of helium)					
Solderability		Per MIL-STD-883, Method 2003					

- Stability given for deviation over temperature
- APR specification inclusive of initial tolerance, deviation over temperature, shock, vibration, supply voltage, and aging.
- PECL - See load circuit diagram #5. LVDS - See load circuit diagram #9.

MtronPTI reserves the right to make changes to the product(s) and service(s) described herein without notice. No liability is assumed as a result of their use or application.

Please see www.mtronpti.com for our complete offering and detailed datasheets. Contact us for your application specific requirements: MtronPTI 1-800-762-8800.

MtronPTI Lead Free Solder Profile



MtronPTI reserves the right to make changes to the product(s) and service(s) described herein without notice. No liability is assumed as a result of their use or application.

Please see www.mtronpti.com for our complete offering and detailed datasheets. Contact us for your application specific requirements: MtronPTI 1-800-762-8800.