



DESCRIPTION

The 60VS6 is our smallest 60 Amp filter. This multi-stage product combines both line-to-ground and line-to-line circuitry for effective suppression of both common and differential mode noise and transients.

APPLICATIONS

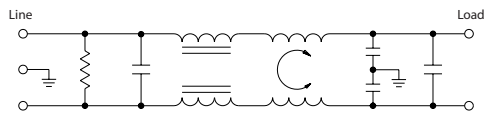
- Frequency Inverters
- High Current Industrial Equipment
- Motor Drives

ELECTRICAL

Max. leakage current @10% unsymmetrical mains line to ground:
 • 75 mA @ 120 VAC 60 Hz
 • 1.25 mA @ 250 VAC 50 Hz

Rated current: 60A
 Rated voltage (max.): 250 VAC
 Operating frequency: 50/60 Hz

ELECTRICAL SCHEMATIC



MINIMUM INSERTION LOSS IN DB:

Line to ground in 50 ohm circuit		Frequency - MHz							
Current Rating		.15	.5	1	2	5	10	20	30
60A		7	27	34	38	45	54	44	40

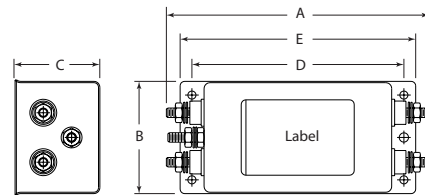
Line to line in 50 ohm circuit		Frequency - MHz							
Current Rating		.15	.5	1	2	5	10	20	30
60A		37	77	93	86	70	54	64	54

STANDARDS AND SPECIFICATIONS

- UL Recognized
- CSA Certified
- VDE Approved

PRODUCT DIMENSIONS & PART NUMBERS

60VS6



Typical Dimensions:

Terminals (5):	1/4 - 20
Torque:	16 ± 2 in. lb. max.
Mounting Holes (4):	.218 [5.54] dia.

CASE DIMENSIONS

	A	B	C	D	E
	(max.)	(max.)	(max.)	± .015 [.38]	(max.)
60VS6	7.2	3.08	2.28	5.63	6.28
	182.88	78.23	57.91	142.87	158.78