

DC feedthrough filters

FN 766X

- EN 133200 approval
 - 10 to 200A current ratings
 - 2.5kV pulse test capability
 - Class Y4 capacitors
-
- Nach EN 133200 geprüft
 - Nennströme von 10 bis 200A
 - Für 2,5kV-Pulsprüfungen geeignet
 - Kondensator der Klasse Y4
-
- Homologation EN 133200
 - De 10 à 200A
 - Possibilité de test d'impulsions 2,5kV
 - Condensateurs de classe Y4



Filter selection table

Choose the DC feedthrough filter FN 766x offering the required current rating and characteristics. Note that this family of filters offers a choice of two performance levels, indicated by the fourth numeral in the part number. Schaffner's numbering scheme provides a quick verification of selection. For example: FN 7661-32/M4 is a high performance DC feedthrough filter with a 32A current rating, fitted with M4 terminals.

Approvals

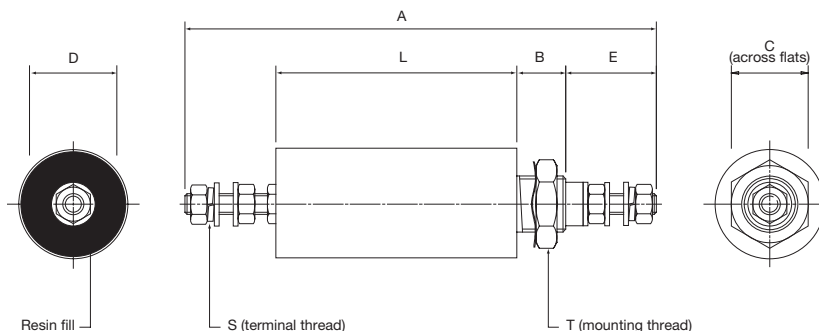


Part number	Current rating A @ 60°C*	C value 2 x nF	L value nH	DC res. mΩ
STANDARD PERFORMANCE				
FN 7660-10/M3	10	10	60	6
FN 7660-16/M4	16	10	70	4
FN 7660-32/M4	32	10	70	4
FN 7660-63/M6	63	100	70	3
FN 7660-100/M8	100	470	125	2
FN 7660-200/M10	200	470	125	1

Part number	Current rating A @ 60°C*	C value 2 x nF	L value nH	DC res. mΩ
HIGH PERFORMANCE				
FN 7661-10/M3	10	100	70	8
FN 7661-16/M4	16	100	70	5
FN 7661-32/M4	32	100	70	5
FN 7661-63/M6	63	470	125	3
FN 7661-100/M8	100	1000	125	2
FN 7661-200/M10	200	4700	125	2
FN 7661-200/M10A	200	4700	125	2
FN 7661-200/M10B	200	4700	125	2

*50°C for 200A filters

Mechanical data

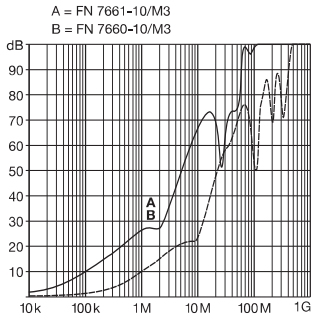


Additional specifications

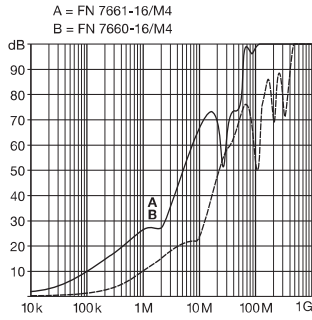
Rated voltage: 130VDC or 130VAC @ 50/60Hz
 Test voltage: 1700VDC for 2 seconds
 Temperature range: -40°C to +100°C

Capacitor class: Y4
 Insulation resistance: for capacitance < 0.33μF, R > 15000MΩ
 for capacitance > 0.33μF, R > 5000s
 Measured at: 100VDC after 60s, @ 20°C

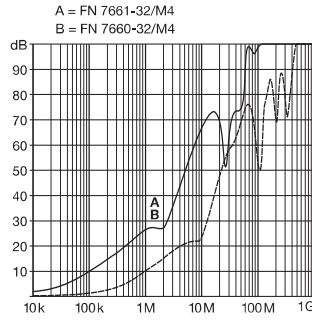
FN 766X insertion loss (typical, full load, 50Ω system)



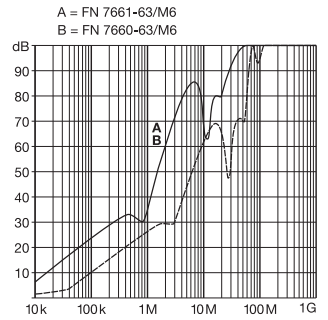
DC Filters 10 A



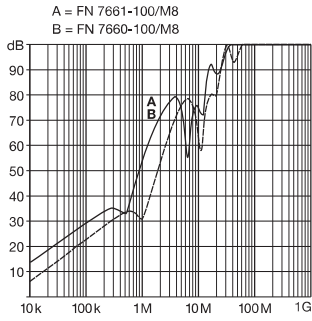
DC Filters 16 A



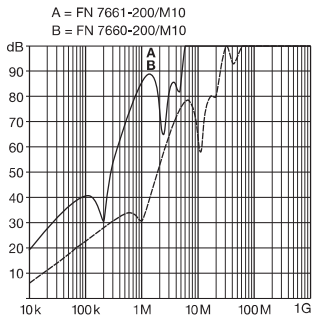
DC Filters 32 A



DC Filters 63 A



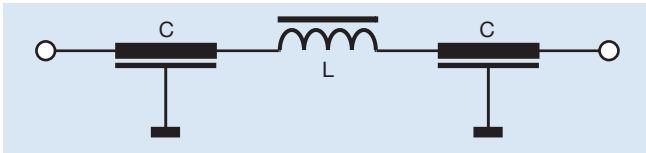
DC Filters 100 A



DC Filters 200 A

Electrical schematic

(see tables for component values)



Part number	Dimensions (mm)						Thread		Torque		Weight (g)
	Diameter (D) ±0.5mm	Length (L) ±1mm	A ±2mm	B ±1mm	C	E ±2mm	Mounting T	Terminal stud S	on T Nm	on S Nm	
STANDARD PERFORMANCE											
FN 7660-10/M3	20	49	90	12	17	16	M12 x 1	M3	3	0.5	48
FN 7660-16/M4	20	53	98	12	17	18	M12 x 1	M4	3	1.2	58
FN 7660-32/M4	20	53	98	12	17	18	M12 x 1	M4	3	1.2	58
FN 7660-63/M6	25	94	160	14	22	26	M16 x 1	M6	4	2.5	120
FN 7660-100/M8	32	104	184	16	27	32	M20 x 1	M8	7	5	280
FN 7660-200/M10	38	112	209	19	27	40	M24 x 1	M10	8	8	410
HIGH PERFORMANCE											
FN 7661-10/M3	20	66	107	12	17	16	M12 x 1	M3	3	0.5	55
FN 7661-16/M4	20	61	106	12	17	18	M12 x 1	M4	3	1.2	58
FN 7661-32/M4	20	61	106	12	17	18	M12 x 1	M4	3	1.2	58
FN 7661-63/M6	32	105	173	16	27	26	M20 x 1	M6	7	2.5	250
FN 7661-100/M8	32	120	200	16	27	32	M20 x 1	M8	7	5	320
FN 7661-200/M10	54	112	209	19	41	40	M27 x 1.5	M10	12	8	655
FN 7661-200/M10A	54	112	209	19	41	40	M30 x 1.5	M10	13	8	655
FN 7661-200/M10B	54	112	209	19	41	40	M32 x 1.5	M10	14	8	655