

**High Performance Power Line Filter for Medical Applications**

# HZ Series



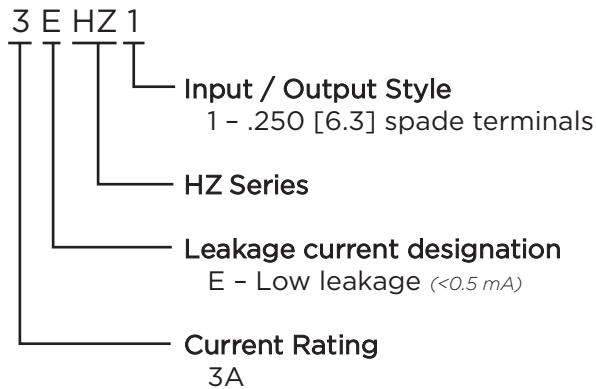
UL Recognized  
CSA Certified  
VDE Approved



## HZ Series

- Designed to provide good attenuation to RFI noise in the frequency range from 10kHz to 30MHz
- Size and cost-effective
- Low leakage current

## Ordering Information



## Available Part Number

3EHZ1	
-------	--

## Specifications

**Maximum leakage current each Line to Ground:**

@ 120 VAC 60 Hz:	2 $\mu$ A
@250 VAC 50 Hz:	5 $\mu$ A

**Hipot rating (one minute):**

Line to Ground:	2250 VDC
Line to Line:	1450 VDC

**Rated Voltage (max):** 250 VAC

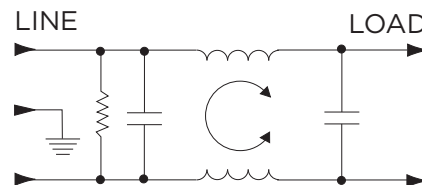
**Operating Frequency:** 50/60 Hz

**Rated Current:** 3A

**Operating Ambient Temperature Range (at rated current  $I_r$ ):** -10°C to +40°C

In an ambient temperature ( $T_a$ ) higher than +40°C the maximum operating current ( $I_o$ ) is calculated as follows:  $I_o = I_r \sqrt{(85-T_a)/45}$

## Electrical Schematic



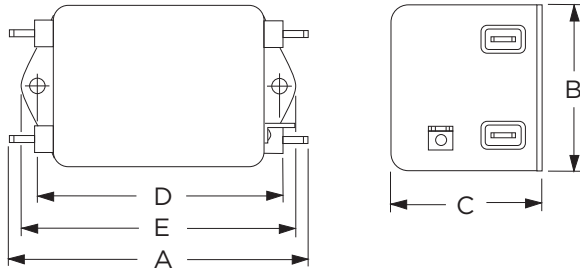
1

RFI Power Line Filters

**High Performance Power Line Filter for Medical Applications** *(continued)*

# HZ Series

## Case Styles



## Case Dimensions

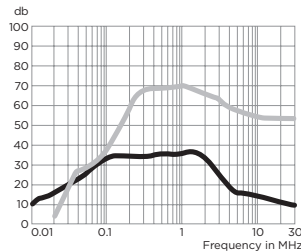
Part No.	A (max)	B (max)	C (max)	D $\pm .015$ $\pm .38$	E (max)
3EHZ1	<b>3.54</b> 89.9	<b>2.08</b> 52.8	<b>1.31</b> 33.3	<b>2.938</b> 74.63	<b>3.35</b> 85.1

## Performance Data

### Typical Insertion Loss

Measured in closed 50 Ohm system

**3EHZ1**



— Common Mode / Asymmetrical (L-G)  
— Differential Mode / Symmetrical (L-L)

### Minimum Insertion Loss

Common Mode / Asymmetrical (Line to Ground)

Part No.	Frequency – MHz						
	.01	.05	.15	.5	1	5	10 30
3EHZ1	10	24	34	34	35	15	10 5

Differential Mode / Symmetrical (Line to Line)

Part No.	Frequency – MHz						
	.01	.05	.15	.5	1	5	10 30
3EHZ1	10	25	54	70	70	65	55 55