

Stud-Mounted Fuses

One-Time

ALS

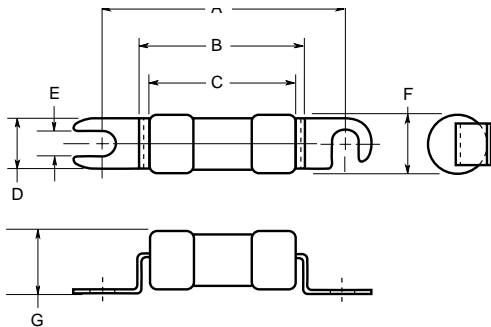


Catalog Symbol: ALS
 One-Time, Stud-Mounted
Ampere Rating: 100 to 600 Amperes
Voltage Rating: 125 Volts or less
Agency Approvals:
 UL Recognized, JFHR2, E56412

Electrical Ratings (Catalog Symbol and Amperes)

125 Volts		
ALS-100	ALS-250	ALS-450
ALS-175	ALS-300	ALS-500
ALS-200	ALS-350	ALS-550
ALS-225	ALS-400	ALS-600

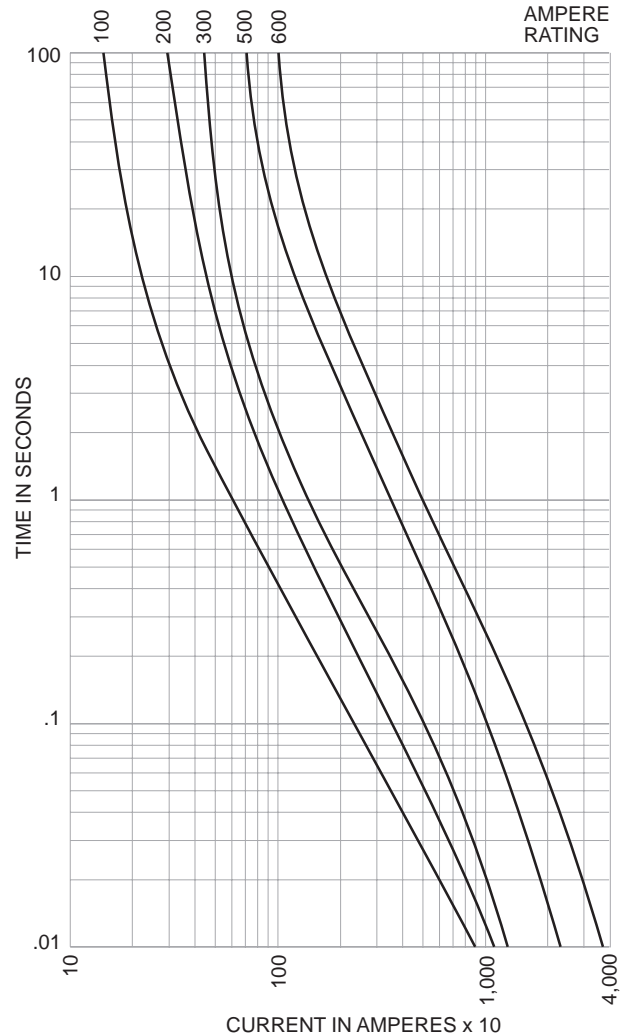
Dimensional Data



Dimensions (in./mm)

	A	B	C	D	E	F	G
ALS 100-175	3.5 (± 0.031) 88.9 (± 0.79)	—	2.41 (± 0.015) 61.1 (± 0.38)	.75 19.1	.312 7.92	1.06 26.85	1.13 (± 0.015) 28.6 (± 0.38)
ALS 200-500	3.75 (± 0.031) 95.3 (± 0.79)	2.7 (± 0.031) 68.6 (± 0.79)	2.25 (+ .00 - .031) 57.2 (+ .00 - .79)	.75 19.1	.375 9.53	1.06 26.85	1.13 (± 0.015) 28.6 (± 0.38)
ALS 550-600	4.25 (± 0.031) 107.95 (± 0.79)	2.38 (± 0.015) 60.5 (± 0.38)	—	1.25 31.75	.531 13.5	1.59 40.4	1.81 (± 0.015) 46.1 (± 0.38)

Time-Current Characteristics—Total Clear



CE logo denotes compliance with European Union Low Voltage Directive (50-1000 VAC, 75-1500 VDC). Refer to BIF document #8002 or contact Bussmann Application Engineering at 314-527-1270 for more information.

This bulletin is intended to clearly present comprehensive product data and provide technical information that will help the end user with design applications. Bussmann reserves the right, without notice, to change design or construction of any products and to discontinue or limit distribution of any products. Bussmann also reserves the right to change or update, without notice, any technical information contained in this bulletin. Once a product has been selected, it should be tested by the user in all possible applications.



rev. 9/15/97

Form No. ALS
 Page 1 of 1
 BIF Doc #1037