

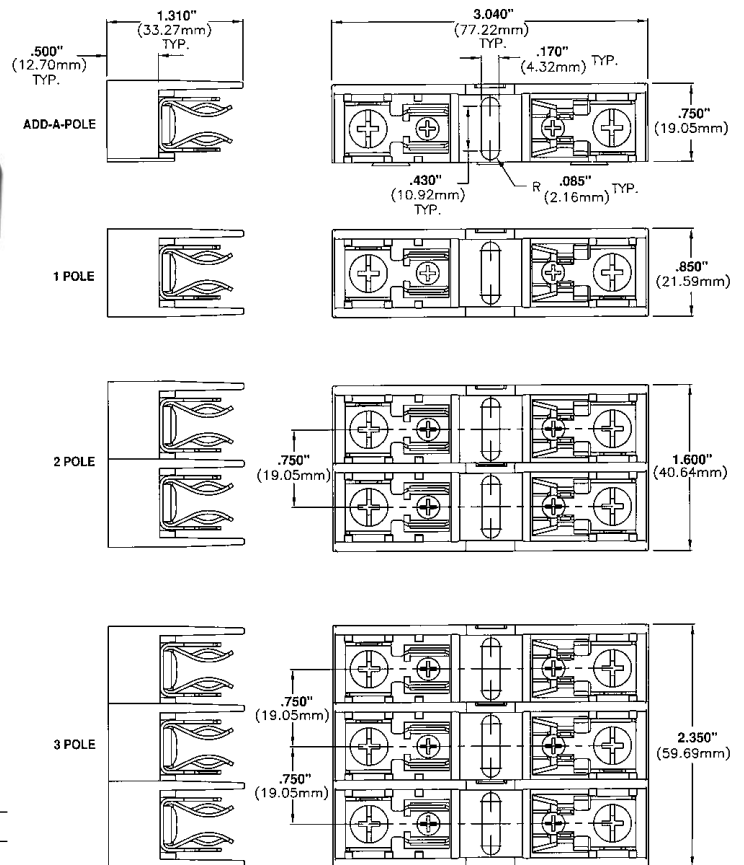
Class CC Fuseblocks

600 Volt, 30 Amps

BCA Series



Dimensional Data All dimensions ±.015" (.38mm)



Catalog Symbol: BCA Series

Class CC Fuseblocks

For use with Class CC Fuses (Bussmann LP-CC, KTK-R, and FRQ-R)

Ampere Rating: 1/10 to 30

Voltage Rating: 600V

Withstand Rating: 200,000A, RMS Sym.

Agency Information:

UL Listed, UL 512, Guide IZLT, File E14853

CSA Certified, C22.2 No. 39, Class 6225-01, File 47235

UL Flammability: 94 VO

Materials: Base - Thermoplastic

Clips - Bright tin-plated bronze

Catalog Data

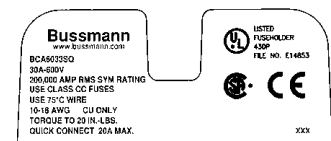
		Terminal Type		
Amps	Poles	Screw with Quick Connect*	Pressure Plate with Quick Connect*	
		Adder	BCA603ASQ	BCA603APO
1/10	1	BCA6031SQ	BCA6031PQ	
to	2	BCA6032SQ	BCA6032PQ	
30	3	BCA6033SQ	BCA6033PQ	

Wire Range
CU Only
#10-#18



*QUICK CONNECT RATED FOR 20A MAXIMUM.

FUSEBLOCK MARKING (EXAMPLE SHOWN)



Fuse blocks feature a unique adder block which can be snapped onto 1-, 2-, or 3-pole blocks to form multi-pole segmented blocks of as many poles as desired.

CE logo denotes compliance with European Union Low Voltage Directive (50-1000Vac, 75-1500Vdc). Refer to Data Sheet: 8002 or contact Bussmann Application Engineering at 636-527-1270 for more information.

The only controlled copy of this Data Sheet is the electronic read-only version located on the Bussmann Network Drive. All other copies of this document are by definition uncontrolled. This bulletin is intended to clearly present comprehensive product data and provide technical information that will help the end user with design applications. Bussmann reserves the right, without notice, to change design or construction of any products and to discontinue or limit distribution of any products. Bussmann also reserves the right to change or update, without notice, any technical information contained in this bulletin. Once a product has been selected, it should be tested by the user in all possible applications.

Supplementary Fuseblocks

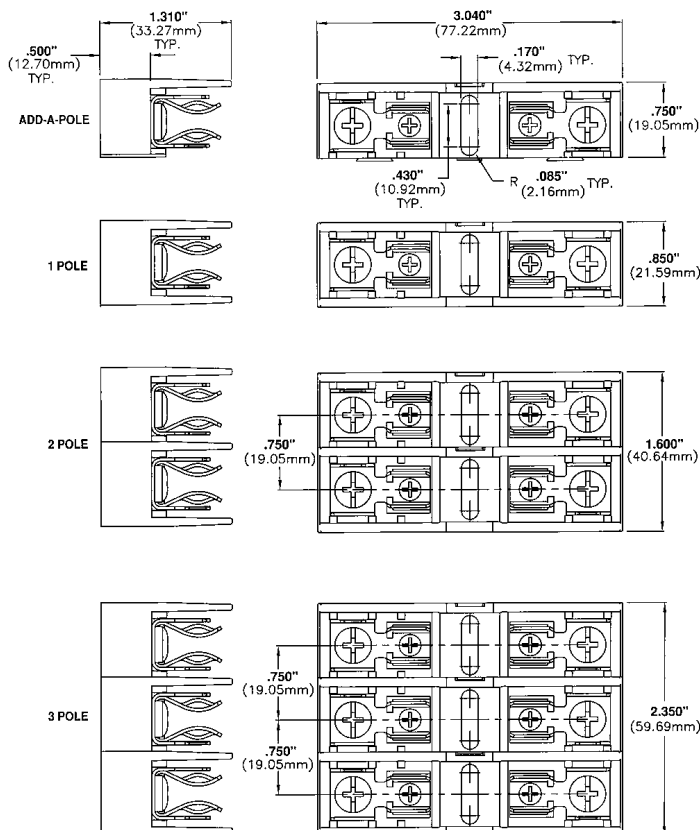
Type M, For $1\frac{3}{32}$ " x $1\frac{1}{2}$ " Fuses

600 Volt, 30 Amps

BMA Series



Dimensional Data All dimensions ±.015" (.38mm)



Catalog Symbol: BMA Series
Type M Supplementary Fuseblocks

For use with any $1\frac{3}{32}$ " x $1\frac{1}{2}$ " Fuses
 (Bussmann KTK, FNQ, FNM, BAF, BAN and AGU)

Ampere Rating: $\frac{1}{10}$ to 30A

Voltage Rating: 600V

Withstand Rating: 200,000 RMS Sym. or interrupting rating of the fuse used, whichever is lower.

Agency Information:

UL Recognized, UL 512, Guide IZLT2, File E14853
 CSA Certified, C22.2 No. 39, Class 6225-01, File 47235

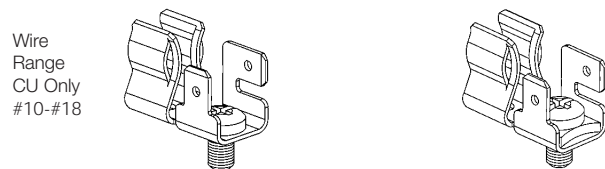
UL Flammability: 94V0

Material: Thermoplastic

Catalog Data

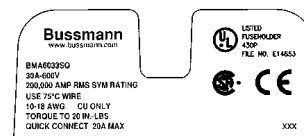
Amps	Poles	Terminal Type	
		Screw with Quick Connect*	Pressure Plate with Quick Connect*
	Adder	BMA603ASQ	BMA603APO
$\frac{1}{10}$	1	BMA6031SQ	BMA6031PQ
to	2	BMA6032SQ	BMA6032PQ
30	3	BMA6033SQ	BMA6033PQ

*QUICK CONNECT RATED FOR 20A MAXIMUM.



Wire Range
 CU Only
 #10-#18

FUSEBLOCK MARKING (EXAMPLE SHOWN)



Fuse blocks feature a unique adder block which can be snapped onto 1-, 2-, or 3-pole blocks to form multi-pole segmented blocks of as many poles as desired.

CE CE logo denotes compliance with European Union Low Voltage Directive (50-1000Vac, 75-1500Vdc). Refer to Data Sheet: 8002 or contact Bussmann Application Engineering at 636-527-1270 for more information.

The only controlled copy of this Data Sheet is the electronic read-only version located on the Bussmann Network Drive. All other copies of this document are by definition uncontrolled. This bulletin is intended to clearly present comprehensive product data and provide technical information that will help the end user with design applications. Bussmann reserves the right, without notice, to change design or construction of any products and to discontinue or limit distribution of any products. Bussmann also reserves the right to change or update, without notice, any technical information contained in this bulletin. Once a product has been selected, it should be tested by the user in all possible applications.