

FUSE BLOCK

DATE: 4-13-99 NO. 3835 REV I

J
56-

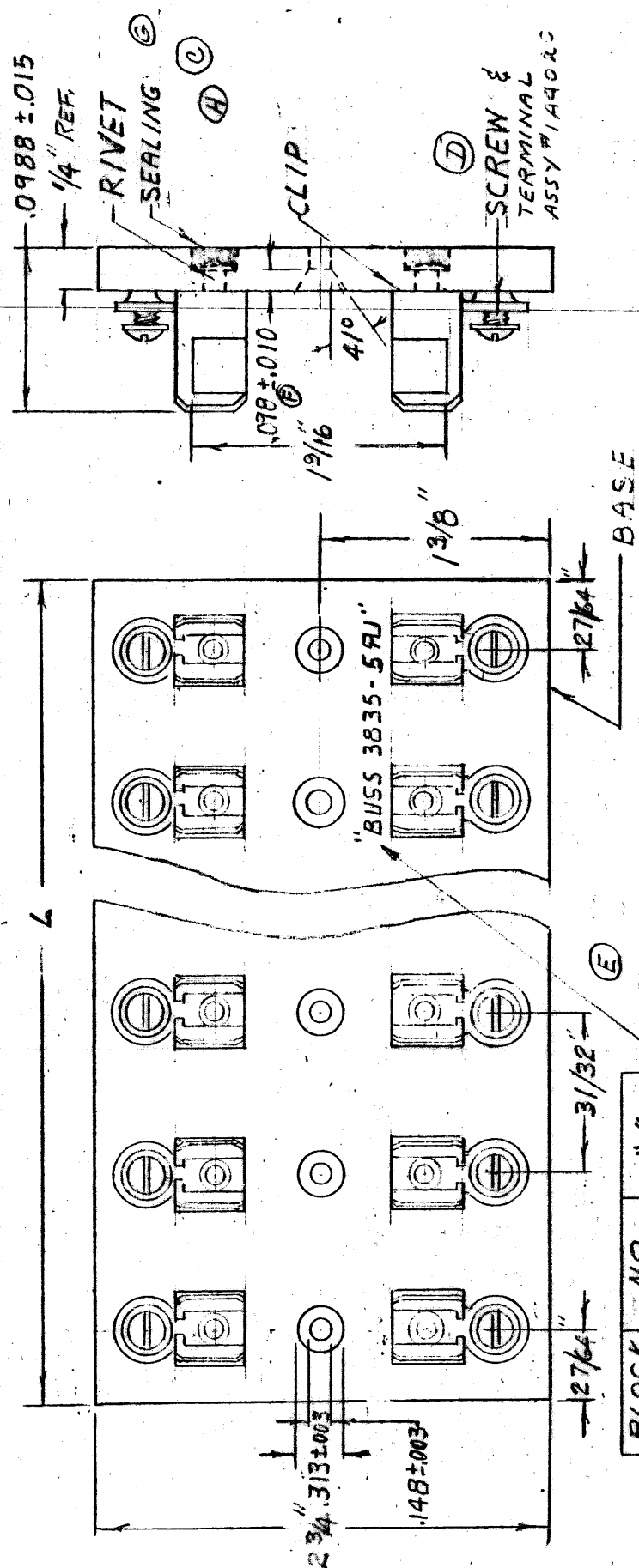
DRAWN BY: *BWD*
 ENG. OK: *WMM*
 MFG. OK: *AMP*
 SALES OK: *ML*

Bussmann Division
 Cooper Industries
 St. Louis, MO 63178

SUPERSEDES NO. 3835 H 3-1-99 DATED

LETTERS IN CIRCLE INDICATE CHANGE FROM PRECEDING PRINT.

N99063



NOTE: BLOCK MARKING,
 STAMP EACH BLOCK
 "BUSS 3835-XX RJ"

USE WHITE INK
 LOCATION OPTIONAL
 THIS SIDE ONLY.
 RJ LOGO

BLOCK NO.	NO. POLES	"L"
3835-1	1	27/32
3835-2	2	13/16
3835-3	3	2 2/32
3835-4	4	3 3/4
3835-5	5	4 23/32
3835-6	6	5 1/16
3835-7	7	6 21/32
3835-8	8	7 5/8
3835-9	9	8 19/32
3835-10	10	9 9/16
3835-12	12	11 1/2

SUBTOTAL	
5507	
TOTAL	

±1/64" TOLERANCE ON ALL DIMENSIONS NOT OTHERWISE MARKED

I