

# FUSE BLOCK

DATE: 4-13-99 NO. 3835 REV I

J  
56-

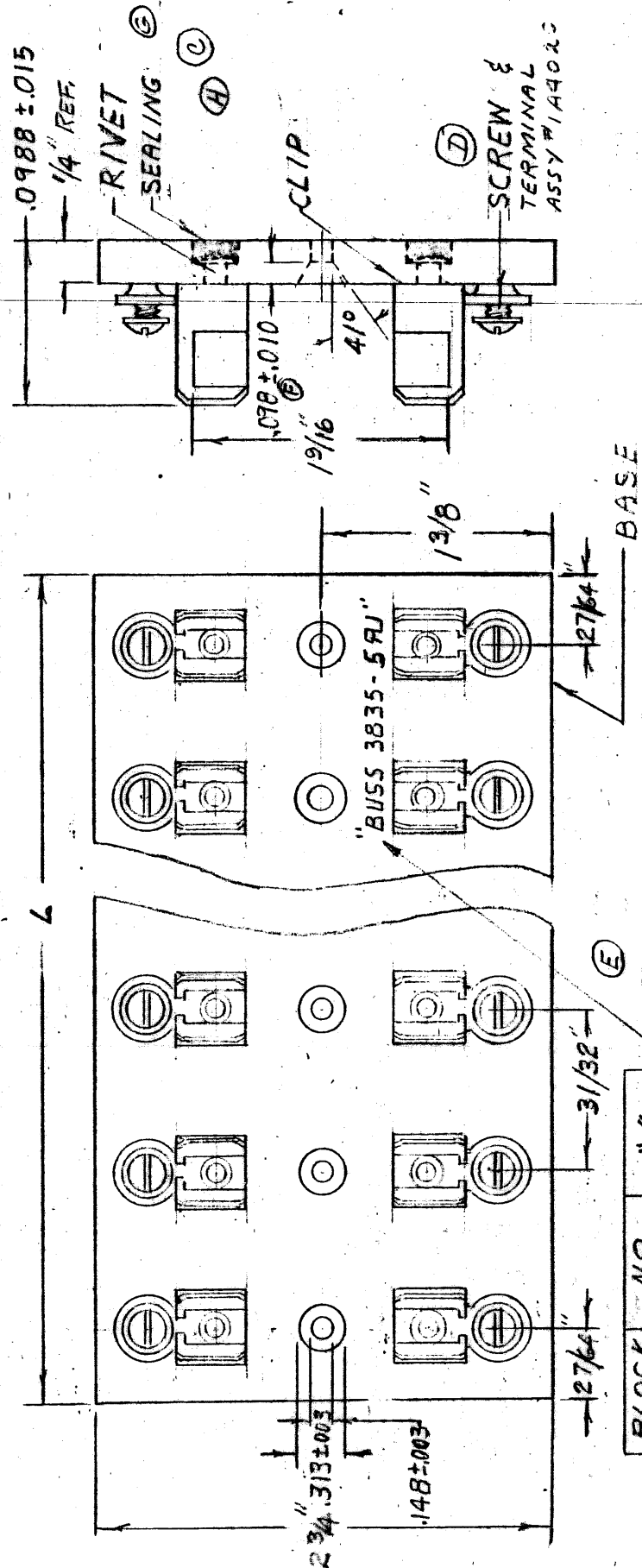
DRAWN BY: *BJD*  
 ENG. OK: *WMM*  
 MFG. OK: *AMP*  
 SALES OK: *ML*

Bussmann Division  
 Cooper Industries  
 St. Louis, MO 63178

SUPERSEDES NO. 3835 H 3-1-99 DATED

LETTERS IN CIRCLE INDICATE CHANGE FROM PRECEDING PRINT.

N99063



NOTE: BLOCK MARKING,  
 STAMP EACH BLOCK  
 "BUSS 3835-XX RJ"

USE WHITE INK  
 LOCATION OPTIONAL  
 THIS SIDE ONLY.  
 RJ LOGO

BLOCK NO.	NO. POLES	"L"
3835-1	1	$27/32$
3835-2	2	$13/16$
3835-3	3	$2 2/32$
3835-4	4	$3 3/4$
3835-5	5	$4 23/32$
3835-6	6	$5 1/16$
3835-7	7	$6 2/32$
3835-8	8	$7 5/8$
3835-9	9	$8 19/32$
3835-10	10	$9 9/16$
3835-12	12	$11 1/2$

SUBTOTAL	
5507 0/0	
TOTAL	

± 1/64" TOLERANCE ON ALL DIMENSIONS NOT OTHERWISE MARKED

I