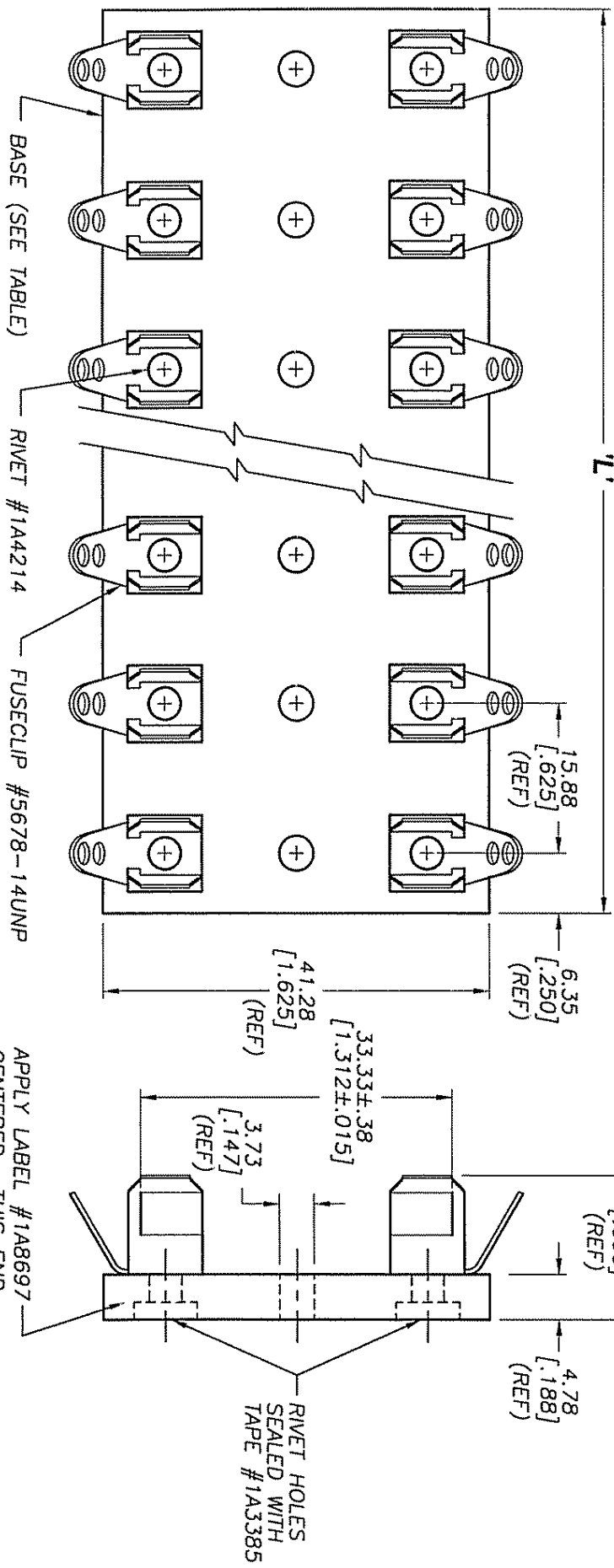


Ⓚ REVISED & REDRAWN

PAGE 1 OF 2 J04084

| | | | | |
|----|---|---|---------|----------------------------|
| 56 | J | INDICATES CRITICAL DIMENSION OR FEATURE | SCALE | UNLESS OTHERWISE SPECIFIED |
| | | | 1 1/2 X | TOLERANCES TO BE: |
| | | | | METRIC ±.13mm |
| | | | | INCHES ±.005" |
| | | | | ANGULAR ±.2° |
| | | | | THIRD ANGLE PROJECTION |
| | | | | S/F NO. 56476 |



PACKAGING SPECIFICATION #1P1063

| PART NO. | NO. OF POLES | BASE P/N | 'L' LENGTH (REF) |
|----------|--------------|----------|------------------|
| 3823-1 | 1 | 6623-1 | 12.70 [5.00] |
| 3823-2 | 2 | 6623-2 | 28.58 [1.125] |
| 3823-3 | 3 | 6623-3 | 44.45 [1.750] |
| 3823-4 | 4 | 6623-4 | 60.33 [2.375] |
| 3823-5 | 5 | 6623-5 | 76.20 [3.000] |
| 3823-6 | 6 | 6623-6 | 92.08 [3.625] |

| PART NO. | NO. OF POLES | BASE P/N | 'L' LENGTH (REF) |
|----------|--------------|----------|------------------|
| 3823-7 | 7 | 6623-7 | 107.95 [4.250] |
| 3823-8 | 8 | 6623-8 | 123.83 [4.875] |
| 3823-9 | 9 | 6623-9 | 139.70 [5.500] |
| 3823-10 | 10 | 6623-10 | 155.58 [6.125] |
| 3823-12 | 12 | 6623-12 | 187.33 [7.375] |