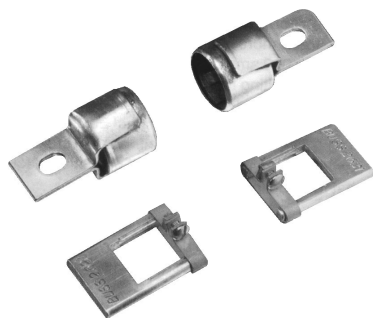


# Class H, J, K, & R Fuse Reducers

# REDUCERS



**Catalog Symbol:** CLASS H, J, K, & R  
**Fuse Reducers**  
**UL Listed**

(GUIDE # IZZR, FILE #E12853)

**CSA Certified**

(CLASS 6225-01, FILE #47235)

## Fuse Reducers for Class J Dimension Fuses- LPJ, JKS.

Fuse Size	Desired Size	Catalog No. (Pair) Reducer No.	*Carton Weight (Lbs.)
30A	60A	‡J-63	0.38
30A	100A	‡J-13	1.73
60A	100A	‡J-16	1.85
60A	200A	‡J-26	2.55
100A	‡200A	‡J-21	1.36
100A	‡400A	‡J-41	4.90
200A	‡400A	‡J-42	2.75
200A	600A	‡J-62	1.80
400A	‡600A	‡J-64	3.55

‡ These products do not have CSA or UL certification

\* Carton quantity — 10 pair. † Not for Bolt-on Applications.

## Fuse Reducers for Class R Dimension Fuses FRN-R, LPN-RK — FRS-R, LPS-RK.

Fuse Size	Desired Size	Catalog No. (Pairs)	
		250V	600V
30A	60A	No. 263-R	No. 663-R
30A	100A	No. 213-R	No. 216-R
60A	100A	No. 216-R	No. 616-R
60A	200A	No. 226-R	No. 626-R
100A		‡‡ No. 2621-R***	
100A		‡‡ No. 2641-R	
200A	400A	‡‡ No. 242-R	‡‡ No. 642-R
100A		‡‡ No. 2661-R	
200A	600A	‡‡ No. 2662-R	
400A		**No. 2664-R	

\*\*Single reducer only (pair not required)

\*\*\*Reducer No.2621-R does not apply to LPN-RK-70SP to LPN-RK-100SP Fuses.

‡‡ These products do not have CSA certification

Note: Carton quantity - 10 pair.

- Fuse reducers install in fuse clips to permit the installation of smaller size fuses than those for which the clips are designed
- Reducers fit into most panels or switches including the dead-front type.
- Strong contact is maintained both mechanically and electrically.
- There are no reducers to go from 250V to 600V or 600V to 250V.
- There are no reducers for switching from one Class to another.
- There are no reducers for Class T fuses.
- By design Class L fuses do not require reducers.

## Fuse Reducers for Class H & K Dimension Fuses NON, REN — NOS, RES

Fuse Size	Desired Size	Catalog No. (Pairs)		600V Reducer No.	*Carton Weight (Lbs.)
		250V Reducer No.	*Carton Weight (Lbs.)		
30A	60A	No. 263	0.38	No. 663	1.00
30A	100A	No. 213	1.73	No. 216	1.73
60A	100A	No. 216	1.73	No. 616	1.85
60A	200A	No. 226	3.00	No. 626	3.33
100A	200A	No. 2621	1.63	No. 2621	1.63
100A	400A	‡‡No. 2641	4.90	‡‡No. 2641	4.90
200A	400A	No. 2642	3.50	No. 2642	3.50
100A	600A	‡‡No. 2661	8.70	‡‡No. 2661	8.70
200A	600A	‡‡No. 2662	6.85	‡‡No. 2662	6.85
400A	600A	‡‡No. 2664	4.45	‡‡No. 2664	4.45

‡‡ These products do not have CSA certification

\* Carton quantity — 10 pair.

The only controlled copy of this Data Sheet is the electronic read-only version located on the Bussmann Network Drive. All other copies of this Data Sheet are by definition uncontrolled. This bulletin is intended to clearly present comprehensive product data and provide technical information that will help the end user with design applications. Bussmann reserves the right, without notice, to change design or construction of any products and to discontinue or limit distribution of any products. Bussmann also reserves the right to change or update, without notice, any technical information contained in this bulletin. Once a product has been selected, it should be tested by the user in all possible applications.