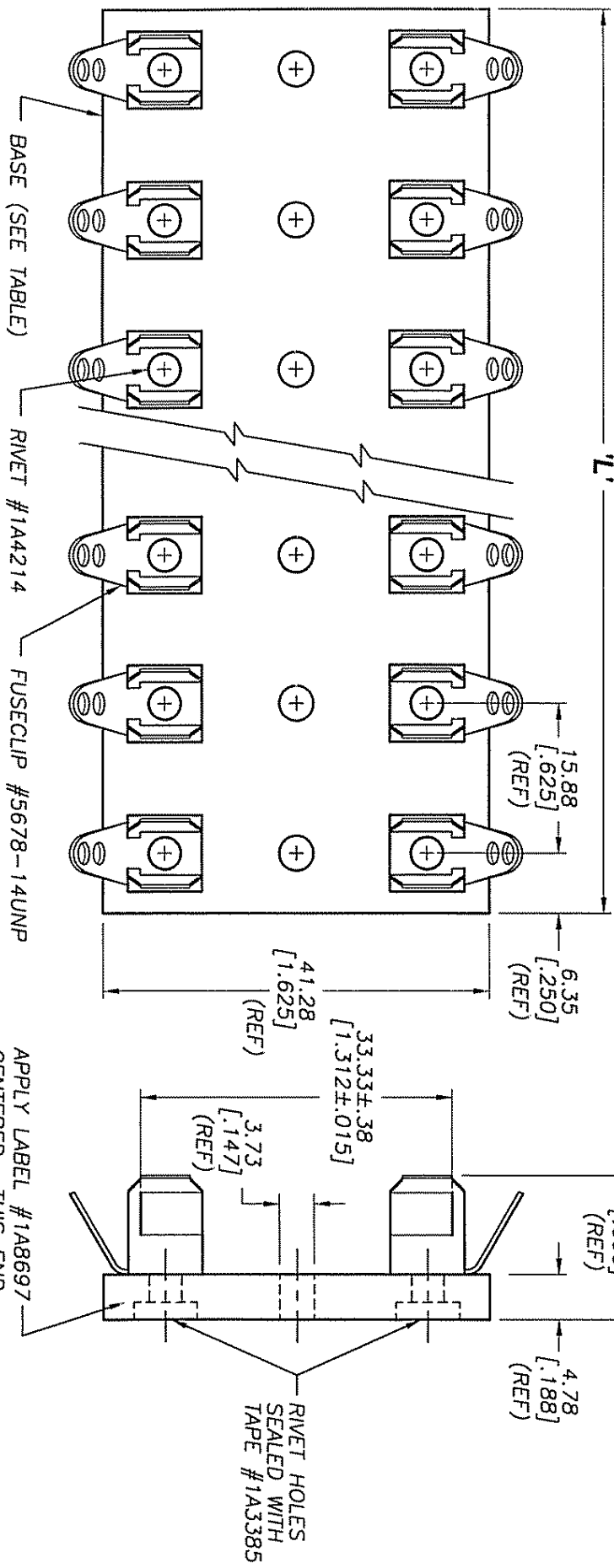


Ⓚ REVISED & REDRAWN

PAGE 1 OF 2 J04084

56	J	INDICATES CRITICAL DIMENSION OR FEATURE	SCALE	UNLESS OTHERWISE SPECIFIED	56476
			1 1/2 X	TOLERANCES TO BE:	S/F NO.
				METRIC ±.13mm	56476
				INCHES ±.005"	
				ANGULAR ±.2°	
				THIRD ANGLE PROJECTION	



PACKAGING SPECIFICATION #1P1063

PART NO.	NO. OF POLES	BASE P/N	'L' LENGTH (REF)
3823-1	1	6623-1	12.70 [5.00]
3823-2	2	6623-2	28.58 [1.125]
3823-3	3	6623-3	44.45 [1.750]
3823-4	4	6623-4	60.33 [2.375]
3823-5	5	6623-5	76.20 [3.000]
3823-6	6	6623-6	92.08 [3.625]

PART NO.	NO. OF POLES	BASE P/N	'L' LENGTH (REF)
3823-7	7	6623-7	107.95 [4.250]
3823-8	8	6623-8	123.83 [4.875]
3823-9	9	6623-9	139.70 [5.500]
3823-10	10	6623-10	155.58 [6.125]
3823-12	12	6623-12	187.33 [7.375]