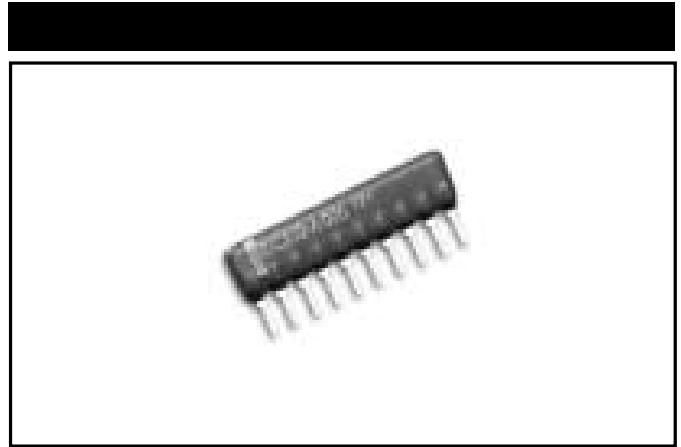


# MODEL CR SERIES

## Single-In-Line Conformal Coated Resistor/Capacitor Networks



### FEATURES

- 4 to 14 Leads
- Standard and custom circuits
- Space saving design

### ELECTRICAL (CAPACITOR)

|  |  |                |                |                        |
|--|--|----------------|----------------|------------------------|
| Rated Voltage                            | 25Vdc, 50Vdc, 100Vdc                                 |                |                |                        |
| Capacitance Range                        | 10pF to 470,000pF (Custom 2.2pF to 10pF max.)        |                |                |                        |
| Tolerance                                | J Tol.<br>±5%  | K Tol.<br>±10% | M Tol.<br>±20% | Z Tol.<br>+80% to -20% |
| Temperature Coefficient<br>(% of Change) | Refer to Dielectric Table                            |                |                |                        |
| Operating Temperature Range              | CG, SL & X7R: -55°C to +125°C<br>Y5V: -30°C to +85°C |                |                |                        |

4

### ELECTRICAL (RESISTOR)

|                                       |                         |               |                |
|---------------------------------------|-------------------------|---------------|----------------|
| Power Dissipation, Watts, at 70°C     | 1/8 to 1/4 per resistor |               |                |
| Operating Voltage, Maximum            | 100Vdc                  |               |                |
| Standard Resistance Range, Ohms       | 10 to 2.2 Meg           |               |                |
| Standard Resistance Tolerance         | G. Tol.<br>±2%          | J Tol.<br>±5% | K Tol.<br>±10% |
| Temperature Coefficient of Resistance | 100 to 300ppm/°C        |               |                |
| Operating Temperature Range           | -55°C to +125°C         |               |                |

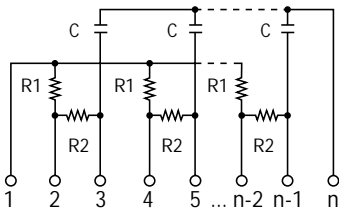
### DIELECTRIC TABLE

| Dielectric | Code | Characteristics             | Values          |
|------------|------|-----------------------------|-----------------|
| SL         | S    | +350/-1,000/°C              | 10pF to 3,300pF |
| X7R        | X    | ±15% (-55 to +125°C)        | 680pF to 47nF   |
| Y5V        | Y    | +22% to -82% (-30 to +85°C) | 10pF to 1,500pF |
| CG (NPO)   | CG   | ±30ppm/°C                   | 10pF to 1,500pF |

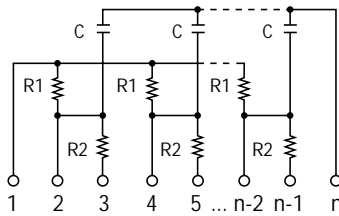
Specifications subject to change without notice.

**SCHEMATICS**

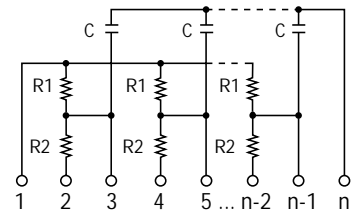
**-A Circuit**



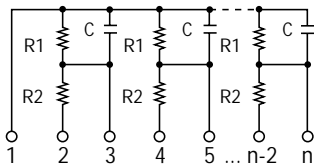
**-B Circuit**



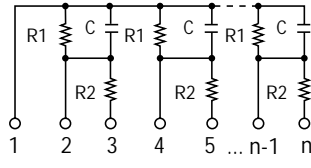
**-C Circuit**



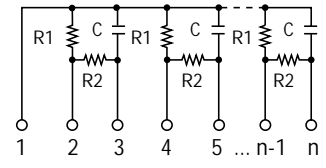
**-G Circuit**



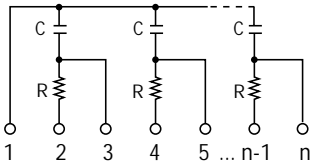
**-H Circuit**



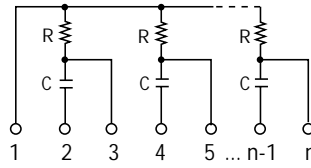
**-I Circuit**



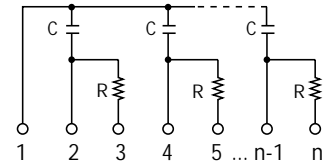
**-K Circuit**



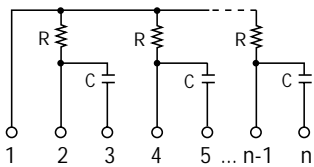
**-L Circuit**



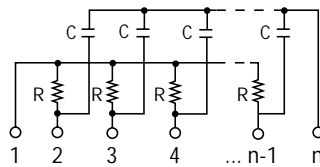
**-M Circuit**



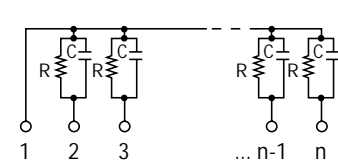
**-N Circuit**



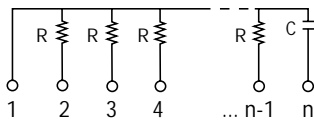
**-S Circuit**



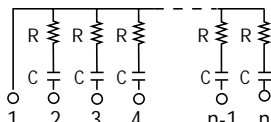
**-T Circuit**



**-U Circuit**

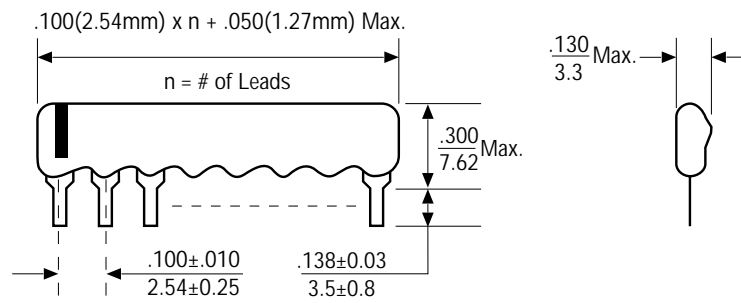


**-1 Circuit**

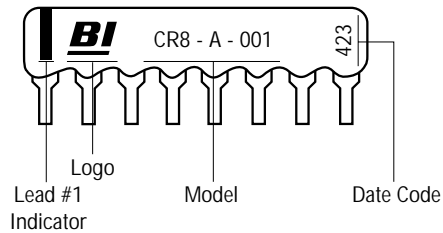


Note: Custom circuits are available. Consult factory.

## OUTLINE DIMENSIONS (Inch/mm)

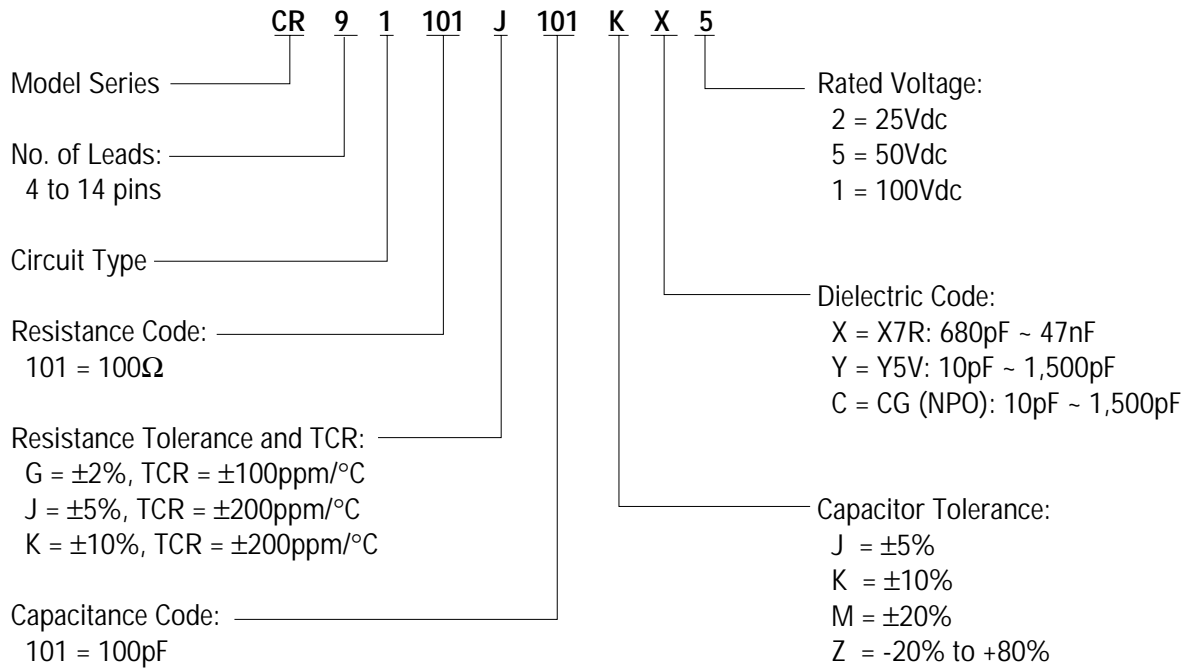


## TYPICAL PART MARKING



## ORDERING INFORMATION

### Circuit 1



### Custom Circuits A to U

