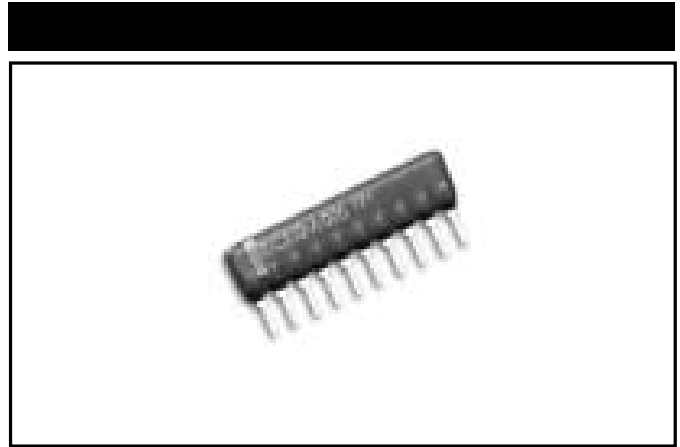


MODEL CR SERIES

Single-In-Line Conformal Coated Resistor/Capacitor Networks



FEATURES

- 4 to 14 Leads
- Standard and custom circuits
- Space saving design

ELECTRICAL (CAPACITOR)

Rated Voltage	25Vdc, 50Vdc, 100Vdc			
Capacitance Range	10pF to 470,000pF (Custom 2.2pF to 10pF max.)			
Tolerance	J Tol. ±5%	K Tol. ±10%	M Tol. ±20%	Z Tol. +80% to -20%
Temperature Coefficient (% of Change)	Refer to Dielectric Table			
Operating Temperature Range	CG, SL & X7R: -55°C to +125°C Y5V: -30°C to +85°C			

4

ELECTRICAL (RESISTOR)

Power Dissipation, Watts, at 70°C	1/8 to 1/4 per resistor		
Operating Voltage, Maximum	100Vdc		
Standard Resistance Range, Ohms	10 to 2.2 Meg		
Standard Resistance Tolerance	G. Tol. ±2%	J Tol. ±5%	K Tol. ±10%
Temperature Coefficient of Resistance	100 to 300ppm/°C		
Operating Temperature Range	-55°C to +125°C		

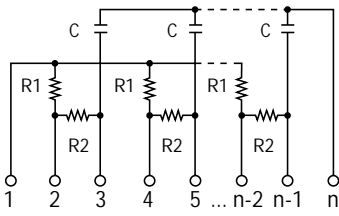
DIELECTRIC TABLE

Dielectric	Code	Characteristics	Values
SL	S	+350/-1,000/°C	10pF to 3,300pF
X7R	X	±15% (-55 to +125°C)	680pF to 47nF
Y5V	Y	+22% to -82% (-30 to +85°C)	10pF to 1,500pF
CG (NPO)	CG	±30ppm/°C	10pF to 1,500pF

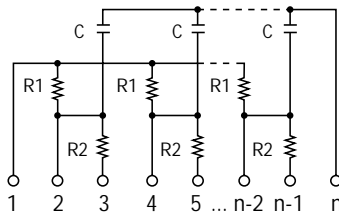
Specifications subject to change without notice.

SCHEMATICS

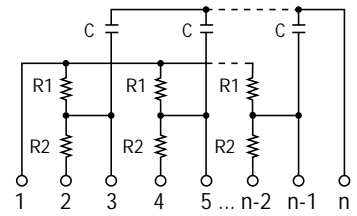
-A Circuit



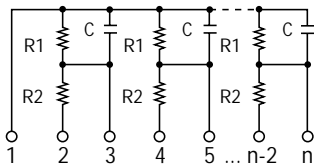
-B Circuit



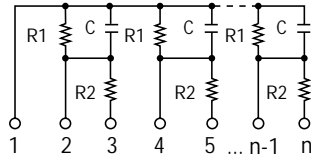
-C Circuit



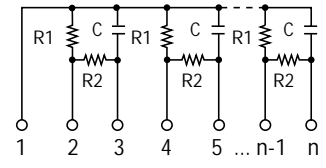
-G Circuit



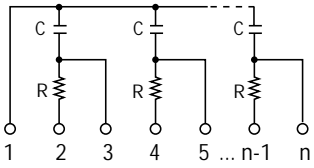
-H Circuit



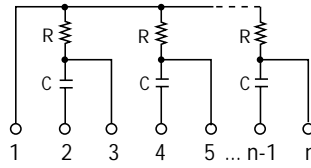
-I Circuit



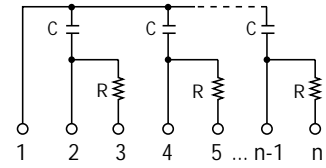
-K Circuit



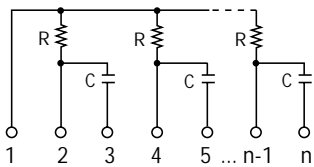
-L Circuit



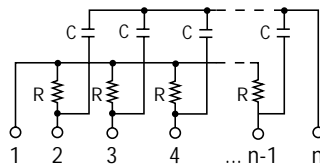
-M Circuit



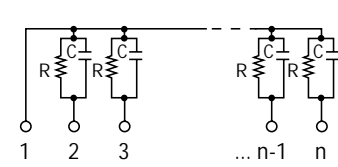
-N Circuit



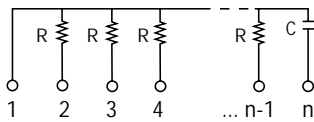
-S Circuit



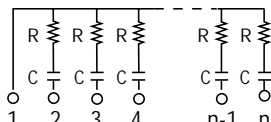
-T Circuit



-U Circuit

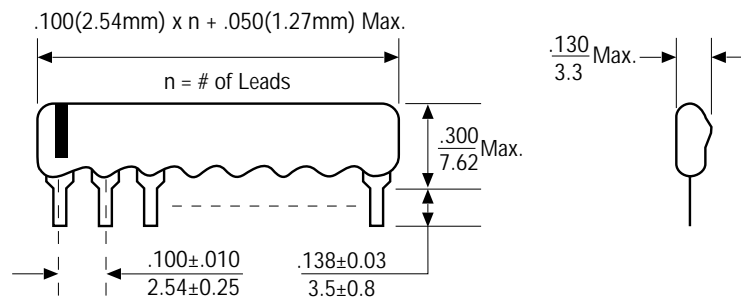


-1 Circuit

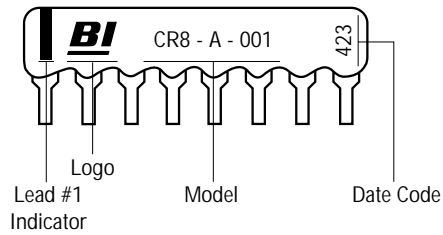


Note: Custom circuits are available. Consult factory.

OUTLINE DIMENSIONS (Inch/mm)

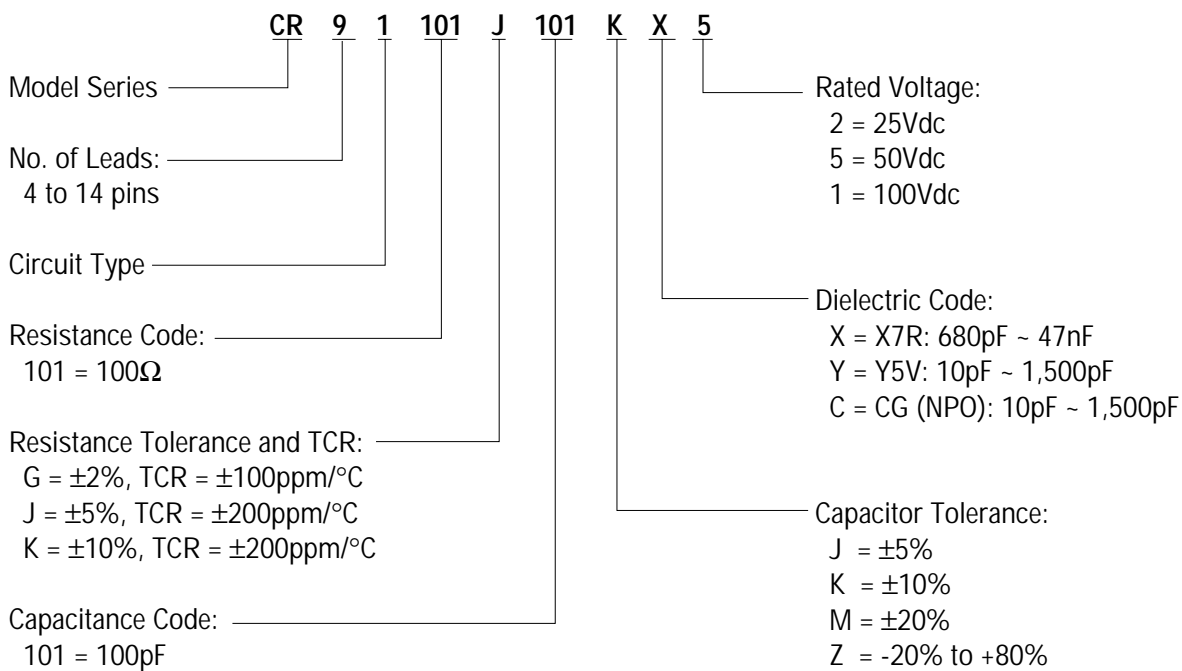


TYPICAL PART MARKING



ORDERING INFORMATION

Circuit 1



Custom Circuits A to U

