

Type SCC Dual IGBT Clamp-Snubber Modules

Style SCC

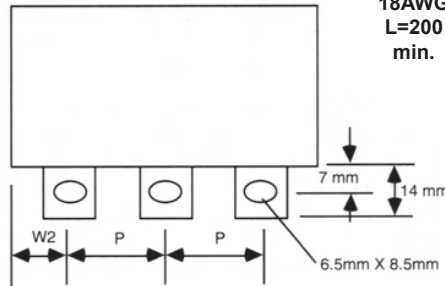
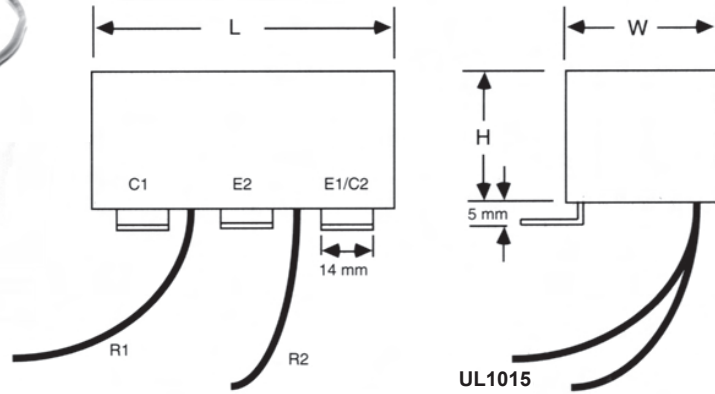


Applications

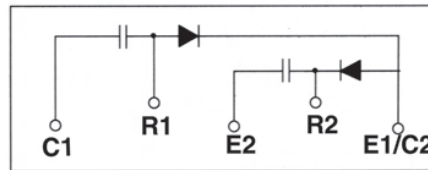
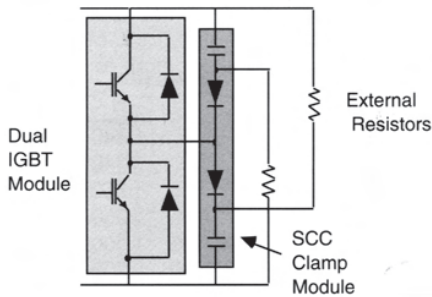
Style SCC is ideal for use in medium to high current applications where a dual IGBT module is used. This low loss snubber directly reduces turn-off voltage overshoots and is effective in reducing turn-on voltage transients.

Highlights

- ◆ Mount directly to the IGBT module
- ◆ Low inductance
- ◆ Low loss polypropylene dielectric
- ◆ High peak current
- ◆ Hyperfast diodes integrated into package
- ◆ Wire taps for connecting external resistors
- ◆ Flame resistant case and epoxy meet UL 94VO



Complies with the EU Directive 2002/95/EC requirement restricting the use of Lead (Pb), Mercury (Hg), Cadmium (Cd), Hexavalent chromium (Cr(VI)), PolyBrominated Biphenyls (PBB) and PolyBrominated Diphenyl Ethers (PBDE).



Ratings

| Catalog Part Number | Cap (μF) | Typical DUAL IGBT Ic/Vce | Diode Vrrm/If/trr(μs) | Ipk(A) | | Dimensions (in./mm) | | | | | | | | | |
|---------------------|----------|--------------------------|-----------------------|------------------|-----------------------|---------------------|-------------|-------------|--------------|-------------|-------|-------|-------|-------|----|
| | | | | Surge Tc = 25 °C | Repetitive Tc = 25 °C | W (in) (mm) | L (in) (mm) | H (in) (mm) | W2 (in) (mm) | P (in) (mm) | | | | | |
| SCC105K601H7-24-F | 1.00 | 100/600 | 600/30/.040 | 300 | 70 | 2.000 | 50.80 | 3.000 | 76.20 | 1.250 | 31.75 | 0.560 | 14.22 | 0.945 | 24 |
| SCC155K601H7-24-F | 1.50 | 200-300/600 | 600/30/.040 | 300 | 70 | 2.000 | 50.80 | 3.000 | 76.20 | 1.250 | 31.75 | 0.560 | 14.22 | 0.945 | 24 |
| SCC205K601H5-24-F | 2.00 | 400/600 | 600/50/.045 | 500 | 100 | 2.000 | 50.80 | 3.000 | 76.20 | 1.250 | 31.75 | 0.560 | 14.22 | 0.945 | 24 |
| SCC205K601H5-28-F | 2.00 | 400/600 | 600/50/.045 | 500 | 100 | 2.000 | 50.80 | 3.000 | 76.20 | 1.250 | 31.75 | 0.400 | 10.16 | 1.102 | 28 |
| SCC474K122H8-24-F | 0.47 | 100/1200 | 1200/30/.065 | 300 | 60 | 2.000 | 50.80 | 3.000 | 76.20 | 1.250 | 31.75 | 0.560 | 14.22 | 0.945 | 24 |
| SCC474K122H8-28-F | 0.47 | 100/1200 | 1200/30/.065 | 300 | 60 | 2.000 | 50.80 | 3.000 | 76.20 | 1.250 | 31.75 | 0.400 | 10.16 | 1.102 | 28 |
| SCC105K122H8-24-F | 1.00 | 150/1200 | 1200/30/.065 | 300 | 60 | 2.475 | 62.90 | 3.000 | 76.20 | 1.500 | 38.10 | 0.560 | 14.22 | 0.945 | 24 |
| SCC105K122H8-28-F | 1.00 | 150/1200 | 1200/30/.065 | 300 | 60 | 2.475 | 62.90 | 3.000 | 76.20 | 1.500 | 38.10 | 0.400 | 10.16 | 1.102 | 28 |
| SCC155K122H4-24-F | 1.50 | 200/1200 | 1200/50/.085 | 500 | 100 | 2.500 | 63.50 | 3.500 | 88.90 | 1.575 | 40.00 | 0.810 | 20.60 | 0.945 | 24 |
| SCC155K122H4-28-F | 1.50 | 200/1200 | 1200/50/.085 | 500 | 100 | 2.500 | 63.50 | 3.500 | 88.90 | 1.575 | 40.00 | 0.650 | 16.50 | 1.102 | 28 |
| SCC205K122H4-24-F | 2.00 | 300/1200 | 1200/50/.085 | 500 | 100 | 2.800 | 71.12 | 3.625 | 92.08 | 1.700 | 43.18 | 0.870 | 20.60 | 0.945 | 24 |
| SCC205K122H4-28-F | 2.00 | 300/1200 | 1200/50/.085 | 500 | 100 | 2.800 | 71.12 | 3.625 | 92.08 | 1.700 | 43.18 | 0.710 | 18.03 | 1.102 | 28 |