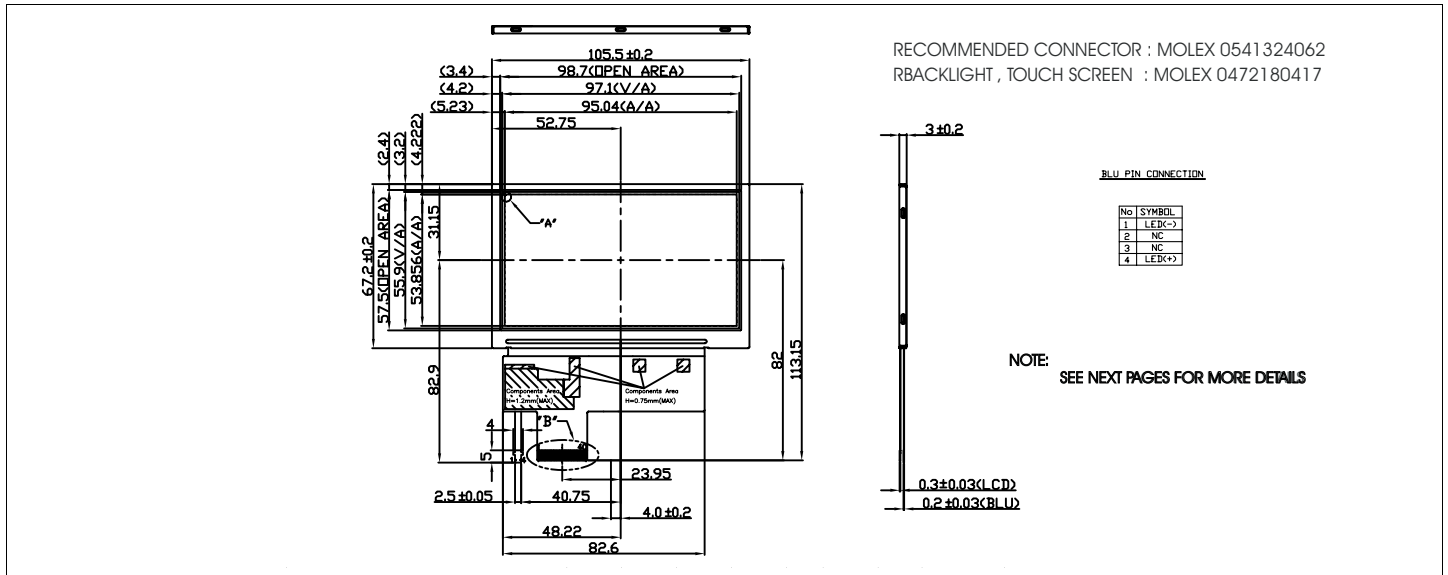


HDA430 / 430-H (High Brightness)

Dimensional Drawing

4.3", 480x272 , TFT, Transmissive Color, Landscape, White LED Backlight



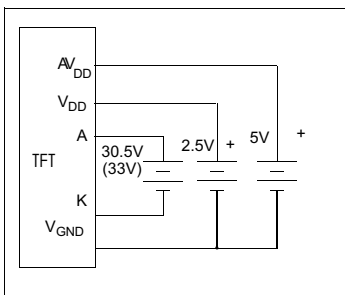
Features

- Viewing Angle(H/V).....130/110 degrees
- High Contrast.....450
- Fast Response Time.....50 msec
- Built-in DC-DC Converter
- Built-in Controller.....none
- Touch screenoptional
- High Brightness (HDA430-H).....650 cd/m

Physical Data

- Module Size.....105.5W x67.2H x 3.0T mm
- Viewing Area Size.....95.04W x 53.85H mm
- Dot Pitch.....0.198W x 0.198H mm
- Weight.....53g

Power Supply



Electrical Characteristics (VDD=2.5±0.125V 25°C)

| PARAMETER | SYM | CONDITION | MIN | TYP | MAX | UNIT |
|-----------------------|-----------------------------|--------------|--------------------|---------|--------------------|-------------------|
| OPERATING VOLTAGE | V _{DD} | - | 2.3 | 2.5 | 3.6 | V |
| OPERATING VOLTAGE | V _{AVDD} | - | 4.8 | 5.0 | 5.2 | V |
| INPUT HIGH VOLTAGE | V _{HI} | - | 0.7V _{DD} | - | V _{DD} | V |
| INPUT LOW VOLTAGE | V _{LI} | - | 0 | - | 0.3V _{CC} | V |
| OPERATING CURRENT | I _{DD} | - | - | 3.2 | 6 | mA |
| OPERATING CURRENT | A _{I_{DD}} | - | - | 17.4 | 27 | mA |
| LED OPERATING VOLTAGE | V _{LED} | HDA430/430-H | - | 30.5/33 | - | V |
| OPERATING CURRENT | I _{FLED} | HDA430/430-H | - | 18/20 | - | mA |
| POWER CONSUMPTION | P _D | HDA430/430-H | - | 645/758 | - | mW |
| BRIGHTNESS | L | HDA430/430-H | 320/500 | 370/650 | - | cd/m ² |

Pin Connections

| PIN NO. | SYMBOL | FUNCTION | |
|---------|--------|----------|----------------------|
| 1-2 | GND | I | Ground |
| 3-4 | VDD | I | + 2.5V Power Supply |
| 5 | R0 | H/L | Red Data Bit 0 |
| 6 | R1 | H/L | Red Data Bit 1 |
| 7 | R2 | H/L | Red Data Bit 2 |
| 8 | R3 | H/L | Red Data Bit 3 |
| 9 | R4 | H/L | Red Data Bit 4 |
| 10 | R5 | H/L | Red Data Bit 5 |
| 11 | R6 | H/L | Red Data Bit 6 |
| 12 | R7 | H/L | Red Data Bit 7 |
| 13 | G0 | H/L | Green Data Bit 0I |
| 14 | G1 | H/L | Green Data Bit 1I |
| 15 | G2 | H/L | Green Data Bit 2I |
| 16 | G3 | H/L | Green Data Bit 3I |
| 17 | G4 | H/L | Green Data Bit 4I |
| 18 | G5 | H/L | Green Data Bit 5I |
| 19 | G6 | H/L | Green Data Bit 6I |
| 20 | G7 | H/L | Green Data Bit 7I |
| 21 | B0 | H/L | Blue Data Bit 0I |
| 22 | B1 | H/L | Blue Data Bit 1I |
| 23 | B2 | H/L | Blue Data Bit 2I |
| 24 | B3 | H/L | Blue Data Bit 3I |
| 25 | B4 | H/L | Blue Data Bit 4I |
| 26 | B5 | H/L | Blue Data Bit 5I |
| 27 | B6 | H/L | Blue Data Bit 6I |
| 28 | B7 | H/L | Blue Data Bit 7I |
| 29 | GND | I | Ground |
| 30 | PCLK | H/L | Data Clock |
| 31 | DISP | H/L | Display ON/OFF (H/L) |
| 32 | HSYNC | H | Horizontal Sync |
| 33 | VSYNC | H | Vertical Sync |
| 34 | NC | - | No Connection |
| 35-36 | AVDD | I | +5V Power Supply |
| 37 | NC | - | No Connection |
| 38 | NC | - | No Connection |
| 39 | NC | - | No Connection |
| 40 | NC | - | No Connection |

Absolute Maximum Ratings

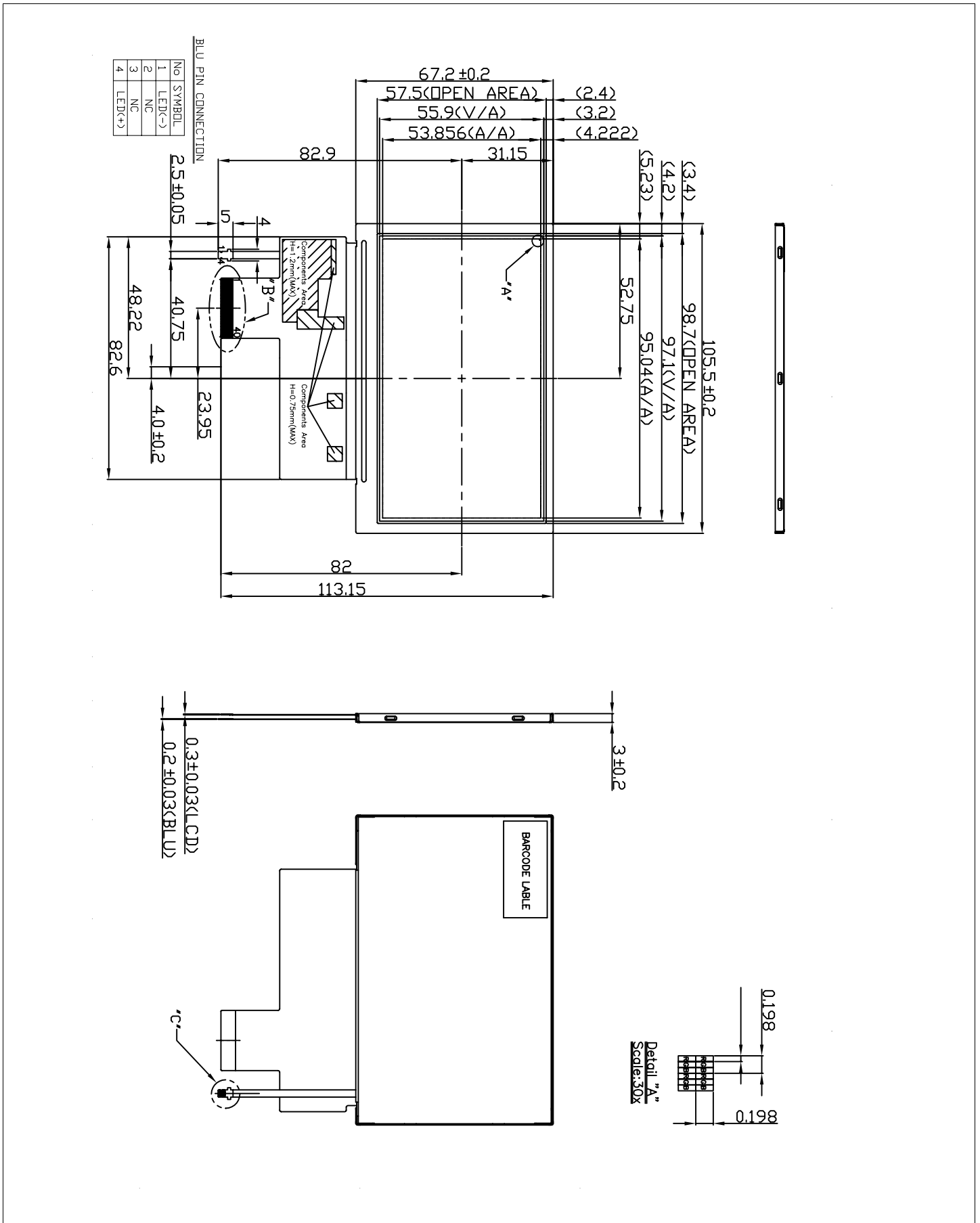
| PARAMETER | SYMBOL | MIN | MAX | UNIT |
|-------------------------|-------------------|------|----------------------|------|
| SUPPLY VOLTAGE | V _{DD} | 0 | 6.0 | V |
| SUPPLY VOLTAGE | V _{AVDD} | 0 | 6.0 | V |
| BACKLIGHT CURRENT (LED) | I _{LED} | - | 25 | mA |
| INPUT VOLTAGE | V _{IN} | -0.3 | V _{DD} +0.3 | V |
| OPERATING TEMPERATURE | T _{OP} | -20 | 70 | °C |
| STORAGE TEMPERATURE | T _{STG} | -30 | 80 | °C |



HDA430 / HDA430-H

Dimensional Drawing

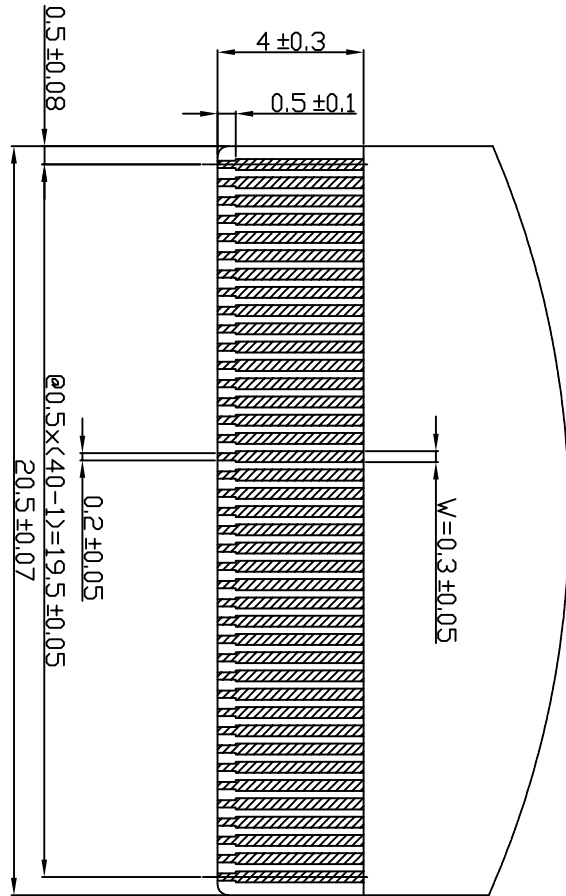
4.3", 480x272, TFT, Transmissive Color, Landscape, White LED Backlight



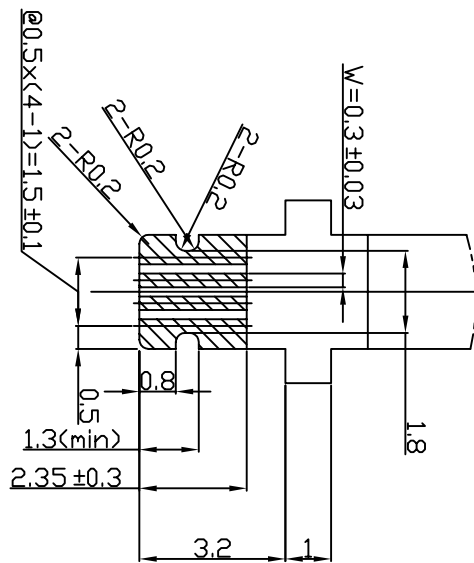
HDA430 / HDA430-H

Dimensional Drawing

4.3" ,480x272 ,TFT ,Transmissive Color, Landscape , White LED Backlight



Detail "B"
Scale: 8x



Detail "C"
Scale: 10x

HANTRONIX

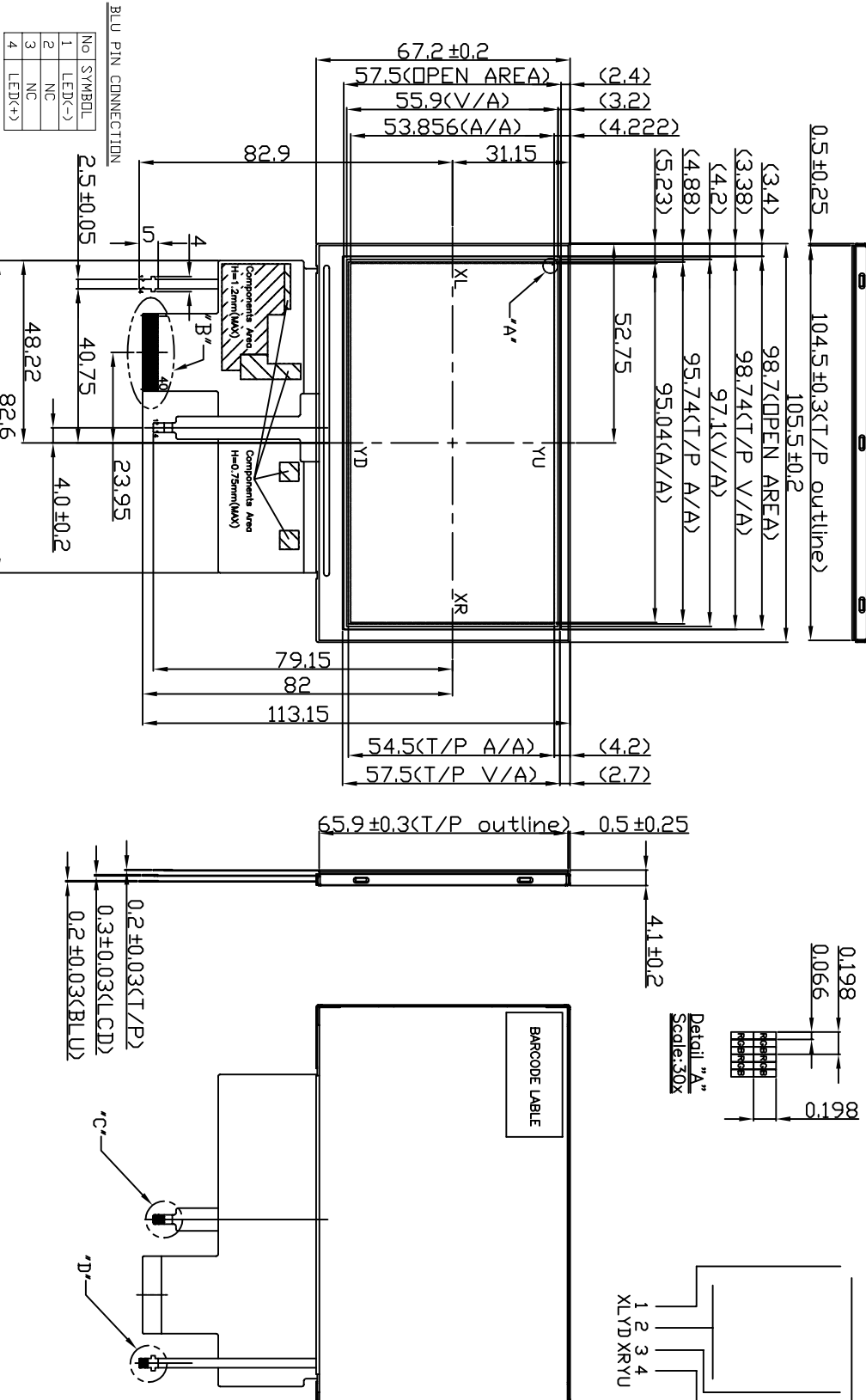
HDA430-T

Dimensional Drawing

4.3", 480x272, TFT, With Touch Screen, Landscape, White LED Backlight

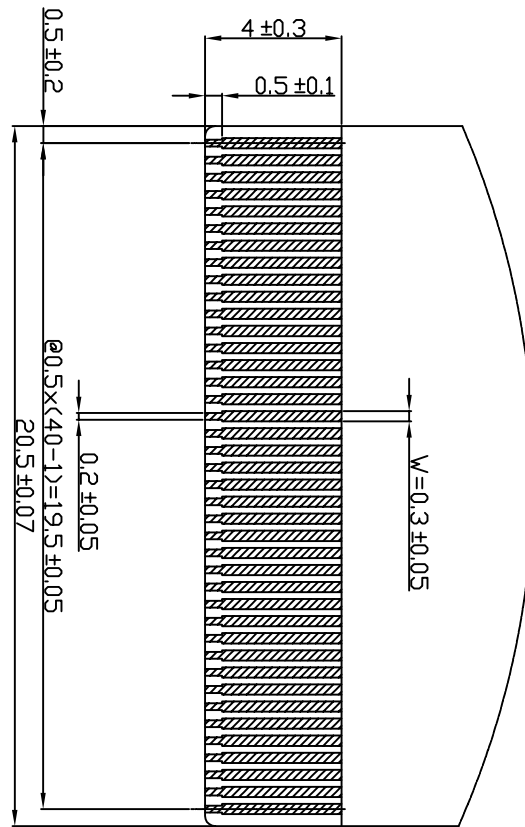
With TOUCH SCREEN

RECOMMENDED TOUCH SCREEN CONNECTOR : MOLEX 0472180417

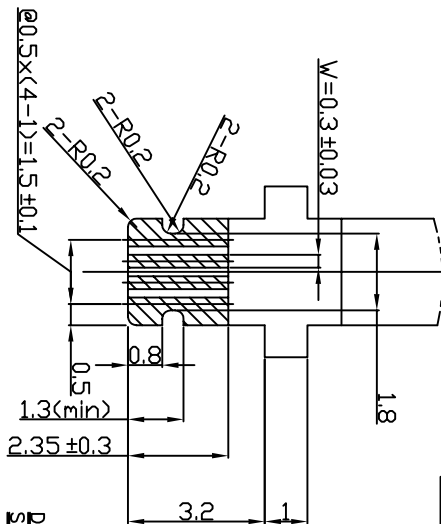


HANTRONIX

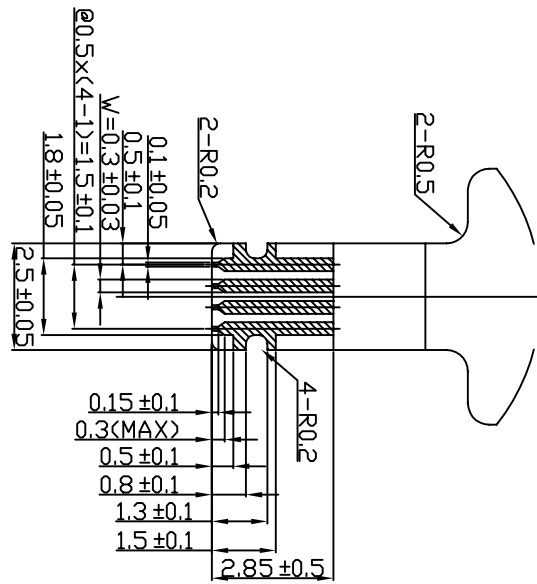
With TOUCH SCREEN



Detail "B"
Scale: 8x



Detail "C"
Scale: 10x



Detail "D"
Scale: 10x